

# EVACUATION PLAN

STUDENT RECREATION CENTER, FS414  
FLOOR 1



**CALL 911**

FIRE  
POLICE  
MEDICAL

IN CASE OF FIRE, PULL  
FIRE ALARM, USE EXIT  
STAIRS, CLOSE ALL  
WINDOWS AND DOORS,  
DO NOT USE ELEVATOR.



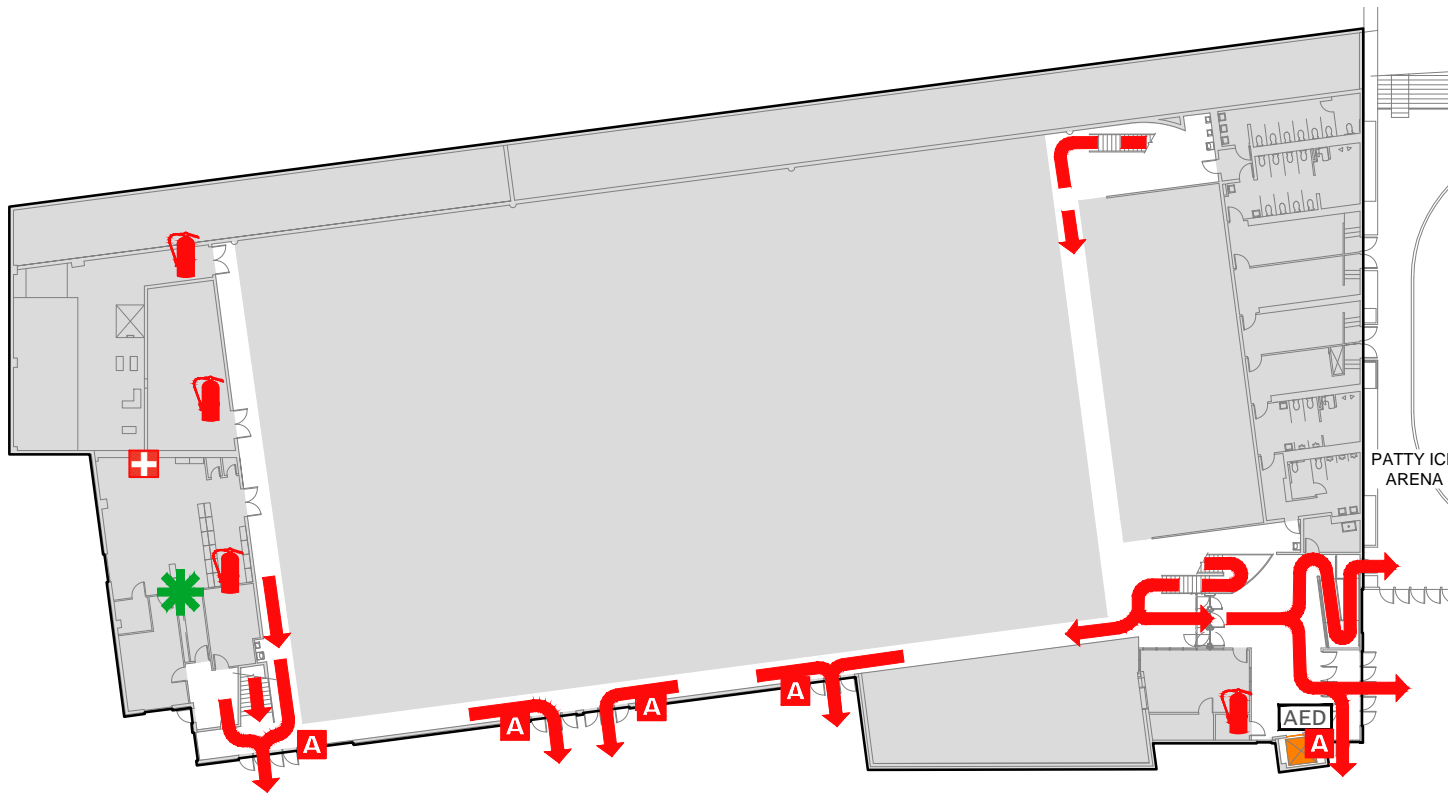
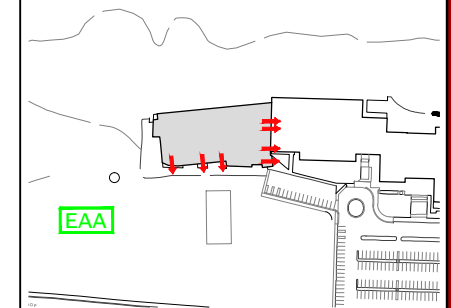
FIRE ALARM WILL SOUND AS  
CHIRPING ELECTRICAL HORN,  
STROBE LIGHT WILL FLASH.

**PERSONS  
WITH  
DISABILITIES**

CALL 911, REPORT  
YOUR LOCATION,  
PROCEED TO THE  
NEAREST EXIT OR EXIT  
STAIRWELL AND  
AWAIT ASSISTANCE.



**EVACUATION SITE**



## SYMBOL LEGEND

EMERGENCY EGRESS PATH

EMERGENCY ASSEMBLY AREA

ELEVATOR

FIRE EXTINGUISHER

STAIRS

FIRST AID

ALARM PULL STATION

AUTOMATED ELECTRONIC DEFIBRILLATOR

YOU ARE HERE

LAST REVISION: DECEMBER 2016

FOR REVISIONS OR COPIES CONTACT DDC DRAFTING AT UAF-DDC-CADD@ALASKA.EDU