

Toolik Field Station

Town Hall – February 6, 2026





We acknowledge the Alaska Native nations upon whose traditional lands our field station operates. In Fairbanks, our Logistic offices are located on the traditional lands of the Troth Yeddha' Dena people of the Lower Tanana River.

We acknowledge that Toolik Field Station and the surrounding areas are located on the ancestral hunting grounds of the Nunamiut, and occasional hunting grounds and routes of the Gwich'in, Koyukuk, and Iñupiaq peoples.

Toolik Field Station recognizes, and is grateful for, the Indigenous people who inhabit and steward the land.



Staff changes

Farewell

Laura Belval

Faye Ethridge

Scott Filippone

Randy Fulweber

Justin Johnson

Mike Reynolds

Matt Walker

Jorge Noguera Tapia

Welcome

Lindsey Clark, assistant manager

Brian Tamm, head chef

Trevor Layman, station supervisor

New GIS Manager



Happy retirement to Brian Barnes!



Welcome, new station supervisor Trevor Layman!



- 9 month position starting in late Feb.
- Masters from Scripps
- Background in education & civilian & Coast Guard operations in polar regions
- Formerly the
 - Crew-science liaison on Arctic icebreaker Healy
 - Search & Rescue supervisor in Juneau
 - Comms lead at McMurdo
- Enjoys running, yoga, video games, skiing, foreign languages, and learning!





What to expect in 2026

- Summer reservations due **March 1** on myToolik.alaska.edu
- TFS rate increase in 2026 to **\$135/night**
- Station logistics and transportation
 - **Arrival days to the station are Tuesday, Thursday, and Friday.** Other arrival days need to be coordinated with the station manager at uaf-iab-tfs-manager@alaska.edu
 - Thursday Prudhoe Bay taxi is on a case-by-case basis and must be coordinated in advance with the station managers.
- Staff Hours:
 - **8:30 a.m. - 5:30 p.m. Monday - Saturday.** Sundays are a day off for the staff.
 - Station Manager and on-duty EMT remain available to respond to community needs/emergencies on Sundays.
- Potential for a busy construction season in the Fall with excavation throughout the station





What to expect in 2026: Billing

- All rates & fees are listed on our [website](#).
 - Includes consumables like >10 lbs dry ice, SIPRE auger blades (\$250/set), liquid nitrogen
- Please review your project record & reservations to assure that your billing information is accurate.
 - TFS bills monthly. If you have specific billing timing, please email the [business office](#) (UAF-Toolik-Business@alaska.edu).
- Please set up your [fuel account](#) when you make reservations.
 - TFS staff fuel trucks, but you need to have an existing account to buy fuel for project vehicles or for long-distance use of pad trucks.
 - Allow 5 business days from the time of request to receive an active fuel code.
 - **Ensure you have a fuel code by the time you reach the station.**



Operations Reminders



- Vehicle fueling
 - Make plans in advance. If you have an early departure to the field and need refueling, please see the operations staff the night prior during business hours if at all possible.
 - If you know you need fuel before going out on Sunday, please see the operations staff Saturday night.
- Pad trucks are available on a first come, first serve basis.
 - Pad trucks may not be reserved in advance of a project's arrival to the station.
 - The truck fleet is aging; Expect limited availability for pad trucks.
 - You must cover fuel for trips to field sites that go beyond Fog Lakes or Atigun Gorge.
 - If pad trucks are your main mode of transportation even for short trips, please consider paying for fuel.
 - **Range is limited to between Atigun Pass and Sagwon.**





Transportation to/from Fairbanks

- Northbound TFS shuttles – Tues, Thurs & Fri (peak season)
- Southbound TFS shuttles – Tues, Thurs & Sat (peak season)
 - Some additional shuttles on non-standard dates.
- The Dalton Highway Express runs north on Tues, south on Sun & Wed.
 - Toolik passengers have a discounted rate of \$200.





Authorized Driver Updates

- Property transfer of 14 Toolik vehicles from Battelle to UAF/Toolik is ongoing.
- We'll collect both UAF & Battelle driver forms until the transfer is complete.
 - Being a driver is optional.
 - Non-UA-affiliated drivers can be authorized to drive Battelle vehicles, UAF vehicles, or both.
 - UA-affiliated drivers can be authorized to drive UAF vehicles or both.
- **Complete forms at least a month in advance of your arrival date.**





Authorized Driver Regulations

UAF Regulations

- Have a minimum of 3 years licensed driving experience.
- Be in compliance with licensing and insurance requirements.
- Have not been convicted within the last 3 years for:
 - Two or more moving violations OR two or more at fault accidents.
 - Driving under the influence of alcohol or drugs.
 - A pattern of moving violations or reckless driving behavior (accumulation of >5 points against their drivers' license).

Battelle Regulations

- Must be at least 25 years old.
- Have no driving license revocations, restrictions, or suspensions within last 5 years.
- Have a current and valid driver's license.



Authorized Driver Backups



UAF Backups

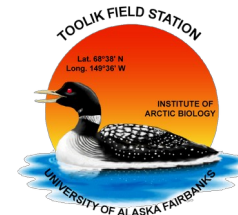
- A photograph/copy of the front and back of your driver's license.
- Proof of completion with a 100% score of the UAF Driver's Safety Training.
- Driving records from all states you have been licensed in the last three years.
- **For Non-UA-affiliated drivers:** UAF requires a current certificate of insurance from your home institution.

Battelle Backups

- A photograph/copy of the front and back of your driver's license.



Southbound Shipping and HAZ



- Simplified SRS labels for southbound sample hold and shipments
- ALL southbound hazardous shipments must be accompanied by the Hazmat Shipping Transfer Form.
 - This includes shipments that contain batteries.
 - Ensure your safety office understands that HAZ shipments from AK may have more restrictions than within the continental US.
- Both the forms & the SRS labels can be found in shipping & receiving, the computer lab & the dining hall.

Southbound Sample **HOLD**

SRS #: _____ Package # _____ of _____

Temperature requirement:

☐ DNF ☐ None ☐ 4°C ☐ -20°C ☐ -80°C

We can store samples at their appropriate temperature in Fairbanks.

Hazmat?: Yes or No if yes, UN # _____

Required Actions:

- ☐ Notify FOA/OPS staff of this shipment
- ☐ Affix special labels if needed (HAZ, fragile, etc.)

Southbound Sample **SHIPMENT**

SRS #: _____ Package # _____ of _____

Temperature requirement:

☐ DNF ☐ None ☐ 4°C ☐ -20°C ☐ -80°C

We suggest shipping temperature sensitive samples on Monday/Tuesday.
We can store samples at their appropriate temperature in Fairbanks.

Hazmat?: Yes or No if yes, UN # _____

Required Actions:

- ☐ Notify FOA/OPS staff of this shipment
- ☐ Affix special labels if needed (HAZ, fragile, etc.)
- ☐ Completely remove/cover old shipping labels and barcodes

HAZ Shipping



If you complete the Hazmat Shipping Transfer Form...

- TFS **can** assist with:
 - Loading your package into our vehicles
 - Transporting your package from TFS to Fairbanks in our vehicles
 - Drop off of package with shipping carrier (FedEx, UPS, USPS, etc.)
- TFS **cannot** assist with:
 - Packaging your materials
 - Marking or labeling your materials
 - Preparation of shipping papers and documentation
 - Inspecting packages for regulatory compliance





What to expect in 2026: Safety

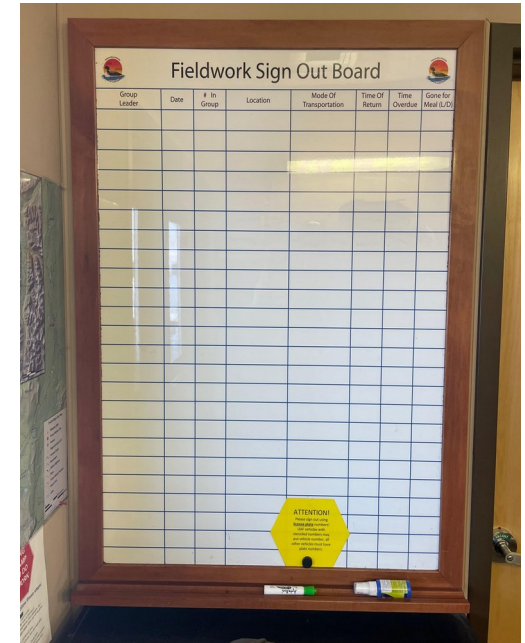
- EMT on-site from May through September
- EMTs can no longer obtain prescription medication through physician sponsor.
 - Advise your team members to work with their physician to obtain standby medications.
 - **Highly advise discussing standby antibiotics with your physician** for UTIs, respiratory tract infections, skin infections, or travelers' diarrhea.
 - Other recommended OTC medications: pain & fever relievers, allergy medications, upset stomach or diarrhea medications
- Practice personal responsibility to minimize spread of communicable illnesses
 - Isolate or mask if you're feeling sick.
- Lab safety
 - Remember your lab shoes! Closed toed shoes are required in all labs.
- Safety questions? Email uaf-toolik-safety@alaska.edu



Sign-Out Board & Search and Rescue



- Reminder: the sign-out board is there for our collective safety.
 - You must sign out & in everytime you leave the station pad.
 - Be sure to erase your name after you have returned
 - If you suspect that you will be overdue, use your inReach/satphone to notify the EMT & Station Manager.
- TFS staff will only drive out to check your last known field location if it is between Ice Cut and Atigun Pass.
 - If we can't find you, we'll contact the State Troopers.
- The EMT no longer actively monitors the sign-out board after 10 p.m.
 - If your overdue time is past 10 p.m., please have a team member be your on-site point-of-contact.



Spatial & Environmental Data Center



- New autonomous instrumentation fee - **\$200/month/project**
- Science Support - **\$16.88/hour**
 - Remote access/field assistance - 16 free hours per project per year*
 - GIS & remote sensing support (data collection & processing) - 16 free hours per project per year*
 - *only if projects spend at least 5 user days at Toolik.
- New year-round EDC office & work space in old shower module.
- SEDC offers remote access & field assistance, common-use equipment, baseline measurements, drone & GPS surveys, site selection & mapping.
 - Remote access support includes anything from helping set up projects, scouting out new sites, sampling when you are not at the station, filtering in the lab and so much more
- Please get your support requests in as soon as possible through [myToolik](#).



Toolik GIS & RS



- Drones and sensors replaced in accordance with the National Defense Authorization Act (NDAA).
 - We are on track to provide the same level of drone services as in past years.
 - RGB, multispectral (Micasense RedEdge-P) and PPK system
 - Flying a [VisionAerial SwitchBlade - Elite](#) drone - can only fly one sensor at a time.
 - We cannot fly your sensors if they do not comply with the NDAA.
- All spatial data products collected by TFS will be archived with the Arctic Data Center in accordance with NSF guidelines.
- Please get your support requests in as soon as possible through [myToolik](#).
 - Direct any questions to GIS & RS uaf-iab-tfs-gis@alaska.edu.



Field Courses



- New Field Course Support fee - **\$70/person/night**
 - In addition to user day fee
 - Covers station tours, pre-course planning, other misc. support, and on-site coordinator to help reduce impact to station
- Removed date limitations for courses
- Currently 8 courses for June - Aug. 2026
 - 4 [Summer Sessions](#), including A Natural History of Arctic Alaska led by Brian
 - 2 Upward Bound, new UAF & returning one from OSU
 - UAF Climate Scholars, Soil Geography



Photo by Erin Towns



Opportunities for Broader Impacts



- Share your research with **field courses**
- **Toolik Visitor's Day** - Saturday, June 6
- **Artist-in-residence**
- Share a glimpse of what it's like to live and work at Toolik with an [Instagram takeover](#)
- Arctic Interagency **Visitor Center programming**
 - Email hdunleavy@alaska.edu for more info on the above opps.
- Collaborate with LTER & Polar STEAM **educators** at Toolik
 - LTER, Amanda Morrison, arcticlter.education@gmail.com
- EvoME [science reporting](#) fellowship - June 14-28
 - 6 journalists with Chris Neill, cneill@woodwellclimate.org
- **Toolik Talking Shop** - Wednesdays
 - Ugrad presentations in late July. Email ayoung55@alaska.edu to sign-up.

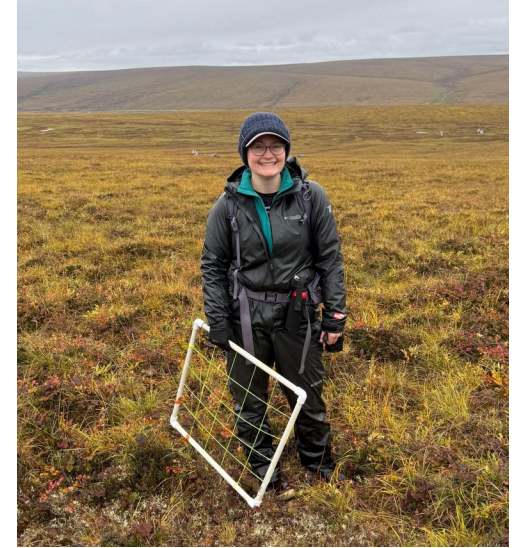


Elise Imbeau, 2025 Artist-in-Residence



Tundra Award

- Provides students & early career researchers with up to 10 days to conduct an independent research project at TFS
- Continuing in 2026
 - Applications due Feb. 15
 - Awardees will be announced in late March.
- Since 2022, we've supported 16 students & ECRs with Tundra Awards. Almost half have returned to continue Toolik research.



2025 Tundra Awardee on their way to fieldwork

UA Giving Day is March 24-26.
Help us unlock the Steering Committee's \$1,250 challenge!

Patrick Proden
Alaska Operations Manager, Battelle ARO
patrick.p@polarfield.com

2026 Helo Operations Toolik Field Station

Toolik Town Hall, February 6, 2026



Toolik Helicopter Operations, 2026



- One helicopter (**R66**) is contracted for helo operations in 2026, supported by Alpine Air
- Two deployment dates
June 29 – July 13
August 5-18
- ***First flights, June 29. Last flights, August 18***
- Helicopter and Coordinator will depart Toolik between deployments
- Currently, **67.5 hours** of helicopter flight time spread across 3 teams with 20 of these hours committed to demobilization of boardwalk with a 4th team
- Anticipate the return of and equal level of professional service from the helicopter vendor experienced in 2025

Toolik Helicopter Operations, 2026, cont'd

- Continued focus on *safety across operations and the professional conduct of aircraft team. Building additional support across operations from a 2024 safety audit in collaboration with Battelle ARO, Alpine Air and BASC*
- Committed to a *clear channel of communication* from researchers to Battelle ARO

-Implemented a 3-question survey to gather feedback, including a 'Contact Me' option for follow-up. Will utilize same tool in 2026

- Updated helicopter calendar for direct schedule requests made by researchers. **Deadline, March 20.**
- Reviewing any calendar conflicts and Close Support (CS) requests carefully to maximize helo resources. Ask team members to be mindful of constraints that are in place for this field season and the need to manage the shared use of the resource collaboratively (working with Battelle-ARO, helicopter vendor and TFS staff to optimize the schedule across all teams)



Feedback, Questions, or Concerns?

- The Battelle ARO Team welcomes feedback on our support to science at any time and is committed to providing the best possible support to science at Toolik Field Station
- Please do not hesitate to reach out to with questions or concerns



2/6/2026

Arctic Research Support & Logistics Services (ARSLS)

Toolik Town Hall – FEMC Overview



- Preventative Maintenance
- Corrective Maintenance and Minor Projects
- Facility Projects and Science Support
- Engineering Support



Battelle ARO FEMC Preventative Maintenance Support

- Annual Inspections
 - Plumbing
 - Electrical
 - General
 - Building Settlement Monitoring



Battelle ARO FEMC Corrective Maintenance and Minor Projects

- Toolik Community Center Walk-in Refrigerator/Freezer Controls
- Winter Quarters Roof Repairs
- Generator 4 Upgrades
- Cottongrass Bathroom Flooring
- Generator Modules Painting
- D-Shack A and B Flooring
- Lab Supply Storage Connex Light
- Cold Storage Repairs
- Washateria Repairs
- Fuel Stand Pipe
- Miscellaneous repairs to Labs 1, 2, 3, 4, 6, 7
- Winter Quarters and Dining Facility GFCI repairs



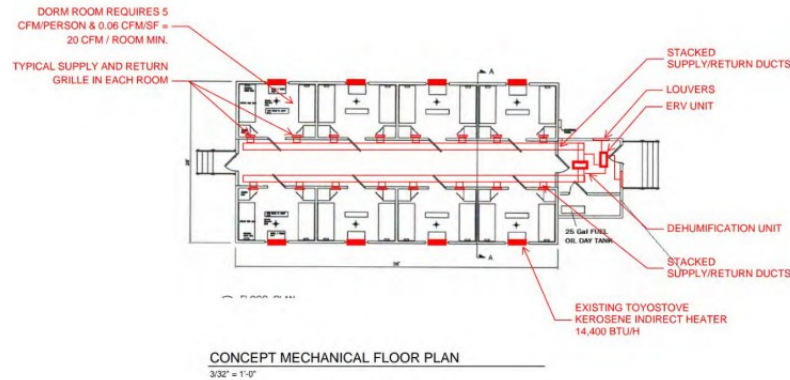
Battelle ARO FEMC Facility Projects and Science Support

- Central Waste Line Repairs
- Fiber Loop Expansion
- Road Crossing – Replace Utilidor
- Environmental Data Center Demolition
- Environmental Data Center Upgrades
- Dry Lab Window Replacement
- Winter Lab Window Replacement
- Winter Quarters Window Replacement
- Isotope Lab Trailer Demolition
- Deegan 2320675: Boardwalk Installation
- Griffin 2224743: Boardwalk and Vole Fence Maintenance
- Moody 2109946: Boardwalk Demobilization
- Rocha 21035539: Boardwalk Demobilization



Battelle ARO FEMC Engineering Support

- Musk Ox HRV Design
- Winter Quarters and Cottongrass Tank Consolidation





BATTELLE

Arctic Research Operations

800.201.2011 | solutions@battelle.org |
www.battelle.org



Looking forward to another great field season!

For more information on station operations,
visit our [website](#) and review our [orientation slides](#).

Questions?