



PSECCO

Polar Science Early
Career Community Office

An Overview of the Polar Science Early Career Community Office and Polar Early Career Needs

Mariama C. Dryák-Vallies, Anne U. Gold, Bradley Markle

University of Colorado Boulder



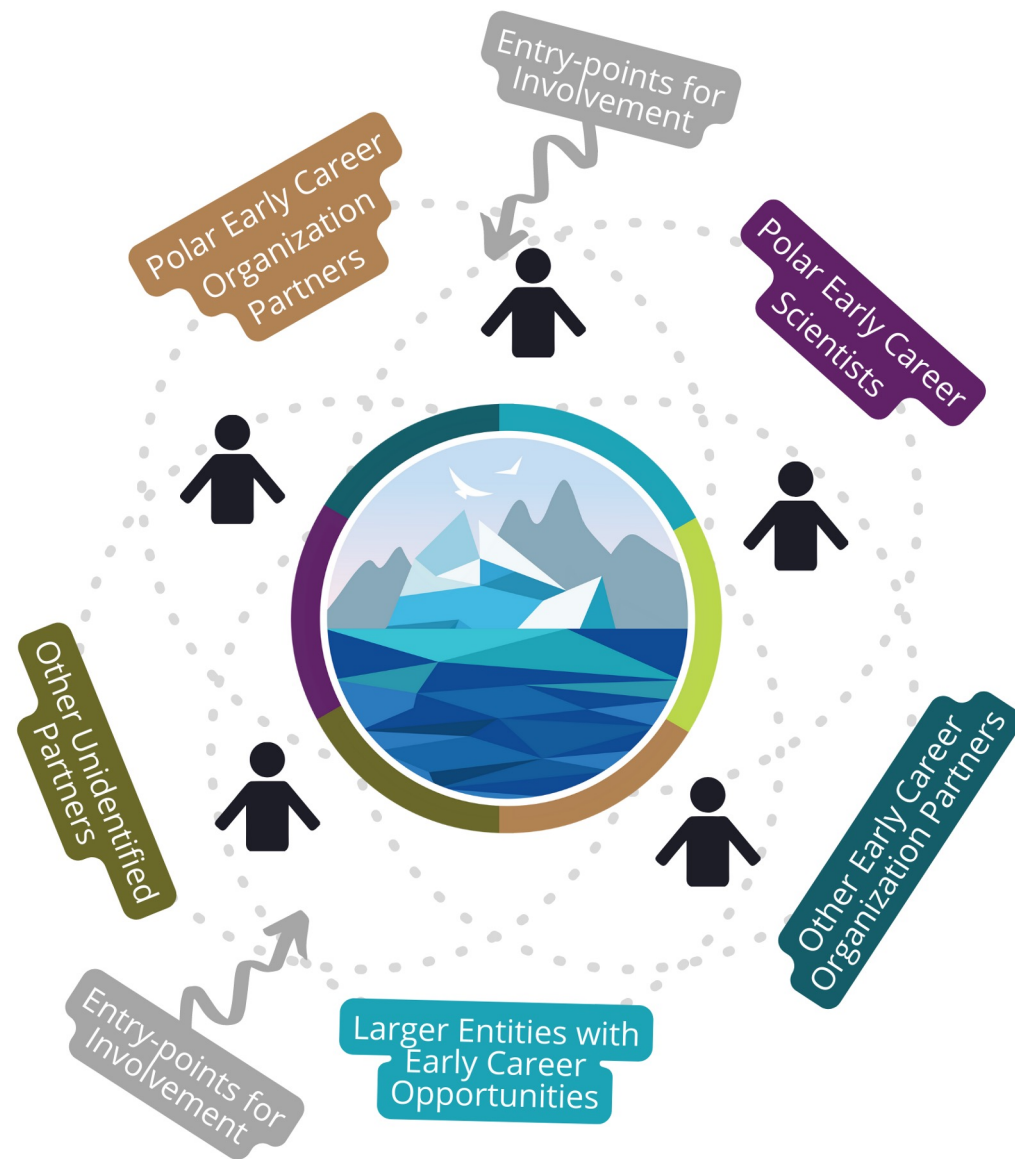
University of Colorado
Boulder



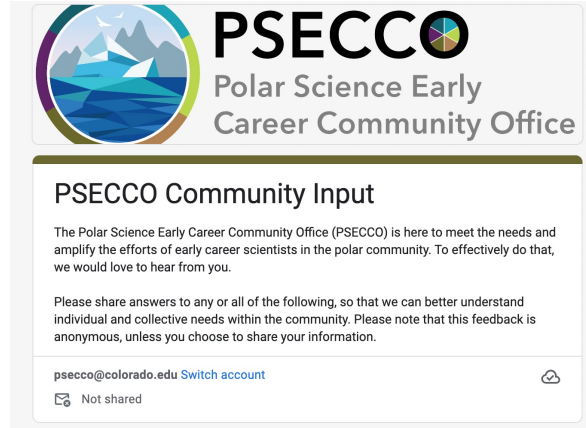
Our Mission

- **empower and elevate polar early career scientists**
- **support a vibrant community**
- **provide opportunities and resources**
- **offer skill trainings**
- **work together towards a more just, inclusive, diverse, equitable and accessible polar science environment.**

Learn more at
www.psecco.org



Over the past two years we've been listening to polar ECRs in different places



- 2 PSECCO Community Meetings
 - Online, ~200 people
- 5 ECR Workshops at Conferences
 - In-person, ~200 people
- Online form entries - 7 people
- One-on-one conversations - numerous



Themes from listening sessions



Access to
resources &
trainings



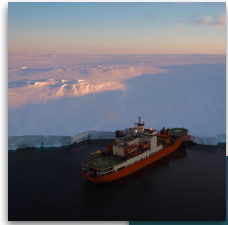
Welcoming
communities
& culture



Connection-
building



Needs and challenges for polar ECRs



Access to resources & trainings

- Practical applications of polar research
- Careers outside of academia
- Co-production of knowledge



Welcoming communities & culture

- Action on issues of DEI
- Supportive and safe spaces for all
- Work-life balance
- Family-friendly policies



Connection- building

- Collaborations & networking
- Mentorship
- Understanding of polar research support organizations



Needs and challenges for polar ECRs



Access to resources & trainings

- Practical applications of polar research
- Careers outside of academia
- Co-production of knowledge



Welcoming communities & culture

- Action on issues of DEI
- Supportive and safe spaces for all
- Work-life balance
- Family-friendly policies



Connection- building

- Collaborations & networking
- Mentorship
- Understanding of polar research support organizations



Needs and challenges for polar ECRs



Access to resources & trainings

- Practical applications of polar research
- Careers outside of academia
- Co-production of knowledge



Welcoming communities & culture

- Action on issues of DEI
- Supportive and safe spaces for all
- Work-life balance
- Family-friendly policies

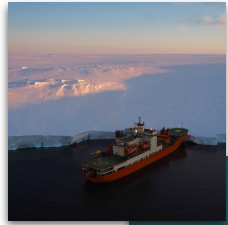


Connection- building

- Collaborations & networking
- Mentorship
- Understanding of polar research support organizations



Needs and challenges for polar ECRs



Access to resources & trainings

- Practical applications of polar research
- Careers outside of academia
- Co-production of knowledge



Welcoming communities & culture

- Action on issues of DEI
- Supportive and safe spaces for all
- Work-life balance
- Family-friendly policies



Connection- building

- Collaborations & networking
- Mentorship
- Understanding of polar research support organizations



PSECCO
Polar Science Early
Career Community Office

What can PSECCO offer polar ECRs?

Professional Development

- ✓ Workshops
- ✓ BAJEDI
training
- ✓ Webinar series



PSECCO
Polar Science Early
Career Community Office

What can PSECCO offer polar ECRs?

Professional Development

- ✓ Workshops
- ✓ BAJEDI training
- ✓ Webinar series

Community

- ✓ Community-building
- ✓ Access
- ✓ Networking

What can PSECCO offer polar ECRs?

Professional Development

- ✓ Workshops
- ✓ BAJEDI training
- ✓ Webinar series

Community

- ✓ Community-building
- ✓ Access
- ✓ Networking

Funding

- ✓ Travel grants
- ✓ BAJEDI micro-grants
- ✓ Admin grants

What o

Toolik Community Gear Closet



PSECCO

Science Early
er Community Office

Profes Develo

- ✓ Works
- ✓ BAJED
- trainin
- ✓ Webin



ding

grants
OI micro-
s
n grants



PSECCO

Per Science Early
Per Community Office

What c

Toolik Community Gear Closet

**Profes
Develo**

- ✓ Works
- ✓ BAJED
trainin
- ✓ Webin



ding

grants
OI micro-
s
n grants

What can PSECCO offer polar ECRs?

Professional Development

- ✓ Workshops
- ✓ BAJEDI training
- ✓ Webinar series

Community

- ✓ Community-building
- ✓ Access
- ✓ Networking

Funding

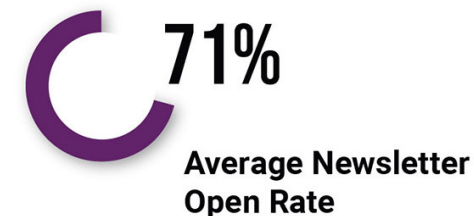
- ✓ Travel grants
- ✓ BAJEDI micro-grants
- ✓ Admin grants

PSECCO by the numbers from April 2022 to November 2024

EVENT ENGAGEMENT



ONLINE ENGAGEMENT



SOCIAL MEDIA





PSECCO
Polar Science Early
Career Community Office

Write PSECCO into your grants!



PSECCO
Polar Science Early
Career Community Office

SPONSORSHIP MENU

Support the next generation of polar researchers by partnering with PSECCO.



CONFERENCE TRAVEL GRANT

Help PSECCO support more polar early career researchers (ECRs) in getting to conferences. Sponsor an ECR conference travel grant.

Est. sponsor contribution: \$1000



BAJEDI MICRO-GRANT

Help PSECCO fund an additional micro-grant for ECR work focused on belonging, accessibility, justice, equity, diversity and inclusion (BAJEDI) in polar science spaces.

Est. sponsor contribution: \$1000



BAJEDI WORKSHOP

Sponsor a workshop for furthering belonging, accessibility, justice, equity, diversity and inclusion (BAJEDI) in the polar sciences made for polar ECRs by non-profit training experts, THRIVE Lifeline.

Est. sponsor contribution: \$3500



POLAR POSTDOC LEADERSHIP WORKSHOP

Help PSECCO organize a second Polar Postdoc Leadership Workshop to activate leadership skills of the next generation of polar research leaders.

Est. sponsor contribution: \$\$\$ - available upon request



DECOLONIZING ARCTIC RESEARCH WORKSHOP

Support PSECCO in organizing a 'Decolonizing Arctic Research' workshop for ECRs put on by the First Alaskans Institute.

Est. sponsor contribution: \$8500 - \$13500

Email psecco@colorado.edu for more information.

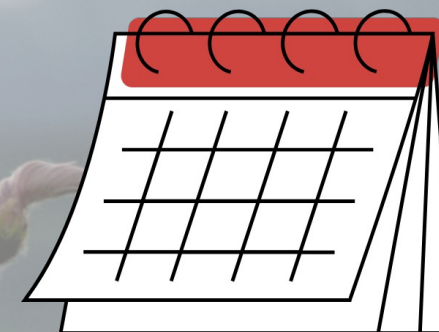
Connect with us via:

- Our website: www.psecco.org
- Email: psecco@colorado.edu
- Our newsletter:
<https://psecco.org/join-psecco-community>
- BlueSky & X: @polarsecco

Connect with us via:

- Our website: www.psecco.org
- Email: psecco@colorado.edu
- Our newsletter:
<https://psecco.org/join-psecco-community>
- BlueSky & X: @polarsecco

*Stay
Tuned*



- Polar Early Career World Summit
- Field safety and prep-related events
- NSF proposal writing workshop
- Climate mental health



PSECCO

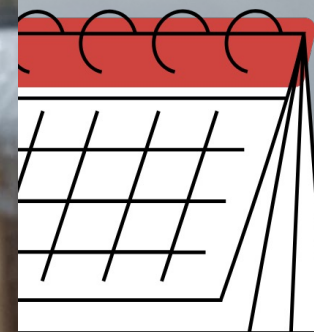
Polar Science Early
Career Community Office

Connect with

- Our website: www.psecco.org
- Email: psecco@colorado.edu
- Our newsletter:
<https://psecco.org/newsletter>
- BlueSky & X: @psecco



Stay
Tuned



by Career World Summit
and prep-related events
positional writing workshop

- Climate mental health



University of Colorado
Boulder

