

1/29/2026

# Arctic Research Support & Logistics Services (ARSLS)

Toolik Field Station APP26 Battelle ARO FEMC Projects





# APP26 Toolik Field Station: FEMC Schedule and Projects

- FEMC Site Superintendent is Travis Moose
- Spring Season: Crew of 8, April 16 – June 5
- Fall Season: Crew of 8, August 1 – September 17

## Performing

- Annual Inspections
- Corrective Maintenance
- Facility Projects
- Science Support



# Utilities Road Crossing

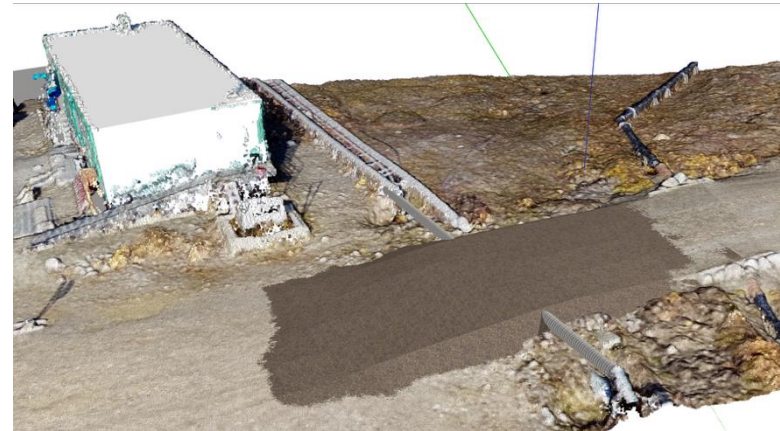
- Install Temp Water Service
- Disconnect Fiber Optic
- Excavate old culvert and lift new culvert to level height
- Hook back up utilities and bring road to new grade



Water line north side of road dipping behind Wet Lab.

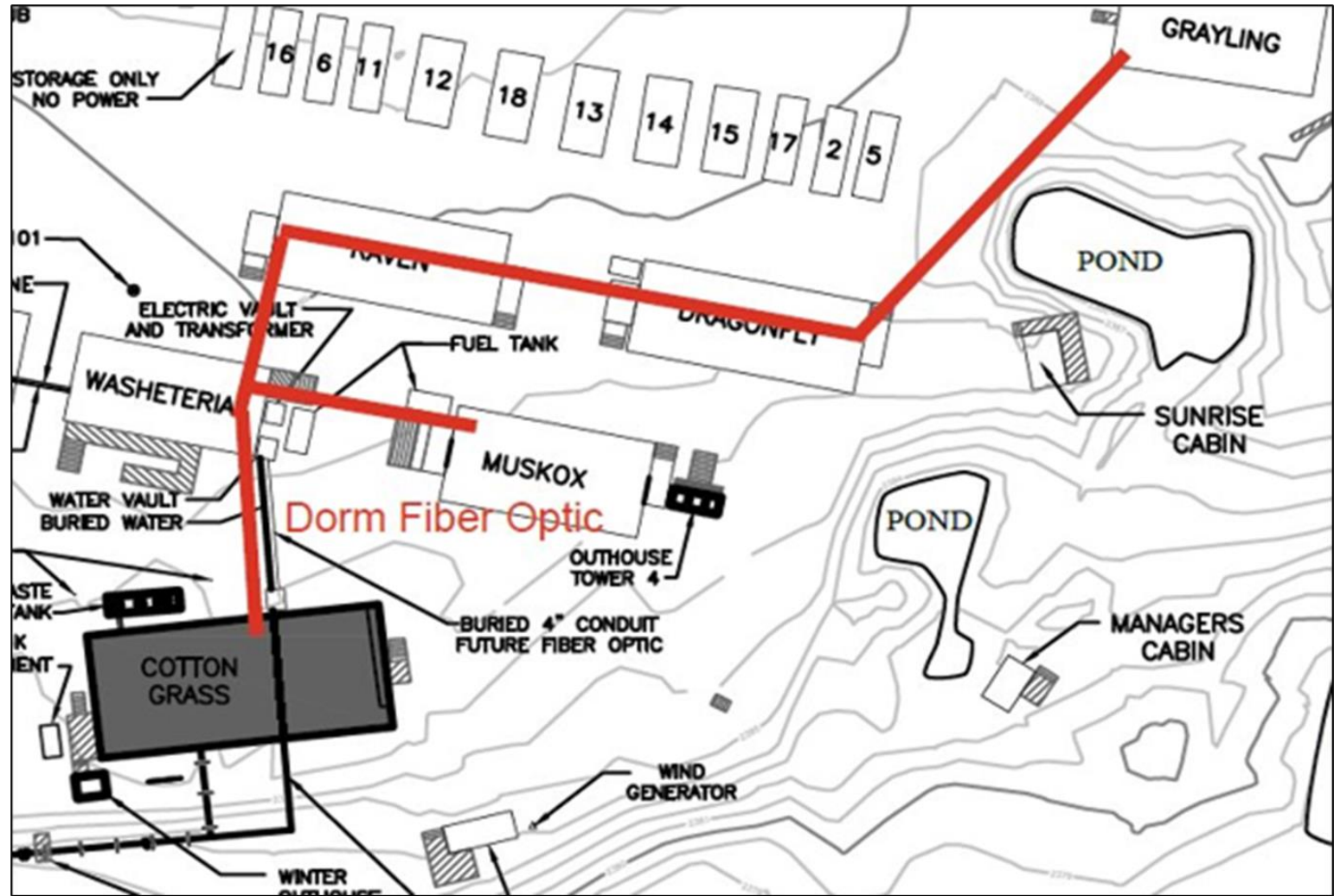


Water line south side of road dipping behind new EDC.



# Toolik Utilities: Fiber Loop Expansion

- Challenging excavation conditions
- Coordination with Toolik staff and residents
- Install Fiber conduit in Dorms, under dorms and in trenches.
- Back fill & compaction



Proposed fiber loop dormitory route.



# Central Waste Line: Correct Slope to Waste Tank

- In APP25 low points in the waste line were noted from the Dining Facility to the Central Waste Tank.
- FEMC crew will excavate and expose the waste line and reset to get and maintain proper slope for effective drainage.
- Impact to Toolik Station: Traffic flow, Waste Tank evacuation, and pedestrian traffic flow to Dining Facility.



Highlighted Area shows Dining Facility waste line location that will be excavated and releveled for proper slope to the Central

# Window Replacements

- Dry Lab
- Winter Lab
- Winter Quarters



Dry lab west side windows to be replaced.



Windows to be replaced on north side of Winter Quarters.



Winter Lab window with broken seal.



# Other APP26 Efforts:

New Toolik Dock Procurement

New EDC Upgrades and Code Compliance

Removal of old EDC and Isotope lab trailer

## Science Support:

Moody - boardwalk removal

Rocha - boardwalk removal

LTER – vole fence removal at 3 sites

Deegan – boardwalk install for EvoME



Old furnace to be replaced



Photos show vole exclosures from Nome Project - representative of vole fences to be maintained and/or removed for the Griffen LTER project.



Isotope Lab trailer to be removed from Toolik Field Station.



# APP27 Toolik Projects

## Planning for Science Support and Projects

- APP27 Projects – begin thinking and planning now
- Work with Science PM's early
- Review projects during Toolik Annual Meeting
  - Develop better project scope
  - Find cost saving and efficiencies
  - Address current concerns
  - Long Range Plan
  - Working together to make Toolik a great place to do Science





***BATTELLE***  
Arctic Research Operations

800.201.2011 | [solutions@battelle.org](mailto:solutions@battelle.org) | [www.battelle.org](http://www.battelle.org)