

# DIGITAL UPDATE

OCT 1, 2020 - SEPT 30, 2021 REPORT  
TFS WEBSITE AND MYTOOLIK SYSTEM UPDATE

AMANDA B. YOUNG



# UPDATES

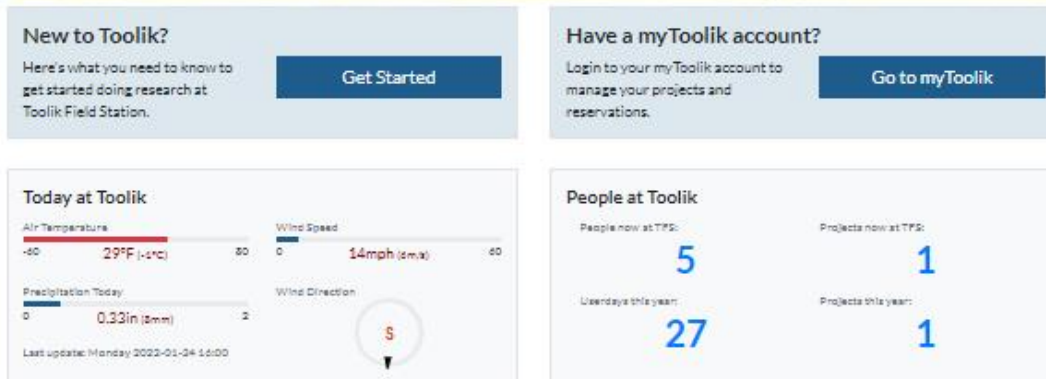
- Screenshot tour of the new Website
  - Highlighting new features
  - Viewership Summary
  - [Video tour of new website](#)
- Updates to myToolik System
  - Request System
  - [Video tour of myToolik](#)
- Toolik Web Developer – Ed Debevec retired.
  - Searching for new Web Developer

# TOOLIK WEBSITE – LAUNCHED MARCH 2021



Direct access to the Naturalist Journal from the bottom of the homepage

Current Weather



Number of projects and people in camp

# EFFORT MADE TO MAKE WEBSITE FRIENDLY TO NEW USERS



TFS / Handbook / Camp Life

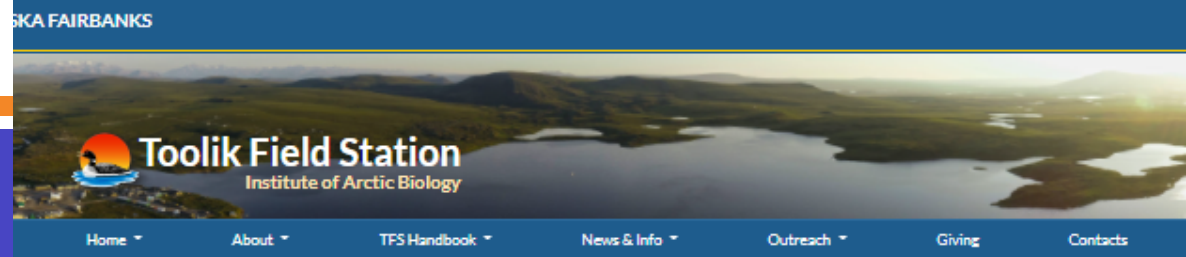
## Camp Life

Everything you need to know to prepare your visit at the Toolik Field Station.

Please make sure to carefully read the different sections of this page, as it provides valuable information to help you prepare for your stay.



- Getting to Toolik Field Station
- Camp Operations
- Field Clothing
- Recommended Personal Gear
- Food
- Communication
- Bathing and Laundry



TFS / Handbook / Getting Started

## Getting Started at Toolik Field Station

If it is your first time here or you're a Toolik Field Station Veteran you'll need to make sure all is in order before your trip up to Toolik! You will find useful links down below to pertinent information about what you will need for your visit. If you are unsure about what you might need, please use our flow chart to help guide you to where you need to be.

### myToolik

Logging in to your myToolik account will often be the first step for anything related to conducting research at Toolik Field Station.

- Manage your projects and invoices
- Make housing reservations for your time at Toolik Field Station
- Reserve transportation to and from Toolik Field Station
- Reserve equipment and lab space
- Complete required training

And more!...

### Permits

Before you start your research at the Toolik Field Station you'll need to make sure you have your permits in order.

### Policies

To ensure the safety and well-being of individuals at Toolik Field Station as well as operating under the guidelines of the National Science Foundation and other entities, please review and follow Toolik's policies.

### Camp Life

Preparing your luggage for your stay at Toolik can be tricky. Here are some tips on what to bring and what to expect during your stay. There are plenty of weekly events and activities happening in camp, so make sure to check out the community board in the dining hall or the online [event calendar](#)!

### Title IX at Toolik

During your stay at Toolik Field Station you are expected to follow the law, as well as specific guidelines laid out in Toolik Field Station policies and the Code of Conduct. Residents and employees are expected to conduct themselves in a manner that does not infringe upon the rights of others. Violations will result in serious sanctions.

### Support

Research support through remote access, field assistance, drone surveys, instrument repair or fabrication are available at Toolik Field Station. Learn more about the support services available at Toolik Field Station from the [Environmental Data Center](#), [GIS & Remote Sensing](#), and [Station Facilities & Operations](#).

### Battelle ARO

Some NSF funded projects are supported through Battelle ARO. Some of the support they provide is large scale construction projects and helicopter

### Start Here

I am a...

- New user
- Returning user
- Curious web surfer

### Project Funding

Is your project funded via Battelle-ARO and NSF?

- Yes
- No

### Get started with a myToolik account

- Go to [myToolik](#) to create your account.
- Learn about Toolik through our [facilities](#) and [policies](#) pages.
- We support your research through many services. Find out [what we offer](#).

Continue

### Permits

Do you need to get permits for your project?

- Yes
- No

### Get any required permits

- Identify research sites with [ToolikGIS](#).
- Apply for permits with appropriate landowners. See our [permits](#) page for more information.

Get it! What's next?



# SUBPAGES

ALASKA FAIRBANKS



## TFS Environmental Data Center

### Guides to the animals and plants of Toolik



Check out our EDC guides to the animals and plants of Toolik! Guides to the mammals and birds represent all of the species that have been seen in and around Toolik by our Naturalist. In addition to learning about the species you can also see when they are typically spotted and the calls of the birds. The Fish Guide shows examples of fish that are found in Toolik lake as well as nearby streams and rivers. The plant guide is an interactive key to identify species by their common features when you are slogging through the tundra. The virtual herbarium has at least one voucher per species and is extremely useful in getting a better sense of each species. We will be continuing to update and add to all of our guides as new species are spotted in the Toolik area. Let us know if you have found something that we do not currently list!

[Bird Guide](#) [Mammal Guide](#) [Fish Guide](#) [Plant Guide](#) [Virtual Herbarium](#)

### News & Announcements

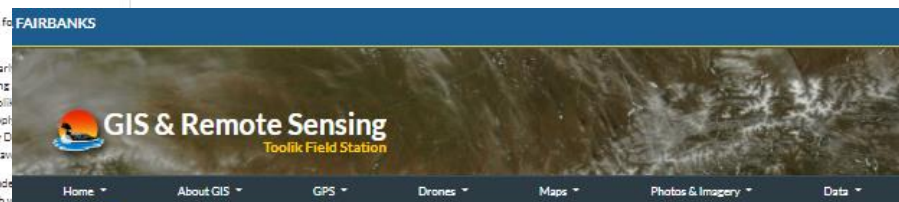
Application now open for TUNDRA award

Are you a student or early career researcher interested in conducting research project at Toolik? Funds for userdays? Apply! Userdays for Naturally Diverse Abilities, or TUNDRA, are available for students and early career researchers.

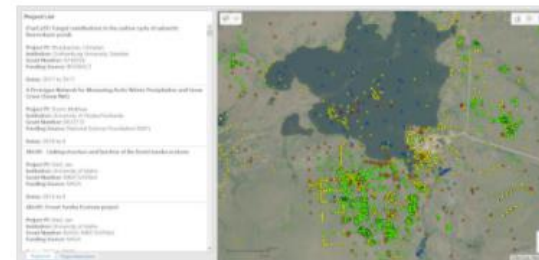
This award sponsors independent original Arctic research by Toolik. Toolik will provide with housing, meals, access science support, and travel Fairbanks and the field site.

The TUNDRA award is open to students and those that have a degree program within at any university. We end from all disciplines to apply due February 15, 2022.

For more information, visit the [TUNDRA award](#) [uaf-toolik-communication](#)



## TFS GIS & Remote Sensing



### Research Plots Dashboard

Check out our new spatial myToolik dashboard! It's got some really cool stuff- you can review current and historic Toolik research project information, explore where data were collected over the years, and discover what was learned. By clicking on individual points, we provide a popup window with hyperlinks to associated Principal Investigator(s) and project publications, and even links to project data (when available). Along the top of the dashboard we provide fields you can use to filter the points in the map. A one-stop shop for Toolik Field Station research! We continue to update this service, so be sure to check back regularly. Click on the screenshot above to open the dashboard.

[For all our online resources](#)

ALASKA FAIRBANKS



## Operations, Maintenance & Safety

The Station Facilities & Maintenance Department is in place to ensure smooth and safe operations of camp and its facilities. It is comprised of 3 Departments working hand in hand to provide quality support to our residents while preserving the facilities and assets in camp:

- Operations Department
- Maintenance, Equipment Support & Fabrication Department
- Safety Department

Read more below about what each department does and how we can help!



### Operations

A variety of services are supported by the Operations Department:

- Daily camp activities and request support: refueling, dry ice fabrication, freight management and handling, storage management
- Facilities upkeep and cleaning
- Housing assignment
- Admin support: report problems with MyToolik, IT, etc.
- Management of common-use vehicles &



### Maintenance, Equipment Support & Fabrication (MEF)

The MEF Department provides a wide array of services, from repairing a broken vehicle, to helping design, troubleshoot or fix a piece of equipment needed for your fieldwork, while performing routine maintenance tasks and repairs on the entire facility.

[MEF](#)



### Safety & Emergency Medical Support

The Safety Department at TPS is responsible for safety in camp for all residents, as well as emergency medical support. We are growing this department to develop a variety of useful field and medical trainings in collaboration with the UAF Environmental Health, Safety, and Risk Management Department, the NSF and Battelle-ARL. The Department also provides a variety of services such as lab and other waste

# NEW FEATURES



TFS / About / Land Acknowledgement Statement

## Land Acknowledgement Statement

We acknowledge the Alaska Native nations upon whose traditional lands our field station operates. In Fairbanks, our Logistic Offices are located on the traditional lands of the Troth Yedha' Dena people of the Lower Tanana River. We acknowledge that Toolik Field Station and the surrounding areas are located on the ancestral hunting grounds of the Nunamut, and occasional hunting grounds and routes of the Gwich'in, Koyukuk, and Iñupiaq peoples. Toolik Field Station recognizes, and is grateful for, the Indigenous people who inhabit and steward this land.

We are endeavoring to become better stewards of the land that we research. When you visit Toolik Field Station, we invite you to join us in offering respect and gratitude to the Nunamut and their ancestors that have resided and hunted in this area. Please take a moment to consider the impact of colonialism to the Nunamut through the legacies of displacement, migration, and settlement over the past century. The Nunamut primarily live in Anaktuvuk Pass, a community about 65 miles (100 km) to the southwest of Toolik Field Station.

We request that all visitors to the station be respectful of any artifacts found or uncovered while traveling through, or conducting research in, the Toolik Field Station area. If you discover a potential artifact, please forward photographs and the GPS coordinates to the Toolik Field Station GIS department and they will contact the appropriate authorities and the archeologists from the Bureau of Land Management. This will help to ensure the integrity and preservation of these archeological sites.



TFS / Outreach / TUNDRA Award

## TUNDRA Award

### Overview

Toolik Field Station (TFS) is pleased to provide students and early career researchers with userday support to conduct their own independent research projects in Arctic Alaska with the TUNDRA award.

This competitive award supports the invaluable experiences afforded by conducting hands-on research in the field by offering access to TFS. Often funding for independent field work can be hard to secure for students and early career researchers. The TUNDRA award provides awardees with up to 10 TFS userdays that cover food, accommodations, support, and logistics while at the station. We encourage applicants from all disciplines to apply.

### Important Award Information

Please note that while applicants involved in an ongoing project at TFS will be considered, the TUNDRA award is intended to support original, independent research that is not specified in other awards.

Applicants are required to fund their own travel to Fairbanks, AK. Once in Fairbanks, the TFS team will handle logistics to get students up to the field station.

Additionally, TFS currently requires visitors to undergo a 10 day quarantine in Fairbanks before travelling to the field station. The TUNDRA award does not cover the costs of quarantine. Because of this, the TUNDRA award may currently be more readily used by students and researchers that have support to travel to Toolik on another project.

Please email [UAF-toolik-communications@alaska.edu](mailto:UAF-toolik-communications@alaska.edu) with any questions, comments, or concerns.

### Award Funding

The seed funding for this award was started by TFS staff and continues to be funded through ongoing donations to support early career researchers. TUNDRA is a



TFS / Outreach / Opportunities

## Toolik Opportunities

Staff Jobs ✕

Research ✕

Volunteer ✕

### Camp Supervisor

JOB OPPORTUNITY with Toolik Field Station

Deadline: 2022-02-24

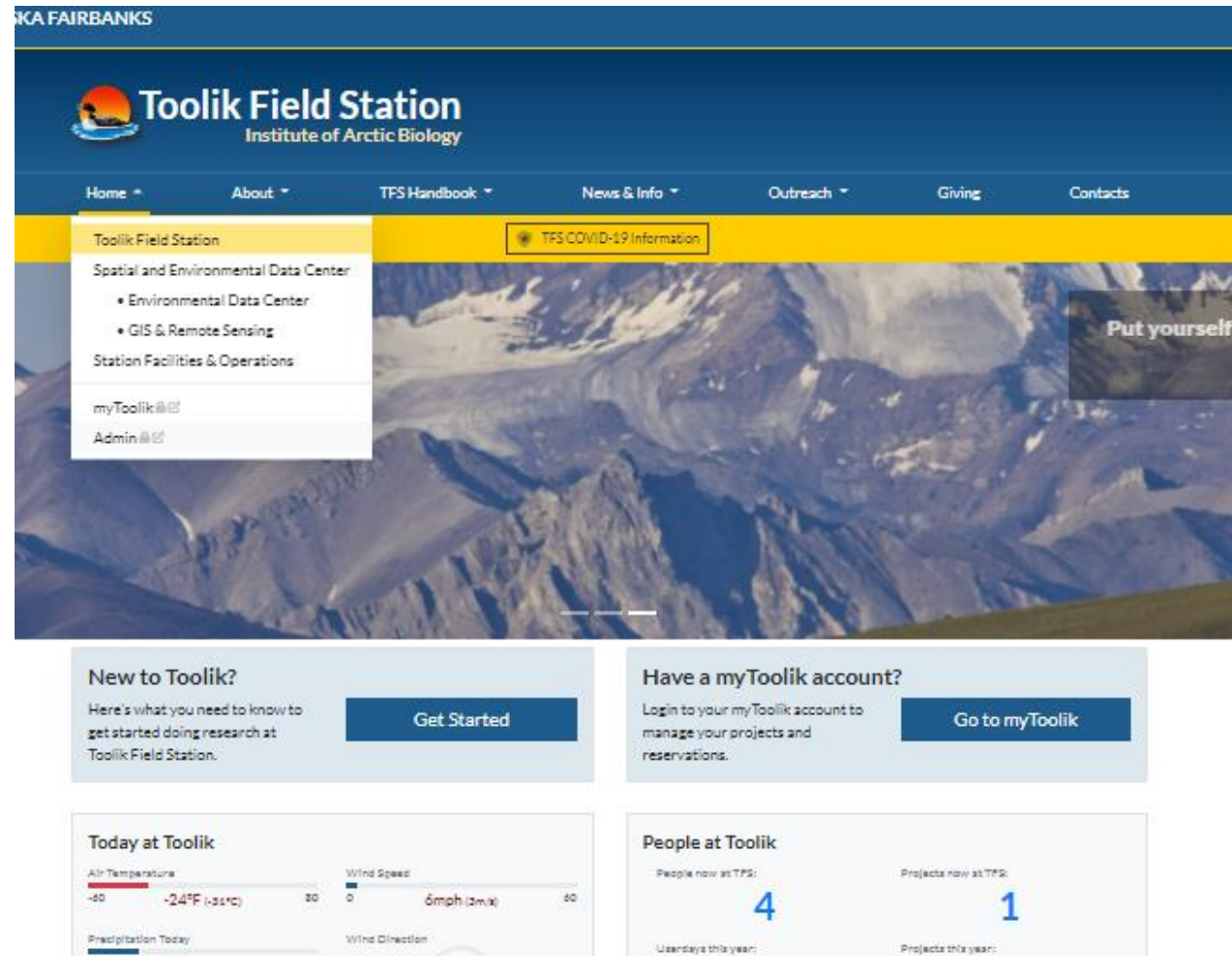
Toolik Field Station (TFS) is a world-renowned Arctic field station located 360

Check out the many opportunities at Toolik Field Station (TFS). Opportunities at TFS range from full time and seasonal staff, field technicians on research projects, REU experiences, graduate assistantships, faculty positions, and occasionally volunteer opportunities.

There's a lot of seasonal work for those who'd like



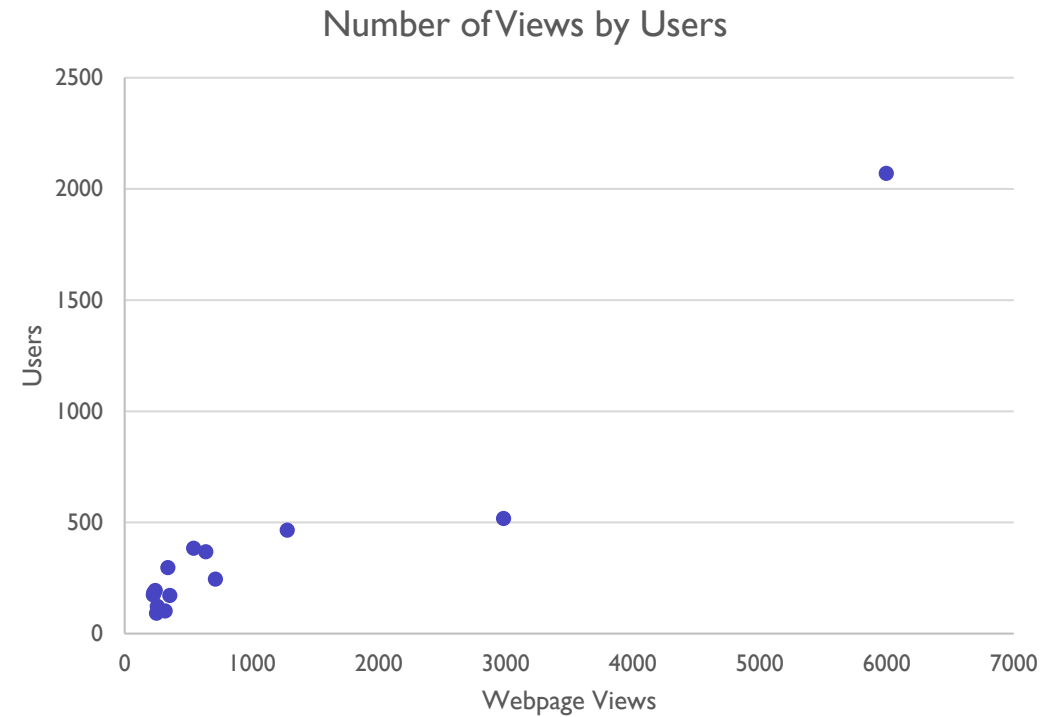
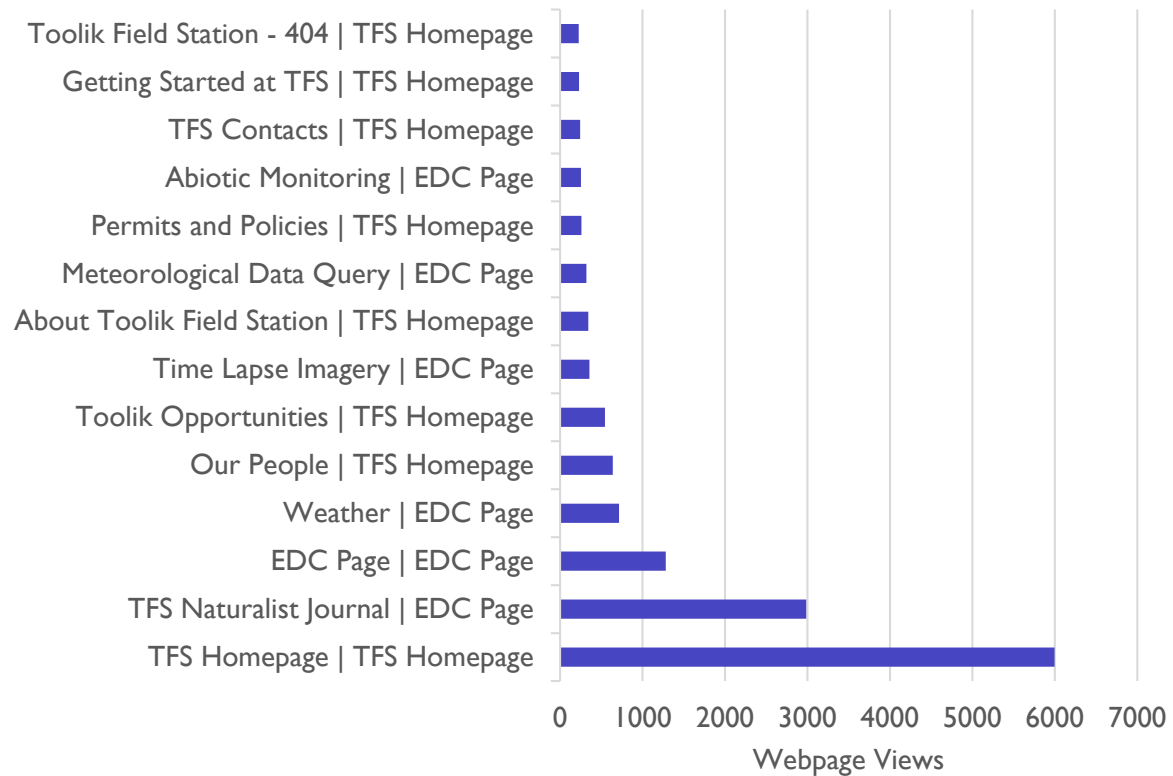
# SUPPORT REQUEST SYSTEM PART OF THE MYTOOLIK SYSTEM



Video tutorial of the SRS system

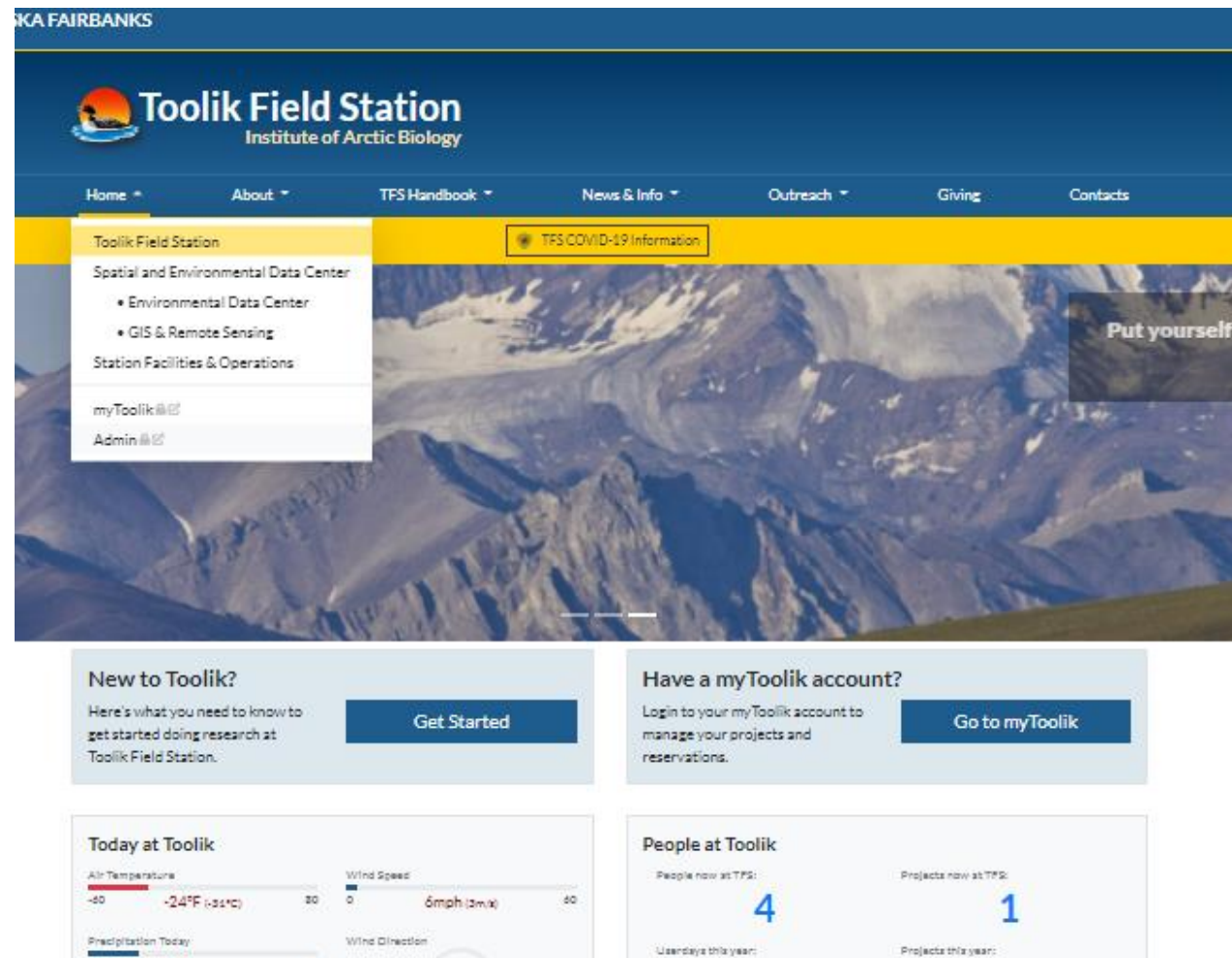
[https://media.uaf.edu/media/t/I\\_e311if2j](https://media.uaf.edu/media/t/I_e311if2j)

# VIEWERSHIP (AUGUST 15, 2021-DECEMBER 31, 2021)





# MYTOOLIK ACCESS FROM THE HOMEPAGE



The screenshot displays the Toolik Field Station homepage. The header includes the station's name and logo, along with a navigation bar. A dropdown menu is open under the 'Home' link, showing options like 'Spatial and Environmental Data Center', 'myToolik', and 'Admin'. A yellow banner highlights 'TFS COVID-19 Information'. Below the banner, there are two main sections: 'New to Toolik?' with a 'Get Started' button, and 'Have a myToolik account?' with a 'Go to myToolik' button. At the bottom, there are two widgets: 'Today at Toolik' showing weather data and 'People at Toolik' showing user and project counts.

**Navigation Bar:** Home, About, TFS Handbook, News & Info, Outreach, Giving, Contacts

**Dropdown Menu (Home):**

- Toolik Field Station
- Spatial and Environmental Data Center
  - Environmental Data Center
  - GIS & Remote Sensing
- Station Facilities & Operations
- myToolik
- Admin

**Yellow Banner:** TFS COVID-19 Information

**Hero Image:** Aerial view of a mountain landscape with the text 'Put yourself in'.

**New to Toolik?**  
Here's what you need to know to get started doing research at Toolik Field Station.  
[Get Started](#)

**Have a myToolik account?**  
Login to your myToolik account to manage your projects and reservations.  
[Go to myToolik](#)

**Today at Toolik**

| Air Temperature | Wind Speed  |
|-----------------|-------------|
| -24°F (-32°C)   | 6mph (3m/s) |

**People at Toolik**

| People now at TFS: | Projects now at TFS: |
|--------------------|----------------------|
| 4                  | 1                    |

**Usage Summary:**

| Users this year: | Projects this year: |
|------------------|---------------------|
|                  |                     |

# LOGIN AND USER PROFILE



## myToolik User Portal

**Welcome to myToolik!** This system allows you to register projects with Toolik Field Station and make reservations at the station. All users of TFS will have an account and profile in the system, which will allow for an easier and more accurate reservation process. All reservation requests must be associated with a registered and approved project. Once the project is approved, users will then be able to make housing reservations under that project.

Project registration, housing reservations, and truck reservations are the first stages of myToolik to be released. Additional stages will continue to be added, including userday and billing summaries, shipping and receiving, snowmachine requests, science support requests, EDC equipment requests, GIS requests, lab space assignment information, a TFS job board, and additional trainings.

Future stages of the system will allow PIs and TFS staff to add links to a project's publicly available data, lists and links of publications associated with projects, project images, and spatial data on project plots. All of this information will be searchable for all TFS projects, including spatially based on plot locations. Stay tuned for these exciting developments.

The myToolik system is new and still in development. If you have any questions or are experiencing any problems, please contact [uaf-iab-tfs-manager@alaska.edu](mailto:uaf-iab-tfs-manager@alaska.edu), [uaf-iab-tfs-logistics@alaska.edu](mailto:uaf-iab-tfs-logistics@alaska.edu), and [uaf-iab-toolik@alaska.edu](mailto:uaf-iab-toolik@alaska.edu) to your contacts to ensure that they do not get filtered to your spam folder.

**Are you not receiving myToolik emails?** Add [uaf-iab-tfs-manager@alaska.edu](mailto:uaf-iab-tfs-manager@alaska.edu), [uaf-iab-tfs-logistics@alaska.edu](mailto:uaf-iab-tfs-logistics@alaska.edu), and [uaf-iab-toolik@alaska.edu](mailto:uaf-iab-toolik@alaska.edu) to your contacts to ensure that they do not get filtered to your spam folder.

### TFS User Login

Use this form to **SIGN IN** if you have an account, **SIGN UP** if you don't, or **RESET** your password if you forgot it or this is a new account.

[SIGN IN](#)

[SIGN UP](#)

[RESET](#)

email  
|

password

[Sign in to myToolik](#)



Toolik Field Station



myToolik

Support



## User Profile

[EDIT PROFILE](#)

Checkmarked fields in your profile are required to make housing reservations at Toolik Field Station. Please edit your profile to complete all fields marked with a red check. Fields with a green check indicate required fields that have been completed.



Amanda Young

[new name or email?](#)



[amandabeayoung@gmail.com](mailto:amandabeayoung@gmail.com)

## Dashboard

[mySupport](#)

[Request Support](#)

[Reserve Equipment](#)

[Upcoming Reservations](#)

| Name | Dates | Project/PI |
|------|-------|------------|
|------|-------|------------|

truck reservations: 🚚 = pending, 🚚 = approved, 🚚 = alternate on waitlist

[Current Projects](#) → [5 current](#)

| Title | Dates | Status |
|-------|-------|--------|
|-------|-------|--------|

|                   |            |          |
|-------------------|------------|----------|
| TFS Staff - Other | 2016-08-01 | approved |
|-------------------|------------|----------|

Select the Support Button to request Support or Equipment

Space to insert Medivac Insurance  
Update your meal preference  
Select to receive emails from TFS

# LIST OF OPEN SUPPORT REQUESTS AND RESERVED EQUIPMENT



## Support Report

| Support Requests  |                           |                |          | ACTIVE | CLOSED |
|---|---------------------------|----------------|----------|--------|--------|
| Request #   | Title                     | Date Submitted | Status   |        |        |
| TFS Staff - GIS (Fulweber, Randy)                               |                           |                |          |        |        |
| 1251  | Site Selection Assistance | 2022-01-18     | assigned |        |        |
| Only support requests from the current calendar year are shown. |                           |                |          |        |        |

| Equipment Reserved  |           |        | CURRENT | PAST |
|---|-----------|--------|---------|------|
| Equipment   | Date/Time | Status |         |      |
| Only equipment reservations from the current calendar year are shown. |           |        |         |      |

Future improvements involve the number of RA completed thus far, so that PI, Lab Managers, and project managers can keep track.





# Support Request System

## Environmental Data Center



### Remote Access Requests

This form is to request remote access project support from the TFS Staff



### Field Assistance Request

Please let us know if you need any hands on field help while at Toolik or anything else we can assist you with.



### Suggestions of new types of data be collected

Suggestions of future types of data you would like to see the EDC collecting



### Suggestions for New Common Use Equipment

Let us know if there is a new piece of equipment you think the EDC should buy

## GIS & Remote Sensing



### Waypoints for GPS Unit

You provide us waypoints to load onto a GPS unit for you



### Map w/ coordinates

Request the GIS & RS Department to make a map

- Support Request System is not just for EDC requests
- Departments supported
  - EDC
  - GIS
  - Maintenance
  - Logistics
  - Operations
  - Tundra Award
  - Comments

# EXAMPLE OF A REQUEST FORM

First form you fill out will ask for PI and Project info.

## Remote Access Requests

This form is to request remote access project support from the TFS Staff

\* required

submitted by: Amanda Young (amandabeayoung@gmail.com)

PI/Lead\*

Select PI/Lead first...

Project\*

...then the project.

Type of project\*

Select which type of project assistance you are requesting. If you have more than one request, please fill out the form for each task.

How many people do you anticipate the task taking?

How many people do you anticipate the task taking? This will help us plan on having adequate staffing.

# GENERAL USE EQUIPMENT

## Toolik General Use Equipment

What we have: Toolik Field Station has a variety of general use equipment available. These items are owned and maintained by the Environmental Data Center Staff and can be used free of charge. We continue to expand the laboratory facilities at the station to provide the best possible equipment. Staff will be on hand to provide training and help with maintenance. We make every effort to keep the equipment in top running condition, however we ask for your patience if problems arise as parts and repairs take additional time due to the remote location of the station. Please see below for the current list of equipment.

Scheduling: Use the Equipment Calendar to submit a schedule request. Equipment is available on a first come, first served basis and must be scheduled in advance. We will try to accommodate all user requests and needs.

If you have recommendations for additional equipment or changes to existing equipment, please submit a User Input Form on the Contact Us page. We appreciate your comments.

### Environmental Data Center

Drying Ovens

Field Equipment

General Equipment

Incubation Facility

Microscopes

### GIS & Remote Sensing

Mapping Rovers

### Maintenance, Equipment Support & Fabrication

Augers

Boats

## Toolik General Use Equipment

What we have: Toolik Field Station has a variety of general use equipment available. These items are owned and maintained by the Environmental Data Center Staff and can be used free of charge. We continue to expand the laboratory facilities at the station to provide the best possible equipment. Staff will be on hand to provide training and help with maintenance. We make every effort to keep the equipment in top running condition, however we ask for your patience if problems arise as parts and repairs take additional time due to the remote location of the station. Please see below for the current list of equipment.

Scheduling: Use the Equipment Calendar to submit a schedule request. Equipment is available on a first come, first served basis and must be scheduled in advance. We will try to accommodate all user requests and needs.

If you have recommendations for additional equipment or changes to existing equipment, please submit a User Input Form on the Contact Us page. We appreciate your comments.

### Environmental Data Center

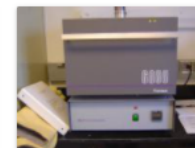
Drying Ovens

Field Equipment

General Equipment



Accumet AB150 Lab pH meter  
Quantity: 1  
Manual: [Accumet AB150 Lab PH Meter](#)  
Checkout Times: 6:00 to 12:00; 12:00 to 18:00



Barnstead Thermolyne 6000 Muffle furnace  
Quantity: 1  
Manual: [Muffle Furnace 6000](#)  
Checkout Times: full day



Eberbach 6010 Two-speed large shaker table  
Quantity: 1  
Manual: [Eberbach 6010 Shaker Table](#)  
Checkout Times: full day



Eppendorf 5810 Centrifuge  
Quantity: 1  
Manual: [Centrifuge 5810](#)  
Checkout Times: 6:00 to 12:00; 12:00 to 18:00



Fridge/Freezer Digital Thermometer: Traceable Jumbo Fridge/Freezer Digital Thermometer with Calibration; 1 Bottle Probe  
Quantity: 1  
Manual: [Fridge Freezer Thermometer-instruction-manual](#)  
Checkout Times: full day



Hot stir plate (7.25")  
Quantity: 1  
Checkout Times: full day



# HOW TO CHECK EQUIPMENT OUT

Check off which days you want to borrow the item

Hot stir plates (4.25")

Quantity: 2  
Checkout Times: full day

Quantity: 2  
Checkout Times: full day

Hot Stir Plates (4.25")

Quantity: 2  
Checkout Times: full day

Root Washing Station

Quantity: 1  
Checkout Times: full day

Hot Stir Plate (7.25")

Quantity: 1  
Checkout Times: full day


Microscopes

Incubation Facility

## Select the PI and Project here

**Equipment Cart**

Project: not set  
PI: not set

| Item   | Image   | Date: Quantity   | Action |
|--|---|--|--------|
| Hot stir plates (4.25")<br>Total quantity: 2 |  | <ul style="list-style-type: none"> <li>2021-01-27 0-24:<br/>Qty 2</li> <li>2021-01-28 0-24:<br/>Qty 1</li> </ul> | REMOVE |

**SUBMIT CART** **EMPTY CART**

If more than one available  
select the quantity here

# NUMBER OF SUPPORT REQUESTS

Number of requests by department in the Support Request System

| requests  |    |
|-----------|----|
| EDC       | 92 |
| GIS       | 48 |
| Logistics | 90 |
| MEF       | 8  |
| Ops       | 11 |
| Comments  | 3  |

Not all requests in 2021 were made in the Support Request System,

# THINGS IN THE WORKS

- Toolik Website
  - DEI efforts and statement of support
  - Interactive viewer of EDC datasets
  - Media releases about Toolik and Toolik Research
  - Mental Health resources
- myToolik
  - Updated Title ix training and quiz
  - COVID Mitigation acknowledgement check box
  - Hours of Remote Access report
  - Photo release form
  - Lab assignments
  - Integrate fuel to myToolik accounts





# THANK YOU

We are always looking for ways to improve our website and the myToolik System. If you have any comments, suggestions, or questions about the TFS Website and myToolik System please contact Amanda Young ([ayoung55@alaska.edu](mailto:ayoung55@alaska.edu)).