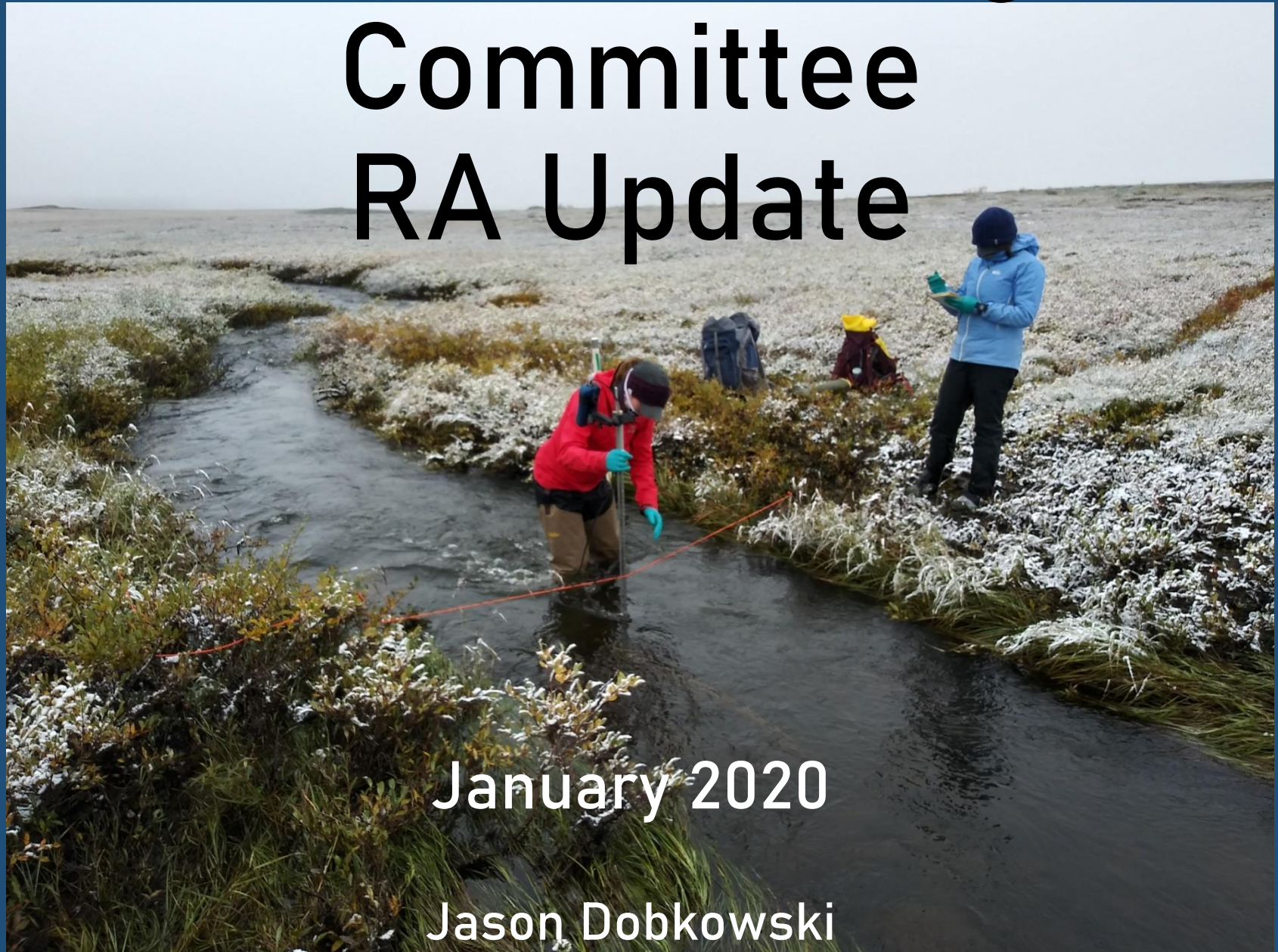


Toolik Steering

Committee RA Update



January 2020

Jason Dobkowski

RA's at

Toolik

- Most stay at TFS for full summer, or several trips
- Usually not students, but often working closely with graduate students or mentoring undergrads
- Carrying on research and making project decisions when PIs are not in

Working at TFS

- No major issues/hindrances for projects in 2019
- NSF Vehicles were available and critical for many projects
- Helicopter schedule seemed to work out well, pilots and coordinators were very well-liked
- Some confusion



Living at

TFS

Recent changes to food/beverage options were noticed, but not really a problem

- Lack of field hydration options if you don't have (or forget) a water bottle
- Sustainability is a priority for many –



the luxury
benefit



Title IX training and camp

culture Title IX training is adequate and helpful for the first time but some expressed that it is redundant for every year

- “Title IX” still used for innuendo jokes throughout camp
- Some concerns voiced about bonfire and sauna behavior and safety

Mental Health in

Camp

Request for a therapy dog

- Mental health a concern, especially for those at TFS from prolonged stay, away from home
- Single rooms make a huge difference during a long stay
- Camp resources/counselor available?

EDC

Support remains critical for many projects
especially early/late season

- Amanda Young and Jade Lawrence both noted as *incredibly helpful* to several projects
- Upgrades to website helpful, and real-time data availability is crucial for planning

TFS Shared

Equipment

- Request for a shared NDVI measurement tool (e.g. Greenseeker or rapidSCAN)
- VanDorn water sampler?
- Online sign-out worked well, but not used by all
- No major equipment conflicts mentioned
- Mis-use of sensitive equipment

GIS

Support

Drone surveys are a highly-valued new option for many projects

- Coordination with GIS and drone scheduling, especially because of weather presented challenges for some
- Jorge was great and “**absolutely essential**” for helping with LTER GIS surveys

Sample Storage and

Shipment

Storage space in camp was adequate,
walk-in chiller useful

- Frozen sample transport and Fairbanks storage and shipment is a bit troublesome
- Science truck schedule doesn't work well for next day shipment (i.e. Wednesday and Friday Trucks) → especially UPS

Summary

- 2019 was a very good season for most projects/RAs
- Camp staff has been outstanding and helpful, especially ED
- No serious complaints or concerns expressed about future needs
- Sustainability and mental health should

