



U.S. Department of the Interior
Bureau of Land Management

2018 BLM Update

Toolik Field Station Steering Committee Annual Meeting

Bill Hedman, Central Yukon Field Office, Assistant Field Manager
whedman@blm.gov

Chel Ethun, Central Yukon Field Office, RMP Project Manager
methun@blm.gov

Crystal Glassburn, Central Yukon Field Office, Archaeologist
cglassburn@blm.gov

Tom St. Clair, Fairbanks District Office, Fire Management Officer
tstclair@blm.gov





2018 BLM Update

- Large Project Updates, Bill Hedman
- Central Yukon Resource Management Plan, Chel Ethun
- Proposed 2018 TFS Cultural Surveys, Crystal Glassburn
- Proposed Changes to Fire Management Options at TFS Tom St. Clair.





2018 BLM Update

Alaska LNG (liquefied natural gas)

- 800 mile 42" buried pipe, multiple compressor stations
- AGDC is proponent, FERC is the regulatory lead for the EIS
<https://alaska-lng.com/>
- Requires a BLM ROW, negotiating cost recovery agreemtn
- FERC has received formal application and will be drafting alternatives
<https://energy.gov/nepa/eis-0512-alaska-lng-project-alaska>
- Once preliminary draft EIS is reviewed by cooperating agencies there will be an opportunity for public comment.

Alaska Stand Alone Pipeline (no liquefaction, north slope compressor station)

- AGDC also proponent, USACE is the regulatory lead for the EIS,
<http://www.asapeis.com/>
- Prudhoe Bay Conditioning Facility, 733 mile 36" pipe
- Final Supplemental EIS, this spring, a 90-day public comment period will follow

****Both Projects involve pipeline infrastructure and material sources in the RNA****



2018 BLM Update

Ambler Road Project

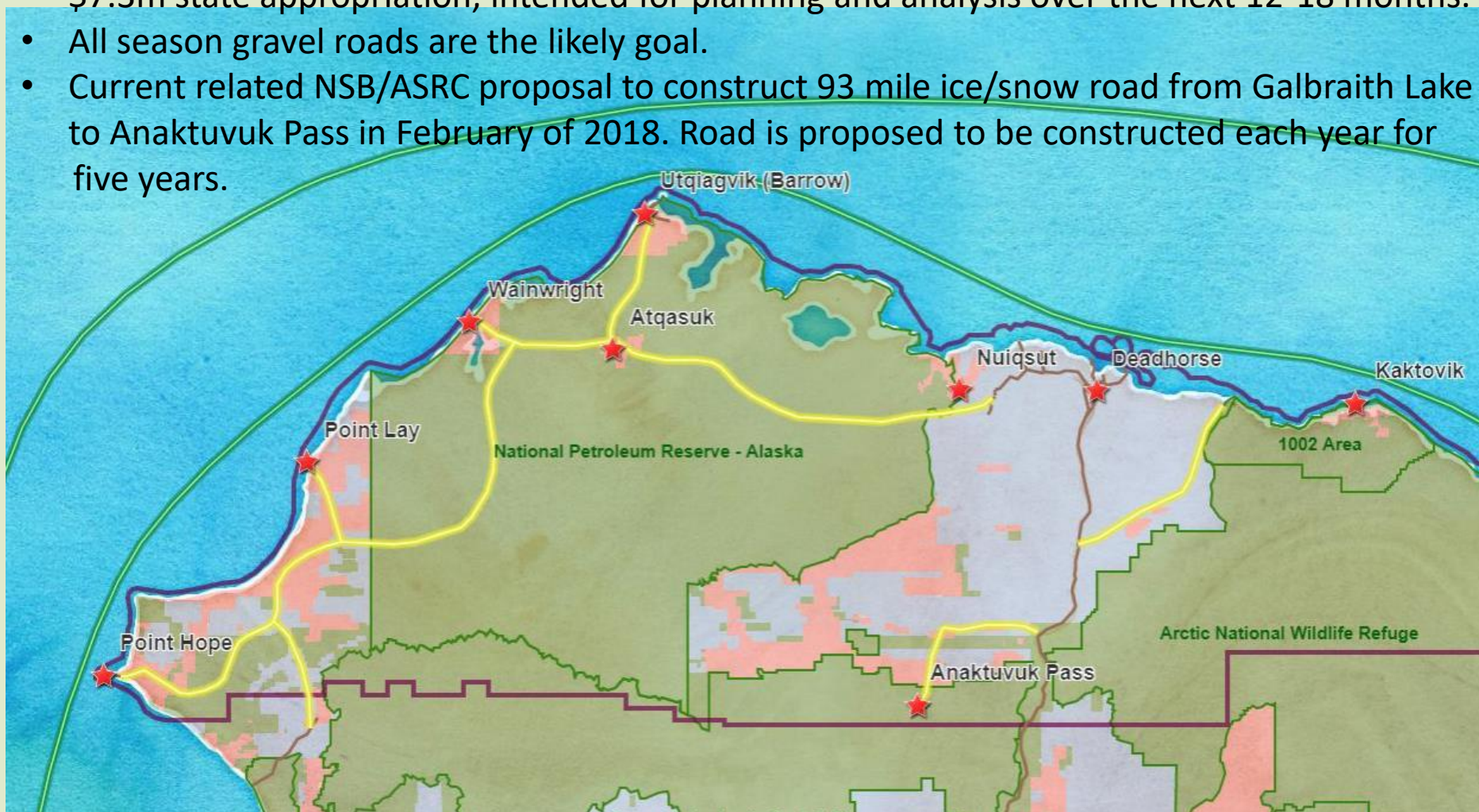
- 200 mile long industrial access road to Ambler Mining District, beginning at DHMP 161.
- Alaska Industrial Development and Export Authority (AIDEA) is proponent
- <http://www.aidea.org/>
- BLM is the regulatory lead for the EIS, <https://www.blm.gov/AmblerRoadEIS>
- Initial public scoping period ended 1/31/2018
- Project is funded by AIDEA through May, this will take the project through Alternatives Development and Data Gap Analysis. Next step is production of Draft EIS.
- NPS will determine route through GAAR through Environmental and Economic Analysis (EEA), per ANILCA Title XI, NPS process concurrent with EIS process
<http://www.ambleraccess.com/>



Arctic Strategic Transportation and Resources (ASTAR) project

<http://soa-dnr.maps.arcgis.com/home/item.html?id=632aa46c3ac14bec9e6e360bb40a3c6d>

- Conceptual project, focused on the development of transportation infrastructure.
- \$7.3m state appropriation, intended for planning and analysis over the next 12-18 months.
- All season gravel roads are the likely goal.
- Current related NSB/ASRC proposal to construct 93 mile ice/snow road from Galbraith Lake to Anaktuvuk Pass in February of 2018. Road is proposed to be constructed each year for five years.





Central Yukon Planning Area

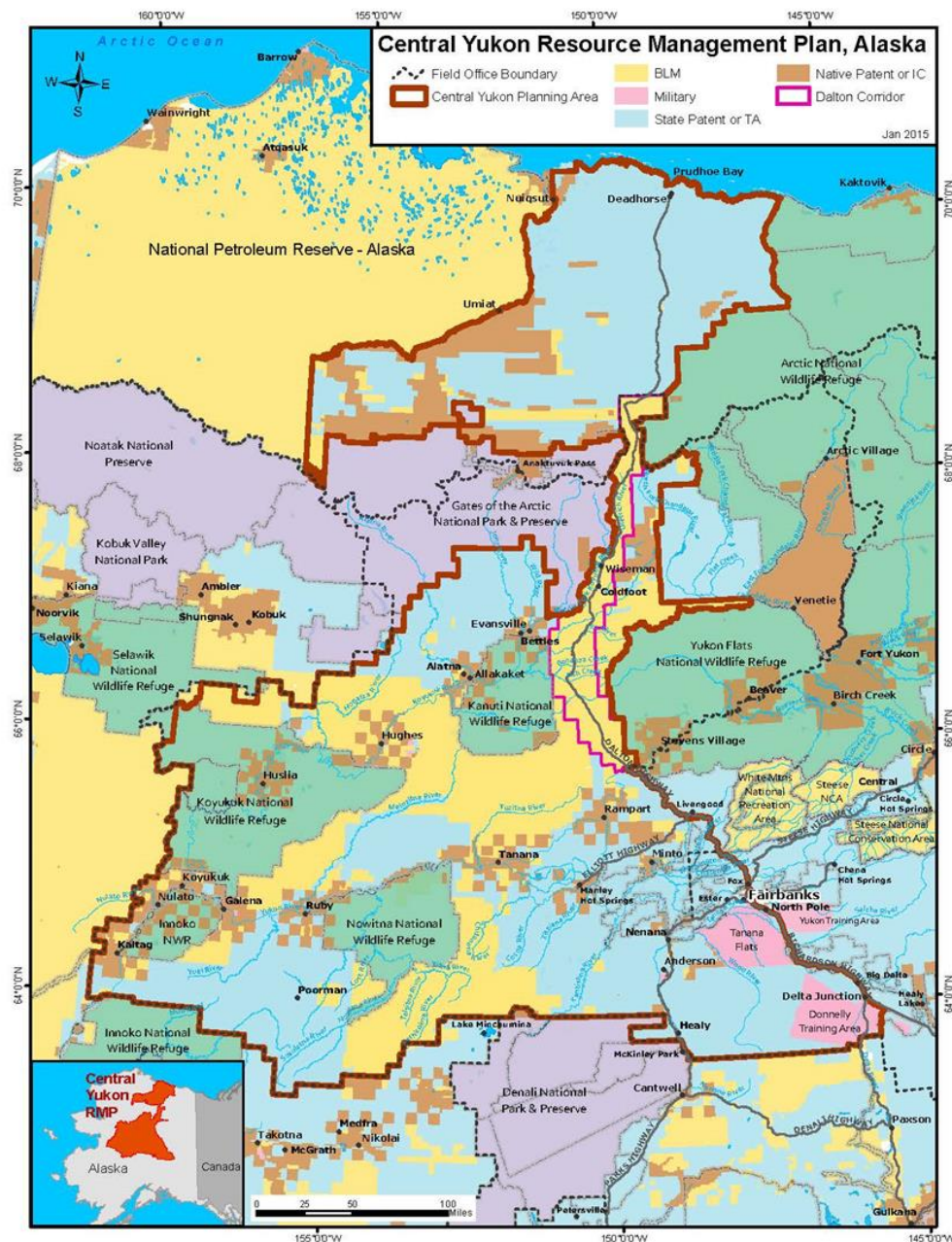
Planning Area

13 million acres of BLM managed land

- 4.3M State selected
- 0.7M Native selected
- 8.0M unselected

Partnering Opportunities

- 24 remote communities
- 19 Tribes
- 3 regional corporations
- 12 village corporations
- State of Alaska
- 2 National Park units
- 7 National Wildlife Refuges
- Military lands





What is a Land Use Plan?

BLM Mission: “Sustain the health, diversity and productivity of the public lands for the use and enjoyment of present and future generations.”

Land Use Plans:

- Long-range (20 + years)
- Comprehensive (consider all natural resources)
- Make resource decisions (extraction, protection, special designations)
- Landscape level (versus specific proposed projects)
- Manage change over time and resolve issues that exist

Central Yukon
Resource Management Plan





Recent Planning Steps

Preliminary Alternatives Concepts Public Outreach

- Open comment period - January-April 2017
- 12 public meetings to review the preliminary alternative concepts.
- Summary Report available on planning website.



PROCESS MILESTONES

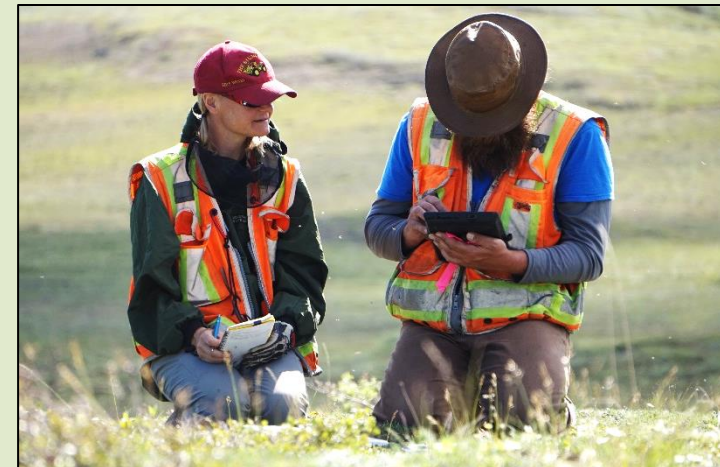
PUBLIC PARTICIPATION





Cultural Surveys

- Toolik/Atigun/Sag region occupied for 10,000 years
 - 518 known sites within 40 km radius of TFS
 - 96 sites have been evaluated for the National Register of Historic Places; 84% of these are eligible
- To date, no systematic survey for cultural sites
 - Required for federal permits (BLM) and funding (NSF)
- NSF considering funding partial surveys in 2018
 - Survey high-probability/high impact areas; provide presence-absence data
 - Streamline BLM Authorization reviews and preserve/protect cultural resources from disturbance






Proposed 2018 Fire Management Option Change at Toolik Field Station



This map displays the Toolik River Basin, highlighting research sites and fire history. A red outline indicates the area to change from Limited to Full Protection, covering 130,000 acres. Black dots represent Toolik Research Sites. A pink line shows the Fire History. The Trans-Alaska Pipeline and Roads (DOT) are also shown. The map includes a scale bar (0 to 20 miles) and a north arrow.

Legend:

- Area to change from Limited to Full Protection - 130,000 acres
- Toolik Research Sites
- Trans-Alaska Pipeline
- Roads (DOT)
- Fire History

 Area to change from Limited to Full Protection - 130,000 acres

- Toolik Research Sites

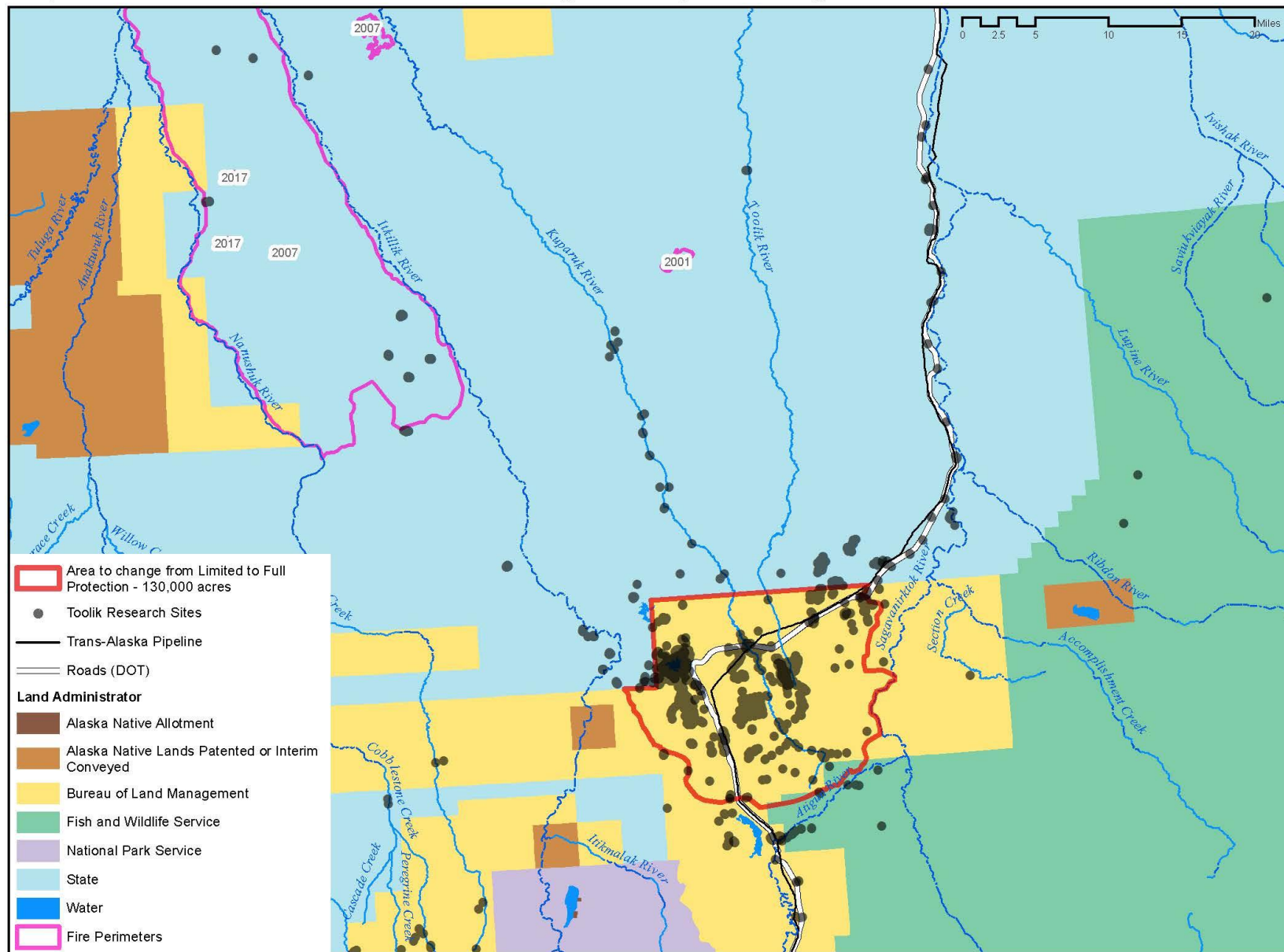
—— Trans-Alaska Pipeline

== Roads (DOT)

Fire History

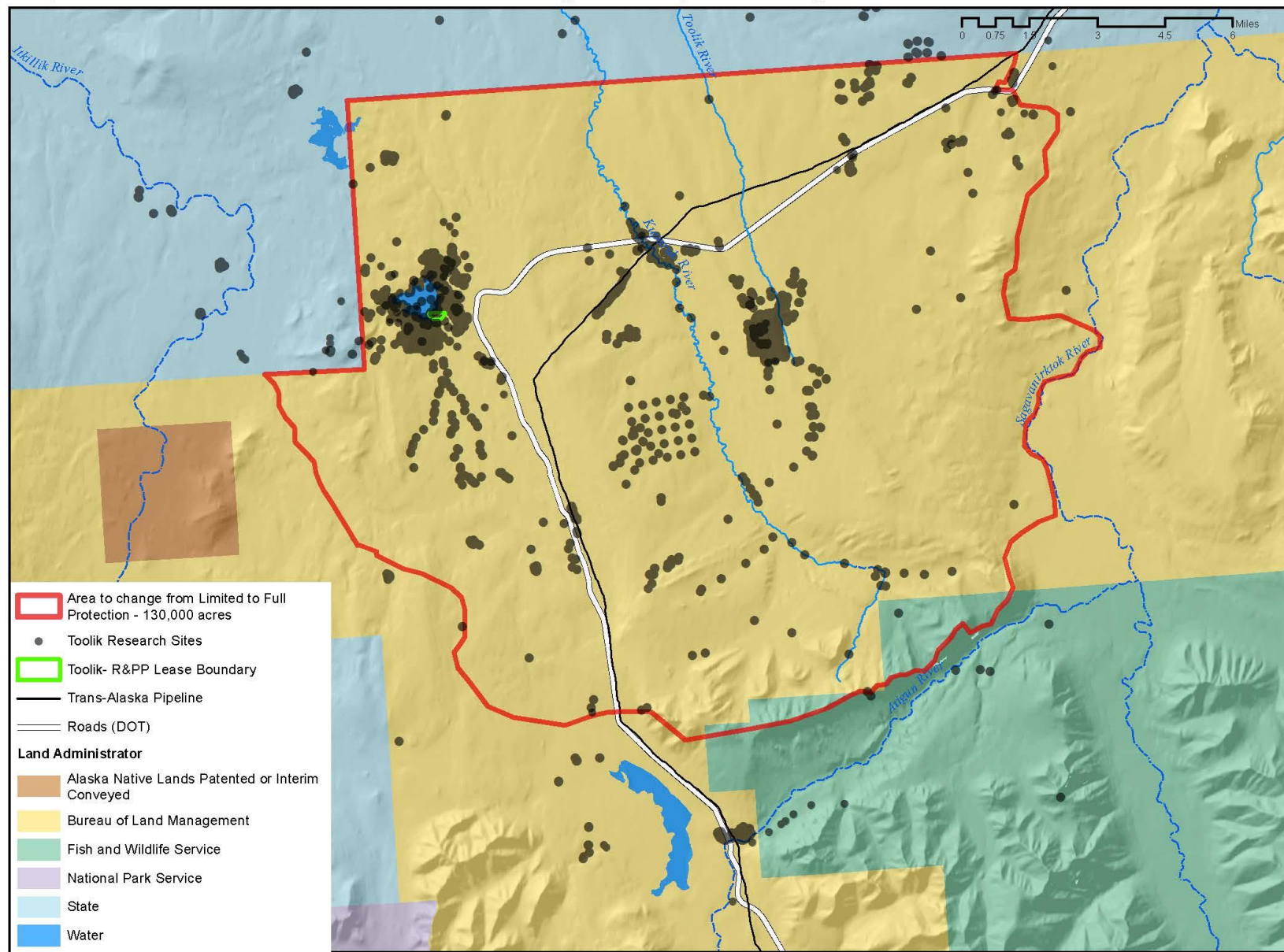


Proposed 2018 Toolik Field Station Fire Management Option Change





Proposed 2018 Toolik Field Station Fire Management Option Change





U.S. Department of the Interior
Bureau of Land Management

2018 BLM Update

Toolik Field Station Steering Committee Annual Meeting

Bill Hedman, Central Yukon Field Office, Assistant Field Manager
whedman@blm.gov

Chel Ethun, Central Yukon Field Office, RMP Project Manager
methun@blm.gov

Crystal Glassburn, Central Yukon Field Office, Archaeologist
cglassburn@blm.gov

Tom St. Clair, Fairbanks District Office, Fire Management Officer
tstclair@blm.gov

