

# **Toolik Steering Committee Research Assistants/Technicians**

**Portland, Oregon  
23 January 2016  
Dan White**

# 2015

- Lots of shoulder season work
- Spring setup launched well
  - Good TFS support
- Dalton Hiway Xpress charter
- No major issues with on-site construction/contractors
- Road work not an issue
- Good communication w/ helo coordinator
- Some issues w/ haz waste need to be sorted out

# Hazardous Waste

- Coordinate with EHS officer before the season starts
- Switch from liquid rad waste drum to carboys
- Rad Waste Transfer forms
- Sharps Containers

# New Equipment

- Need more Bulk Containers available



# Cafeteria/Lounge/Entertainment

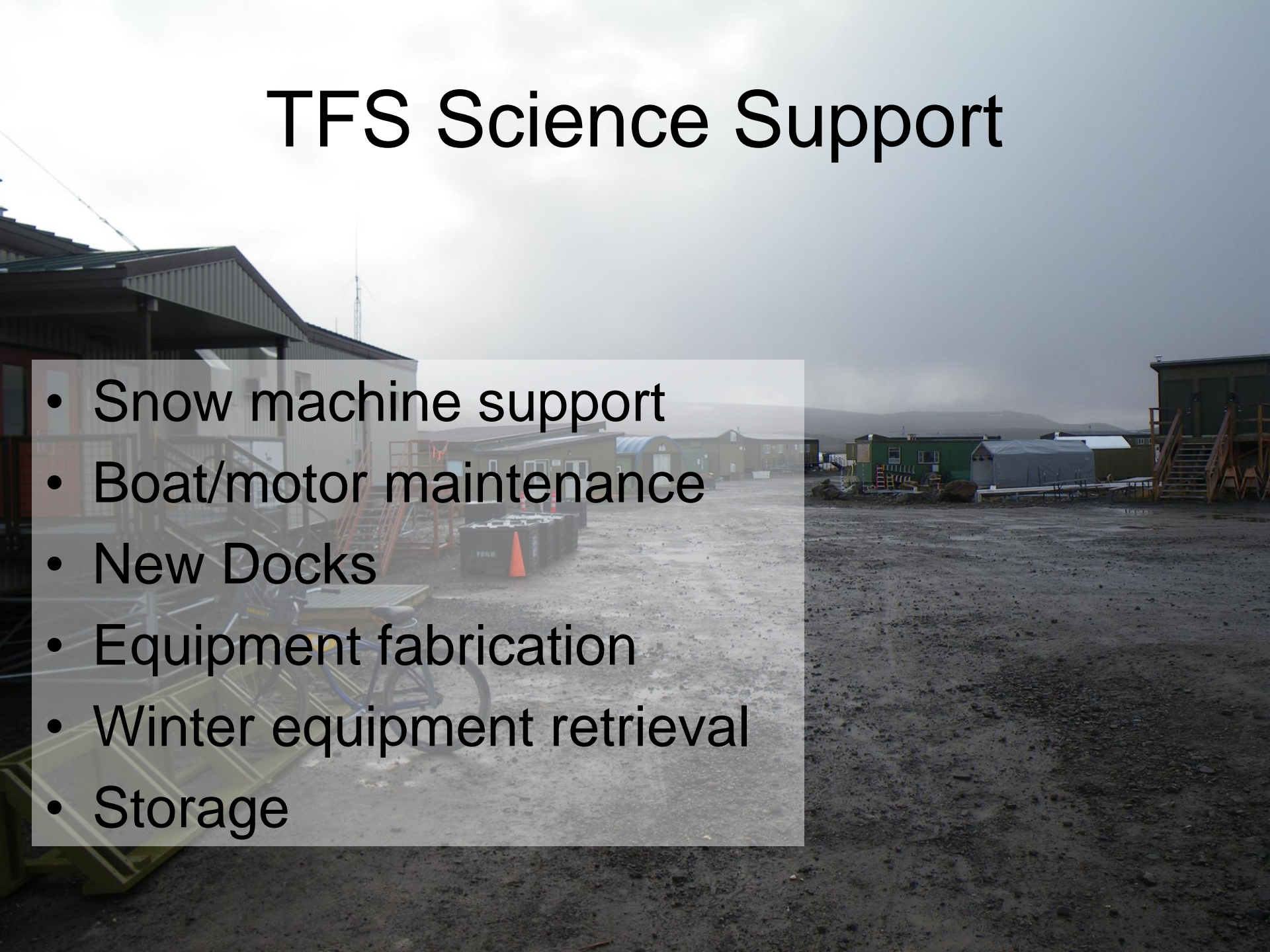
- No complaints about quality/quantity of food
  - except for my wife complaining about my expanded girth
- Plenty of lounge space
- New exercise gym appreciated
- Plenty of extra-circular activities
- Appropriate/Professional behavior





# TFS Science Support

- Snow machine support
- Boat/motor maintenance
- New Docks
- Equipment fabrication
- Winter equipment retrieval
- Storage





# EDC

- 
- EDC on ten Late-Season sampling trips
  - EDC filtering DNA samples for Crump group
  - Collating historical data



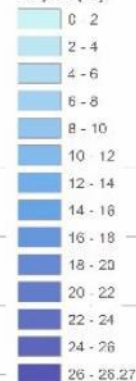
## Toolik Lake

UTM NAD83 Zone 6 North  
2m Contour Intervals

# GIS Office

- Bathymetric maps
- Maps and appropriate sites for permit applications
- Satellite imagery
- We need to collaborate on resolving lake names conflict

Depth (m)



Toolik Lake Bathymetry Map  
Reference: Canadian Geomatics Centre (CGCC) 1000 Series  
1:50,000 Scale, 1995

Map by: J. H. Hogg  
Date: 1995  
Map of Lake 15  
Map of Lake 15  
Map of Lake 15  
Map of Lake 15  
Map of Lake 15



0 100 200 300 400 500 Meters



# Early/Late Season Travel

- **GAS!!!**

- What is open and when?
- Emergency supplies



# We love Toolik!

- Chad, Justin, Jeb, Faye, and FOA's are wonderful!
  - They keep us alive and happy
- Science support was great
  - Thanks for all the hard work in making sure we can get our work done!
- GIS – Thanks Jason and Randy
- EDC – Seth and Brie helped keep us running smoothly
- Kitchen crew kept us fat and happy