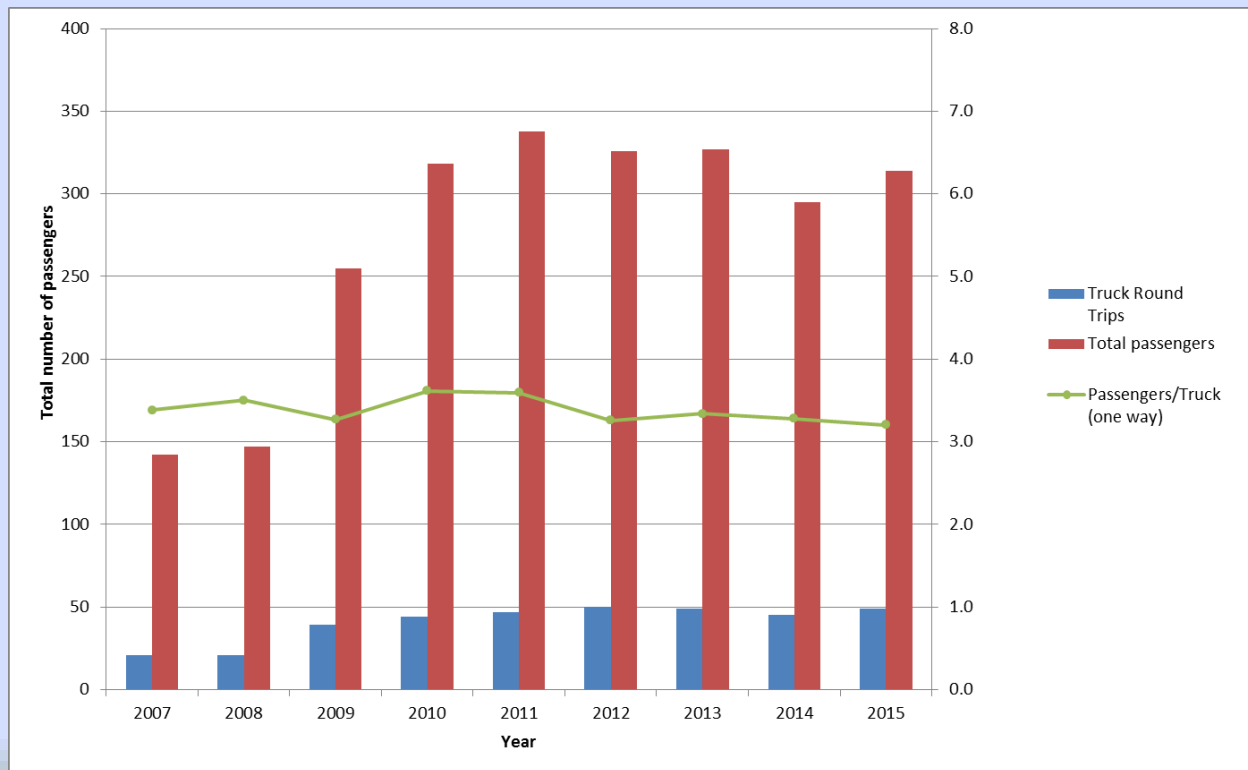


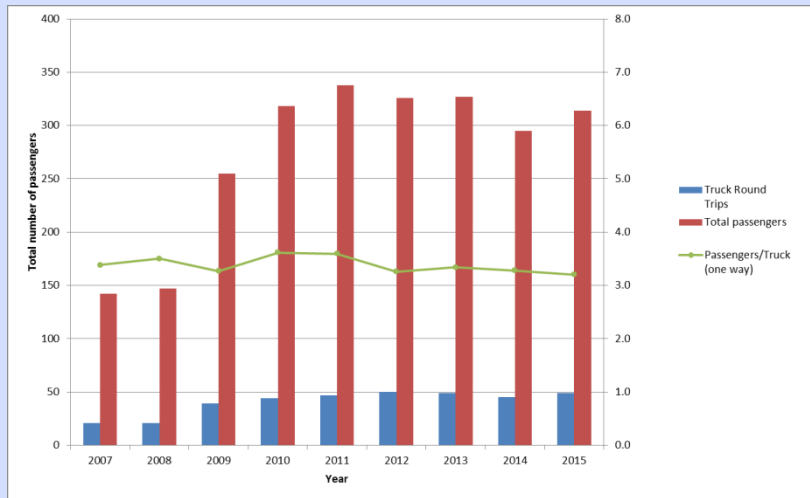
Fairbanks – TFS Transportation

- From April through September we provided twice weekly truck runs prioritized for scientists between FAI and TFS. In 2016 science trucks transported 314 passengers in 49 round trips.



Fairbanks – TFS Transportation

- We added a trial Dalton Highway Express charter during the peak of the summer field season in 2016, supporting an additional 98 passengers in 13 round-trips



Science Trucks Only



Including DHE in 2016



DHE Charter

- Overall the DHE charter service was a success. We were able to accommodate an additional 98 passengers at a price lower than buying individual tickets on the DHE tourist service, with overall substantially better service
- However, service quality was not consistent, and highly dependent on the driver
- We plan to continue the service in 2016, but will negotiate with the DHE for a small number of mutually agreed upon drivers.



Vehicle Tracking System

- All primary TFS vehicles are now equipped with systems that track location, speed, braking, cornering, and other performance data
- The system warns drivers in real time when set thresholds (speed limits) are exceeded
- The system will send a notice to TFS staff when a truck arrives at TFS or in Fairbanks and report on basic trip data

Vehicle Tracking System





Vehicle Tracking System

- It's movie time!

2015 TFS Utilities

- Power: 528 Mwh
- Fuel: 65,165 gallons of diesel
 - Generators: 42,967 gallons
 - Heating: 17,306 gallons
 - Trucks/Equipment/Incinerator: 4,891 gallons
- Water: 194,787 gallons produced, 17.56 g/ud
 - WHO: 13-26 g/ud are required for basic health
- Highlights: monthly report available to the