

Toolik Field Station

Report 2015

Mike Abels, Bret Biebuyck
Chad Diesinger, Jeb Timm,
Skye Greer



Report Year

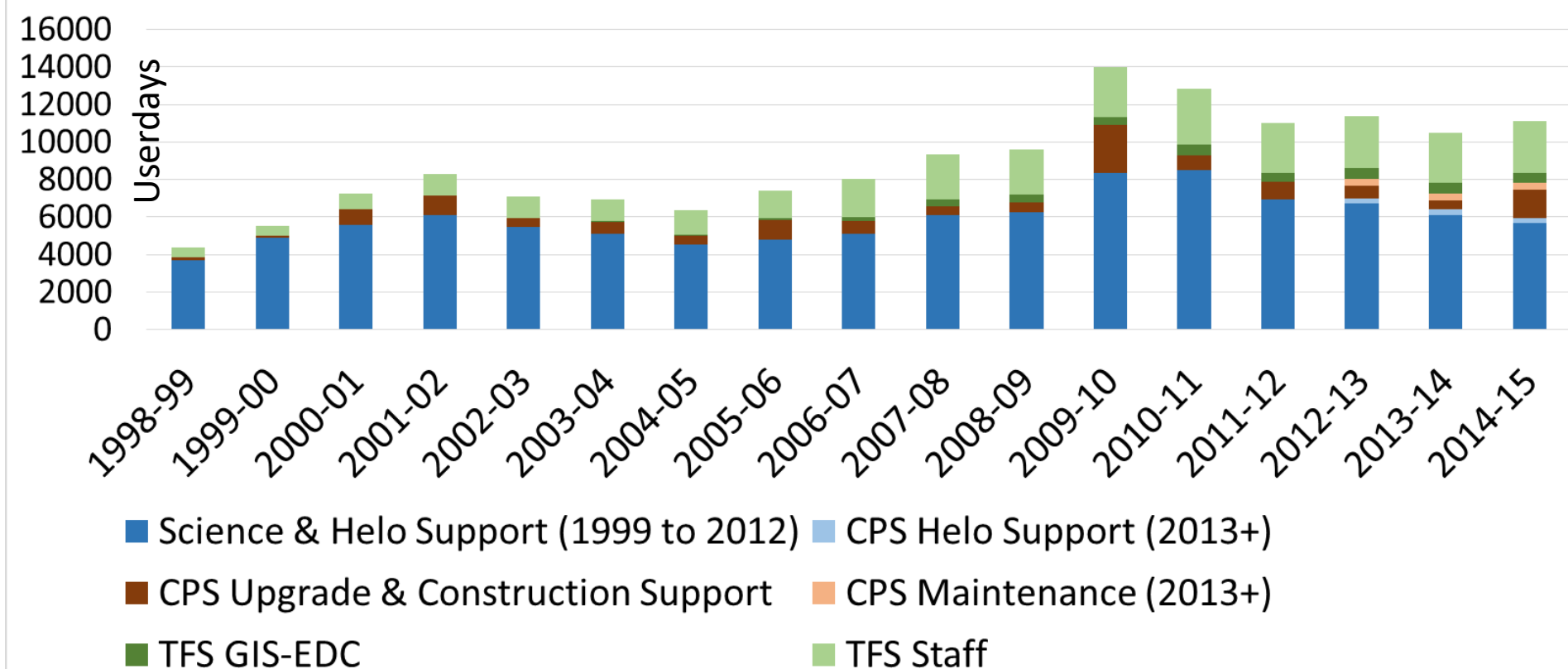
Oct 1 to Sept 30

METRICS 2014-15	USERDAYS	INDIVIDUALS	
TFS/IAB/UAF Staff & Service	2743	21	
TFS GIS	552	6	
CPS Maintenance (Tim/Russ)	369	2	
CPS Science Support (Safety, IAWG, Fbks Office)	34	16	
CPS Construction (Jason's Crew)	673	19	
CPS Garage Oversight	82	6	
JRE Garage Contractor	686	41	
CPS Helicopter	302	10	
Science	5653	457	
	11094	578	

Toolik Field Station Userday Totals

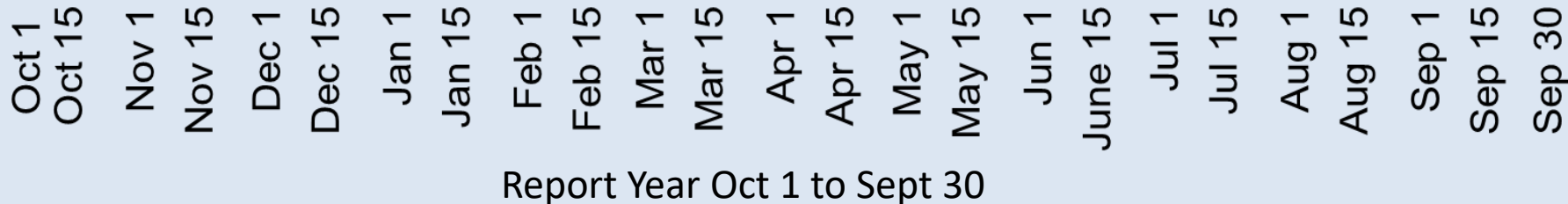
Report Year Oct 1 to Sept 30

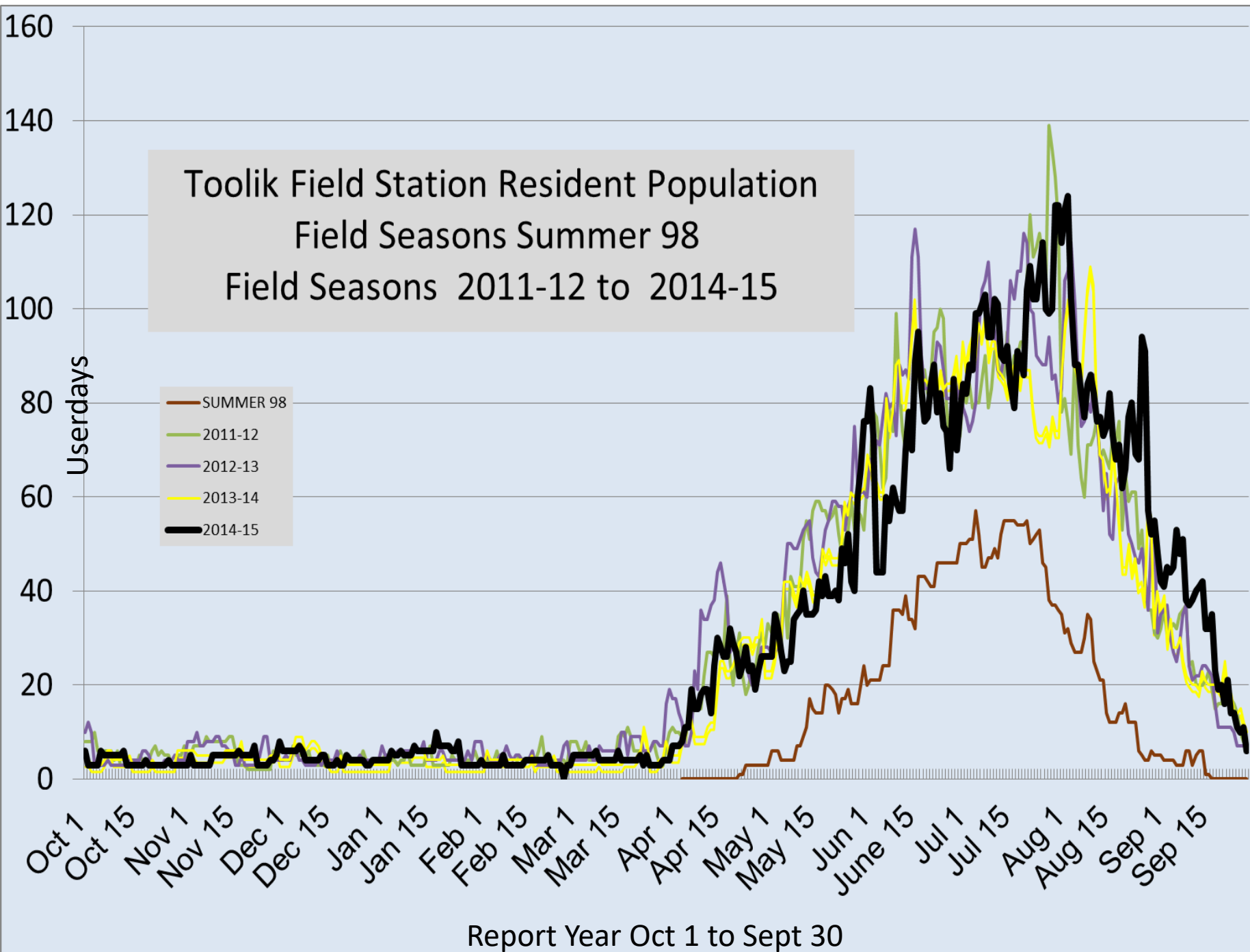
NOTE: in 2013, CPS maintenance and helo support were broken out of CPS and science & science support, respectively



Toolik Field Station Resident Population
Oct 1 to Sept 30
Field Seasons
2010-11 to 2014-15

Userdays





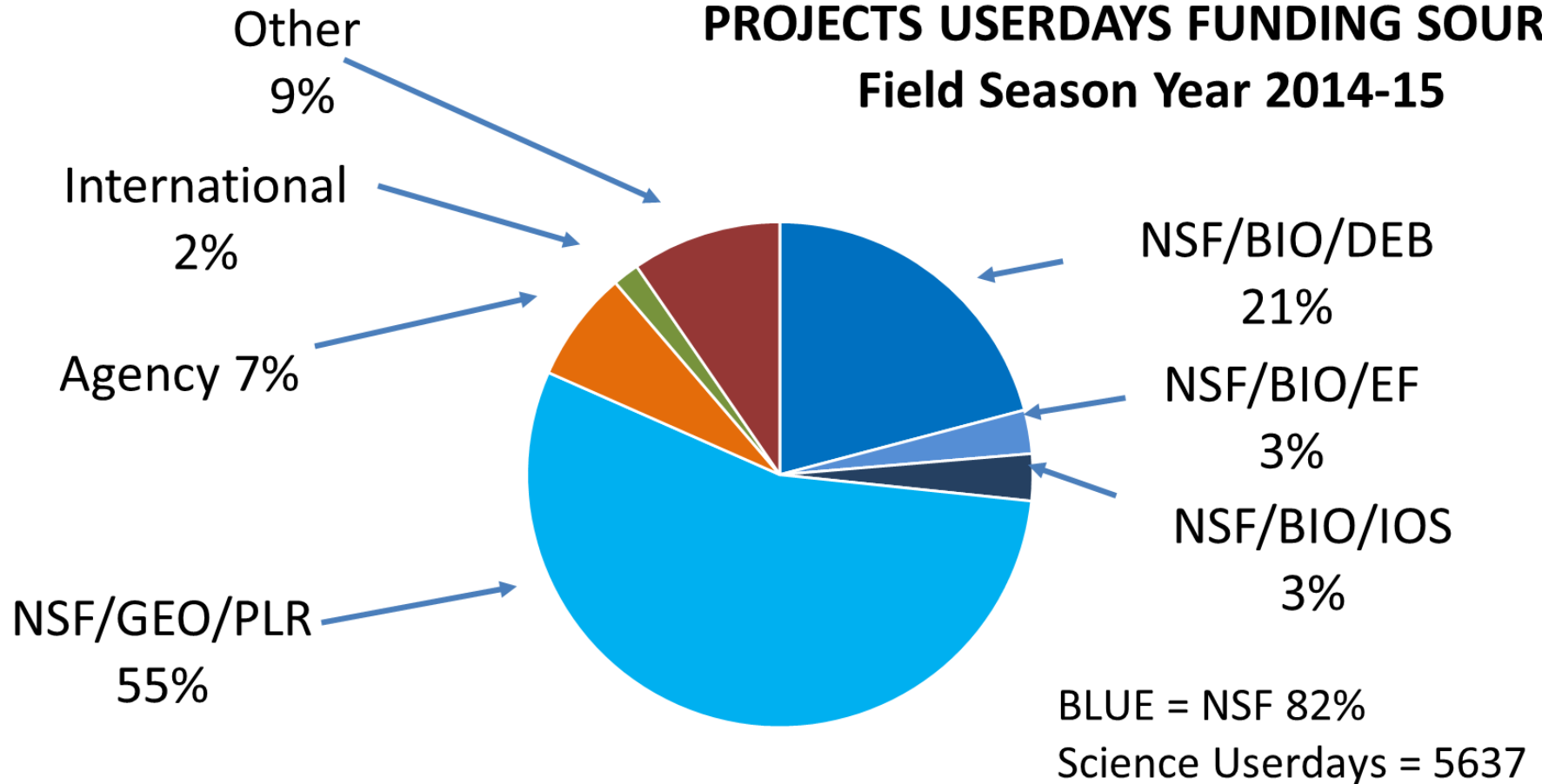
ORGANIZATIONS and INSTITUTIONS 2011-15

Toolik Field Station

Report Year Oct 1 to Sept 30	Number
2011-12	95
2012-13	93
2013-14	104
2014-15	108
ANNUAL AVERAGE 2011-15	100
UNIQUE 2011-15	238

PROJECTS USERDAYS FUNDING SOURCE

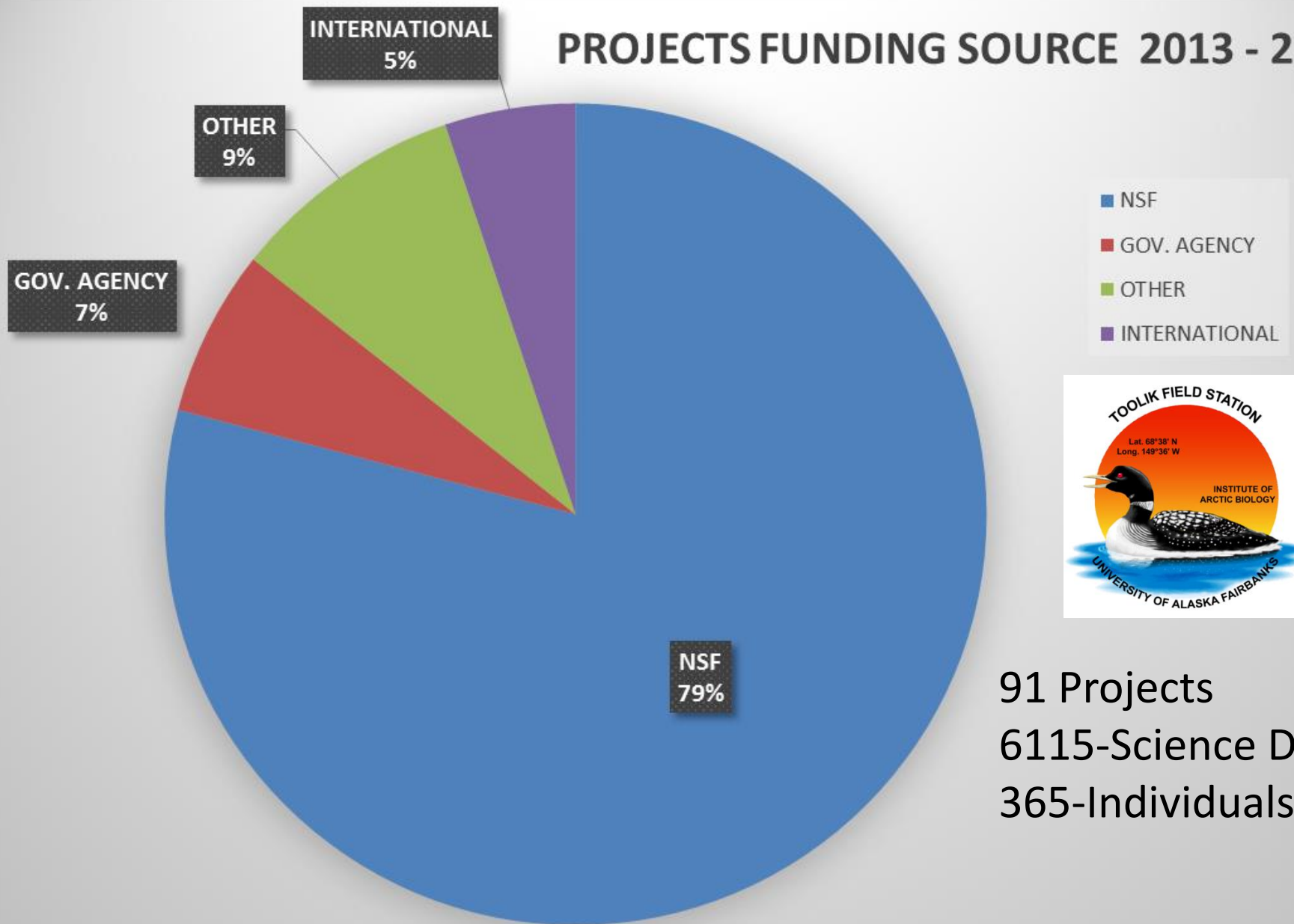
Field Season Year 2014-15



AGENCY: BLM, NASA, AKDOT, USARMY, USGS

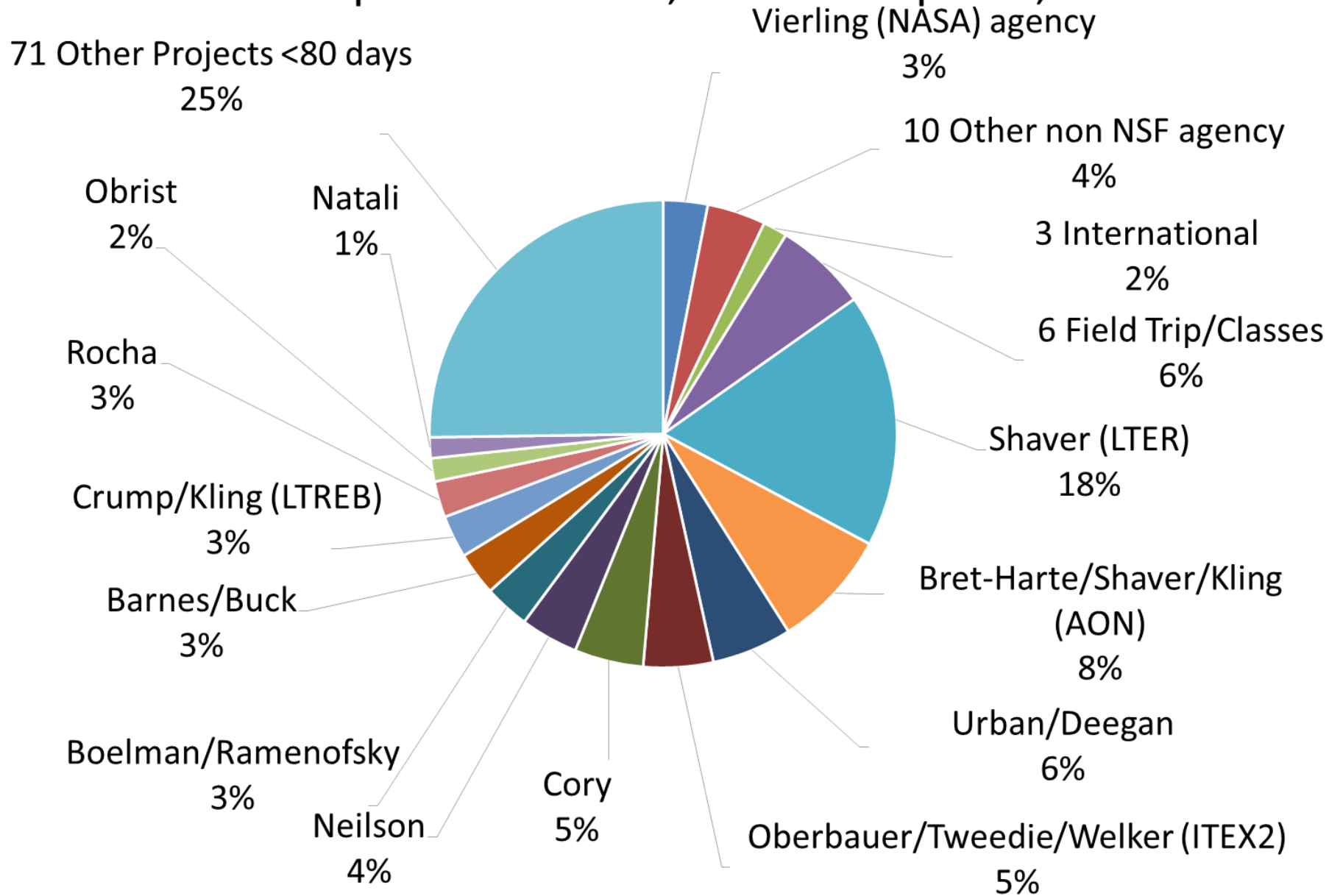
OTHER: Universities, Field trips, Courses, Graduate research.

PROJECTS FUNDING SOURCE 2013 - 2014

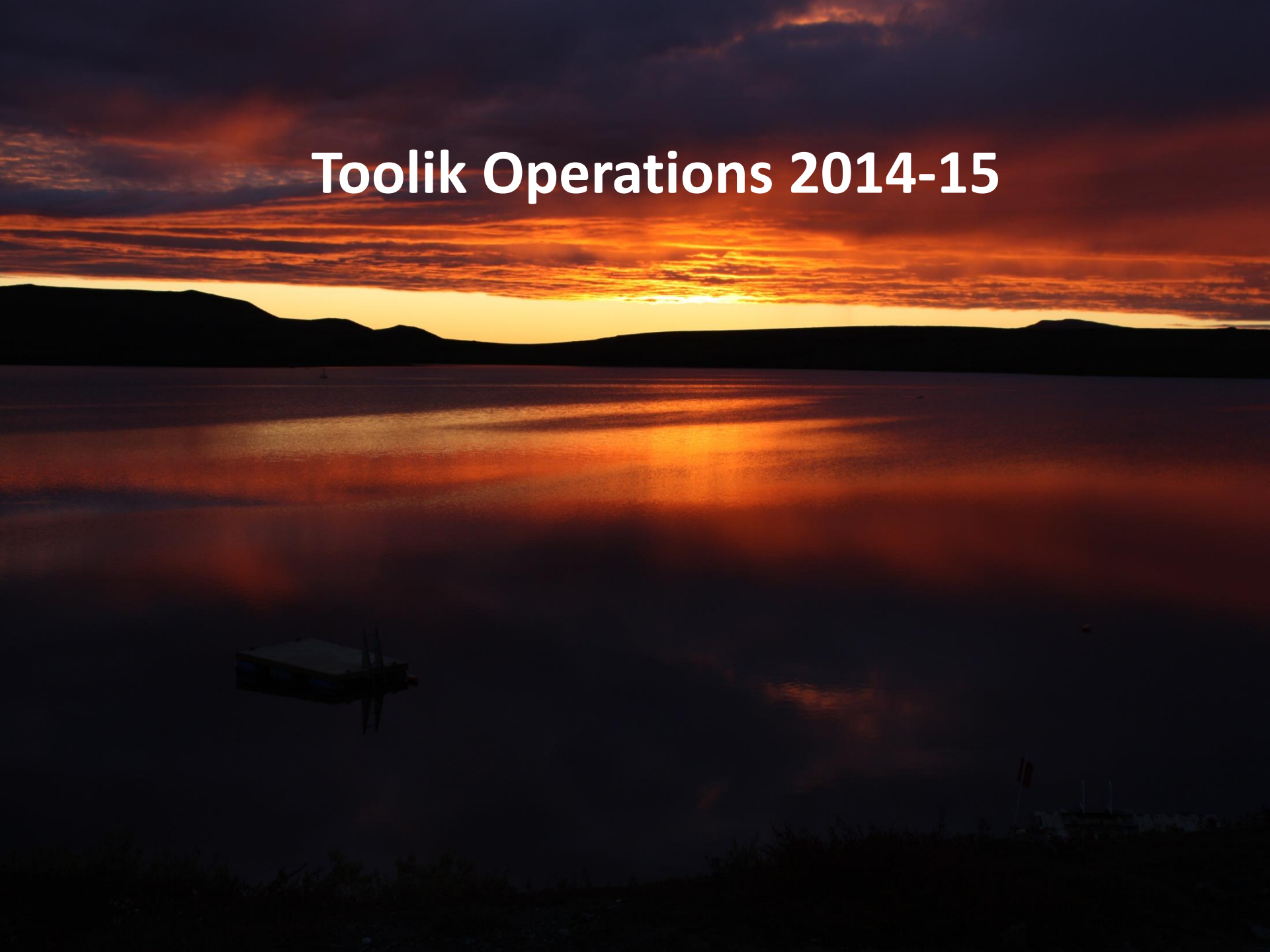


91 Projects
6115-Science Days
365-Individuals

PROJECTS Report Year Oct 1, 2014 to Sept. 30, 2015



Toolik Operations 2014-15



Season Highlights

- Another good year at TFS (Business as usual)
- Extended road closure north of Toolik required some operational restrictions late winter and early spring
- Construction of a new garage was completed last summer
- Dalton Highway improvement project around TFS was finally completed!
- Toolik Health Club addition was completed (with new propane heater)

Dalton Highway Flooding

2015/5/18



One New Garage, Many Benefits

- Garage will alleviate need to heat Shop Trailer, Dry Lab and Loader Tent
- Warm storage is now in garage mezzanine making room in Winter Lab for science
- Most of the required heat for garage supplied by waste heat from the generators
- Increases amount of maintenance projects that can be done in winter

