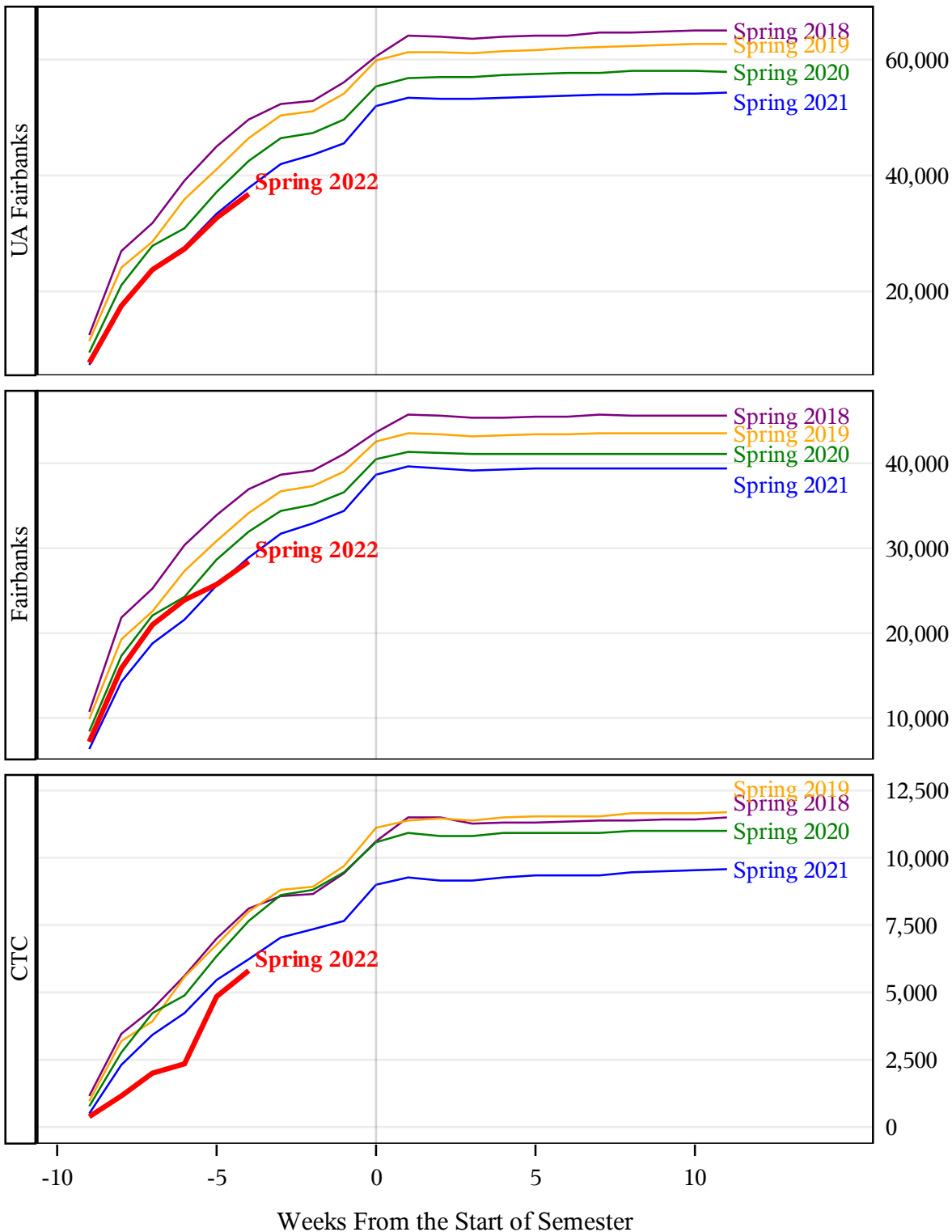
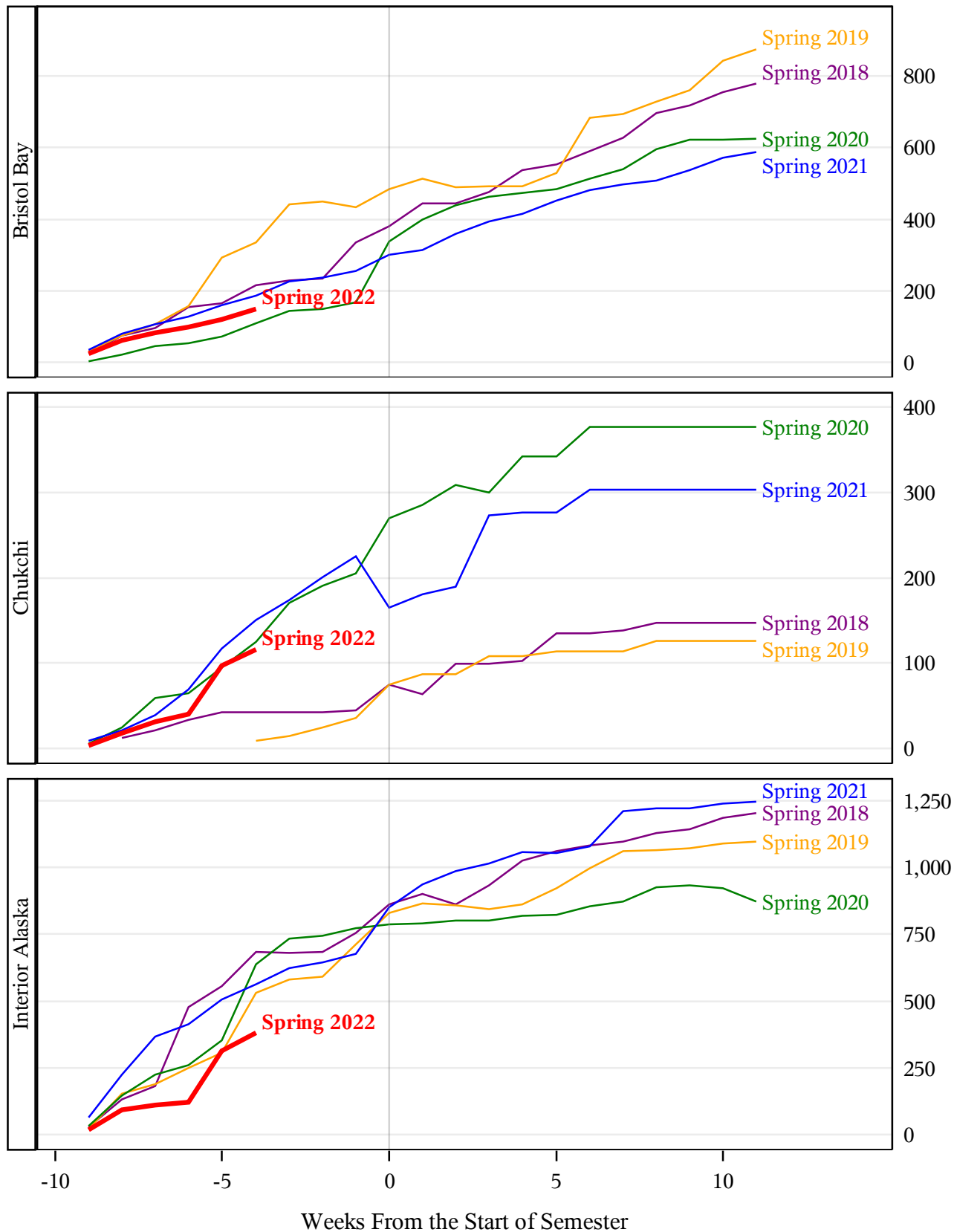


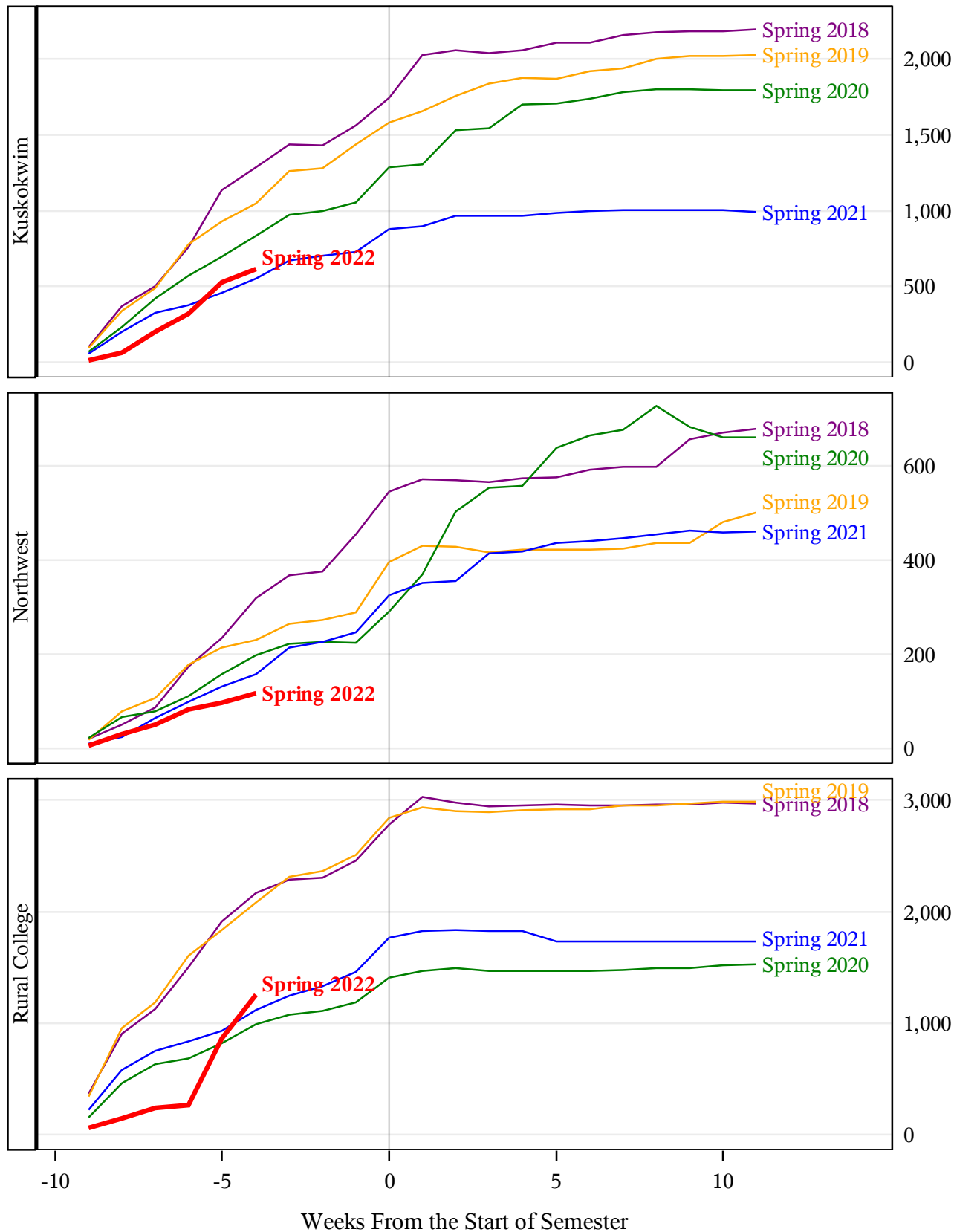
**University of Alaska Fairbanks - Early Semester Report
 Student Credit Hours Generated by Registration Week
 Spring 2018 - Spring 2022**



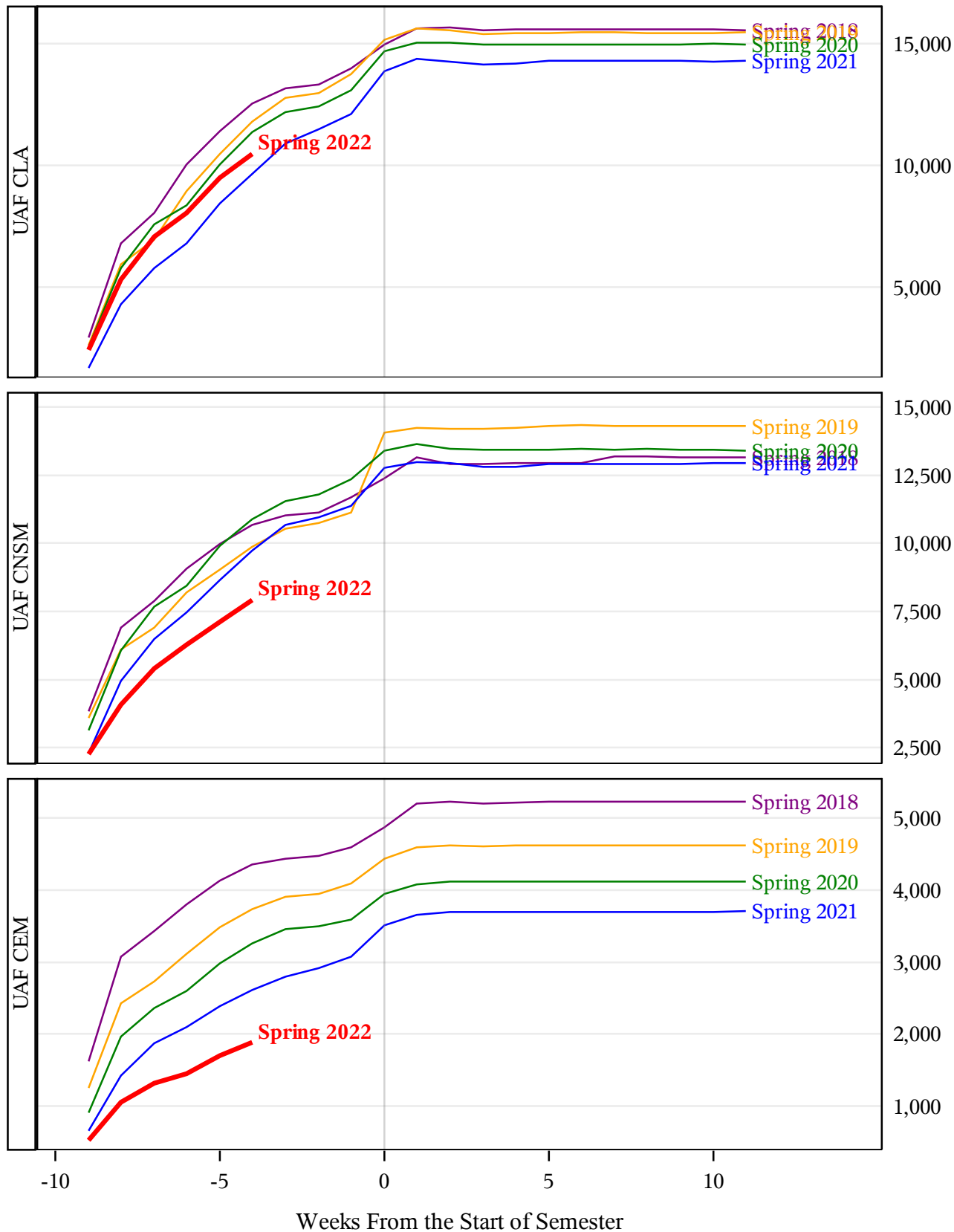
**University of Alaska Fairbanks - Early Semester Report
 Student Credit Hours Generated by Registration Week
 Spring 2018 - Spring 2022**



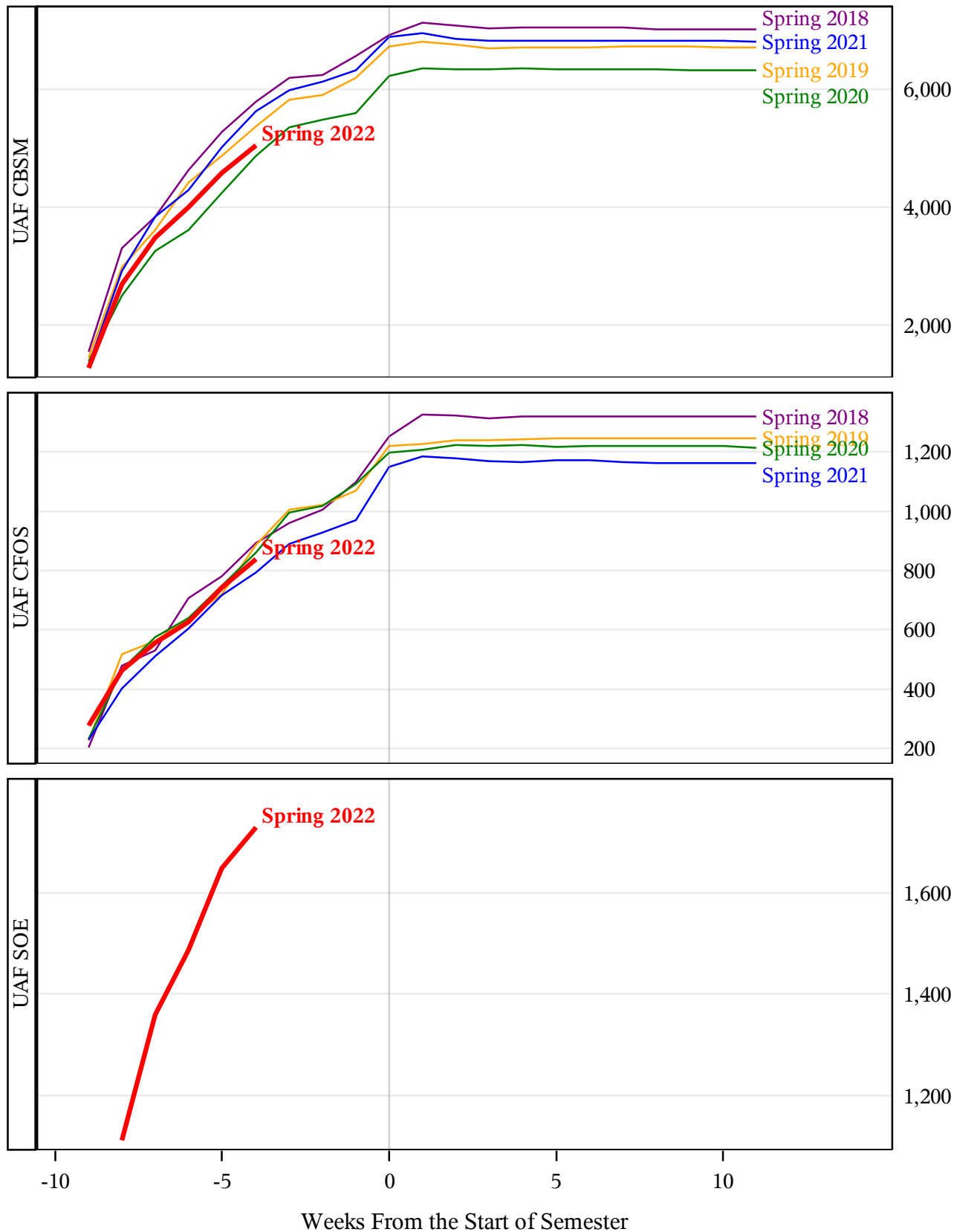
**University of Alaska Fairbanks - Early Semester Report
 Student Credit Hours Generated by Registration Week
 Spring 2018 - Spring 2022**



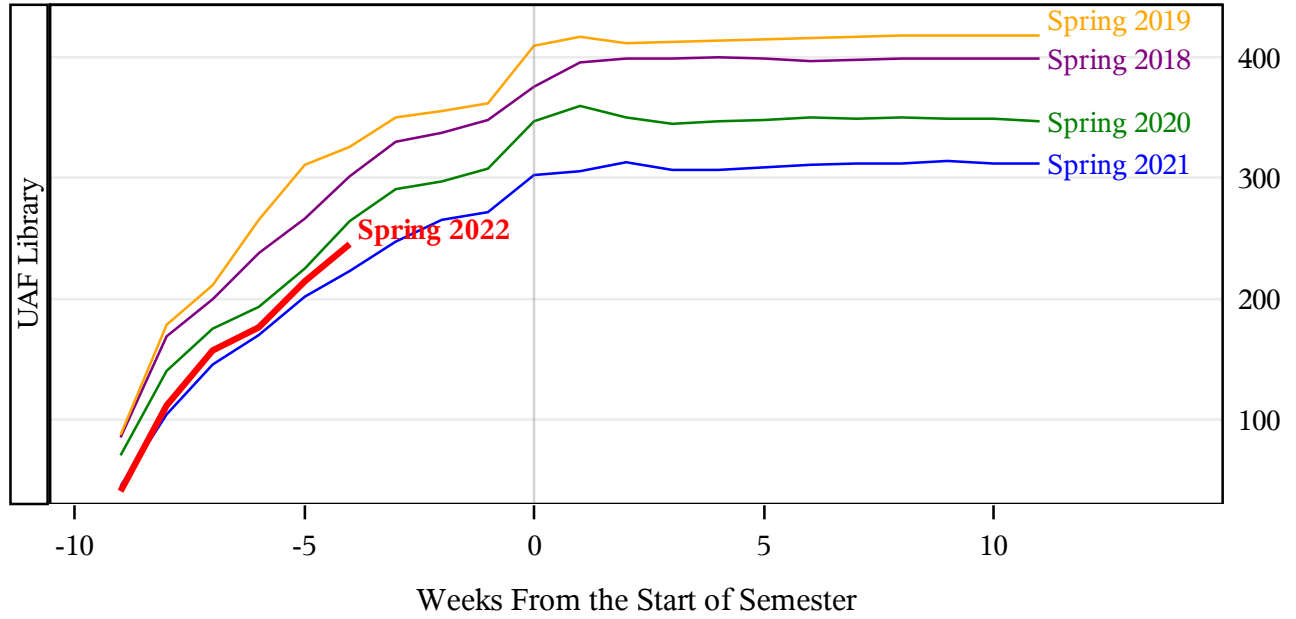
**University of Alaska Fairbanks - Early Semester Report
 Student Credit Hours Generated by Registration Week
 Spring 2018 - Spring 2022**



**University of Alaska Fairbanks - Early Semester Report
 Student Credit Hours Generated by Registration Week
 Spring 2018 - Spring 2022**



*University of Alaska Fairbanks - Early Semester Report
Student Credit Hours Generated by Registration Week
Spring 2018 - Spring 2022*



***University of Alaska Fairbanks - Early Semester Report
Student Credit Hours Generated by Registration Week
Spring 2018 - Spring 2022***

Note: The implementation of CourseLeaf Section Scheduler as of spring 2022 registration has caused significant changes to business processes for how eCampus courses are associated with each UAF campus. In turn, all eCampus enrollment activity is currently being reported under Fairbanks Campus, rather than reallocated proportionally to the specific locations where the courses are being delivered.

Therefore, Fairbanks Campus enrollment headcount and student credit hours are increased, while CRCD and CTC counts are lower than expected. The UA Data Warehouse Team is working to update reporting processes as needed, which will hopefully be implemented in December, at which time UAF enrollment headcounts and student credit hours will redistribute accordingly.