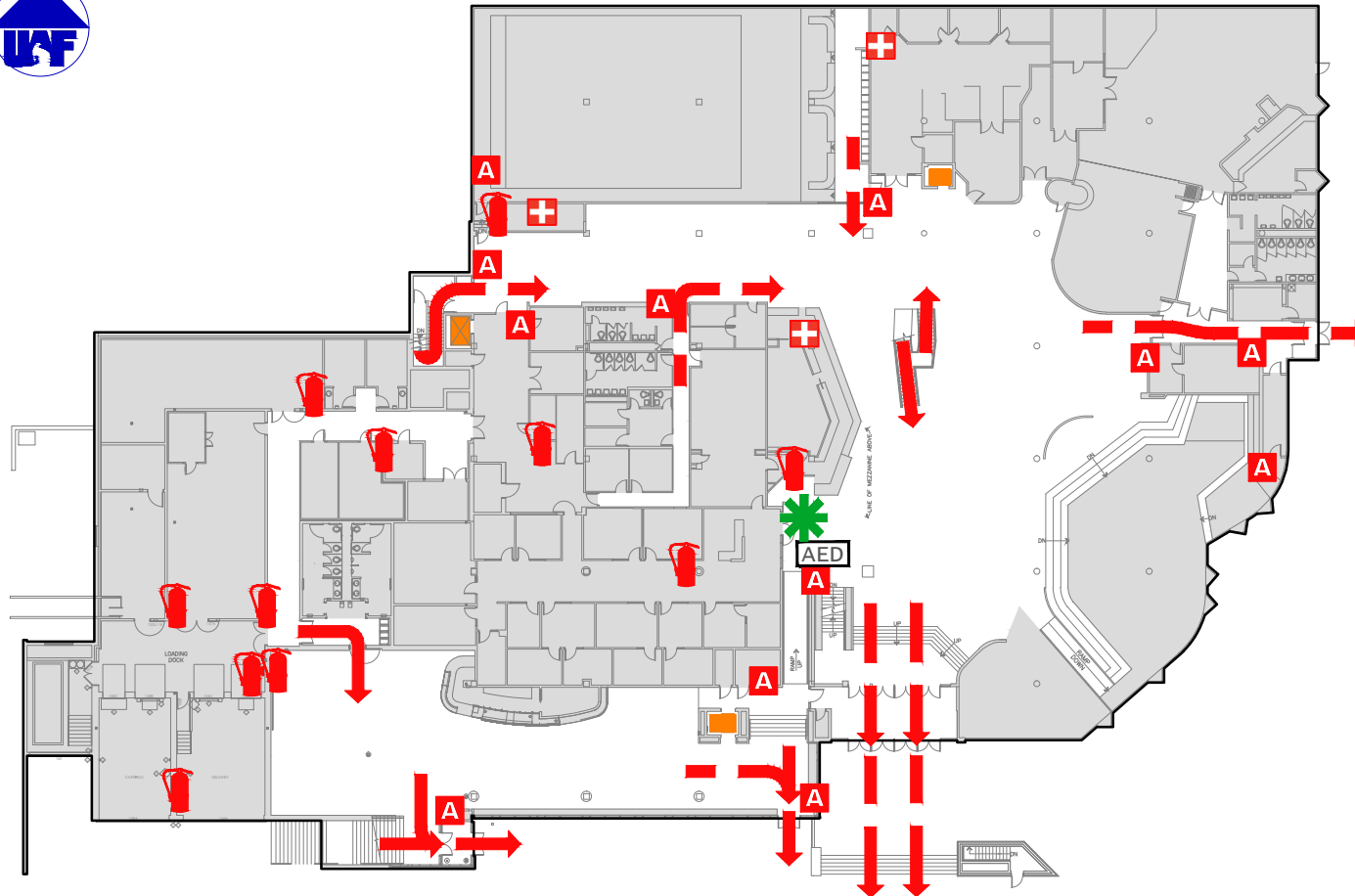


EVACUATION PLAN

WOOD CENTER, FS505

FLOOR 1

CALL 911



**FIRE
POLICE
MEDICAL**

IN CASE OF FIRE, PULL
FIRE ALARM, USE EXIT
STAIRS, CLOSE ALL
WINDOWS AND DOORS,
DO NOT USE ELEVATOR.



FIRE ALARM WILL SOUND AS
CHIRPING ELECTRICAL HORN,
STROBE LIGHT WILL FLASH.

**PERSONS
WITH
DISABILITIES**

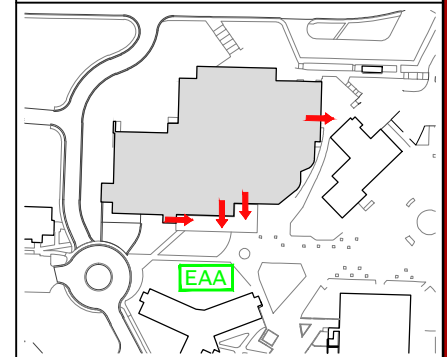
CALL 911, REPORT
YOUR LOCATION,
PROCEED TO THE
NEAREST EXIT OR EXIT
STAIRWELL AND
AWAIT ASSISTANCE.



SYMBOL LEGEND

- | | | | | | |
|--|-----------------------|--|------------------------------------|--|--------------|
| | EMERGENCY EGRESS PATH | | EMERGENCY ASSEMBLY AREA | | ELEVATOR |
| | FIRE EXTINGUISHER | | STAIRS | | FIRST AID |
| | ALARM PULL STATION | | AUTOMATED ELECTRONIC DEFIBRILLATOR | | YOU ARE HERE |

EVACUATION SITE



LAST REVISION: DECEMBER 2016
FOR REVISIONS OR COPIES CONTACT DDC DRAFTING AT UAF-DDC-CADD@ALASKA.EDU