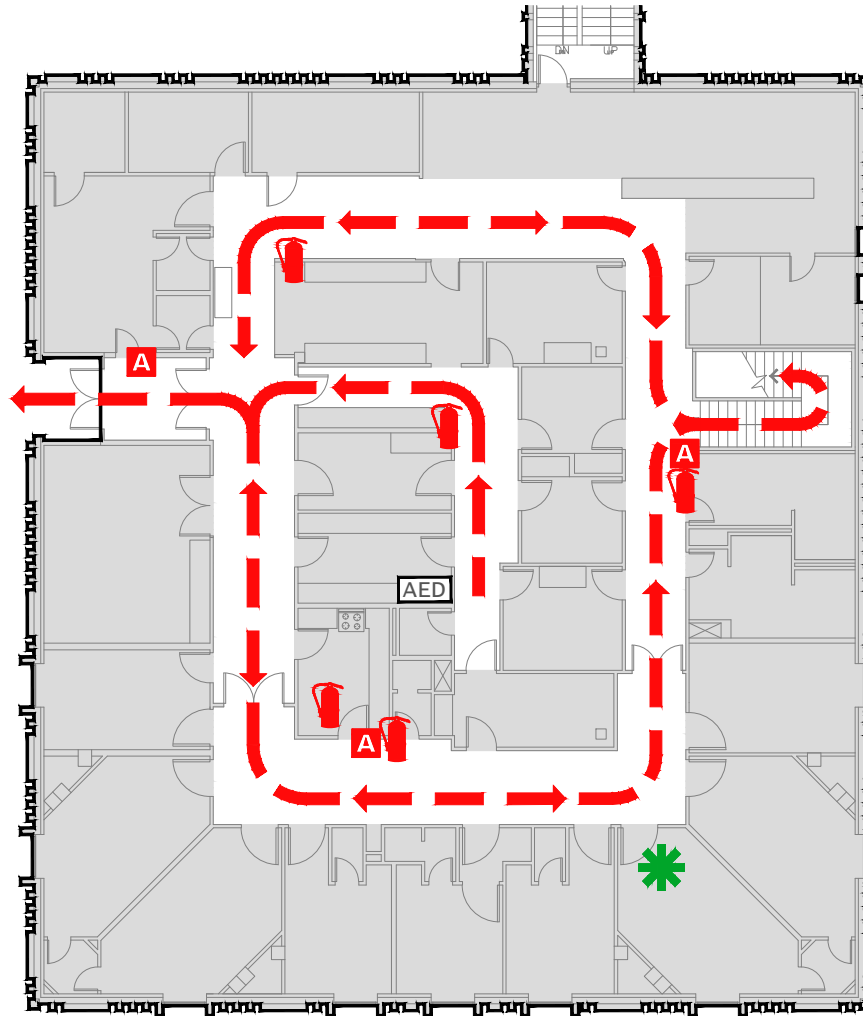


# WHITAKER BUILDING II EVACUATION PLAN

FS612  
FLOOR 2



**CALL 911**

**FIRE/POLICE/MEDICAL**

IN CASE OF FIRE, PULL FIRE ALARM, USE EXIT STAIRS, CLOSE ALL WINDOWS AND DOORS, DO NOT USE ELEVATOR.



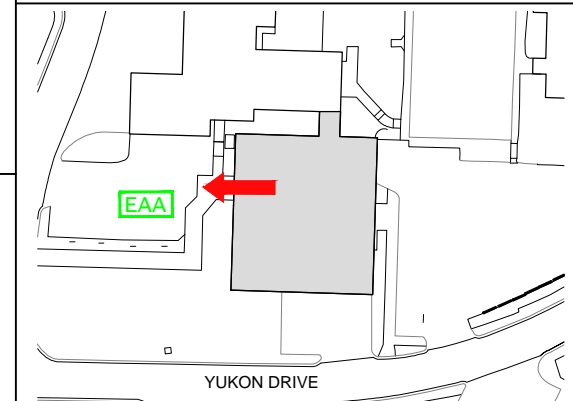
FIRE ALARM WILL SOUND AS CHIRPING ELECTRICAL HORN, STROBE LIGHT WILL FLASH.

**PERSONS WITH DISABILITIES**



CALL 911, REPORT YOUR LOCATION, PROCEED TO THE NEAREST EXIT OR EXIT STAIRWELL AND AWAIT ASSISTANCE.

**EVACUATION SITE**



## SYMBOL LEGEND

- EMERGENCY EGRESS PATH
- EMERGENCY ASSEMBLY AREA
- FIRE EXTINGUISHER
- ALARM PULL STATION
- YOU ARE HERE
- STAIRS
- AUTOMATED ELECTRONIC DEFIBRILLATOR

LAST REVISION: 29 JUNE 2016

FOR REVISIONS OR COPIES CONTACT DDC DRAFTING AT UAF-DDC-CADD@ALASKA.EDU