

# WHITAKER BUILDING II EVACUATION PLAN

FS612  
FLOOR 2

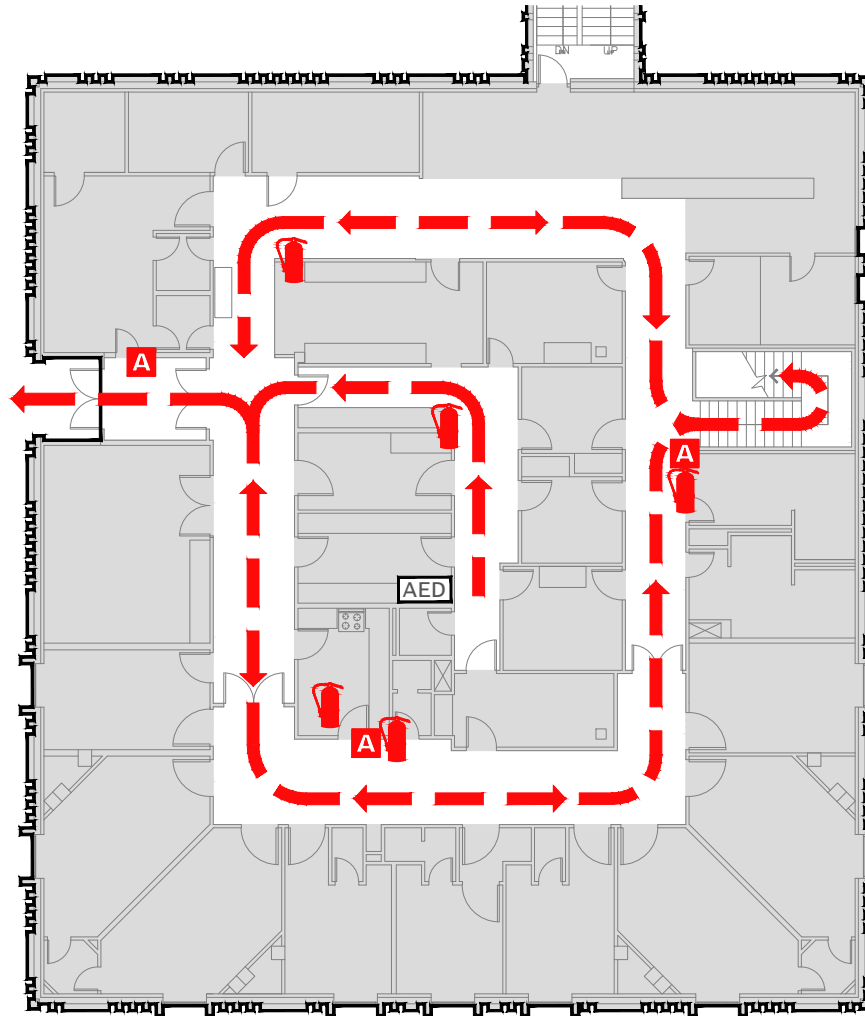
**CALL 911**

**FIRE/POLICE/MEDICAL**

IN CASE OF FIRE, PULL FIRE ALARM, USE EXIT STAIRS, CLOSE ALL WINDOWS AND DOORS, DO NOT USE ELEVATOR.



FIRE ALARM WILL SOUND AS CHIRPING ELECTRICAL HORN, STROBE LIGHT WILL FLASH.

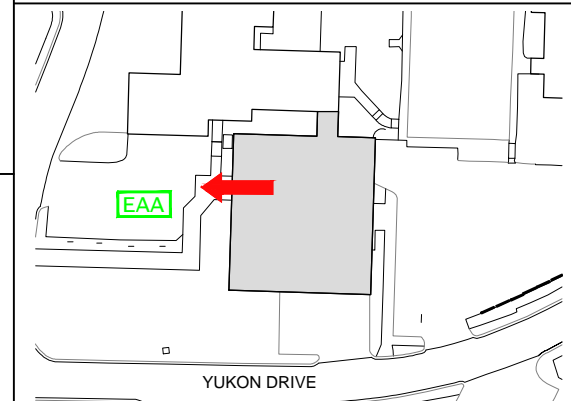


**PERSONS  
WITH  
DISABILITIES**



CALL 911, REPORT YOUR LOCATION, PROCEED TO THE NEAREST EXIT OR EXIT STAIRWELL AND AWAIT ASSISTANCE.

## EVACUATION SITE



## SYMBOL LEGEND

- |  |                                    |  |                   |  |                    |
|--|------------------------------------|--|-------------------|--|--------------------|
|  | EMERGENCY EGRESS PATH              |  | FIRE EXTINGUISHER |  | ALARM PULL STATION |
|  | EMERGENCY ASSEMBLY AREA            |  | STAIRS            |  | YOU ARE HERE       |
|  | AUTOMATED ELECTRONIC DEFIBRILLATOR |  |                   |  |                    |