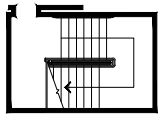


# WEST RIDGE RESEARCH BUILDING EVACUATION PLAN

# FS909 FLOOR 3

## SYMBOL LEGEND



EXIT STAIR



EMERGENCY EGRESS PATH



FIRE EXTINGUISHER



ALARM PULL STATION



AUTOMATED ELECTRONIC DEFIBRILLATOR



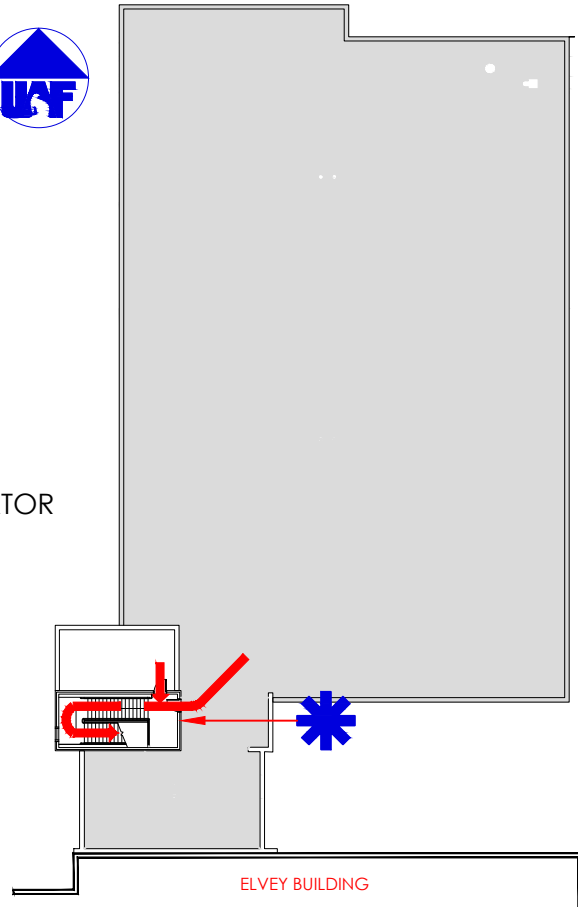
ELEVATOR



AREA OF REFUGE



YOU ARE HERE



## CALL 911 FIRE/POLICE/MEDICAL



IN CASE OF EMERGENCY, PULL FIRE ALARM, USE EXIT STAIRS, CLOSE ALL WINDOWS AND DOORS, DO NOT USE ELEVATOR

ALARM WILL SOUND AS WHOOPING ELECTRICAL HORN, STROBE LIGHT WILL FLASH, PUBLIC ADDRESS SYSTEM WILL BE USED FOR ANNOUNCEMENTS. LISTEN FOR INSTRUCTIONS.

## PERSONS WITH DISABILITIES



SHALL CALL 911, REPORT THEIR LOCATION, PROCEED TO THE NEAREST EXIT STAIRWELL AND AWAIT ASSISTANCE.