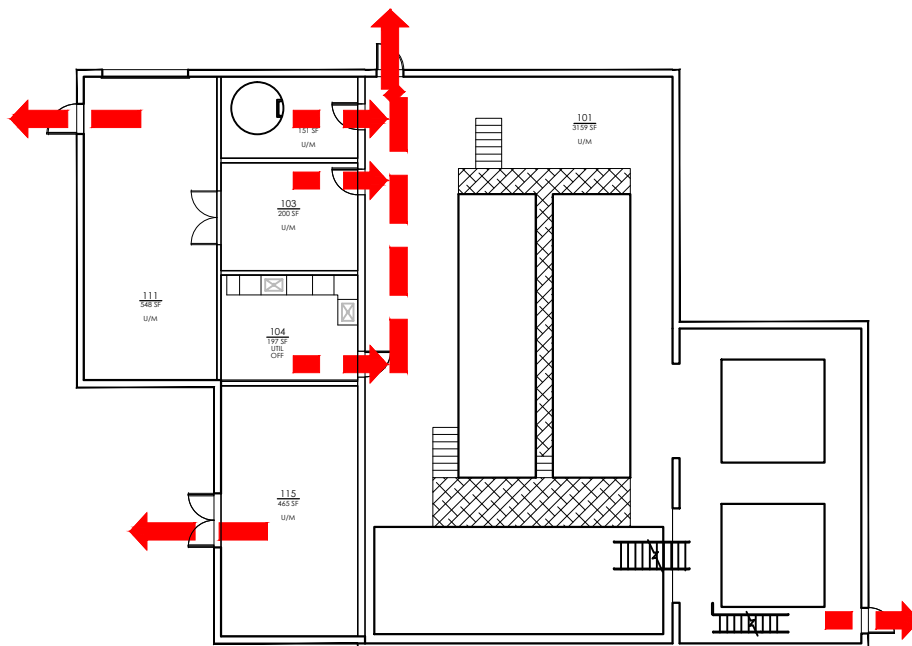


# WATER TREATMENT NO. 2 EVACUATION PLAN

# FS808 FLOOR 1



## SYMBOL LEGEND



EMERGENCY EGRESS PATH



AUTOMATED ELECTRONIC  
DEFIBRILLATOR



FIRE EXTINGUISHER



YOU ARE HERE



ALARM PULL STATION

## CALL 911 FIRE/POLICE/MEDICAL



IN CASE OF FIRE, PULL FIRE ALARM, USE EXIT STAIRS, CLOSE ALL WINDOWS AND DOORS, DO NOT USE ELEVATOR

ALARM WILL SOUND AS WHOOPING ELECTRICAL HORN, STROBE LIGHT WILL FLASH, PUBLIC ADDRESS SYSTEM WILL BE USED FOR ANNOUNCEMENTS. LISTEN FOR INSTRUCTIONS.

## PERSONS WITH DISABILITIES



SHALL CALL 911, REPORT THEIR LOCATION, PROCEED TO THE NEAREST EXIT STAIRWELL AND AWAIT ASSISTANCE.