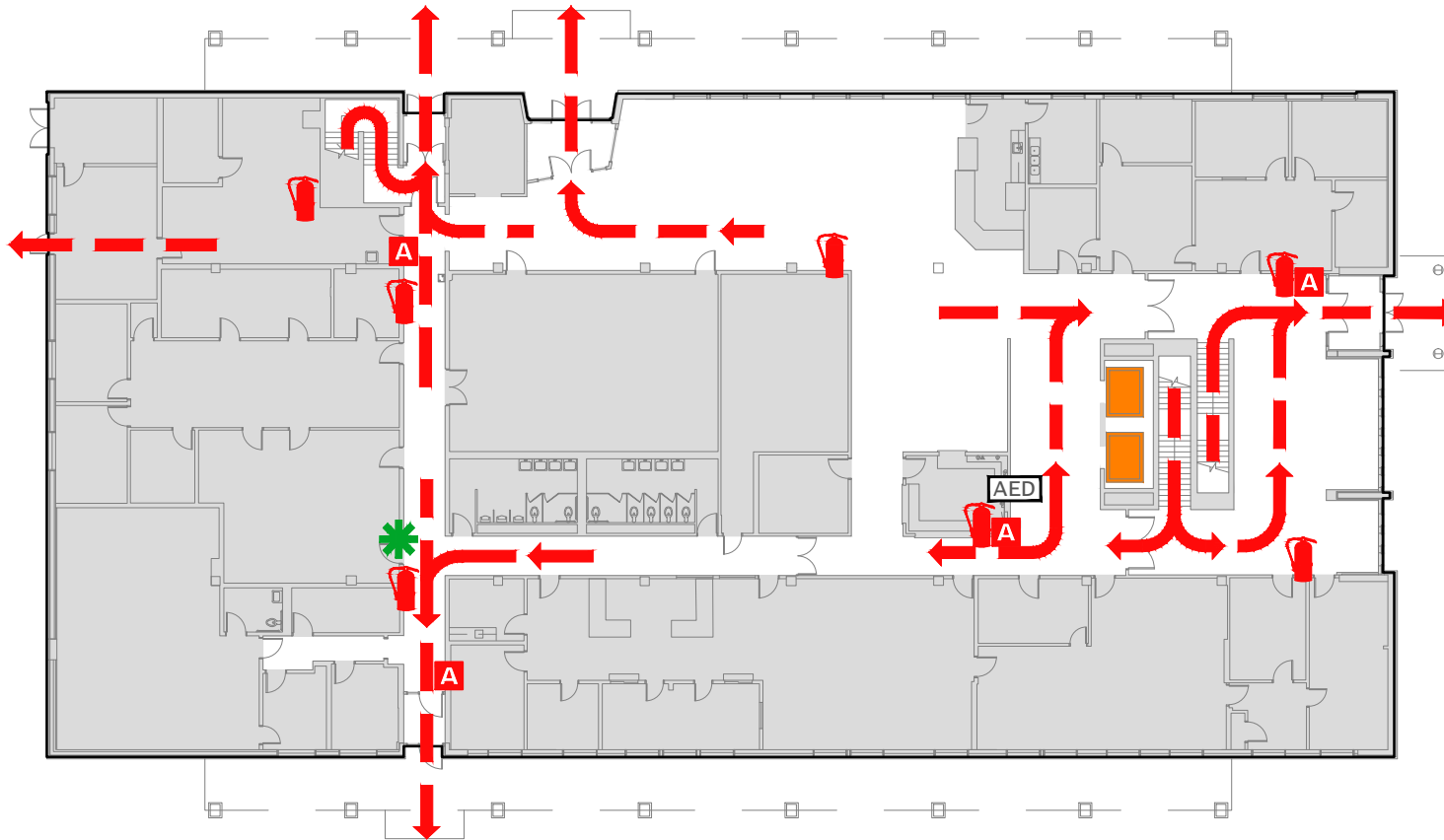




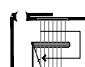





# EVACUATION PLAN

UAF COMMUNITY & TECHNICAL COLLEGE  
TV655  
FLOOR 1



## SYMBOL LEGEND

- |   |                       |   |              |   |                                    |
|---|-----------------------|---|--------------|---|------------------------------------|
|  | EMERGENCY EGRESS PATH |  | ELEVATOR     |  | EMERGENCY ASSEMBLY AREA            |
|  | FIRE EXTINGUISHER     |  | STAIRS       |  | AUTOMATED ELECTRONIC DEFIBRILLATOR |
|  | ALARM PULL STATION    |  | YOU ARE HERE |   |                                    |



**CALL 911**

FIRE  
POLICE  
MEDICAL

IN CASE OF FIRE, PULL  
FIRE ALARM, USE EXIT  
STAIRS, CLOSE ALL  
WINDOWS AND DOORS,  
DO NOT USE ELEVATOR.



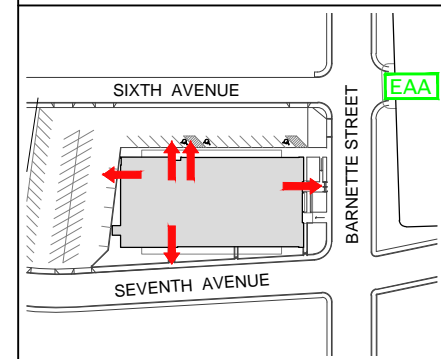
FIRE ALARM WILL SOUND AS  
CHIRPING ELECTRICAL HORN,  
STROBE LIGHT WILL FLASH.

**PERSONS  
WITH  
DISABILITIES**

CALL 911, REPORT  
YOUR LOCATION,  
PROCEED TO THE  
NEAREST EXIT OR EXIT  
STAIRWELL AND  
AWAIT ASSISTANCE.



**EVACUATION SITE**



LAST REVISION: SEPTEMBER 2016

FOR REVISIONS OR COPIES CONTACT DDC DRAFTING AT UAF-DDC-CADD@ALASKA.EDU