

EVACUATION PLAN

SALISBURY THEATRE, FS311

FLOOR 3



CALL 911

**FIRE
POLICE
MEDICAL**

IN CASE OF FIRE, PULL
FIRE ALARM, USE EXIT
STAIRS, CLOSE ALL
WINDOWS AND DOORS,
DO NOT USE ELEVATOR.



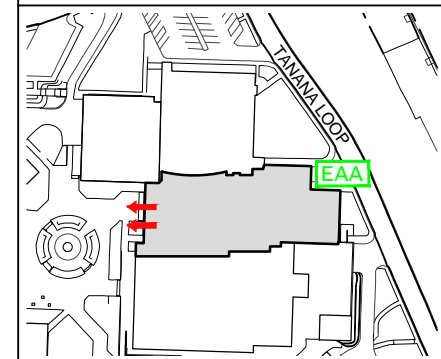
FIRE ALARM WILL SOUND AS
CHIRPING ELECTRICAL HORN,
STROBE LIGHT WILL FLASH.

**PERSONS
WITH
DISABILITIES**

CALL 911, REPORT
YOUR LOCATION,
PROCEED TO THE
NEAREST EXIT OR EXIT
STAIRWELL AND
AWAIT ASSISTANCE.

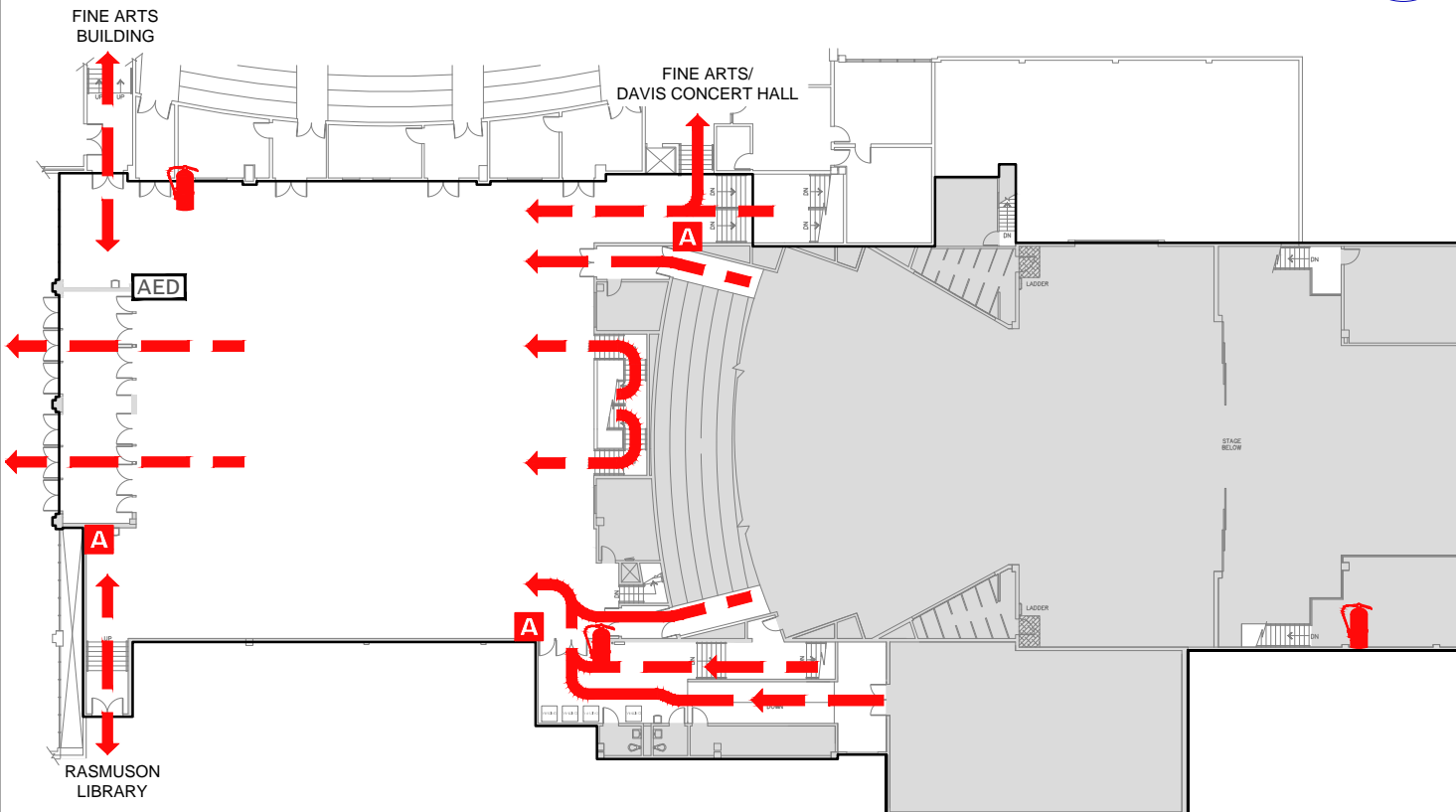


EVACUATION SITE



LAST REVISION: AUGUST 2016

FOR REVISIONS OR COPIES CONTACT DDC DRAFTING AT UAF-DDC-CADD@ALASKA.EDU



SYMBOL LEGEND

EMERGENCY EGRESS PATH

AUTOMATED ELECTRONIC DEFIBRILLATOR

EMERGENCY ASSEMBLY AREA

FIRE EXTINGUISHER

ALARM PULL STATION

STAIRS

YOU ARE HERE

FINE ARTS BUILDING

FINE ARTS/
DAVIS CONCERT HALL

AED

A

RASMUSON LIBRARY

A

STAGE BELOW

LADDER

LADDER