

EVACUATION PLAN

REICHARDT BUILDING, FS900

FLOOR 1



CALL 911

**FIRE
POLICE
MEDICAL**

IN CASE OF FIRE, PULL
FIRE ALARM, USE EXIT
STAIRS, CLOSE ALL
WINDOWS AND DOORS,
DO NOT USE ELEVATOR.



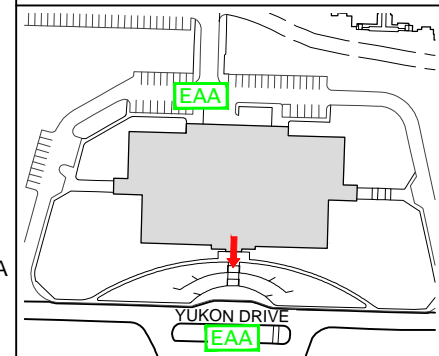
FIRE ALARM WILL SOUND AS
CHIRPING ELECTRICAL HORN,
STROBE LIGHT WILL FLASH.

**PERSONS
WITH
DISABILITIES**

CALL 911, REPORT
YOUR LOCATION,
PROCEED TO THE
NEAREST EXIT OR EXIT
STAIRWELL AND
AWAIT ASSISTANCE.

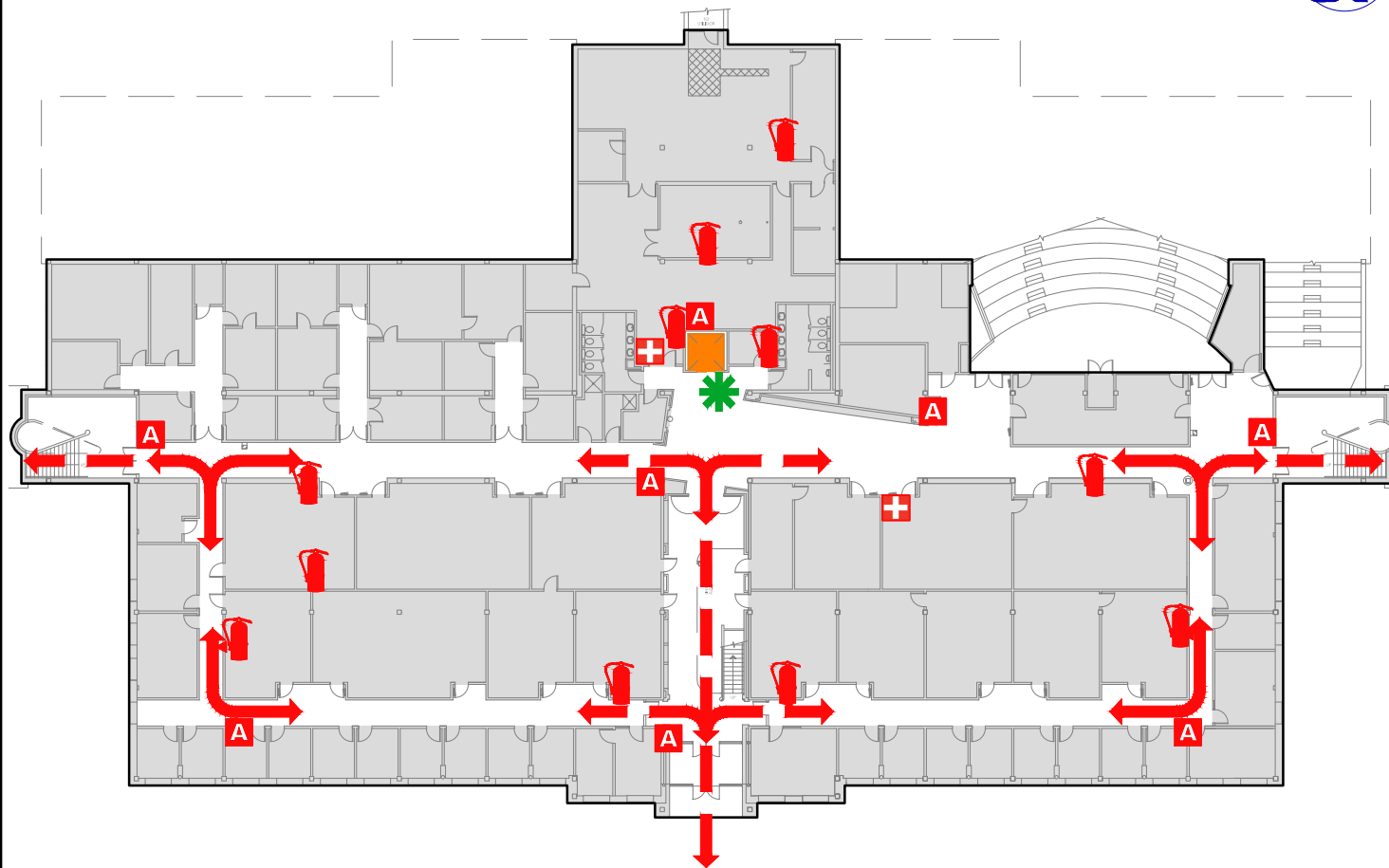


EVACUATION SITE



LAST REVISION: SEPTEMBER 2016

FOR REVISIONS OR COPIES CONTACT DDC DRAFTING AT UAF-DDC-CADD@ALASKA.EDU



SYMBOL LEGEND

EMERGENCY EGRESS PATH



ELEVATOR



FIRST AID



EMERGENCY ASSEMBLY AREA



FIRE EXTINGUISHER



STAIRS



ALARM PULL STATION



YOU ARE HERE

FOR REVISIONS OR COPIES CONTACT DDC DRAFTING AT UAF-DDC-CADD@ALASKA.EDU