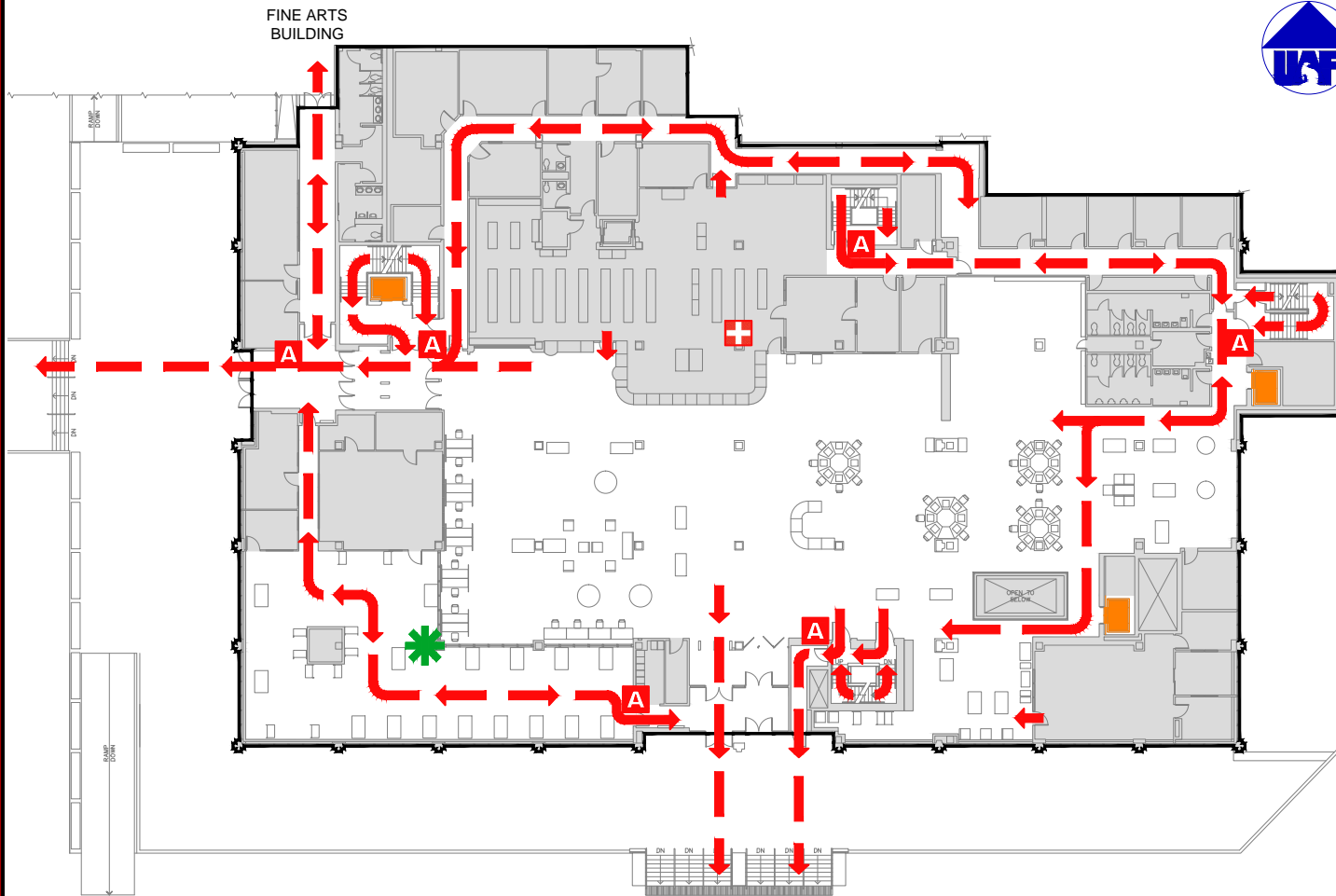


# EVACUATION PLAN

RASMUSON LIBRARY, FS310

FLOOR 4

**CALL 911**



**FIRE  
POLICE  
MEDICAL**

IN CASE OF FIRE, PULL  
FIRE ALARM, USE EXIT  
STAIRS, CLOSE ALL  
WINDOWS AND DOORS,  
DO NOT USE ELEVATOR.



FIRE ALARM WILL SOUND AS  
CHIRPING ELECTRICAL HORN,  
STROBE LIGHT WILL FLASH.

**PERSONS  
WITH  
DISABILITIES**

CALL 911, REPORT  
YOUR LOCATION,  
PROCEED TO THE  
NEAREST EXIT OR EXIT  
STAIRWELL AND  
AWAIT ASSISTANCE.



## SYMBOL LEGEND

- EMERGENCY EGRESS PATH
- ELEVATOR
- STAIRS
- YOU ARE HERE
- EMERGENCY ASSEMBLY AREA
- ALARM PULL STATION
- FIRST AID

## EVACUATION SITE

