

EVACUATION PLAN

NERLAND HALL, FS406

FLOOR 1



CALL 911

**FIRE
POLICE
MEDICAL**

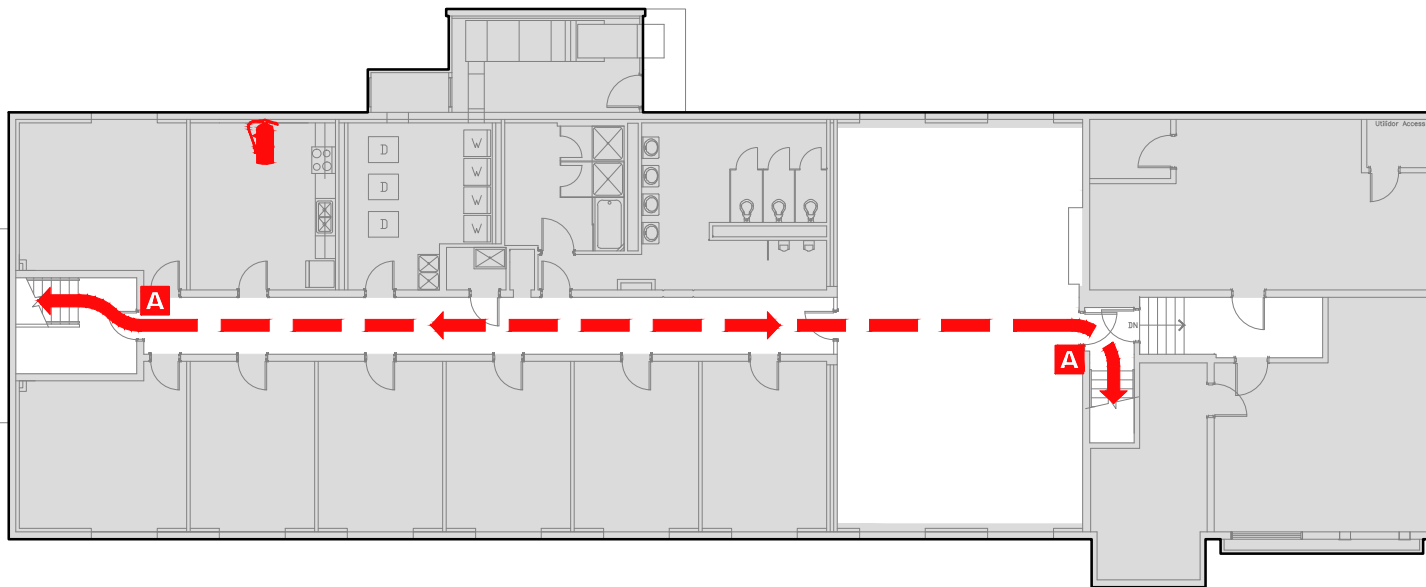
IN CASE OF FIRE, PULL
FIRE ALARM, USE EXIT
STAIRS, CLOSE ALL
WINDOWS AND DOORS,
DO NOT USE ELEVATOR.



FIRE ALARM WILL SOUND AS
CHIRPING ELECTRICAL HORN,
STROBE LIGHT WILL FLASH.

**PERSONS
WITH
DISABILITIES**

CALL 911, REPORT
YOUR LOCATION,
PROCEED TO THE
NEAREST EXIT OR EXIT
STAIRWELL AND
AWAIT ASSISTANCE.



SYMBOL LEGEND

EMERGENCY EGRESS PATH

ALARM PULL STATION

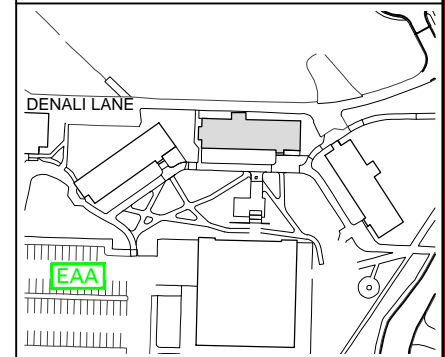
EMERGENCY ASSEMBLY AREA

FIRE EXTINGUISHER

STAIRS

YOU ARE HERE

EVACUATION SITE



LAST REVISION: AUGUST 2016

FOR REVISIONS OR COPIES CONTACT DDC DRAFTING AT UAF-DDC-CADD@ALASKA.EDU