






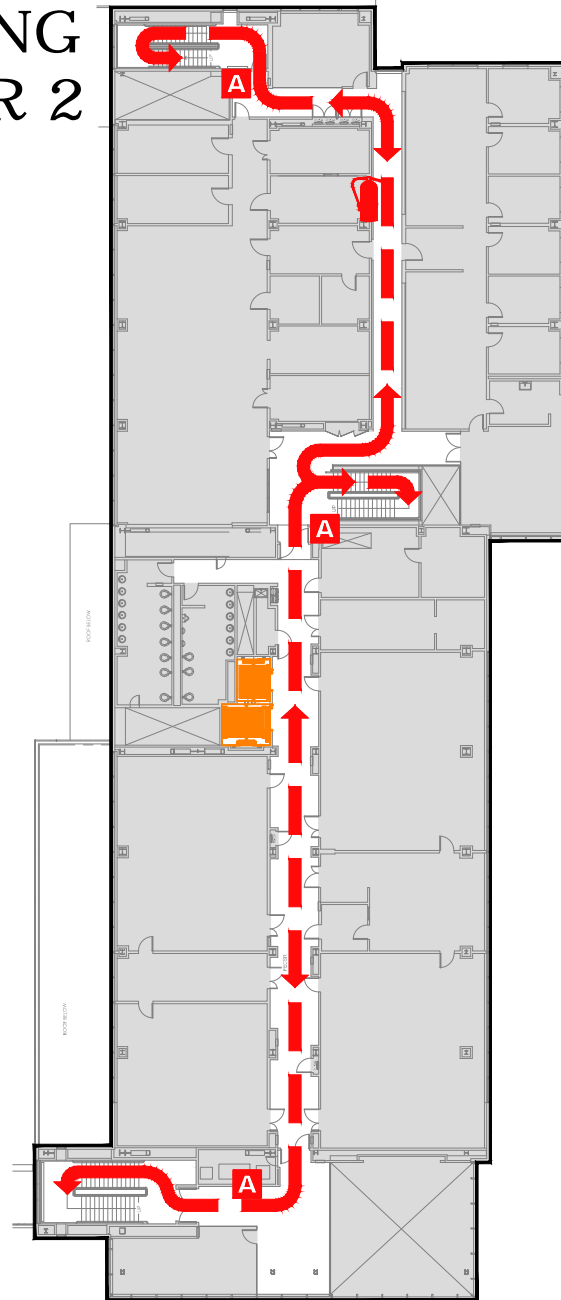


EVACUATION PLAN

MARGARET MURIE BUILDING
FS982
FLOOR 2

SYMBOL LEGEND

-  EMERGENCY EGRESS PATH
-  FIRE EXTINGUISHER
-  ALARM PULL STATION
-  ELEVATOR
-  STAIRS
-  EMERGENCY ASSEMBLY AREA
-  YOU ARE HERE



CALL 911

**FIRE
POLICE
MEDICAL**

IN CASE OF FIRE, PULL
FIRE ALARM, USE EXIT
STAIRS, CLOSE ALL
WINDOWS AND DOORS,
DO NOT USE ELEVATOR.



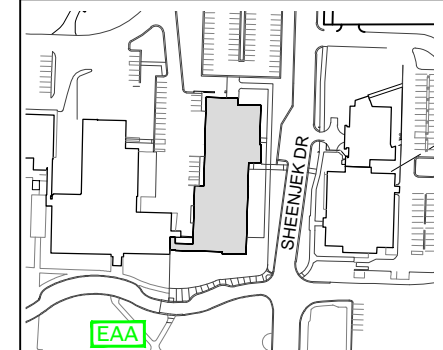
FIRE ALARM WILL SOUND AS
CHIRPING ELECTRICAL HORN,
STROBE LIGHT WILL FLASH.

**PERSONS
WITH
DISABILITIES**

CALL 911, REPORT
YOUR LOCATION,
PROCEED TO THE
NEAREST EXIT OR EXIT
STAIRWELL AND
AWAIT ASSISTANCE.



EVACUATION SITE



LAST REVISION: OCTOBER 2016

FOR REVISIONS OR COPIES CONTACT DDC DRAFTING AT UAF-DDC-CADD@ALASKA.EDU

