

# EVACUATION PLAN

MOORE HALL, FS733

BASEMENT



**CALL 911**

**FIRE  
POLICE  
MEDICAL**

IN CASE OF FIRE, PULL  
FIRE ALARM, USE EXIT  
STAIRS, CLOSE ALL  
WINDOWS AND DOORS,  
DO NOT USE ELEVATOR.



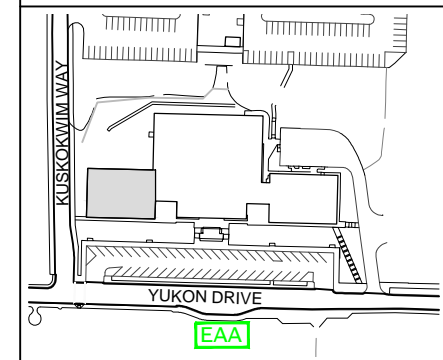
FIRE ALARM WILL SOUND AS  
CHIRPING ELECTRICAL HORN,  
STROBE LIGHT WILL FLASH.

**PERSONS  
WITH  
DISABILITIES**

CALL 911, REPORT  
YOUR LOCATION,  
PROCEED TO THE  
NEAREST EXIT OR EXIT  
STAIRWELL AND  
AWAIT ASSISTANCE.

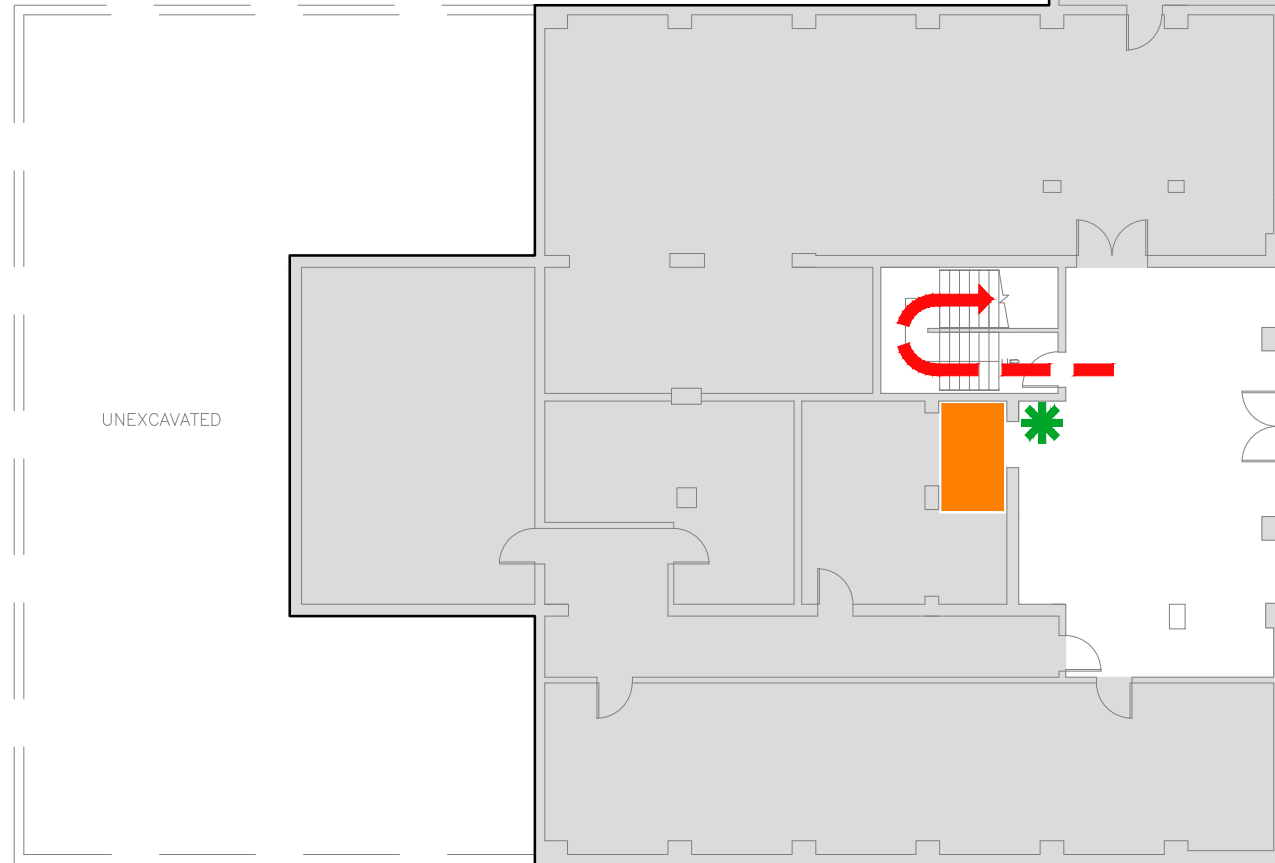


**EVACUATION SITE**



LAST REVISION: AUGUST 2016

FOR REVISIONS OR COPIES CONTACT DDC DRAFTING AT UAF-DDC-CADD@ALASKA.EDU



**SYMBOL LEGEND**

EMERGENCY EGRESS PATH

ELEVATOR

EMERGENCY ASSEMBLY AREA

ALARM PULL STATION

STAIRS

YOU ARE HERE

UNEXCAVATED