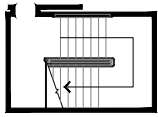


LOLA TILLY BUILDING EVACUATION PLAN

FS411
FLOOR 3

SYMBOL LEGEND



EXIT STAIR



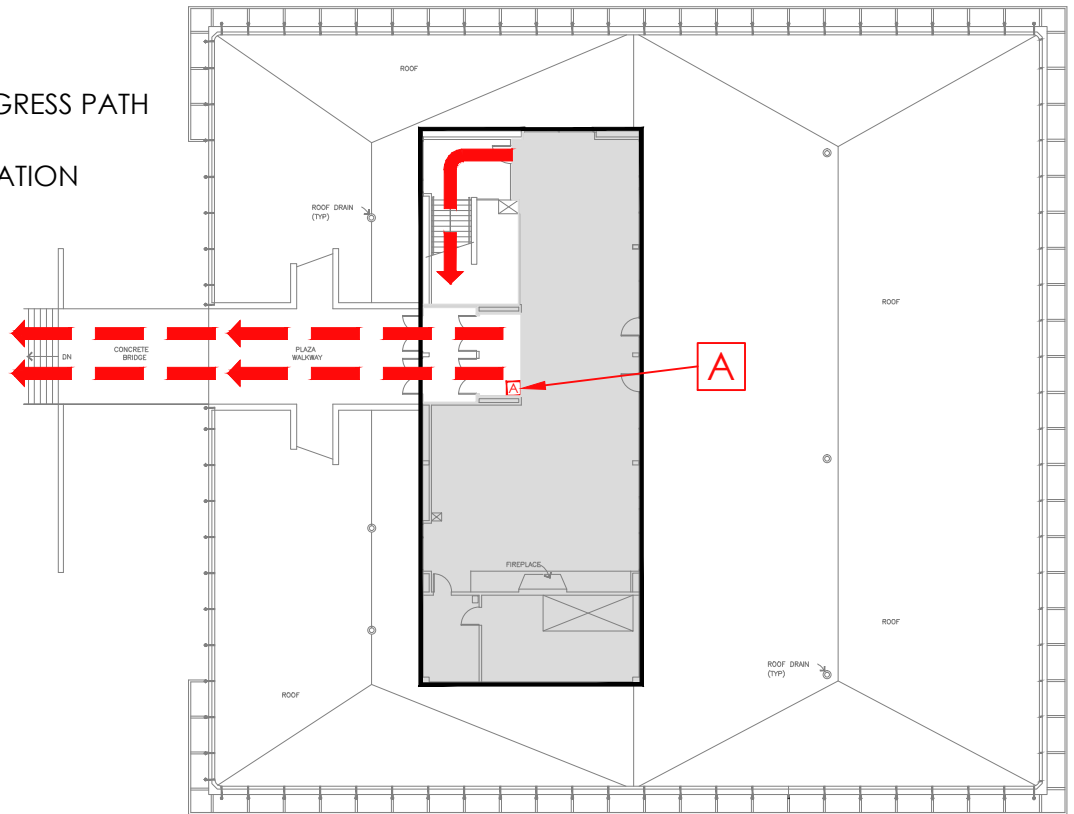
EMERGENCY EGRESS PATH



ALARM PULL STATION



YOU ARE HERE



CALL 911 FIRE/POLICE/MEDICAL



IN CASE OF FIRE, PULL FIRE ALARM, USE EXIT STAIRS, CLOSE ALL WINDOWS AND DOORS, DO NOT USE ELEVATOR

ALARM WILL SOUND AS WHOOPING ELECTRICAL HORN, STROBE LIGHT WILL FLASH, PUBLIC ADDRESS SYSTEM WILL BE USED FOR ANNOUNCEMENTS. LISTEN FOR INSTRUCTIONS.

PERSONS WITH DISABILITIES



SHALL CALL 911, REPORT YOUR LOCATION, PROCEED TO THE NEAREST EXIT STAIRWELL AND AWAIT ASSISTANCE.