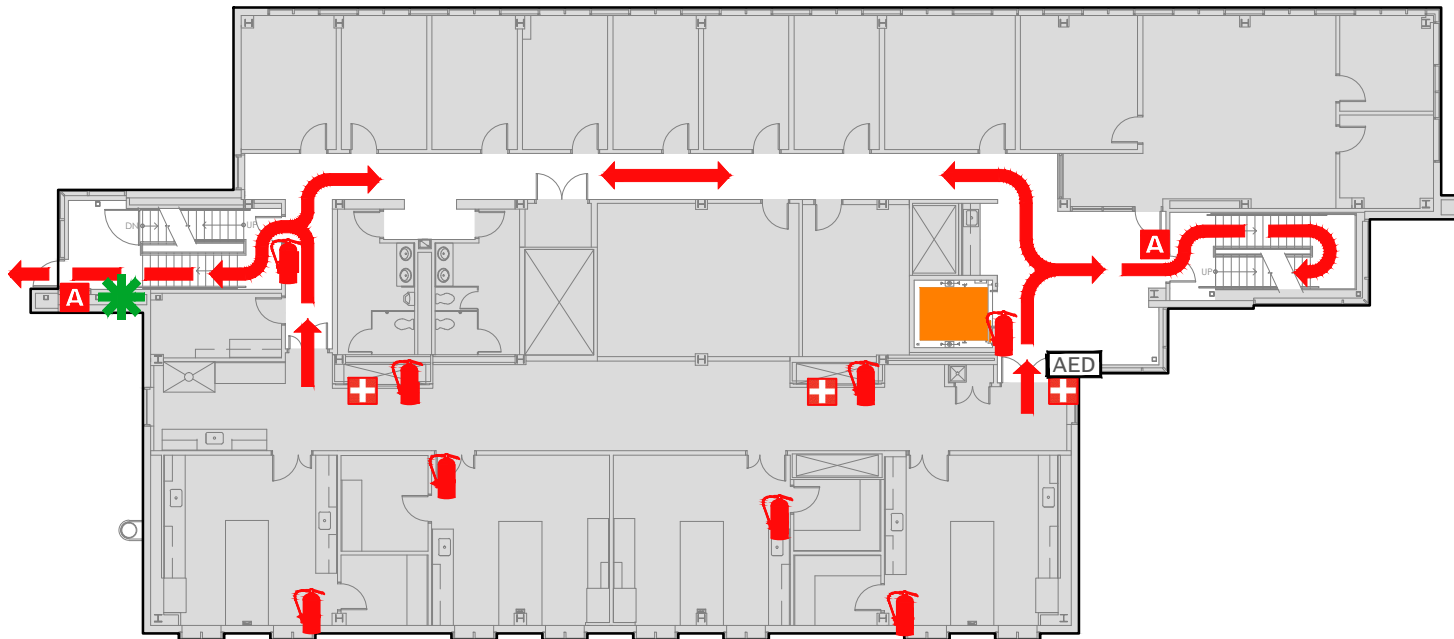


# EVACUATION PLAN

SCHOOL OF FISHERIES & OCEAN SCIENCES  
POINT LENA FACILITY, FS914 FLOOR 2



## SYMBOL LEGEND

EMERGENCY EGRESS PATH

AUTOMATED ELECTRONIC DEFIBRILLATOR

FIRST AID

FIRE EXTINGUISHER

EMERGENCY ASSEMBLY AREA

ELEVATOR

ALARM PULL STATION

STAIRS

YOU ARE HERE

**CALL 911**

FIRE  
POLICE  
MEDICAL

IN CASE OF FIRE, PULL  
FIRE ALARM, USE EXIT  
STAIRS, CLOSE ALL  
WINDOWS AND DOORS,  
DO NOT USE ELEVATOR.



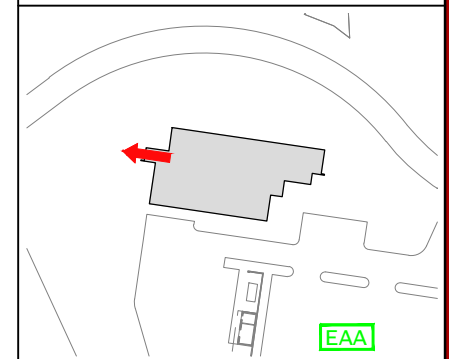
FIRE ALARM WILL SOUND AS  
CHIRPING ELECTRICAL HORN,  
STROBE LIGHT WILL FLASH.

PERSONS  
WITH  
DISABILITIES

CALL 911, REPORT  
YOUR LOCATION,  
PROCEED TO THE  
NEAREST EXIT OR EXIT  
STAIRWELL AND  
AWAIT ASSISTANCE.



EVACUATION SITE



LAST REVISION: JANUARY 2017  
FOR REVISIONS OR COPIES CONTACT DDC DRAFTING AT UAF-DDC-CADD@ALASKA.EDU