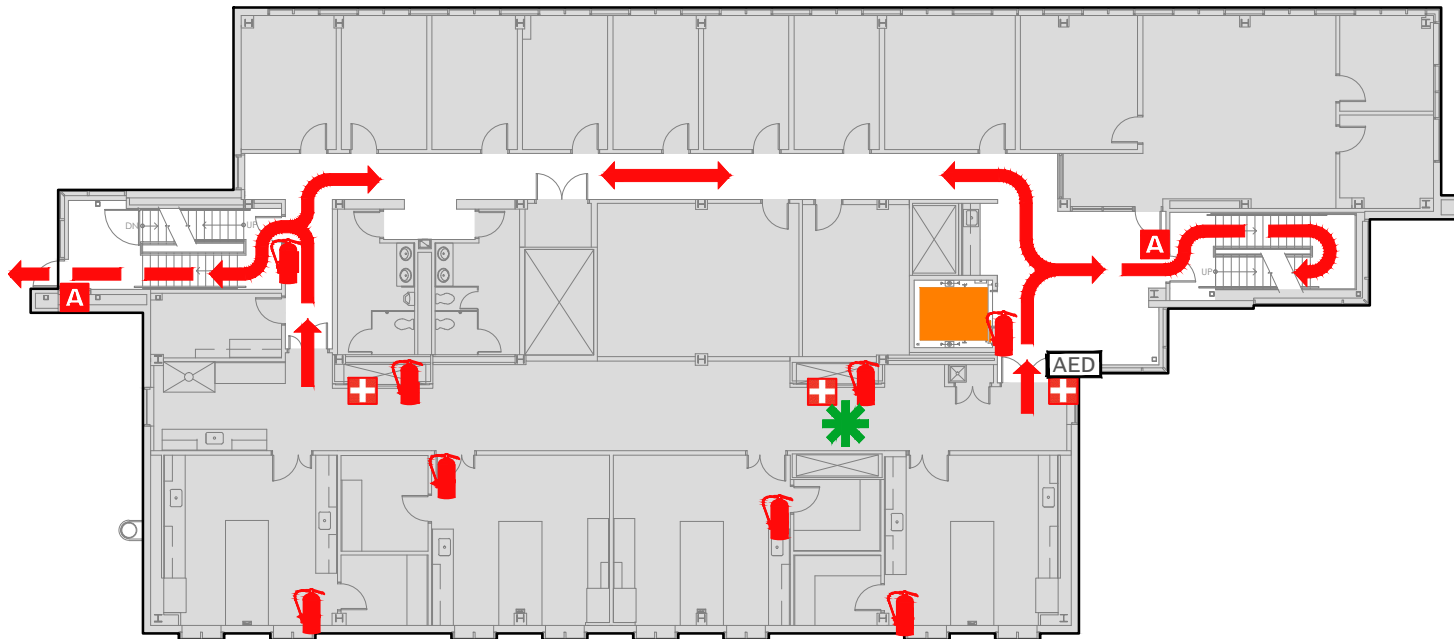


EVACUATION PLAN

SCHOOL OF FISHERIES & OCEAN SCIENCES
POINT LENA FACILITY, FS914 FLOOR 2



SYMBOL LEGEND

EMERGENCY EGRESS PATH

AUTOMATED ELECTRONIC DEFIBRILLATOR

FIRST AID

FIRE EXTINGUISHER

EMERGENCY ASSEMBLY AREA

ELEVATOR

ALARM PULL STATION

STAIRS

YOU ARE HERE

CALL 911

FIRE
POLICE
MEDICAL

IN CASE OF FIRE, PULL
FIRE ALARM, USE EXIT
STAIRS, CLOSE ALL
WINDOWS AND DOORS,
DO NOT USE ELEVATOR.



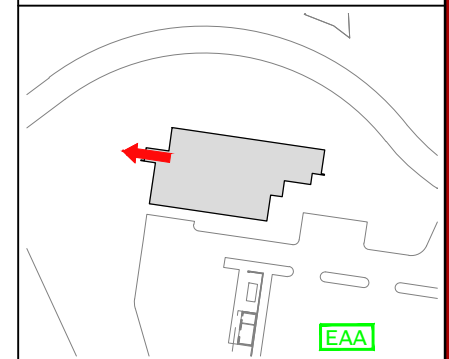
FIRE ALARM WILL SOUND AS
CHIRPING ELECTRICAL HORN,
STROBE LIGHT WILL FLASH.

PERSONS
WITH
DISABILITIES

CALL 911, REPORT
YOUR LOCATION,
PROCEED TO THE
NEAREST EXIT OR EXIT
STAIRWELL AND
AWAIT ASSISTANCE.



EVACUATION SITE



LAST REVISION: JANUARY 2017
FOR REVISIONS OR COPIES CONTACT DDC DRAFTING AT UAF-DDC-CADD@ALASKA.EDU