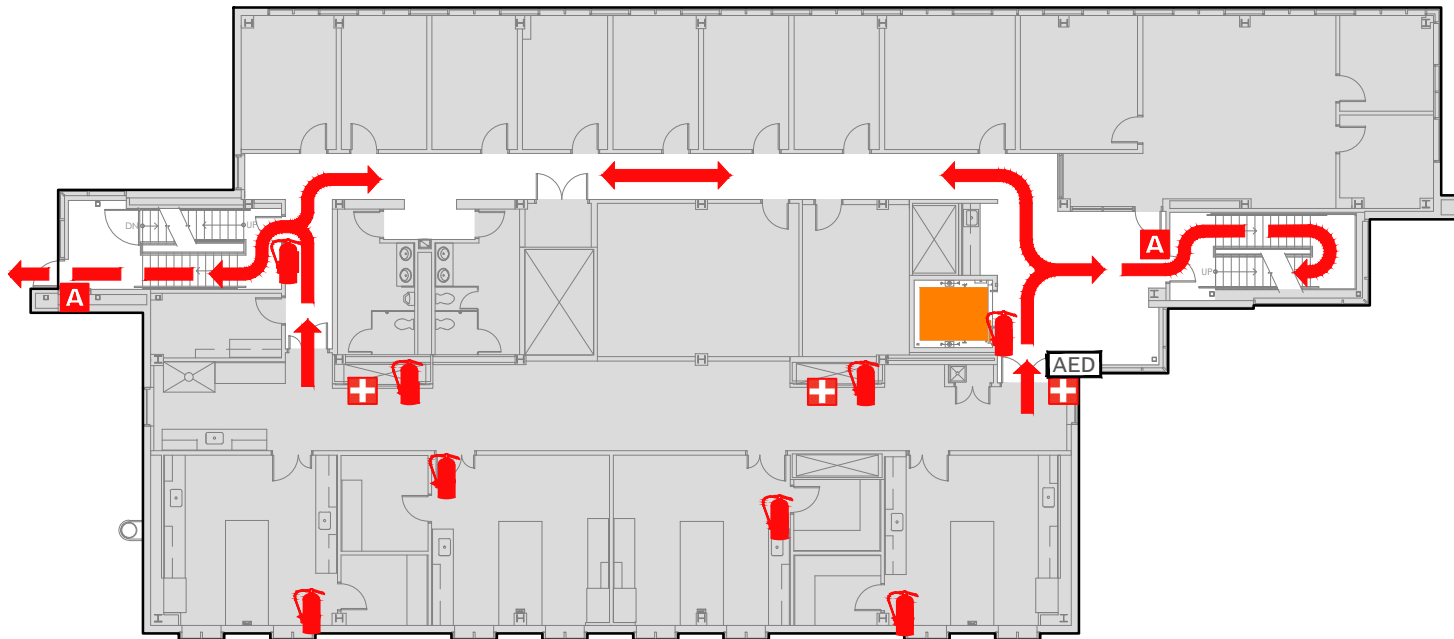


# EVACUATION PLAN

SCHOOL OF FISHERIES & OCEAN SCIENCES  
 POINT LENA FACILITY, FS914 FLOOR 2



## SYMBOL LEGEND

EMERGENCY EGRESS PATH

AUTOMATED ELECTRONIC DEFIBRILLATOR

FIRST AID

FIRE EXTINGUISHER

EMERGENCY ASSEMBLY AREA

ELEVATOR

ALARM PULL STATION

STAIRS

YOU ARE HERE

**CALL 911**

FIRE  
 POLICE  
 MEDICAL

IN CASE OF FIRE, PULL  
 FIRE ALARM, USE EXIT  
 STAIRS, CLOSE ALL  
 WINDOWS AND DOORS,  
 DO NOT USE ELEVATOR.



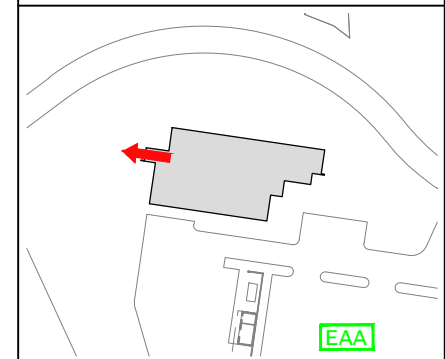
FIRE ALARM WILL SOUND AS  
 CHIRPING ELECTRICAL HORN,  
 STROBE LIGHT WILL FLASH.

PERSONS  
 WITH  
 DISABILITIES

CALL 911, REPORT  
 YOUR LOCATION,  
 PROCEED TO THE  
 NEAREST EXIT OR EXIT  
 STAIRWELL AND  
 AWAIT ASSISTANCE.



EVACUATION SITE



LAST REVISION: JANUARY 2017  
 FOR REVISIONS OR COPIES CONTACT DDC DRAFTING AT UAF-DDC-CADD@ALASKA.EDU