

EVACUATION PLAN

IRVING II BUILDING, FS906

FLOOR 3



CALL 911

**FIRE
POLICE
MEDICAL**

IN CASE OF FIRE, PULL
FIRE ALARM, USE EXIT
STAIRS, CLOSE ALL
WINDOWS AND DOORS,
DO NOT USE ELEVATOR.



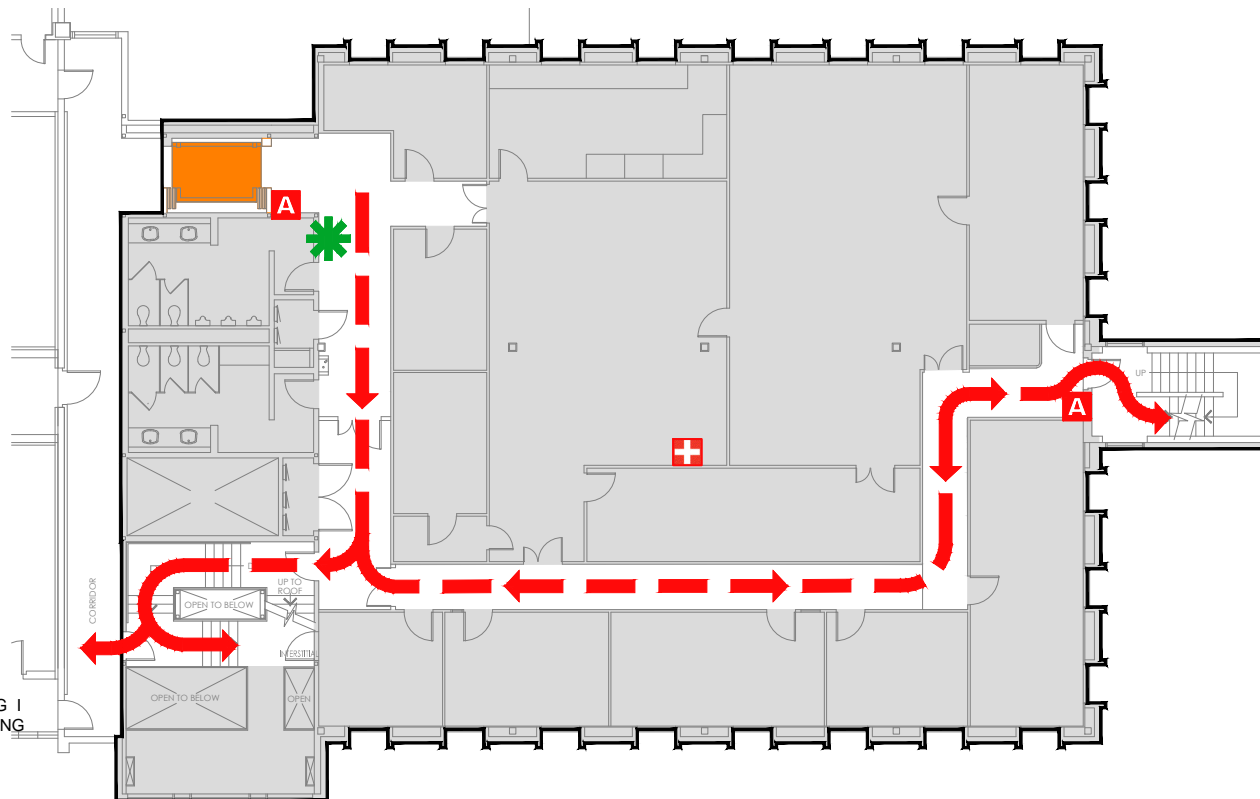
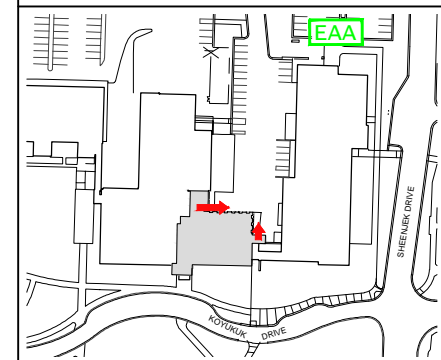
FIRE ALARM WILL SOUND AS
CHIRPING ELECTRICAL HORN,
STROBE LIGHT WILL FLASH.

**PERSONS
WITH
DISABILITIES**

CALL 911, REPORT
YOUR LOCATION,
PROCEED TO THE
NEAREST EXIT OR EXIT
STAIRWELL AND
AWAIT ASSISTANCE.



EVACUATION SITE



SYMBOL LEGEND

EMERGENCY EGRESS PATH

ELEVATOR

EMERGENCY ASSEMBLY AREA

FIRST AID

STAIRS

YOU ARE HERE

ALARM PULL STATION