

EVACUATION PLAN

C.T. ELVEY BUILDING, FS903

FLOOR 2



CALL 911

**FIRE
POLICE
MEDICAL**

IN CASE OF FIRE, PULL
FIRE ALARM, USE EXIT
STAIRS, CLOSE ALL
WINDOWS AND DOORS,
DO NOT USE ELEVATOR.



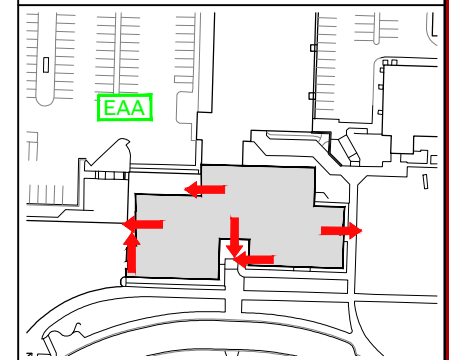
FIRE ALARM WILL SOUND AS
CHIRPING ELECTRICAL HORN,
STROBE LIGHT WILL FLASH.

**PERSONS
WITH
DISABILITIES**

CALL 911, REPORT
YOUR LOCATION,
PROCEED TO THE
NEAREST EXIT OR EXIT
STAIRWELL AND
AWAIT ASSISTANCE.

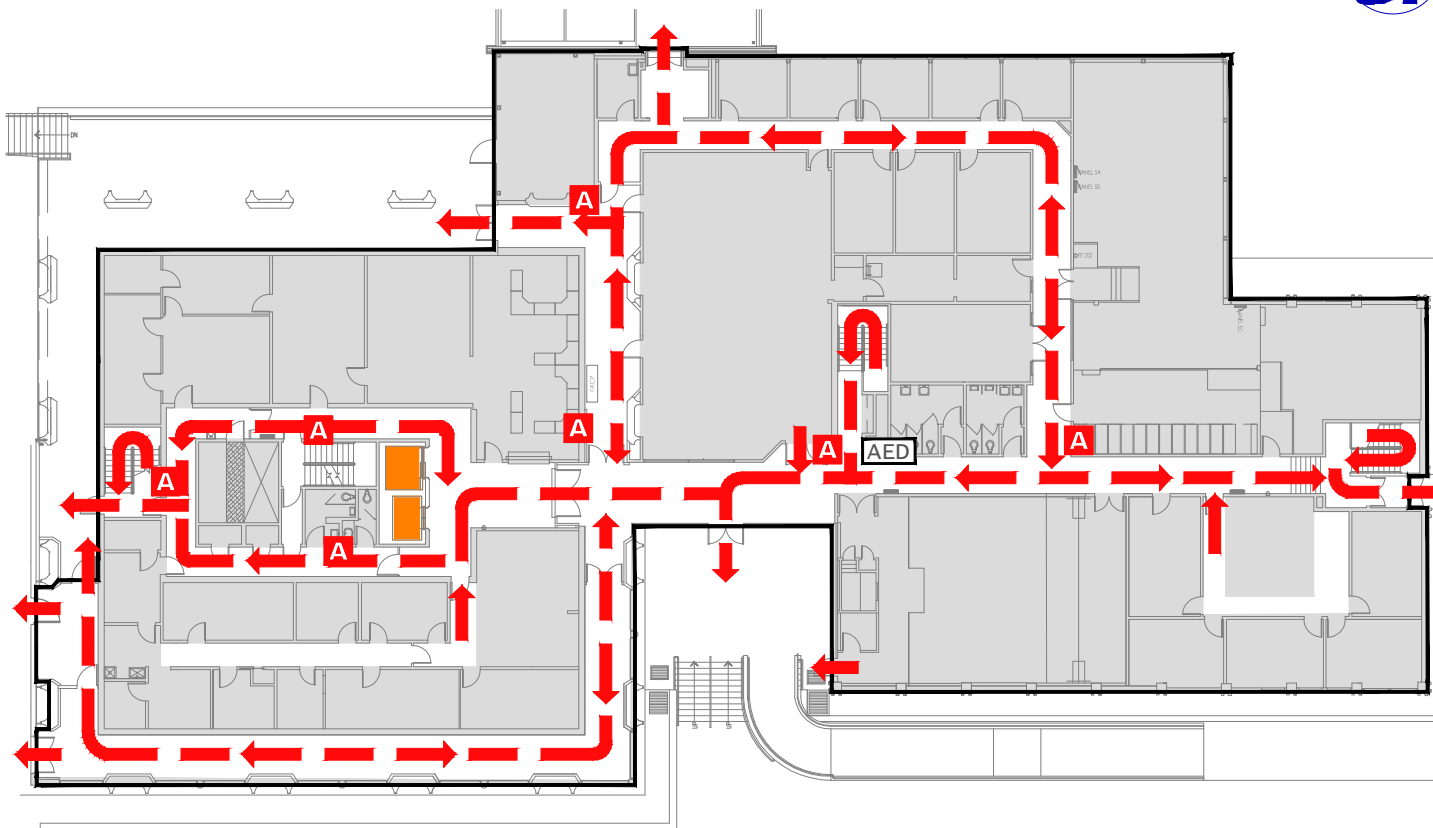


EVACUATION SITE



LAST REVISION: JULY 2016

FOR REVISIONS OR COPIES CONTACT DDC DRAFTING AT UAF-DDC-CADD@ALASKA.EDU



SYMBOL LEGEND

- | | | | | | |
|--|-------------------------|--|------------------------------------|--|--------------|
| | EMERGENCY EGRESS PATH | | ALARM PULL STATION | | YOU ARE HERE |
| | EMERGENCY ASSEMBLY AREA | | ELEVATOR | | |
| | STAIRS | | AUTOMATED ELECTRONIC DEFIBRILLATOR | | |