

# EVACUATION PLAN

BUTROVICH BUILDING, SW910

FLOOR 1



**CALL 911**

**FIRE  
POLICE  
MEDICAL**

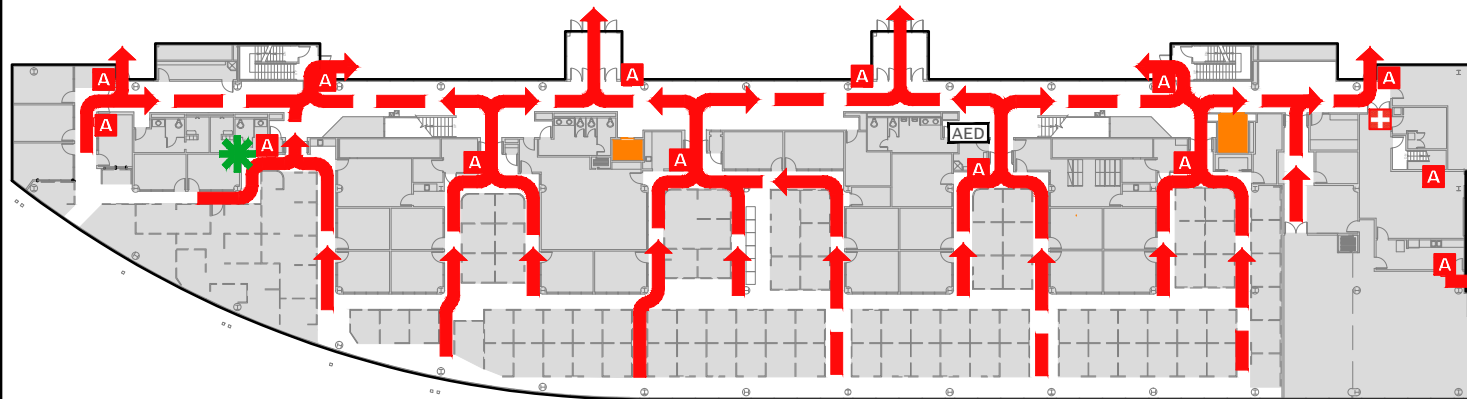
IN CASE OF FIRE, PULL  
FIRE ALARM, USE EXIT  
STAIRS, CLOSE ALL  
WINDOWS AND DOORS,  
DO NOT USE ELEVATOR.



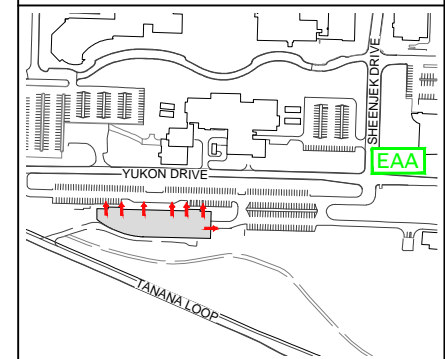
FIRE ALARM WILL SOUND AS  
CHIRPING ELECTRICAL HORN,  
STROBE LIGHT WILL FLASH.

**PERSONS  
WITH  
DISABILITIES**

CALL 911, REPORT  
YOUR LOCATION,  
PROCEED TO THE  
NEAREST EXIT OR EXIT  
STAIRWELL AND  
AWAIT ASSISTANCE.



## EVACUATION SITE



### SYMBOL LEGEND

EMERGENCY EGRESS PATH

FIRST AID

ALARM PULL STATION

ELEVATOR

STAIRS

AUTOMATED ELECTRONIC DEFIBRILLATOR

YOU ARE HERE

EMERGENCY ASSEMBLY AREA

LAST REVISION: DECEMBER 2016

FOR REVISIONS OR COPIES CONTACT DDC DRAFTING AT UAF-DDC-CADD@ALASKA.EDU