

# EVACUATION PLAN

BUTROVICH BUILDING, SW910

BASEMENT

**CALL 911**

FIRE  
POLICE  
MEDICAL

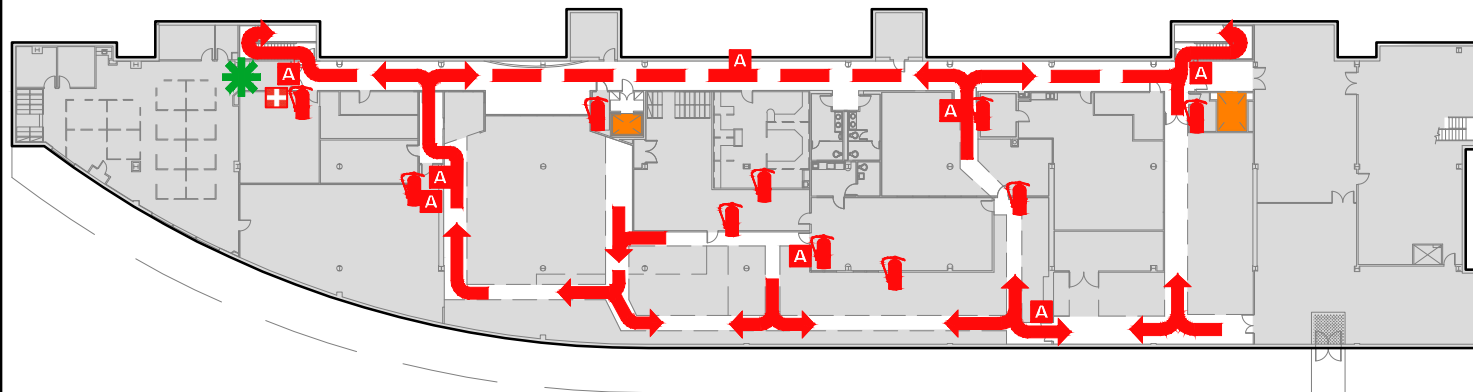
IN CASE OF FIRE, PULL  
FIRE ALARM, USE EXIT  
STAIRS, CLOSE ALL  
WINDOWS AND DOORS,  
DO NOT USE ELEVATOR.



FIRE ALARM WILL SOUND AS  
CHIRPING ELECTRICAL HORN,  
STROBE LIGHT WILL FLASH.

PERSONS  
WITH  
DISABILITIES

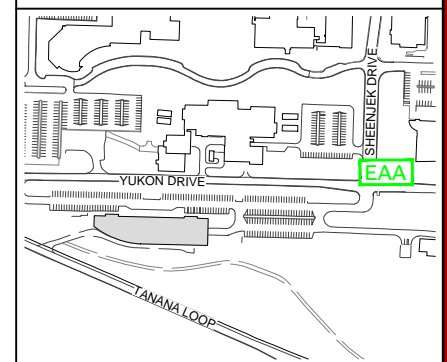
CALL 911, REPORT  
YOUR LOCATION,  
PROCEED TO THE  
NEAREST EXIT OR EXIT  
STAIRWELL AND  
AWAIT ASSISTANCE.



## SYMBOL LEGEND

- |  |                       |  |          |  |                         |  |              |
|--|-----------------------|--|----------|--|-------------------------|--|--------------|
|  | EMERGENCY EGRESS PATH |  | ELEVATOR |  | FIRST AID               |  | YOU ARE HERE |
|  | FIRE EXTINGUISHER     |  | STAIRS   |  | EMERGENCY ASSEMBLY AREA |  |              |
|  | ALARM PULL STATION    |  |          |  |                         |  |              |

## EVACUATION SITE



LAST REVISION: DECEMBER 2016

FOR REVISIONS OR COPIES CONTACT DDC DRAFTING AT UAF-DDC-CADD@ALASKA.EDU