

EVACUATION PLAN

BUNNELL BUILDING, FS303

FLOOR 4



CALL 911

**FIRE
POLICE
MEDICAL**

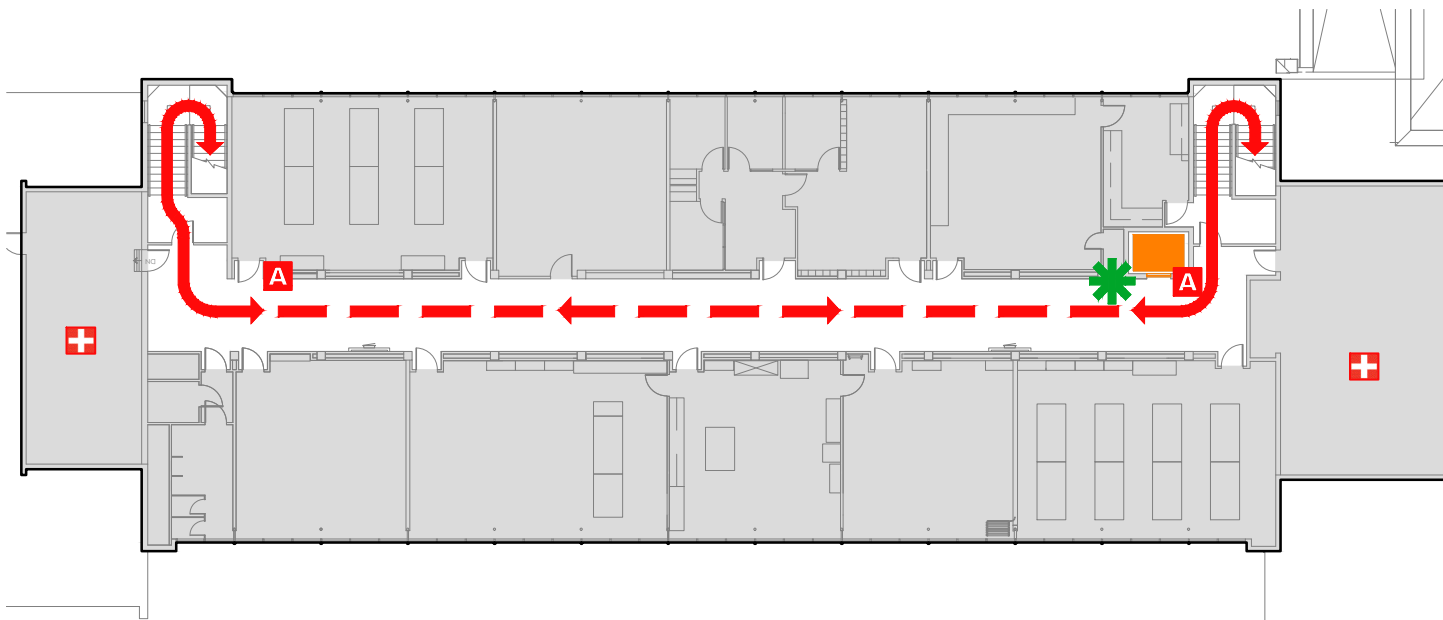
IN CASE OF FIRE, PULL
FIRE ALARM, USE EXIT
STAIRS, CLOSE ALL
WINDOWS AND DOORS,
DO NOT USE ELEVATOR.



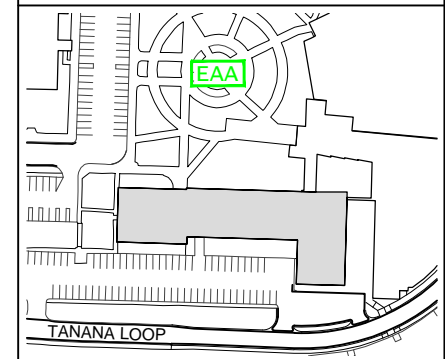
FIRE ALARM WILL SOUND AS
CHIRPING ELECTRICAL HORN,
STROBE LIGHT WILL FLASH.

**PERSONS
WITH
DISABILITIES**

CALL 911, REPORT
YOUR LOCATION,
PROCEED TO THE
NEAREST EXIT OR EXIT
STAIRWELL AND
AWAIT ASSISTANCE.



EVACUATION SITE



SYMBOL LEGEND

- | | | | | | | | |
|--|-------------------------|--|----------|--|--------------------|--|--------------|
| | EMERGENCY EGRESS PATH | | ELEVATOR | | FIRST AID | | YOU ARE HERE |
| | EMERGENCY ASSEMBLY AREA | | STAIRS | | ALARM PULL STATION | | |