

# EVACUATION PLAN

AKASOFU BUILDING, FS930

FLOOR 3

**CALL 911**

**FIRE  
POLICE  
MEDICAL**

IN CASE OF FIRE, PULL  
FIRE ALARM, USE EXIT  
STAIRS, CLOSE ALL  
WINDOWS AND DOORS,  
DO NOT USE ELEVATOR.



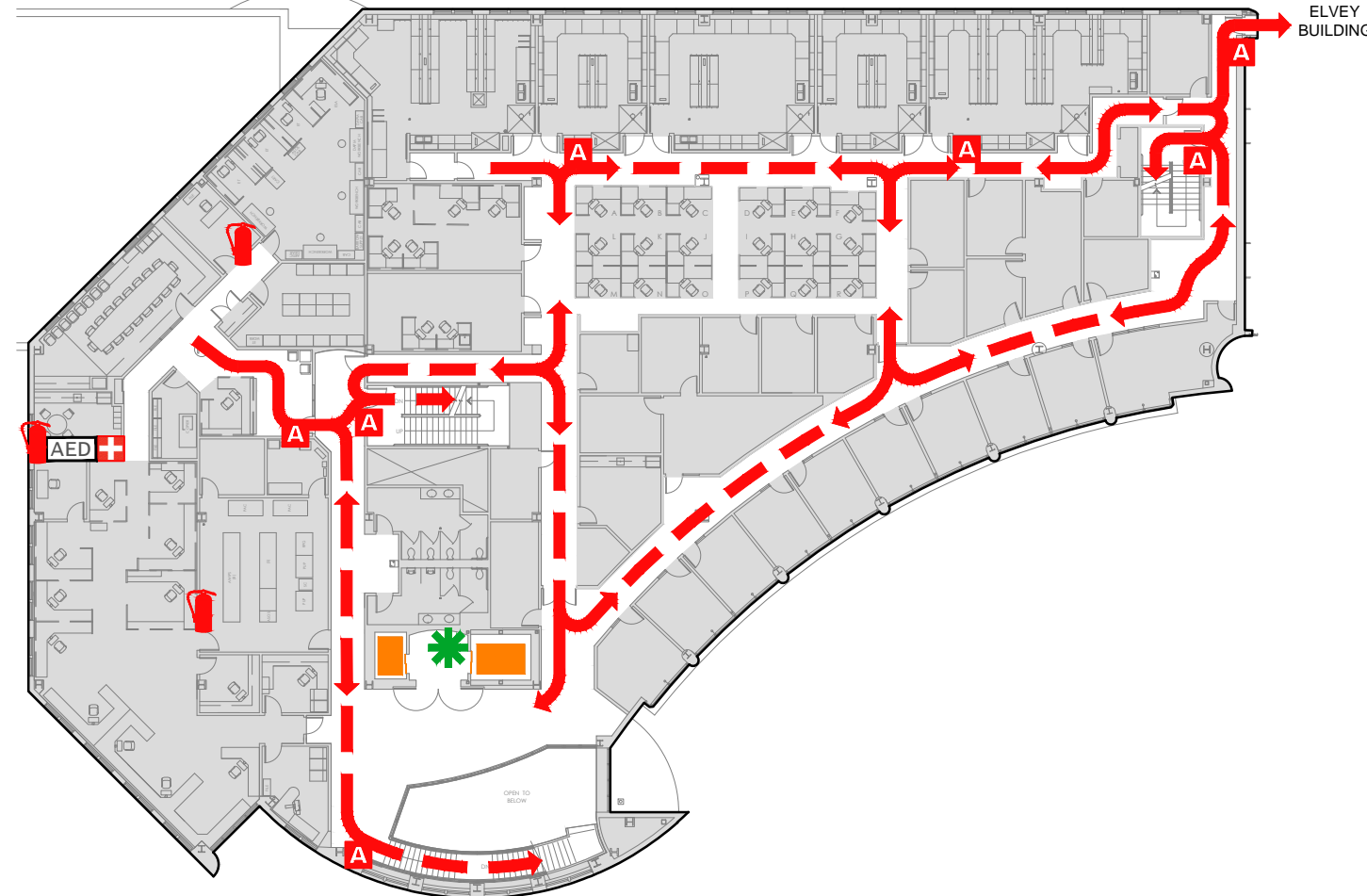
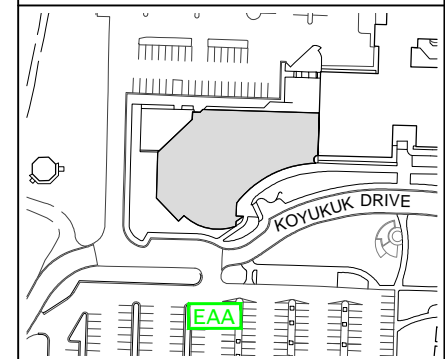
FIRE ALARM WILL SOUND AS  
CHIRPING ELECTRICAL HORN,  
STROBE LIGHT WILL FLASH.

**PERSONS  
WITH  
DISABILITIES**

CALL 911, REPORT  
YOUR LOCATION,  
PROCEED TO THE  
NEAREST EXIT OR EXIT  
STAIRWELL AND  
AWAIT ASSISTANCE.



**EVACUATION SITE**



## SYMBOL LEGEND

- |  |                       |  |           |  |                                    |
|--|-----------------------|--|-----------|--|------------------------------------|
|  | EMERGENCY EGRESS PATH |  | ELEVATOR  |  | EMERGENCY ASSEMBLY AREA            |
|  | FIRE EXTINGUISHER     |  | STAIRS    |  | AUTOMATED ELECTRONIC DEFIBRILLATOR |
|  | ALARM PULL STATION    |  | FIRST AID |  | YOU ARE HERE                       |



LAST REVISION: AUGUST 2016

FOR REVISIONS OR COPIES CONTACT DDC DRAFTING AT UAF-DDC-CADD@ALASKA.EDU