

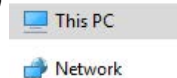


Add a Network Shared Drive in Windows 10 on Domain

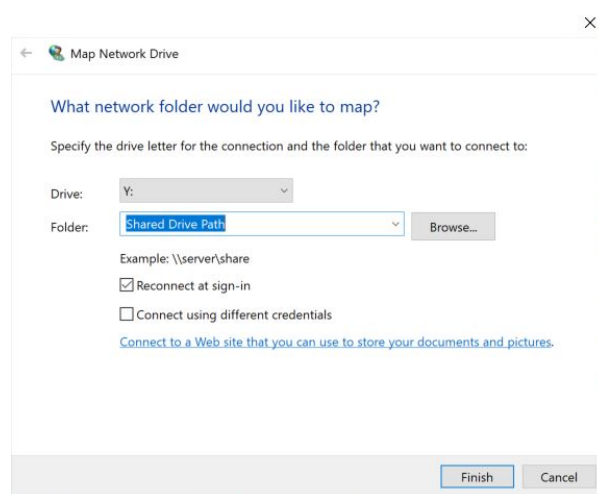
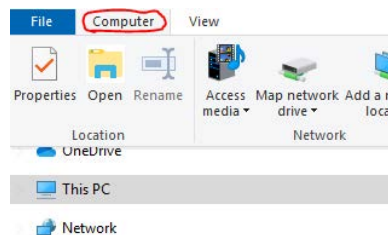
Open the File Explorer icon from the Taskbar



On the left side Select '**This PC**'



Select '**Computer**', then, **Map network drive**'



Select an available letter in the '**Drive:**'

Type the shared drive path in the '**Folder:**'

Check '**Reconnect at Sign In**' Select '**Finish**'

Your mapped '**Shared Drive**' should now appear automatically upon login