



Get inspired by the Earth to create your own artwork!

Materials Needed

Access to outside, natural materials (sticks, rocks, grass, leaves, water, ice, spruce boughs, seed pods, sand, bark, etc.), a camera or phone



Instructions:

Step 1: Look at photos of Earth taken from orbit for inspiration. See the *Observing Earth from Above* sheet for examples. You can try to re-create one of the photos, make artwork inspired by the photos, or let your imagination go wild!

Step 2: Go outside and gather natural materials. (Don't touch anything that may be harmful!) Arrange the materials into different shapes and designs. Try making a miniature landscape, with mountains, rivers, lakes, forests, cities, roads, etc.

For younger children, you can also go on a scavenger hunt to find interesting shapes in nature. See if you can find natural materials in the shapes from the Earth photos.

Step 3: Take a photograph of your artwork from above. Do you see anything new? What colors, shapes, or designs do you notice? Does it remind you of anything? Pretend you are a satellite taking a picture!



Scientists use satellites to take pictures of Earth from above. They observe and map the Earth. Satellites give us important information about floods, forest fires, drought, hurricanes, pollution, and more. This helps us protect people and places.

Observing Earth From Above

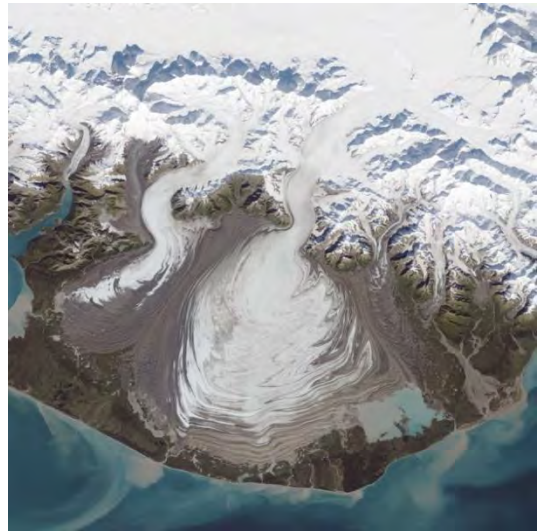
Explore the NASA photos of Earth. Can you see clouds? What colors do you observe? Do you see water, rocks, ice, plants, or other features?

Denali National Park, Alaska



earthobservatory.nasa.gov/images/5721/denali-national-park

Malaspina Glacier, Alaska



earthobservatory.nasa.gov/images/86767/malaspina-glacier-alaska

Bombetoka Bay, Madagascar



www.nasa.gov/image-feature/an-otherworldly-looking-bombetoka-bay-madagascar

Iceland's Longest Fjord



earthobservatory.nasa.gov/images/146657/icelands-longest-fjord

Human-Made Features on Earth

Can you tell if people live in each place? Look for human-made shapes, roads, fields (look for squares), buildings, or lights at night.

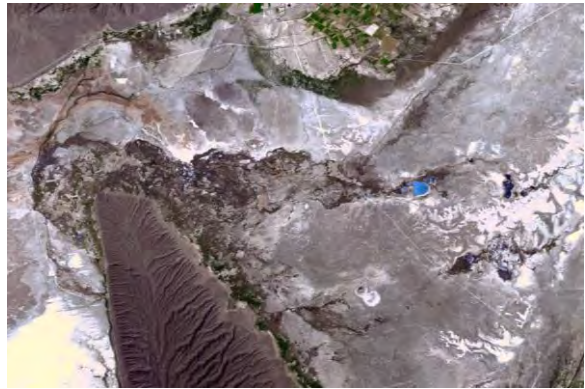
Does anything look unusual? What surprises you about the photos?

Flooding Along the Nueces River, Texas



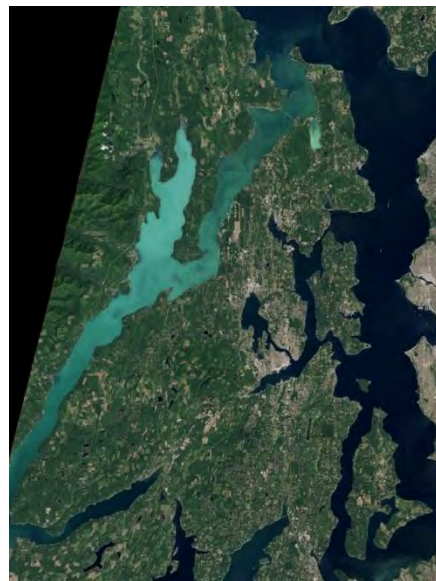
www.nasa.gov/image-feature/cuatro-cienegas-basin-mexico/

Cuatro Cienegas Basin, Mexico



www.nasa.gov/image-feature/flooding-along-the-nueces-river

Bloom in Hood Canal, Washington



earthobservatory.nasa.gov/images/88454/bloom-in-hood-canal-washington

The Americas at Night



www.nasa.gov/sites/default/files/thumbnails/image/city_lights_namerica_8k.jpg

Explore more images of Earth from above:

www.nasa.gov/topics/earth/images/index.html