



UNIVERSITY OF ALASKA **MUSEUM OF THE NORTH**

FY08 annual report • 7.2007–6.2008



## Museum Professional Staff

### Aldona Jonaitis, Museum Director

#### Administration

Barbara Ellanna, Fiscal Professional  
Andrew Quainton,  
Assistant to the Director  
Linda Sheldon, Fiscal Technician

#### Alaska Center for Documentary Film

Leonard Kamerling, Curator\*

#### Archaeology

Jeff Rasic, Acting Curator  
Chris Houlette, Curatorial Assistant  
Scott Shirar, Research Archaeologist  
James Whitney, Collection Manager

#### Communications

Kerynn Fisher, Coordinator

#### Development & Membership

Julie Estey, Director  
Barbara Travis,  
Membership Coordinator

#### Earth Sciences

Patrick Druckenmiller, Curator\*  
Amanda Hanson, Curatorial Assistant

#### Education

Laura Conner, Director  
Jennifer Arseneau,  
Education Program Leader  
Peggy Hetman,  
Education Public Liaison  
Roger Topp, New Media Producer

#### Entomology

Derek Sikes, Curator\*

#### Ethnology and History

Molly Lee, Curator Emerita \*  
Angela Linn, Collection Manager  
Micole Ogletree, Curatorial Assistant

#### Exhibition & Design

Wanda Chin, Director  
Steve Bouta, Chief Preparator  
Tamara Martz, Production Assistant

#### Genetic Resources

Aren Gunderson, Technician  
Gordon Jarrell, Coordinator

#### Fine Arts

Mareca Guthrie, Collection Manager

#### Herbarium

Steffi Ickert-Bond, Curator\*  
Alan Batten, Collection Manager  
David Murray, Curator Emeritus  
Carolyn Parker, Research Professional

#### Ichthyology

Andres Lopez, Curator\*

#### Mammalogy

Link Olson, Curator\*  
Brandy Jacobsen, Collection Manager  
Dusty McDonald, Programmer  
Trina Roberts, Postdoctoral Researcher

#### Operations

Kevin May, Manager

#### Ornithology

Kevin Winker, Curator\*  
Jack Withrow, Collection Manager

#### Visitor Services

Daniel David, Manager  
Morgan Simpson, Store Supervisor  
Janet Thompson,  
Assistant Manager &  
Tour Coordinator

\* UAF faculty holding joint appointment

## Museum Advisory Committee

Mike Cook, Chair  
Linda Anderson  
Jane Behlke  
Michael Burns  
Karen Cedzo  
Mary Jane Fate  
Kirk Lanterman  
Jim Lund

Bob Magee  
Sherry Modrow  
Grace Berg Schaible  
Therese Sharp  
William G. Stroecker  
Joseph E. Usibelli  
Richard Wien  
Nadine Winters

## Friends of the UA Museum

#### Board Members

Helen Atkinson  
Mary Binkley  
DeLois Burggraf  
Phyllis Church  
Donna Dinsmore  
Ted Fathauer  
Jackie Goering

Don Gray  
Kay Hinckley  
Ron Inouye  
Evolyn Melville, Emerita  
Lee O'Hare  
Bill Stroecker  
Ellen Whitcher



Issiisaiyuk Mask  
by John McIntyre

## The Year in Numbers

**Total attendance: 97,081**

**Volunteer hours: 4,360**

**Number of free events: 13**

Full-time staff equivalent: 2.1

Attendance at free events: 4,044

**New specimens: 23,054**

**Accessions: 277**

Outgoing loans: 68



The University of Alaska Museum of the North, located on the Fairbanks campus, is the only museum in the state with a tripartite mission of research, teaching, and collecting. The museum's botanical, geological, zoological, and cultural collections, primarily from Alaska and the Circumpolar North, form the basis for understanding the local as well as the global past, present, and future. Through collection-based research, teaching, and public programs, the Museum shares its knowledge and collections with local, national, and international audiences of all ages and backgrounds.

Cover, clockwise from top left: Entomology curator Derek Sikes in the field (Suzanne Nielsen). Dissecting owl pellets at the 2008 TOTE Family Fun Fest (Kerynn Fisher). Earth science curator Patrick Druckenmiller (courtesy of P. Druckenmiller). Ethnology collections manager Angela Linn installs a porcupine mask for the special exhibition *Hunting and Trapping in Alaska's Interior*. (Micole Ogletree). UA Museum of the North (Patricia Fisher/Fisher Photography).

University of Alaska  
Museum of the North  
PO Box 756960  
Fairbanks, Alaska 99775  
Tel 907.474.7505  
Fax 907.474.5469  
museum@uaf.edu  
www.uaf.edu/museum

Museum Director:  
Aldona Jonaitis  
Editor: Kerynn Fisher  
Designer: Dixon Jones  
Printed at UAF Printing Services  
(150 copies)  
Copyright © 2009

The University of Alaska  
Museum of the North is  
accredited by the American  
Association of Museums.



The University of Alaska  
Fairbanks is accredited by the  
Northwest Commission on  
Colleges and Universities.  
UAF is an affirmative action/  
equal opportunity employer and  
educational institution.



## From the Director



Dear Friends and Supporters,

Writing this year's column for the annual report has been bittersweet – this will be my last column as the director of the University of Alaska Museum of the North. Last year, I announced my plans to retire, and as I write this, the search for my successor is in its final stages.

As you'll read about in this annual report, my successor will join a museum that excels in every aspect of its mission and operations, with a strong base of community support and an incredibly talented and dedicated staff.

Our exhibits and public programs always appeal to diverse audiences, but we definitely raised the bar this year. Working with a team of community experts, our staff developed a special exhibit on hunting and trapping traditions that engaged both local sportsmen and out-of-town visitors with very different backgrounds and perspectives. Adding to an already-robust menu of programs, our education department developed a new youth volunteer program to engage summer visitors.

Our faculty curators conducted research all over the state, as well as several international sites, providing unparalleled research opportunities for university students – and even a few high school students. While we were sad to see two long-time research staff retire,

a new earth sciences curator joined the staff, and we selected a new ichthyology curator, both after competitive national searches.

In our third year of operations in the expanded museum, visitation continued to grow, thanks in part to the return of one of Alaska's major tour companies. However, we saw the beginnings of a softening tourism market and recognize that visitation will likely not increase this year. Fortunately, we've have a very diverse revenue stream – with state funding, federal grants and visitor-related revenue each providing approximately 30% of our revenue. Add to this support from corporate partners, members, donors and volunteers, and I believe we have a solid foundation to weather the current financial storms.

I've long believed that this museum one of the best in the world for its size and mission. I'm certain that my successor will hold the museum to this high standard while taking the museum down new and exciting paths. And I'm excited to watch the museum's progress, happily observing from the sidelines and enjoying the perspective as a newly-retired member of the Fairbanks community.

Aldona Jonaitis  
Museum Director

## Contents

Public Programs	2
Research & Collections	4
Publications	9
Staff Professional Service	9
Development & Membership	10
Gifts to the Collections	14
Visitor Services	15
Financial Summary	16
Grants & Contracts	16

*Baby Ravens* by Rachele Dowdy purchased with funds from the Rasmuson Foundation and installed in the museum's Living Room.





Installation from the special exhibit *Ainu Ramati: Soul of the Ainu*.

Kerynn Fisher

# Public Programs



Volunteer Mary Ann Nickles with objects from the hands-on collection at the 2007 Military Appreciation Family Day.

Kerynn Fisher

## Exhibits

During FY08, the museum offered five special exhibits:

**On the Edge: Forging New Directions in Alaska Native Art**, the summer 2007 special exhibit, featured the work of 23 contemporary Alaska Native Artists. Their innovative approaches and their work explored themes of cultural identity, tradition, change and politics.



Tamara Martz

**Arctic Transformations: The Jewelry of Denise and Samuel Wallace** showcased jewelry by the husband and wife team in a 25-year retrospective exhibit organized by the Anchorage Museum at Rasmuson Center.

Made with fossil ivory, silver, gold and semi-precious stones, the Wallaces' work is inspired by Denise's Chugach Aleut heritage and by Alaska's people, animals and natural environments.

**Ainu Ramati: Soul of the Ainu** highlighted the Ainu culture of Northern Japan and their traditions with historic and contemporary clothing, ritual implements and weavings. The exhibit was organized by the Foundation for the Research and Promotion of Ainu Traditions. Film curator Len Kamerling coordinated the American premier of the film *Ainu: Past and Present* in conjunction with the exhibit.

**Arctic Quest** celebrated the International Polar Year with the work of 25 Canadian artists who documented their impressions of the Northwest Passage during a July 2006 voyage. The exhibit highlighted their journey, their work and their desire to draw attention to northern issues such as climate change, sovereignty and the fragile environment.

**Hunting & Trapping in Alaska's Interior: Our Stories, Our Lives** highlighted traditions and values passed down through generations of Alaskan hunters and trappers, both Native and non-Native. The exhibit was developed with a community advisory team with extensive consultations with hunters, trappers, biologists, anthropologists and oral historians. The exhibit's six-month run was designed to capture both the entire summer visitor season as well as a local audience in fall.

In addition to the special exhibits, the museum showed a short-term exhibit of contemporary furnishings by Tanya Aquíñaga. The artist spent a month in residence at UAF as part of the United States Artist program and made furnishings using Alaska materials such as birch. The museum also hosted a short-term exhibit featuring

the entire collection of KUAC-Alaska One posters as part of the 25<sup>th</sup> anniversary of the annual posters; several of the original artworks featured on the posters are in the museum's fine arts collection.

Staff completed the design and construction of a new entry to the Rose Berry Alaska Art Gallery. The new entry wall blocks direct sunlight into the art gallery to offer more protection for the works on display. They also worked to improve wayfinding and signage within the building.

Exhibit design director Wanda Chin worked with the museum's visitor services staff to develop the Museum Café Gallery, which expands the retail display of the Museum Store and offers visitors additional access to original works by Alaskan artists. They also organized the museum's first Artisan Expo, which showcased the work of local artisans; proceeds from the pre-holiday event supported the museum's special exhibits program.

Chin worked with communications coordinator Kerynn Fisher and designers from UAF's Office of Information Technology to design templates for the museum's new website, which was migrated to a content management system in spring 2008.

## Education

The museum created a new youth volunteer program for local middle- and high-school students. The volunteers spent three afternoons each week in summer interacting with visitors using the museum's hands-on collections. For summer visitors, the department also organized evening tours of the art gallery led by volunteer docents.

UAF Alaska Space Grant Program provided funding for continued development of museum summer shows and the rocket science family program. ASGP also provided special project funding for the development of remote sensing media resources for school tour programs and high school and college level instruction.

NASA and UAF Geophysical Institute provided funding to update scientific visualizations that will be incorporated into the museum's public shows, school tour programs, an online resource database and DVD for free distribution to rural villages throughout Alaska.

Over the course of the school year, almost 3,200 Fairbanks-area school children explored the museum – 1,836 on volunteer docent-led tours and 1,355 on independent teacher-led tours. Thanks to the museum's on-going partnership with Flint Hills Resources, classes on docent-led tours enjoyed free admission for their visit.

The department organized free public lectures throughout the academic year on a variety of subjects related to the museum's mission. Almost 600 people attended one or more of the museum's FY08

*continued on page 15*



Patricia Fisher/Fisher Photography



Jennifer Aveneau

**CLOCKWISE FROM TOP** Artist Denise Wallace in the special exhibit *Arctic Transformations*. Education director Laura Conner with kids at a program on insects. Neal Brown helps launch rockets at the Mars party.



# Research & Collections



Staff archaeologist Scott Shirar in the field.

Andrew Timayne



Graduate student Jack Withrow prepares a specimen for the bird collection at the 2007 Open House.

## Archaeology



Courtesy of Daniel Odess

Funding from the US Fish and Wildlife Service supported the inventory, rehousing and database cataloging of collections from archaeological sites along the Porcupine River and on Unimak Island in the Aleutians.

Students continued preventive conservation on the 1934-35 Department of Interior-Alaska College Expedition collections from Saint Lawrence Island; 26,776 artifacts have been rehoused, inventoried and cataloged in the computer database. A grant from the National Park Service/Institute for Museum and Library Services Save America's Treasures program supported this work.

With continued funding from the Bureau of Land Management, students worked on rehousing, inventorying and cataloging several significant collections from BLM lands in Alaska, including the Ipiutak collections from Point Hope and material from the Iyatayet site, the type collection for the Denbigh Flint Complex.

Curator Dan Odess conducted field work on Russia's Chukotka Peninsula researching the origins of whaling. Research results were featured in national publications, including *Science*, *Nature*, *Natural History* and *Archaeology Magazine*. Odess took a leave of absence from the museum, beginning in September 2007, to serve as Assistant Director for Park Cultural Resources at the National Park Service in Washington, DC.

Acting curator Jeff Rasic conducted field research at the Wiki Peak obsidian source area in the Wrangell Mountains in partnership with Wrangell-St. Elias National Park and Preserve. In partnership with the Smithsonian Institution and the National Park Service, Rasic also analyzed the chemical composition of several thousand obsidian artifacts from the museum and other collections from Alaska to study prehistoric trade and mobility.

Research assistant Scott Shirar participated in archaeological inventory in Yukon-Charley Rivers National Preserve on the upper Yukon River.

## Earth Sciences

Patrick Druckenmiller joined the staff as the curator of earth sciences in October 2007, after spending a portion of the summer field season excavating and studying Jurassic marine reptiles from the arctic archipelago of Svalbard, Norway.

With a new curator on staff and new lab facilities, staff began to process the 12-foot-long ichthyosaur specimen retrieved from the

western Brooks Range in 2002. Initial work included removing the original plaster jacket and creating a new support jacket for the one-ton specimen.

A team of museum researchers and affiliates, including operations manager Kevin May and curatorial assistant Amanda Hanson, spent three weeks in August 2007 digging for dinosaur specimens in a permafrost tunnel excavated in the banks of the Colville River



Kevin May

that spring. The tunnel gave staff the opportunity to dig for fossils outside the active layer of the permafrost, where specimens were shattered into small pieces after being exposed to millennia of freeze-thaw cycles. The team recovered

more than a hundred specimens. Many of the specimens are in excellent condition, including hadrosaur teeth and bones; tyrannosaurid and troodontid teeth; and tiny vertebrae from an as-yet-unidentified dinosaur species, possibly new to Alaska. Outside the tunnel, the team also found a pachycephalosaur jaw fragment, potentially representing a new species. The dinosaurs date to the late Cretaceous period and are approximately 70 million years old. The project was supported primarily by an Australian broadcast production company, which produced a documentary on the project for European audiences and for the PBS series NOVA. ConocoPhillips also supported the project.

Staff worked with the Bureau of Land Management to develop research objectives and plans for future work in the Colville River dinosaur tunnel. BLM granted land use permits for the museum to continue to work at the site. Staff began initial work to describe new plant- and meat-eating dinosaurs from the Nanushuk group based on specimens collected from the museum's Colville River research sites. The department also began the process of incorporating specimen records into the online Arctos database.

## Entomology

Research efforts on federal lands in Alaska continued to generate new species records for the state in addition to new specimens for the collection. Staff and students working with curator Derek Sikes continued to accession 1,705 specimens from the Alaska Peninsula National Wildlife Refuge and prepare a report on this poorly documented region of Alaska. Since 2006, 7,338 pinned



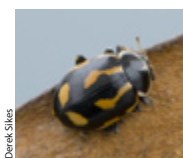
James Whitney



Kevin May

**CLOCKWISE FROM TOP** Archaeology volunteer Tim Williams in Chukotka. Anne Pasch excavates dinosaur fossils from the permafrost in the Berry Adit on the Colville River. Earth sciences volunteer Kelly May and curatorial assistant Amanda Hanson stand outside the Berry Adit on the Colville River. Conservation intern Dawn Planas and students Kelsey Vallejos and Crystal Glassburn work on St. Lawrence Island and TAPS collections in the archaeology laboratory.





Derek Sikes

specimens have been added to the collection from Kanuti National Wildlife Refuge, including 10 new state records (to date). Field work in the Alaska Maritime National Wildlife Refuge resulted in 3,516 specimens, with 193 from Kasatochi Island, collected prior to the eruption of Kasatochi Volcano in August 2008.

Specimens collected from Bureau of Land Management Lands in the Beaver Creek drainage include the first state record for the family Membracidae (*Telamona pyramidata*) and the first state record for the pseudoscorpion *Wyochernes asiaticus*.

Collaborations with the USDA Agricultural Research Service involving ladybeetles (Coccinellidae), ground beetles (Carabidae) and yellowjackets (Vespidae) resulted in the cataloging and processing of 8,200 specimens.

UAF undergraduate student Brandi Fleshman continued her work on the Spider Fauna of Alaska checklist to include the first state records of 24 spider species.

In a "backyard biodiversity" project, Sikes documented the first state records for the families Mycetophagidae and Eucinetidae from his own property in Fairbanks, bringing the total to six for first state species records from the property since 2006.

A catalog of literature records of Alaskan arthropods revealed, to date, 6,644 species documented in Alaska, with 509 species known only in Alaska.

## Ethnology & History

Collection manager Angela Linn served as the project lead and guest curator for the special exhibit, *Hunting and Trapping in Alaska's Interior: Our Stories, Our Lives*. As such, a considerable portion of her time this year was dedicated to expanding relationships with agencies, organizations and individuals to develop the content for the exhibit. In addition to a community advisory team that helped shape the exhibit, partnerships with the Alaska Department of Fish and Game, the Alaska Trappers Association and UAF's Oral History Department were critical to the development of the exhibit.

Curatorial assistant Micole (Van Walbeek) Ogletree joined the staff in January 2008. She focused her efforts on object stabilization, collection research to update database records and streamlining many departmental processes. She also curated an exhibition on the art of William Yanert, which is currently on display at the UAF Rasmuson Library.

Trinity University (Texas) student Bryant Wright spent the summer at the museum as an intern with the Ethnology and Fine Arts

departments. He assisted with the complete reorganization, stabilization and catalog record update of the 1,100+ piece basket collection and also curated an exhibit of Eskimo oil lamps at the UAF Rasmuson Library.

Staff completed the final year of a five-year National Endowment for the Humanities project to improve access to the collections. Staff also continued consultations with the cultural programs division of the Morris Thompson Cultural and Visitors Center.

## Film Center

Film curator Leonard Kamerling collaborated with the National Film Preservation Board at the Library of Congress on a long-term preservation strategy for *Uksuum Cauyai: The Drums of Winter*, a film center work named to the National Film Registry of the Library of Congress in 2006.

Kamerling continued with the restoration of original magnetic and film recordings of Alaska Native life and culture made over the last 40 years. This project, supported by the Alaska Humanities Forum, helped preserve this visual and aural history by "migrating" the original recordings to digital media.

Kamerling began two new productions. *Strange and Sacred Noise* is a collaboration with Alaska composer John Luther Adams and documents the evolution of Adams' percussion piece of the same title. The film traces the journey of Adam's composition from its origins in the elemental sounds of nature to its performance in Alaska Range wilderness location that first inspired its creation.

The second new production, *John Haines - Alaska Poet*, will highlight Haines' life, art and legacy. Work during FY08 included filming interviews, readings and travel to the places that inspired Haines' poems.

Visiting researcher Takashi Sakurai worked with the museum's collections on a project that compares film and audio materials recorded in the Kobuk River community of Shungnak the 1970's with contemporary video material of present day Kobuk River life and culture.

## Fine Arts

In FY08, the museum acquired 19 new works for the collection. Notable additions include Donald Varnell's painted cedar relief carving *Logic Board* and three of Rachelle Dowdy's *Baby Raven* sculptures.



Anna Plager



Angela Linn



Derek Sikes

**CLOCKWISE FROM TOP** Arctic Lady Beetle at UAF's Toolik Field Station. Len Kamerling films the final movement of *Strange and Sacred Noise*. An entomology lab field outing. Ethnology curatorial assistant Micole Ogletree photographs a new acquisition.



The museum also acquired its first Works Progress Administration work, a watercolor by Prescott M.M. Jones from 1937 titled *Roofs, Fairbanks*. Along with 12 other artists, Jones came to Alaska to make works of art that highlighted Alaska's landscapes, cities and lifestyles.

Scott Nacke began preparations for the August 2008 Northern Disclosure exhibit at the Fairbanks Arts Association Bear Gallery. The month-long exhibit highlighted new acquisitions from the fine arts collection. Nacke also continued to organize the museum's collection in the new storage space in the museum's collection range.

## Herbarium

Efforts to digitally image specimens from the collection continued, with more than 91,000 high resolution images incorporated into MorphBank. Of these, 85,000 include links to related specimens records in the museum's Arctos database (<http://arctos.database.museum>). The NSF-funded project began in May 2007 and is running ahead of its projected schedule to process 220,000 specimens from the museum's collection.

The herbarium was allocated 10 terabytes of storage on the NSF TeraGrid, "Ranger." The museum worked with colleagues from the Texas Advanced Computing Center at the University of Texas Austin to permanently store images from the specimen imaging project. Staff are also incorporating the information into the iRODS system (<https://www.irods.org>), which offers improved functionality over MorphBank.

Curator Steffi Ickert-Bond worked with Arizona State University's Marty Wojciechowski on designing primers for whole chloroplast genome sequencing of papilionoid legumes. This effort uses next-generation sequencing Solexa technology at Oregon State University. This cutting-edge technology is generating plastid genomes to provide much-needed data for assessing phylogenetic relationships in closely related papilionoid legumes in a cost-effective way. UAF graduate student Zachary Meyers is using the primers designed from this collaboration for his thesis project on Alaska *Oxytropis* (Fabaceae, loco-weed).

Ickert-Bond spent two weeks at Central Washington State University working with Linda Raubeson on sample prep for next generation Solexa sequencing at OSU, part of the NSF-funded project Assembling the Tree of Life: Gymnosperms.

Ickert-Bond collaborated with ASU's Kathleen Pigg to describe fossils from the Almont/Beicegel Creek floras in North Dakota. The fossils are among the first records for the family and are similar to *Ochna* (Ochnaceae). The presence of the Ochnaceae in the Almont/Beicegel Creek floras suggests that some families within Malpighiales were well established by the Paleocene.

Ickert-Bond conducted field research in Yukon Charley Rivers National Preserve. Research associate Carolyn Parker initiated a biological inventory of the Little Black River headwaters, sponsored by the BLM Northern Field Office. Research associate Alan Batten continued work to document the flora of the Bering Glacier area east of Cordova.

Ickert-Bond was invited by the IUCN - the World Conservation Union, World Heritage Convention, Programme on Protected Areas and World Heritage to evaluate Mount Sanqingshan National Park, China as a new World Heritage site.

## Ichthyology

After a national search, the museum selected Andres Lopez as the curator of ichthyology (fishes), a joint faculty appointment with UAF's School of Fisheries and Ocean Sciences. His research focuses on fish phylogenetics and systematics, comparing different fish species and populations to determine the nature of their genealogical relationships.

## Mammalogy

The museum mammal collection catalogued its 100,000<sup>th</sup> specimen in FY08. An Alaska marmot (*Marmota broweri*) was selected as the milestone specimen; the species is one of the least-studied mammals in North America and may be particularly sensitive to climate change as its range is limited to alpine areas north of the Yukon River. The 100,001<sup>st</sup> specimen, a pygmy sperm whale (*Kogia breviceps*) found dead on the beach near Yakutat, expanded the species' known North American range northward by more than 800 miles. The museum's mammal collection is currently the 10<sup>th</sup> largest mammal collection in the nation, holding more Alaska mammal specimens than all other museums combined.

Curator Link Olson and master's student Kyndall Hildebrandt traveled to Madagascar to conduct surveys of the elusive web-footed tenrec (*Limnogale mergulus*), a semi-aquatic mammal endemic to the island. This research was funded by the National Geographic Society's Committee for Research and Exploration. Master's student Aren Gunderson and Ph.D. candidate Hayley Lanier each traveled to remote alpine areas of Alaska to conduct their continued research on Alaska marmots and collared pikas, respectively.

A \$150,000 grant from the Alaska Department of Fish and Game will support the museum's research on hoary marmots (*Marmota caligata*) in Alaska, British Columbia, Washington, Idaho and Montana. The three-year grant will fund field and lab work and will also support a Ph.D. student. The work builds on recent research on alpine



**FROM LEFT** Herbarium curator Steffi Ickert-Bond and graduate student Zachary Meyers image plant specimens. Michael Manesimana, Link Olson, and Kyndall Hildebrandt leaving a field site in eastern Madagascar.



Mammal researchers in Lake Clark National Park & Preserve.

Neal Westman

mammals, including collared pikas, singing voles and Alaska marmots, also supported by the ADF&G.

Olson was promoted to Associate Professor in UAF's Department of Biology and Wildlife. Lanier was awarded a Doctoral Dissertation Improvement Grant from the National Science Foundation for her continued research on collared pikas.

## Ornithology

Staff and students conducted seven field efforts this year, including expeditions to the Near Islands (Attu and Shemya), the North Slope, the Copper River Delta, Belize and the Philippines. Collecting, salvaging and preparation efforts resulted in the cataloguing of 1,000 new specimens into the collection. Department staff and students gave six scientific presentations at a variety of venues, including the American Ornithologists' Union meeting in Laramie, Wyoming.

West Valley High School teacher Cyndie Beale, who completed two summers of research with the department in the molecular genetics laboratory this year, was awarded the prestigious Presidential Award for Excellence in Mathematics and Science Teaching.

## Research sites



### In Alaska

Aleutian Islands (Amatignak, Little Sitkin, Kasatochi, Adak)  
Bering Glacier  
Colville River  
Denali Highway, Alaska Range  
Kenibuna Lake  
Kokrines Hills  
Lake Clark National Park & Preserve  
Lower Noatak River  
Near Islands (Attu and Shemya)  
North Slope

Ray Mountains  
Sitka  
Steese Highway  
(Twelvemile & Eagle Summits)  
Toolik Field Station  
Utukok, Kokolik, and Kukpowric Rivers  
Wrangell St. Elias  
National Park & Preserve  
Yukon-Charley Rivers National Preserve  
White Mountains

### Outside Alaska

Belize  
Madagascar  
Netherlands Antilles: Saba Island  
Norway: Svalbard  
Philippines  
Russia: Chukotka Peninsula  
Washington State:  
Mt. Rainier & Mt. St. Helens



## Selected Publications

Al-Shesbaz, I.A., J.R. Grant, R. Lipkin, **D.F. Murray, C.L. Parker**. 2007. *Parrya nauruaq* (Brassicaceae), a new species from Alaska. *Novon* 17(3): 275–278.

**Druckenmiller, P.S.**, and A.P. Russell. 2008. Skeletal anatomy of an exceptionally complete specimen of a new genus of plesiosaur from the Early Cretaceous (early Albian) of northeastern Alberta, Canada. *Palaeontographica Abteilung A*, 283(1-3):1-33.

Elven, R., **C.L. Parker**, H. Solstad. 2007. Litt til om griffelstarr *Carex stylosa* I Skibotn. *Blyttia* 65(3): 146-147.

Erritzoe, J., K. Kampp, **K. Winker**, and C. Frith. 2007. The Ornithologist's Dictionary. Lynx Edicions Press.

**Gibson, D. D.**, S.C. Heinl, and T. G. Tobish, Jr. 2008. Checklist of Alaska birds, 14th edition.

Gilbert, C., S.M. Goodman, V. Soarimalala, **L.E. Olson**, P.C.M. O'Brien, F.F.B. Elder, F. Yang, M.A. Ferguson-Smith, and T.J. Robinson. (2007). Chromosomal evolution in tenrecs (*Microgale* and *Oryzorictes*, Tenrecidae) from the Central Highlands of Madagascar. *Chromosome Research* DOI: 10.1007/s10577-007-1182-6.

**Ickert-Bond, S. M.** 2008. Ephedraceae. Second Edition of The Jepson Manual: Vascular Plants of California. University of California Press, Berkeley (available online) <http://ucjeps.berkeley.edu/tjm2/review/treatments/ephedraceae.html>

Johnson, A. B., and **K. Winker**. 2008. Autumn stopover near the Gulf of Honduras by Nearctic-Neotropic migrants. *Wilson Journal of Ornithology* 120:277–285.

Kim, L. M., D. J. King, P. E. Curry, D. L. Suarez, D. E. Swayne, D. E. Stallknecht, R. D. Slemmons, J. C. Miller, M. J., E. Bermingham, J. Klicka, P. E. Escalante, F. S. Raposo do Amaral, J. Weir, and **K. Winker**. 2008. Out of Amazonia again and again: Episodic crossing of the Andes promotes diversification in a lowland forest flycatcher. *Proceedings of the Royal Society of London B* 275:1133–1142.

Morris, A.B., **Ickert-Bond, S.M.**, Brunson, B. D., Soltis, D. E., Soltis, P. S. 2008. Intraspecific divergence time estimation reveals temporal complexity in phylogeographic patterns of American sweetgum (*Liquidambar styraciflua*). *Molecular Ecology* 17: 3889–3900.

Nishikawa, M. and **D. S. Sikes**. 2008. New records and range extensions of Asian Silphidae (Coleoptera). *Taichius Special Publication of the Japan Coleopterological Society*, 2: 127–143.

**Odess, Daniel** and **Jeffrey T. Rasic**. 2007. Toolkit Composition and Assemblage Variability: Implications from the Nogahabara I Site, Northern Alaska. *American Antiquity* 72(4):691–717.

**Odess, Daniel** and Scott Shirar. 2007. New Evidence of Microblade Technology in the Nenana Complex Type Site at Dry Creek, Central Alaska. *Current Research in the Pleistocene* 24:129–131.

**Odess, Daniel**. 2007. The University of Alaska Museum and the Curation Crisis in Alaskan Archaeology. *Alaska Journal of Anthropology* 5(2):175–185.

**Olson, L.E.**, E.J. Sargis, W.T. Stanley, K.B.P. Hildebrandt, T.R.B. Davenport. 2008. Additional molecular evidence strongly supports the distinction between the recently described African primate *Rungwecebus kipunji* (Cercopithecidae, Papionini) and *Lophocebus*. *Molecular Phylogenetics and Evolution* 48: 789–794.

**Parker, C.L.** and S. Studebaker. 2007. Botanical Survey of Ultramafic Exposures in the Kodiak Late Glacial Refugium, Kodiak Island, Alaska. Unpublished report submitted to Kodiak National Wildlife Refuge, USFWS. 46 pp.

Pedersen, D. A. Senne, **K. Winker**, and C. L. Afonso. 2007. Phylogenetic diversity among low-virulence Newcastle disease viruses from waterfowl and shorebirds and comparison of genotype distributions to those of poultry-origin isolates. *Journal of Virology* 81:12641–12653.

Pruett, C. L., and **K. Winker**. 2008. Evidence for cryptic northern refugia in both high- and temperate-latitude species in Beringia. *Climatic Change* 86:23–27.

Pruett, C. L., and **K. Winker**. 2008. The effects of sample size on population genetic diversity estimates in Song Sparrows, *Melospiza melodia*. *Journal of Avian Biology* 39:252–256.

Pruett, C. L., P. Arcese, Y. Chan, A. Wilson, M. A. Patten, L. F. Keller, and **K. Winker**. 2008. The effects of contemporary processes in maintaining the genetic structure of western song sparrows (*Melospiza melodia*). *Heredity* 100:67–74.

**Rasic, Jeffrey T.** and Paul Matheus. 2007. A Reconsideration of Purported Holocene Bison Bones in Northern Alaska. *Arctic* 60(4):381–388.

**Sikes, D. S.** 2008. Book review of "Insects: Their Natural History and Diversity" by S. A. Marshall. *American Entomologist*. 54 (1): 57.

**Sikes, D. S.** 2008. Outbreaks of the grass fly *Thaumatomyia annulata* (Walker) (Diptera: Chloropidae) in Alaska. Newsletter of the Alaska Entomological Society 2(1): 2–4. [http://www.akentsoc.org/doc/AKES\\_newsletter\\_2008\\_1.pdf](http://www.akentsoc.org/doc/AKES_newsletter_2008_1.pdf)

**Sikes, D. S.**, S. M. Vamosi, S. T. Trumbo, M. Ricketts, C. Venables. 2008. Molecular systematics and biogeography of *Nicrophorus* in part – The investigator species group (Coleoptera: Silphidae) using mixture model MCMC. *Molecular Phylogenetics and Evolution* 48: 646–666. [doi:10.1016/j.ympev.2008.04.034]

Smith, G., S. T. Trumbo, **D. S. Sikes**, M. P. Scott and R. L. Smith. 2007. Host shift by the burying beetle, *Nicrophorus pustulatus*, a parasitoid of snake eggs. *Journal of Evolutionary Biology*. 20: 2359–2399. doi: 10.1111/j.1420-9101.2007.01404.x

Topp, C. M., and **K. Winker**. 2008. Genetic patterns of differentiation among five species of landbirds on the Queen Charlotte Islands, British Columbia. *Auk* 125:461–472.

Wen, J., Berggren, S. T., Lee, C.-H., **Ickert-Bond, S. M.**, Yi, T.-S., Yoo, K.-O., Xie, L., Shaw, J., and D. Potter. 2008. Phylogenetic Inferences in *Prunus* (Rosaceae) Using Chloroplast ndhF and Nuclear Ribosomal ITS Sequences. *Journal of Systematics and Evolution* 46 (3): 322–332.

**Winker, K.** 2007. [Review of] Handbook of the birds of the world, Vol. 11: Old World flycatcher to Old World warblers. *Loon* 79:234–236.

Yom-Tov, Y., S. Yom-Tov, and **G. Jarrell**. 2008. Recent increase in body size of the American marten *Martes americana* in Alaska. *Biological Journal of the Linnean Society* 93:701–707.

Yom-Tov, Y., S. Yom-Tov, **D. MacDonald**, and E. Yom-Tov. 2007. Population cycles and changes in body size of the lynx in Alaska. *Oecologia* 152:239–244.

Zhang, A. B., **D. S. Sikes**, C. Muster, S. Q. Li. 2008. Inferring Species Membership via DNA Barcoding with Back-propagation Neural Networks. *Systematic Biology*, 57: 202–215.

## Staff Professional Service

Alaska Bird Observatory, Scientific Advisory Committee  
Alaska Entomological Society, Secretary  
American Association of Museums,

Registrars Committee – Western Region, Secretary  
American Ornithologists' Union, Associate Editor, *The Auk*  
American Ornithologists' Union, Check-list Committee  
American Ornithologists' Union, Committee on Bird Collections, Chair  
American Ornithologists' Union, Publications Committee  
American Society of Plant Taxonomists, Publicity Committee  
CINE National Film Festival, Jury Chair, Documentary Category

Coleopterist's Society, Executive Council  
Committee of the Biological Survey of Canada, Scientific Board  
Fairbanks Convention & Visitors Bureau, Past Chair  
Fairbanks Convention & Visitors Bureau, PR & Advertising Committee  
Flora of North America, Board of Directors  
& regional coordinator Alaska-Yukon  
Society for Visual Anthropology, AAA National Film Festival Jury Member  
Western Field Ornithologists, Board  
Western Museums Association, Board of Directors  
Western Museums Association, Program Committee



## Development & Membership



Chocolate Bash 2008.



The University of Alaska Museum of the North is an institution as unique as the northern cultures and lands we celebrate. We rely on a broad range of community support to ensure success in fulfilling our mission. We are proud to have a strong group of supporters who believe in what we can accomplish together.

Thank you to our donors for all the ways you support the University of Alaska Museum of the North

## Corporate Support

Corporate support contributes to the wide range of educational programming, special exhibits and outreach activities offered throughout the year. This support allows us to provide essential programming that educates and inspires and builds alliances that strengthen our position in the regional and scientific community. It is a vital source of income for the museum and a valuable public relations tool for our corporate partners. Our program offers national and regional corporations name recognition, exposure and connections. In FY08, BP became our newest corporate partner, joining the Fairbanks Daily News-Miner, Flint Hills Resources, Holland America Line, Totem Ocean Trailer Express and Wells Fargo, who all renewed their support of the museum this fiscal year.

## Membership

Since the inception of the membership program, we have worked to achieve the goal of \$50K per year. In FY08, our fifth year, the museum was proud to reach that goal with \$50,200 from 760 members. The museum saw a 20% increase in our second tier memberships of \$125 or above.

Free admission to the museum, a discount at the Museum Store and other membership benefits allow us to say thank you for supporting our mission. This year, members were invited to an exclusive screening of *The Journals of Knud Rasmussen*, the latest film from the director of *Atanarjuat (The Fast Runner)*.

## Private Donors and Foundations

In addition to the individuals and families who support the museum as members, we rely on the support of individual patrons to assist us with operational costs, research projects and additions to our collections. Museum visitors donated also more than \$2,500 to the various museum donation boxes over and above their admission price in support of the museum's mission.

## Fundraising Events

### Chocolate Bash

The annual Chocolate Bash showcases decadent chocolate desserts from regional businesses and is a much-anticipated rite of spring in Fairbanks. This year's event, themed 'Diamond Pearls and Chocolate Swirls', was another sold out affair. More than 400 people attended the event, raising more than \$10,000 for the museum's endowment fund.

Thanks to our 2008 Chocolate Bash partners:

**Desserts:** Alaska Coffee Roasting Company, Bittersweet, Coca-Cola of Alaska, Cold Stone Creamery, Fairbanks Memorial Hospital, Fairbanks Princess Riverside Lodge, Hot Licks Homemade Ice Cream, Iris Café, Lavelle's, NANA Management, UAF Dining Services, NK Enterprises, North Pole Coffee Roasting Company, Odom Company, Pump House Restaurant, Savor...Alaska Catering by SMG Carlson Center, Sky's the Limit Catering, Spring Alaska, Sweet Dreams, The Fudge Pot, TVC Culinary Arts Program, Two Street Station Espresso & Eatery

**Floral Arrangements:** A Daisy A Day, Borealis Floral, College Floral, Safeway, University Center, UAF Controlled Environment Agriculture, Fred Meyer West, Santa's Flowers, Santana's Flower & Gift, Wal-Mart

### TOTE Family Fun Fest

In June, a day of hands-on activities under the big top tent on the museum's lawn marks a special occasion to connect youth and families to the culture and science of our research collections. In its 10<sup>th</sup> year, the TOTE Family Fun Fest raised more than \$30,000 through contributing sponsorships and admission revenue. More than 600 children and parents enjoyed a fun-filled day under the big top tent.

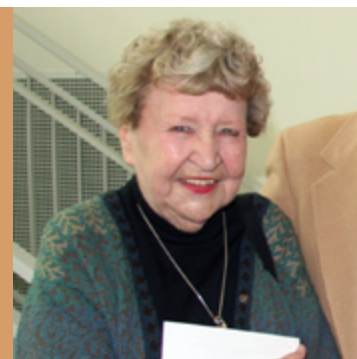


Beginning the salmon migration at the 2008 Fun Fest.

Kerynn Fisher

## Donor Highlight: Grace Schaible

Longtime museum supporter Grace Schaible has been leading the way in museum fundraising for years, helping build our endowments and serving as an instrumental member of the expansion campaign and Museum Advisory Council. Over the past few years, Grace joined with friends to host a private reception to build a special fund that supports the museum's dynamic and informative special exhibits program. This year's event featured special guest and artist Denise Wallace, whose work was highlighted in the 25-year retrospective exhibit *Arctic Transformations*. In FY08, Grace's efforts resulted in almost \$20,000 in private donations to the fund.



Julie Estey

## Donors of Record July 1, 2007 – June 30, 2008

### CORPORATE PARTNERS (\$10,000 AND ABOVE)

BP  
Fairbanks Daily News-Miner  
Flint Hills Resources Alaska  
Holland America Line  
Totem Ocean Trailer Express  
Wells Fargo

### \$50,000-\$99,999

Eurasian Pacific Wildlife  
Conservation Foundation  
Horace Willard Nagley II

### \$10,000-\$49,999

ConocoPhillips Alaska  
Hugh & Jane Ferguson  
Foundation  
Bruce J. Hayward  
Barry and Dorli McWayne  
Wildlife Conservation Society  
of Tanzania

### \$5,000-\$9,999

J. Michael and Ginger Carroll  
Furbearers Unlimited  
Rasmuson Foundation

### \$1,000-\$4,999

Alaska Trappers Association  
Linda Anderson and  
Stephen Frank  
Jane H. Behlke  
Mary E. Binkley  
Douglas and Marcel Colp  
Consulate of Canada  
Leonie H. Deramus  
Doyon, Ltd.  
Fairbanks Cancer Treatment  
Center  
Fairbanks Urgent Care Center  
John and Jacqueline Goering  
Stephen and Judith Jones  
KTVF Channel 11  
KUAC  
Robert L. Lathrop  
Dirk Lummerzheim  
James and Phyllis Movius  
Mary Ann Nickles  
Outdoor Heritage  
Foundation of Alaska  
Michael and Donna Patrick  
Charles W. Lemke and  
Phyllis Pendergrast  
Safari Club International  
Alaska Chapter

Safari Club International  
Kenai Chapter  
Grace Schaible  
Todd Z. Wentz Orthodontics  
Kevin Winker and Rose Meier  
Joseph E. Usibelli and  
Peggy Shumaker  
Usibelli Foundation

### \$250-\$999

Syun-Ichi and Emiko Akasofu  
M. Barbara Annan  
John R. Bockstoce  
Mary A. Borchert  
Lloyd and Bertha Bucher  
Susan Campbell and  
Keith Echelmeyer  
Edward Clark and  
Judith Dearborn  
Charles and Geraldine Collins  
Michael and Sharon Cook  
Cook, Schuhmann, and  
Groseclose  
William and Gaye Crawford  
James and Nancy DeWitt  
Wanda Chin and Terry Dickey  
Dale A. Durrwachter  
First National Bank of Alaska  
Mark and Patricia Hamilton  
Christopher H. Henry  
D.M.D., M.S., P.C.  
Duane and Carol Heyman  
Bowman and Kay Hinckley  
Ronald K. Inouye  
Harold F. John  
Aldona Jonaitis  
Patty Kastelic and Sam Stoker  
Cary S. Keller,  
Sportsmedicine Fairbanks  
Local 375 Voluntary  
Charitable & Educational  
Fund  
Kevin C. May  
William and Eileen Montano  
Moving Images  
New Horizons Gallery, Inc.  
Northern Alaska  
Environmental Center  
Dan and Gwendolyn Ramras  
Edward and Cathryn  
Rasmuson  
Robert and Virginia Rausch  
Paul and Terry Reichardt  
Juan and Beatriz Roederer  
Brian Rogers and  
Sherry Modrow

Rotary Club of Fairbanks  
Dick and Jo Scott  
Jeannine D. Senechal  
Span-Alaska Consolidators,  
Inc.  
Spenard Builders Supply  
Glen and Gretchen Straatsma  
Stephen Sutley and  
Maree Barney-Sutley  
Keith and C. Jean Sworts  
University Women's  
Association  
Candace G. Waugaman  
Kesler and Marianna  
Woodward  
A.L. Buki Wright Jr. and  
Peggy Wright

### UNDER \$250

Anonymous  
Venessa Acham  
Richard and Roberta Ackley  
T. Kristina Ahlnas  
Roy and Eunsuk Alabran  
Alaska Great Lakes Project  
Alaska Humanities Forum  
Dr. Vera Alexander  
Thomas and Katherine Alton  
David and Barbara Andersen  
Ann's Greenhouses  
Linda Aronow-Brown and  
John Brown  
Janet Asaro  
Helen L. Atkinson  
Paul K. Atkinson  
Stephen Austin  
AVAYA Matching Gift Center  
Mara Bacsujlaky  
Julie C. Baecker  
Paul Baicich  
Mary Ellen Baker  
Thomas and Sharon Baring  
Michelle K. Bartlett and  
William Holman  
Fred and Kathleen Bast  
Alan R. Batten  
Joseph and Barbara Beedle  
Gary and Laura Bender  
Diana Benson  
Dr. Elizabeth Bent and  
Seth Schwartz  
Laura Berkowitz and  
Jan Julian  
Robert Berman

Stephen Beverburg and  
Carol Shepard  
Uma Bhatt and  
David Newman  
Anne Biberman  
Peter and Elizabeth Biesiot  
Nancy Bigelow  
Margaret M. Billington  
S. Robert Billo  
Margaret A. Birkenbuel  
Richard and Mary Bishop  
Horace and Suzanne Black  
David Bobo  
Dennis Bogren and  
Elizabeth Turner-Bogren  
Marianne Boko  
Jeffrey and Nevada Bovee  
Dana Bowne  
Douglas and Joan Braddock  
Jane Brand  
Emily Bratcher and Josh Kunz  
Bryan Brayboy and  
Doris Warriner  
Bill and Bonnie Brody  
Bill and Kristina Brophy  
Jerry and Celia Brown  
Neal Brown and  
Frances Tannian  
Travis Brown  
Alison E. Browne  
Timothy and Maida Buckley  
George and Susan Burgess  
Roger and DeLois Burggraf  
Roger and Sylvia Burns  
David and Helen Burrell  
Melanie Burtis  
Kim Buty  
Laurie K. Calderhead  
Adriana Cameron  
Raymond and Jill Cameron  
Paul and Maureen Canarsky  
Patrick and JoEllen Cariati  
Kurt Carlson and  
Karen Loughheed  
Kathryn and Philip Carrico  
Louis J. Catinella  
Karen Cedzo and  
Harvey Wieler  
Nansi Chandler-Norum and  
Michael Norum  
Allen R. Cheek P.C.  
Jessica Cherry and  
Robert Busey  
Karen Christiansen and  
Thomas Phillips  
Anne and David Christie  
Phyllis Church  
Karen and Steve Clautice  
Jean L. Coe

Kenneth and Lynn Coe  
Marc and Marilee  
Coles-Ritchie  
Marlin Collins  
Randall Compton  
Bill and Betty Connor  
Leanne Converse and  
Arthur Jess  
Dennis and Olga Cook  
Jeffrey and Susan Cook  
Lillian Z. Corti  
Peter Craven  
Roxanne Creamer  
Eric Danielson  
Charles and Barbara Darland  
Edward and Hazel Daro  
David and Lisa Daum  
John and Susan David  
T. Neil and Rosemarie Davis  
Janice Dawe and  
Lawrence Kaplan  
Lynn Dawes  
Frederick and Sue Dean  
Charles and Tone Deehr  
Anne Dellenbaugh  
Kathy Demac  
Kirt Demientieff  
Anne DeMuth and  
Mark Hodge  
Claire Dickey Licht and  
Louis Licht  
Ann Dimmick  
Donna L. Dinsmore  
Daniel H. Dinwoodie  
Judy and Carl Divinyi  
James Dixon and  
Barbara Day  
Ann Dolney  
David and Nancy Dreydoppel  
Gianna A. Drogheo  
Michael Drury  
Erik and Emily Drygas  
Lawrence and Geraldine  
Duffy  
Dennis Dussman and  
Debra Chesnut  
Joseph and Rheba Dupras  
Margaret B. Eagan  
Margaret Eagleton and  
Trusten Peery  
Hajo Eicken and  
Angela Dirks-Eicken  
Paul Ewers and  
Nicole Eiseman  
Janet Elliot  
Dana and Joe Elmore  
Robert and Elizabeth Elsner  
Frances Erickson and  
Jan Plaquet

## Volunteer Highlight: Lee and Betty Higbie

More than 400 individuals give their time, energy and expertise to the museum each year. These volunteers are invaluable to many of our departments and indispensable during our events. Anyone who has attended one of the museum's special events in the past few years has likely met volunteers Lee and Betty Higbie. They are often among the first to sign up for special event volunteer duties, doing everything from serving as greeters to providing extra assistance to visitors in the galleries. "This is a great museum and volunteering means we get to visit more often," says Betty. "We enjoy sharing the museum with others and helping people experience this amazing resource. It is our way of giving back."



Doug and Janice Erickson	Kenneth H. Hobson	Mary Liston	Bill and Marsha Pike	William J. Stringer
Todd and Julie Estey	Jonathan Holstein	Lindsey and Mary Lynch	Christopher Nye and Anna Plager	Theresa Strle and Steven Ferree
Rana Evans	Robin Holyman	Teresa A. Lyons	Robert and Marjorie Poggas	Susan F. Sugai
Hugh and Mary Jane Fate	Kim Hopper	Patricia M. Mack	Mike and Peggy Pollen	Suzann Suzawith
Marie Q. Fate-Haggard	Murray and Kristy Howk	Curt and Rebecca Madison	Denis and Andree Porchet	Susan Swenson
Charles and Charlotte Faulkner	Constance Huber	Eric and Janet Madsen	Pat Pourchot	Daniel and Ann Swift
Barbara Fay	Tim and Joy Huber	Dennis Mailhot	Marc and Jennifer Price Wolf	Corlis and James Taylor
Yolande Fejes and Ronald Veliz	Kris and Gretchen Hundertmark	Martin and Gail Maricle	Andrew C. Quainton	Robert and Ingrid Taylor
John and Sheila Fellerath	Tom and Diane Irwin	Bud and Jamie Marschner	Roland and Kathy Quimby	Ronald and Mary Teel
Earl Finkler	Steven and Anna Jacobson	Chase and Sarah Marshall	Steven and Alice Rast	The Four Corporation
Connie Fischer	Bill and Jean James	Katherin Matolcsy	Martha Raynolds and Samuel Dashevsky	Valerie M. Therrien
Scott and Elisabeth Fisher	Karyn Janssen	James and Barbara Matthews	Peter and Barbara Reader	Suzanne Thielke
Kerynn Fisher	Jeff Jerue	Patricia McAdoo	Hilde Reimer	Janet Thompson and David Sala
Lottie C. Fleeks	Fred and Bonnie Johnson	Ann and Michael McCann	Jack and Edith Reisland	Curtis L. Thorgaard and Nancy Kilgore
Larry Fogleson and Teresa Glendinning	Jeff and Debbie Johnson	Annette McDonald	Thomas Richardson	Mike and Patricia Thurman
James and Karen Foote	Margie A. Johnson	Caryn McElroy	Robert Roadcap	Theresa H. Tomczak
Torie and Thom Foote	Daniel and Janet Johnson	Michelle McGowan and Paul Friedman	Larry and Cathy Roberts	Terry Tomczak
Janie Foster	Glenn and Nancy Johnson	Joy Morrison and Susan McInnis	William and Betsy Robertson	Jack and Frieda Townshend
Mary Frank	Patricia Johnson	George and Laurel McLaughlin	James C. Rogan and Molly Leahy	Katherine Trahanovsky and Keith Grimes
Karl Franke and Maia Genaux	Tracy A. Johnson	Loyola McManus and Philip Antle	Richard and Debra Rogers	Barbara and Charles Travis
Nancy Fuller	Keith and Sally Johnston	Herbert and Hilda Melchior	Susan Royer	Marvin and Paula Tretkoff
M. Clark Fultz	Warren and Janet Jones	Merrie Mendenhall	Barbara Rudio	Eric Troyer and Corrine Leistikow
Warren Gammel	James Jorgensen	Harry and Ruth Merriman	Kenneth Russell and Laurel Devaney	Siri Tuttle
Amy and Scot Geiger	Diane Jung	Dora and David Meyer	Jon and Mari Sallstrom	John and Alica Unruh
Alfred and Betty Ruth George	William and Barbara Kaine	Cathy Middlecamp	Craig Salsbury and Barbara Pomar	Constance Vorenkamp
Thomas and Sharon George	Carol Kasza and Jim Campbell	Jean and Frank Miles	Sandy Samaniego	Renate A. Wackerbauer
Ellen Gianni	Toni Kaufman and John Manthei	Debbie Miller	James and Beth Sampson	Hal Wagner
Gary Goodnow	Sylvia Kelso	Pamela Miller	Kenneth Sassen	Daniel and Penelope Ward
Mary Goodwin	Emily J. Kemak	Mary M. Mitchell	Steven and Becky Scheller	Reford and Marie Ward Reid
Shirley L. Gordon	Quentin and Margaret Kessel	Nate and Jamie Mohatt	Philip and Janet Schempf	Mark and Denise Wartes
Barbara Gorman	Jon Lindstrom and Janet Kidd	Gerald and Roberta Mohatt	Brian and Melody Schneider	Steve and Kay Watkins
Tammy Graff	Don Kiely	Dave Mollett and Jessie Hedden	Michael and Lea Schuldiner	Mary Lou and Walter Weese
Don and Carolyn Gray	Rachelle Kinkead	Milan and Sherry Mons	Michael Schwitters	Sandra E. Westcott
Jane Gregory	Claire Kirpich	James E. Moody P.E.	Dolores J. Sczudlo	Ellen L. Whitcher
Willis and Patty Greimann	Stephanie Kishaba	Ronald and Connie Moore	Steven Seefeldt and Susan McMinn Seefeldt	Kai Whitehill
Arnold Griese	Zin Kittredge	John and Nancy Morgan	Keith and Barbara Severin	Kenneth Whitten and Mary Ruth Zalar
Jeff and Loda Griffeth	Margo Klass and Frank Soos	Marta R. Mueller	Kenneth P. Severin	Heinz Wiechen
Richard and Laura Grooters	David Klein	Franz Mueter and Susan Nachtigal	Timothy and Therese Sharp	Sue Will
Russell and Mary Lee Guthrie	Fred Klingener	Firmin and Gael Murakami	Sue Sherif	Paulette M. Wille
Glenn and Esther Hackney	Larry and Ruth Knapman	John and Laurie Murphy	Ronan and Barbara Short	Peter H. Williams
Rosemary Haffner	Albert and Toshiko Knapp	Robert and Jean Murray	June Siegrist	Frederick E. Winker
Charles Haist	Arlayne D. Knox	'Nanne Myers	Derek and Melissa Sikes	Linda and David Witt
Linda J. Hall	Keith and Velma Koontz	Roland Nail	Montie and Lynn Slusher	Sandra D. Wittenbrink
Harry and Janet Halvarson	Jerry and Donna Krier	Ree and Bill Nancarrow	Mary Beth Smetzer	Dean and Emily Worth
Jim and Barbara Hameister	Eric and Marcella Kuntz	Joseph and Alyssa Nardinger	Eric and Jaime Smith	Hiroyasu Yamaguchi
Priscilla Hamilton	Colleen Kuykendall	Robert and Pat Nelson	Steve and Jane Smith	David Yokel and Kathleen Taylor Yokel
Keith and Carolyn Hanneman	Pat Kvasnikoff	Sandra Nelson and Keith Holcomb	Wallace Smith and Patricia Dyer-Smith	William Zaccardi
George and Christine Happ	Brendan and Nettie Labelle-Hamer	David and Carolyn Nethken	D. Rebecca Snow	Judy and Howard Zach
Elizabeth Hardesty	Sandy Lachman	Brian O'Donoghue and Kate Ripley	Arnold and Patricia Snyder	Cortland and Constance Zachel
Linda S. Harding	Gerald and Elaine Laker	Lee and Russell O'Hare	Walter and Babette Sonneborn	D. Jane Zimmerman
William and Anne Harrison	Wayne and Marijo Larson	Tom and Dianne Okleasik	Vikas and Sushma Sonwalkar	
Harry Goldman Foundation	Rick and Leigh Latham	Gene and Catherine Omstead	Robert and Susan Spahn	
Richard and Gail Hattan	Molly Lee and Michael Krauss	Gareth O'Neil and Melissa Holmes	Jonathan Starr and Susan Schneider	
David R. Hayden	Patrick and Millie Lee	Bessie O'Rourke	State Farm Companies Foundation	
Victorie Heart	Victoria and Brian Leffingwell	Geoffrey Orth and Sheryl Reily	Michael and Pamela Steiger	
Merritt Helfferich and April Crosby	Charles Kennel and Ellen Lehman	Daniel and Rita Osborne	Dorothy Stella	
Susan Herman and Gary Kofinas	Chris and Claire Lehto	Albert and Vicki Parrish	Robert and Judith Sterns	
Eric Heyne and Alexandra Fitts	Mary Beth Leigh and Nathan Stewart	Lee and Linda Payne	Karen Stomberg	
Deb Hickok	Ruth and Hal Levey	Jill Pedersen	William and Margaret Stott	
Greg and Clare Hill	Angela Linn and Joshua Reuther	Alice Pennington	Jennifer Stoudenmire	
Susan Hills and Bill Rimer	Jerry Lipka and Janet Schichnes		Cynthia A. Stragier	
John Hinsvark				
Max Hoberg and Molly Manaug				

Gift levels reflect the net-tax deductible amount of contributions after subtracting the fair market value of any benefits received in exchange. Every effort has been made to ensure the accuracy of this report. Please advise the museum's development department of any corrections.

## Gifts to the Collections July 1, 2007 • June 30, 2008

The museum's collections have grown through decades of field-work and research, careful cultivation and the generosity of people whose passion for science, culture and education leads them to support the museum's mission. We are grateful to our donors for their contributions during FY08.

### Gifts to Earth Sciences

Dr. Anne Pasch, UAA Professor Emeritus . Vertebrate paleontology teaching collection

### Gifts to Education

Terry Dickey . . . . . Pair of Wooden Snowshoes

### Gifts to Entomology

Brent Mortenson . . . . . 104 partially identified ant (Formicidae) voucher specimens; in association with research on Aspen leaf miners and Aspen defenses to herbivory

Deborah Rudis . . . . . 76 unidentified insects collected in Juneau

Dr. George Ball, University of Alberta . . 37 identified groundbeetle (Carabidae) specimens.

Dr. Paul and Regula Schmid-Hempel . . Integrative Biology and Experimental Ecology, Zurich, Switzerland. 39 identified Alaskan Bumble bee specimens (Bombus spp.)

Dr. Terry Whitworth . . . . . 26 identified Blow Fly (Calliphoridae) specimens. These helped fill in many gaps in our representation of Alaskan Calliphoridae

Faith Rudebusch,  
Idaho State University . . . . . 138 voucher specimens, Sanak Island

John Hudson . . . . . 33 identified Dragonfly (Odonata) specimens

Susan Hallinan . . . . . 14 boxes of insects collected in Fairbanks

### Gifts to Ethnology & History

Anne Jones . . . . . One pair calfskin mukluks

Candace Waugaman . . . . . Cedar bark handbag with handles collected from Southeast Alaska

Craig Dorman . . . . . "Nantucket Basket" and ivory finial, made by the donor

Elizabeth Elphabelle Mumm Trust . . . 57 ethnological objects collected by Ms. Mumm between 1958-1961 in Western Alaska. The donor served as a public health nurse in the communities of Aniak, Anvik, Crooked Creek, Holy Cross, Kalskag, McGrath, Shageluk and Sleetmute.

Jane Steeves . . . . . Ethnological and historic material from Arctic Canada

Jeff Leer . . . . . One Janus-style Anaktuvuk Pass mask by Justus Mekiana, on a stand

Jim Moody . . . . . Collection of ten various historical lightbulbs

Land Washburn . . . . . Beaded baby strap made by Martha Wallace of Fort Yukon, collected by the donor's mother, Barbara, in 1936

Letitia Bowman . . . . . Various ethnographical objects collected from Southwestern Alaska by Letitia Bowman and family

Mary Cullen . . . . . Two Athabaskan smoked moosehide pillow covers made prior to 1916

Michael Krauss . . . . . Skin ball made in Siberia (village of Naukan) and given to the donor after taking the Alaska Friendship Flight in 1988

Mickey Lesley . . . . . Collection of six stereograph cards of Alaskan & Gold Rush scenes

Mike Dotson . . . . . One Winchester Model 03 .22 caliber automatic rifle formerly owned by Clyde C. "Slim" Williams

Molly Lee . . . . . Pair of dance fans and a King Island raven mask

Mrs. Gordon (Anna M.) Hill . . . . . Collection of objects obtained by Gordon Hill while posted in Alaska (Anaktuvuk Pass and Point Hope) between 1954-1958 working on the DEW Line

Walter W. Mason . . . . . Two pairs of Athabaskan footwear, collected by Marge Thera

### Gifts to Film Center

Malimiut Family . . . . . Personal 1/4 audio tapes from 1950s

Roy Dickerson . . . . . Historical footage of Alaska aviation

### Gifts to Fine Arts

Neil and Rosemarie Davis . . . . . *Jelly Fish* by Patricia Davis

Elizabeth Irving . . . . . *Harvest Season* by Elizabeth Irving

Aldona Jonaitis . . . . . *Holder* by Thomas Stream

Thu Nguyen . . . . . *Last Morning on Statendam* by Thu Nguyen

Marion Schmidt . . . . . *Portrait of a Woman Dressed as An Indian* by Sydney Laurence

Mark Shellinger and Carol Merrit . . . . *Upper Chena* by James Behlke

### Gifts to Herbarium

Yukon Department of Environment  
(Bruce Bennett) . . . . . Plant specimens from the Yukon Territory

University of Oslo (O) . . . . . R. Elven Norway collections with C. Parker 2007

Museum of Natural History and  
Archaeology, Norway (NTNU) . . . . . Isotype of *Sphagnum tescorum* Flatberg

Smithsonian Institution (US) . . . . . Specimens from the Western Brooks Range (1963-64); sedges and grasses; Sladen collection from the Pribilof Islands and St. Matthews Island

University of Michigan  
Herbarium (MICH) . . . . . Alaska specimens, including historical collections from 1948-1961

University of New Hampshire  
Herbarium (NHA) . . . . . Siberian aquatic specimens

### Gifts to Mammalogy

Alaska Department of Fish and Game . Mammal specimens

Alaska Sea Life Center . . . . . Marine mammal specimens

Alaska Zoo . . . . . Mammal specimens

National Marine Fisheries Service . . . Marine mammal specimens

North Slope Borough . . . . . Marine mammal specimens

U.S. Fish and Wildlife Service . . . . . Marine mammal specimens

U.S. Geological Survey . . . . . Marine mammal specimens

UAF Institute of Arctic Biology . . . . . Mammal specimens

Wildlife Conservation Society. . . . . Mammal specimens

### Gifts to Ornithology

Peter Bente . . . . . Bird specimens

Deb Boetcher . . . . . Bird specimens

Janet Capito . . . . . Bird specimens

Johannes Erritzoe . . . . . Bird specimens

Henry Springer . . . . . Bird specimens



*Upper Chena* by James Behlke, gift of Mark Shellinger and Carol Merrit.



## Visitor Services

The museum's retail operations – admission, auditorium shows, audio guide, Museum Store and special events – continued to grow in FY08 and generated more than \$1.6 million in revenue.

Visitation increased by 4%, finishing the fiscal year with 97,081 visitors. To capture more evening visitation, the museum expanded its summer hours to stay open until 9 p.m. (May 15 through September 15) beginning with the 2008 visitor season.

Audio guide sales and ticket sales for the museum's summer auditorium shows also increased in FY08. In May 2008, the museum changed the pricing structure for the summer auditorium shows: allowing visitors to purchase a \$5 show pass for admission to all the day's shows rather than the former à la carte pricing for individual shows.

Increased visitation by tour groups was key to the museum's increased visitation.

Summer 2008 marked the first time in more than 10 years that Holland America Line included the museum in their tour packages in addition to offering optional tours to the museum. Because the summer visitor season spans two fiscal years, the full effect of Holland America's return is not reflected in the FY08 visitation figures; however, Holland America patrons now represent the largest group of visitors to the museum.

Cruise West increased their visitation to the museum by 20% and included lunches (2007 season) and breakfasts (2008 season) as part of their museum visit. The museum's extended evening hours provided an opportunity for Princess Tours to increase their visits to the museum; the tour company tripled the number of visitors they brought to the museum on optional tours.

The Museum Store finished the year with almost \$880,000 in sales, a 14% increase from FY07. New wall display units enabled the store to better showcase its inventory of ivory carvings, Alaska Native dolls and jewelry. Overall, the store increased its inventory of Alaska Native art, Alaska-made products and museum logo products, including a new tote bag, t-shirts, pins and coffee mug. Alaska Native arts and crafts continued to account for a majority of the store's inventory (60%, up from 51% in FY07). The average per-visitor sale in the museum store remained significantly higher than the national average.

The museum hosted 47 events during the FY08 fiscal year, including nine museum lectures, two corporate partner events, nine UAF receptions, four book readings and several private receptions (including one wedding reception), in addition to the museum's major annual events – Halloween, Military Appreciation reception and family day, Sparktacular, Chocolate Bash and Fun Fest.

---

## Education continued from p. 3

lectures: *Arctic Transformations*, *Birds of the Aleutians*, *Journey Across the Changing Arctic*, *Lessons from the Plant Hunters*, *Marine Access at the Top of the World* and *Wood Heat: An Alternative to Oil?*

Saturday Family Programs remained a popular way for youth and parents to share a museum experience with hands-on activities related to the museum's research and collections. The program, which is designed for small groups, reached 151 people in FY08 through these programs: *Advanced Rocket Science*, *Archaeology: Traces from the Past*, *Fossils: Dinosaurs, Mammoths and More!*, *Star Party*, *The World of Insects* and *Winter Birds*.

Education director Laura Conner and exhibits director Wanda Chin completed the second year of National History Day training for teachers and students. The museum partnered with the US Department of Education and the Fairbanks North Star Borough School District to provide this technical training on how to improve the aesthetics and content of the students' project entries.

In August 2007, the museum collaborated with two local high school science teachers to offer a late-night event to celebrate the launch of the Phoenix mission to Mars. The event featured lectures, films, hands-on activities, a rocket-building program and a live broadcast of the launch countdown.

In May 2008, the museum hosted Polar-Palooza in Fairbanks as part of the NSF-funded national outreach tour. The event featured presentations at local schools and to the Fairbanks Rotary Club,

teacher workshops and an evening multimedia extravaganza hosted by several leading polar researchers.

The museum's Gatherings North artist-in-residence program brought four artists in to the museum to demonstrate their work for visitors: Tsimshian carver Abel Ryan and Inupiaq carver Bobby Nashookpuk for one-week residencies in July 2007; Gwich'in Athabascan beadworker Rochelle Adams during the annual military appreciation day; and Koyukon Athabascan mask maker Kathleen Carlo and Tsimshian carver Abel Ryan during the annual open house.

Staff from the education department were also heavily involved in the summer hunting and trapping exhibit, including the development of three media stations.

## University Courses

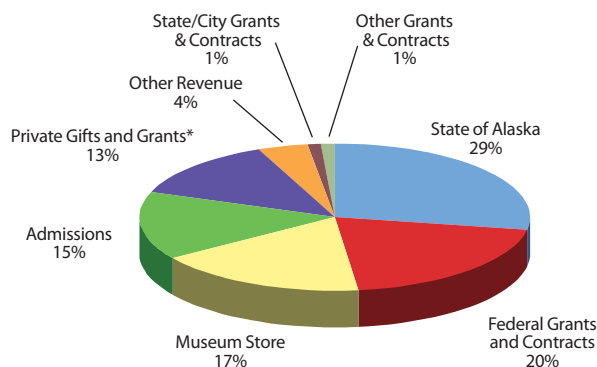
The museum's curators also serve as faculty members at the University of Alaska Fairbanks. During the FY08 fiscal year, museum curators taught the following UAF courses: BIOL 195 – Introduction to Field Entomology; BIOL 305 – Invertebrate Zoology; BIOL 331 – Systematic Botany; BIOL 426 – Ornithology; BIOL 644 – Advanced Topics in Evolution; ENGL 488 – Dramatic Writing; ENGL 688 – Writing for Film and Television; ENGL 697 – Advanced Screenwriting (Independent study); and GEOS 492 – Vertebrate Paleontology.

In addition, the museum's galleries and research collections continued to serve as a valuable resource for University of Alaska students, with more than 2,100 visiting the museum on their own and with their classes.

# Financial Summary

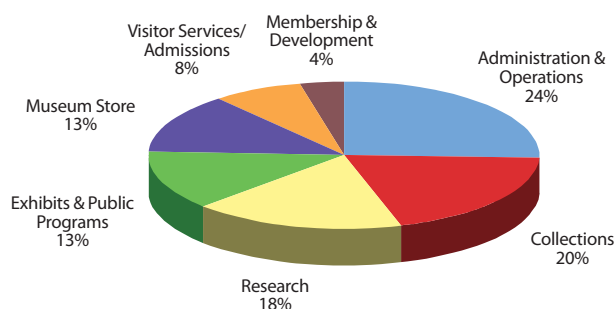
INCOME	FY08
State of Alaska	\$1,420,762
Federal Grants and Contracts	1,032,382
Museum Store	878,351
Admissions	772,169
Private Gifts & Grants*	661,663
Other Revenue	212,924
State/City Grants & Contracts	62,729
Other Grants & Contracts	50,062
<b>Total income</b>	<b>\$5,091,042</b>

\* Note: Revenue from museum memberships, bequests and other private donations are held and managed by the University of Alaska Foundation and only appear in the museum's financial summary as those funds are transferred to the museum's spending accounts. For a detailed listing of the museum's private support, please refer to the Donors of Record listing on page 12.



EXPENSE	FY08
Administration & Operations	\$1,302,843
Collections	1,009,693
Research	904,215
Exhibits & Public Programs	663,834
Museum Store	663,155
Visitor Services/Admissions	387,112
Membership & Development	185,690
<b>Total expenses</b>	<b>\$5,116,542</b>

The museum's FY08 deficit of \$25,500 is due to salary adjustments for several staff positions implemented by the UA statewide system late in the fiscal year.



## Grants & Contracts\* July 1, 2007 – June 30, 2008

### Alaska Department of Fish and Game

Phylogeography of Alaska's enigmatic hoary marmots (Olson)	\$150,000
--	-----------

### Alaska State Council on the Arts

"Strange and Sacred Noise – A Film Project" (Kamerling)	\$9,000
---	---------

### City of Fairbanks Hotel-Motel Tax Fund, re-grant by the Fairbanks Arts Association

Special Exhibits & Gatherings North (Chin)	\$5,883
--	---------

### National Park Service

Curation & Storage of Denali Park Ungulate Kill Specimens (Olson)	\$5,288
Determine the Taxonomic Status of the Listed Threatened Navajo Sedge (Murray)	\$4,000
The Maiyumerak Village Data Recovery Project (Odess)	\$31,284
Vascular & Non-Vascular Plant Specimen Identification & Curation for Southwest Alaska Network (Parker)	\$ 11,750

### National Science Foundation

BRC Supplement High Density Storage System (Ickert-Bond).	\$25,031
Ornithology Collection Improvement Project (Phase I), Museum of Vertebrate Zoology, University of California, Berkeley (Jarrell)	\$23,556
REU Supplement – Critical Expansion Needs (Olson)	\$6,523
REU Supplement – Treeshrew (Olson)	\$6,196

### National Oceanographic and Atmospheric Administration/ National Marine Fisheries Service

Improvements to Marine Mammal Data and Specimen Archives (Jarrell)	\$100,000
--	-----------

### University of Alaska Statewide Office of Academic Affairs with funding from BP and ConocoPhillips

"Hunting and Trapping: Our Stories, Our Lives" (Linn)	\$20,000
---	----------

### University of California Berkeley

Ornithological Collection Improvement Project (Phase I), Museum of Vertebrate Zoology, University of California, Berkeley (Jarrell)	\$23,555
---	----------

### US Fish & Wildlife Service

Identify Arctic National Wildlife Refuge Plant Specimens (Parker)	\$1,500
Identify Kanuti NWR Plant Specimens (Parker)	\$2,250
Identify Plant Specimens Kodiak National Wildlife Refuge 2006 & 2007 (Parker)	\$12,000
Plant Identification - Icy Bay (Parker)	\$1,500
Rehouse Bear Cave Collection (Whitney)	\$4,000
Survey of Aleutian Islands Arthropods (Sikes)	\$10,125
Unimak Island Collections Curation Project (Whitney)	\$5,400

### US Forest Service

Chugach Identify Plants - 2008 (Parker)	\$2,475
---	---------

### Rasmuson Foundation

Art Acquisition Initiative (Jonaitis, Lee, Nacke)	\$34,900
• Rochelle Adams – beaded moosehide cell phone cover	
• Rachelle Dowdy – <i>Baby Raven in Nails 1</i>	
• Rachelle Dowdy – <i>Baby Raven in Nails 2</i>	
• Rachelle Dowdy – <i>Baby Raven in Nails 3</i>	
• Raymond Dutchman – wooden loon mask	
• Carol Gelvin-Reymiller – <i>Three Frosty Nights at Moose Camp with Big Moon</i>	
• Sandy Gillespie – <i>Bone Song</i>	
• Mary Jane Derendoff – beaded checkbook cover	
• Erica Lord – <i>Silence</i>	
• John McIntyre – <i>Issiisaayuk Mask</i>	
• Judy Redfox – coiled grass basket	
• Lena Sanford – two Athabaskan dolls	
• Glen Simpson – <i>Raven Rattle</i>	
• Donald Varnell – <i>Logic Board</i>	

\* This list reflects new grants and contracts awarded during the FY08 fiscal year only. It does not include multi-year grants or contracts awarded in previous years.



## Research Associates and Affiliates

### Alaska Center for Documentary Film

John Luther Adams

### Aquatics

Nora Foster

### Archaeology

Claire Alix  
Julie Esdale  
Caroline Funk  
Erica Hill  
Jeff Rasic  
Howard Smith

### Earth Science

William A. Clemens  
Joseph Paine Dudley  
Anthony R. Fiorillo  
R. Dale Guthrie  
Paul J. McCarthy  
Dave Norton  
Thomas Hewitt Rich  
John E. Storer

### Education

Michelle Bartlett  
Neal Brown  
Herminia  
Wei-hsin Din  
Timothy P. Doran

### Entomology

David Guinn  
James Kruse  
Alberto Pantoja  
Kenelm W. Philip

### Ethnology & History

Ann Fienup-Riordan  
Hiroko Ikuta  
Steve Jacobson  
Lawrence Kaplan  
Michael Krauss  
Patricia Partnow  
Katrin Simon  
Glen Simpson  
Candy Waugaman

### Fine Arts

Mary Goodwin  
Charles Mason  
Kesler Woodward

### Herbarium

Richard Bond  
W. Scott Armbruster  
Reidar Elven  
Sarah Fowell  
Gary Laursen  
Robert Lipkin  
Cynthia R. Meyers  
Barbara Murray

Carl Roland  
Leslie A. Viereck

Donald Walker

### Mammalogy

Joseph A. Cook  
Kimberlee Beckmen  
John Burns  
Nikolai Dokuchaev  
Heikki Henttonen  
Stephen O.  
MacDonald  
Thomas McDonough

Lori Quakenbush

Amy Runk  
Eric Sargis  
Gay Sheffield  
Marcelo Weksler  
Jack Whitman

### Ornithology

Thomas Braile  
Johannes Erritzoe  
Kevin McCracken  
Rose Meier  
Christin Pruett  
Heinrich Springer

## Students

### Archaeology

Matthew Balazs  
Fawn Carter  
Crystal Glassburn  
Chris Houlette, B.S.  
Heidi Kristenson  
Uyoyou Ogbe  
Dawn Planas  
Rachel Powers  
Aimee Tunks  
Kelsey Vallejos  
Michelle Vieira, B.A.

### Education

Mareca Guthrie  
Beau McBrien  
Kendra Heather Sinclair

### Entomology

Brandi Fleshman, B.S.  
Joey Slowik

### Exhibition & Design

James Stugart  
Nicholas Toye

### Film Center

Justice Humphrey, M.F.A.  
Jamason Klagman, M.F.A.  
Katrin Simon M.A.

### Herbarium

Amy Carol  
Rose Farrington  
Sayuri Ito  
Zachary Meyers, B.S.  
Celia Miller  
Nicole Swensgard

### Mammalogy

Josie Bonham  
Heather Bryant  
Rhiannon Ellingson  
Charlene Fortner, B.S.  
Aren Gunderson, M.S.  
Iris Harshorn  
Kyndall Hildebrandt  
Hayley Lanier  
Elizabeth Miller  
Sarah Moore  
Sonia Peterson  
Sumy Sekine  
Kirsten Woodard

### Ornithology

Kyle Campbell  
Alex Grantham  
Elizabeth Humphries  
Michael Lelevier, M.S.  
Matthew Miller, Ph.D.  
Jason Minne  
Carrie Topp, M.S.  
Jack Withrow

*FY08 graduates are indicated by the degree received after their names.*

## Volunteers

### Acquisition Committee

Kesler Woodward  
Phyllis Movius  
Glen Simpson

### Archaeology

Steve Lanford (11)  
Tim Williams (5)

### Earth Sciences

Will Hutto

### Education

Kristin Adam  
Maite Agopian  
Liz Allen  
Alicia Andrus  
Sergei Avdonin  
Kelly Balcarczyk  
Tom Baring

Maggie Billington (3)

Caitlin Birkholz

Ed Callaghan (7)

Pat Cariati (3)

Anne Castle (3)

Joy Cook

Al Cox

Leigh Anne Cox (2)

Anna Dale

Kathy Dubbs

Gathoni Egger

Quinn Evenson

Anna Fath (2)

Virginia Gallagher

Sandra Giddings

Mary Goodwin

Barbara Gorman (10)

Jack Grandfield (7)

Somer Hahm

Marcella Hill (8)

Gretchen

Hundertmark

Edna Jimenez

Janet Johnson

Patricia D. Johnson (3)

Albert Knapp (11)

Emily Koehler-

Platten

Caryn McElroy

Mary Ann Nickles

Patti Picha

Luke Port

Marceline Post

Joyce M. Potter (7)

Kathryn Richardson

Donna Rohwer

Adrienne Smith

Adele Solski

Dorothy Stella (5)

Mikael Stovarsky

Leslie Swenson (2)

Terry Tomczak

Linda Toth

Tumi Traustason

Cindy Triebel

Lesli Walls

Avalon Wappett (3)

### Entomology

Dominique Collet

Melissa Deiman

Brandi Fleshman (3)

Kelly May

Katelyn McDonald

Holly Midkiff

Kevin Wakeman

### Ethnology & History

Rhonda Klistoff  
Steve Linn  
Micole Van Walbeek

### Exhibition & Design

Pierre Chin-Dickey  
Barbara Doogan  
JanLee Irving  
Lucy McCarthy  
Barry McWayne  
Grace Schaible  
Tara Shideler

### Fine Arts

Heather Neal  
Kasvinsky (2)  
Barry McWayne (2)  
Anne Marie Nacke (2)

### Film Center

Owen Funk  
Ira Hardy  
Katrin Simon

### Herbarium

Katie Levings (2)  
Lilly Lewis

### Mammals

Sargis Eric (2)  
Jonathan Fiely  
Woodman Neal  
Maia Peirce (3)  
Kaley Sikes

### Ornithology

Robert W.  
Dickerman (20)  
Elizabeth  
Humphries (3)

Michael Lelevier (3)  
Michael Schwitters (3)  
David Sonneborn (7)

(#) For volunteers with more than one year of volunteer service to the museum, the number in parentheses indicates total years of service.

## Staff Retirements



Barry McWayne

**Molly Lee** retired in May 2008 after serving as the museum's curator of ethnology and history and as a faculty member in UAF's anthropology department since 1995. During her time at the museum, Molly forged long-lasting relationships with Alaska's Native community, both through her research on Alaska Native baskets and through her "open door" policy for the research collection. She welcomed beadworkers, skinsewers and other artists to look at the collection for inspiration and invited Alaska Native elders to view the collections and share their stories. She served on several national and regional boards, including Doyon's art acquisition committee. Molly continues to serve on the museum's acquisition committee.

After more than 40 years at the museum, bird collection manager **Dan Gibson** retired in June 2008. Before coming to Alaska, Dan worked with legendary Smithsonian ornithologist Roxie Laybourne. He started working at the museum in 1965 as a student in what was then the terrestrial vertebrate collection and joined the staff full-time in 1970. His research has focused on the distribution and geographic variation of birds in Alaska. He also served as the Alaska regional editor of *Audubon Field Notes/American Birds* and associate editor of *Western Birds*. Dan continues his relationship with the museum as a Research Associate and volunteer.



Barry McWayne

UNIVERSITY OF ALASKA



UNIVERSITY OF ALASKA FAIRBANKS  
PO BOX 756960 • FAIRBANKS, AK 99775

Address Service Requested

The University of Alaska Museum of the North's FY08 annual report is published with support from:

