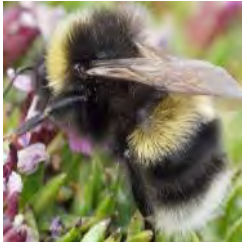


Make a Bee Mask and Colorful Flower

Explore pollinators by making a bee and flower craft!



Pollinators move pollen from one flower to another of the same species. This fertilizes the plant and produces fruit and seeds. In Alaska, bumble bees are one important group of pollinators.

Left: Cryptic Bumble Bee (*Bombus cryptarum*). NPS photo by Scott King.

Materials Needed:

Bee Mask: Bee Mask Printable (or draw your own), scissors, glue, crayons or colored pencils, yarn. *Optional:* Hole punch.

Flower: Coffee filter, washable markers, water, paper towels, scissors, pipe cleaner, pom-pom, glue.

Instructions

Make a Bee Mask

Step 1: Color the mask template. Make it look realistic, or use your imagination!

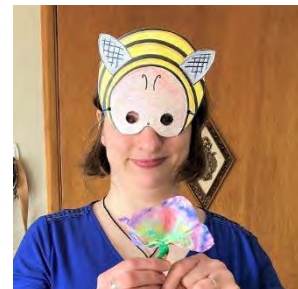
Hint: Glue the mask template to cardstock to make it sturdier.

Step 2: Cut out the mask. Hold it to your face to check the placement of the eye holes. Cut the holes to the correct size.

Step 3: Cut out the wing pieces and glue them to the mask.

Step 4: Use scissors or a hole punch to make a small hole on each side of the mask. Tie a piece of yarn through each hole.

Step 5: Tie the yarn behind your head to wear your mask! Adjust the yarn length if needed.



Create a Colorful Paper Flower

Step 1: Use washable markers to color a coffee filter. Be creative: try different colors, patterns, and designs!

Step 2: Place the coffee filter on a paper towel. Use a spray bottle to mist with water, and watch the colors blend! Let dry for about 15 minutes.



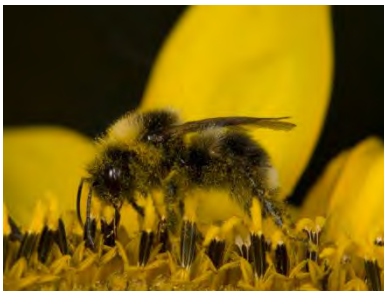
Step 3: Once the filter is dry, fold it into eighths and trim the edges in a round or pointed shape.

Step 4: Twist the end of the folded filter, and wrap a pipe cleaner around the end. This will be the stem.

Step 5: Gently separate the layers of the filter. Spread them out to form petals. Glue a pom-pom in the middle to represent pollen.



Bumble Bees: Super Pollinators



Bumble bee covered in pollen.

Image: Derek Sikes.

There are 22 species of bumble bees in Alaska. They live in a variety of habitats and are pollinators of wildflowers, willows, blueberries, and cranberries. Since many animals rely on these pollinated plants for food, shelter, and medicine, bumble bees are essential members of Alaskan ecosystems.

Bumble bees live in nests with a few hundred fellow bees (unlike honey bees, who live in large hives). They are well-adapted to colder climates due to their large body size, thick “fur,” and ability to shiver their flight muscles to regulate body heat.

Learn more about bumble bees of Alaska:

www.nps.gov/articles/000/alaska-bees.htm

Bee Mask Printable

