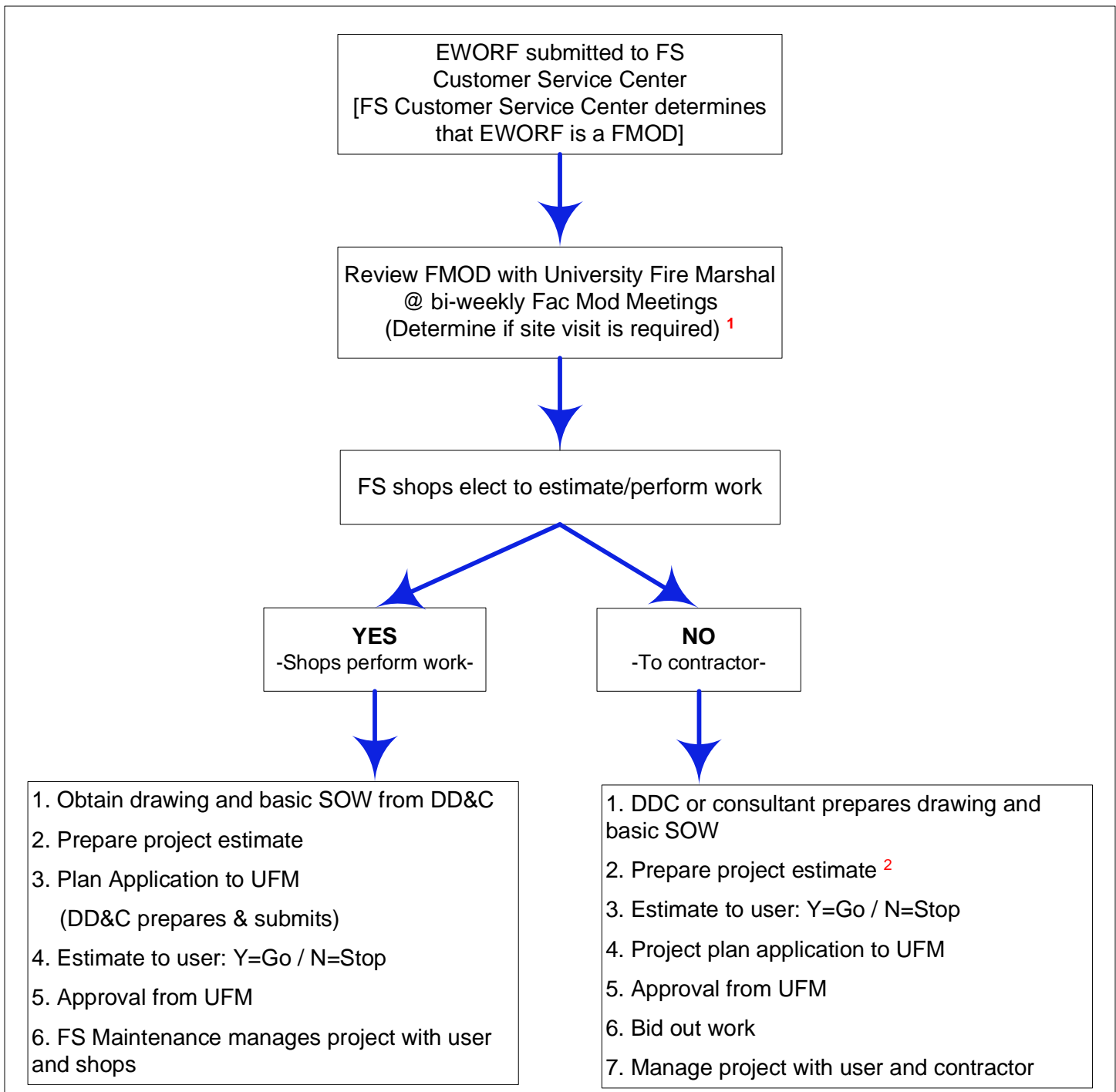


UAF Facilities Services Facility Modification Flow Plan

January 11, 2010

An EWORF becomes a Fac Mod if any one of the following is indicated:
change in size/shape/access, change in use, change in assignment.



Acronym Key:

UFM = University Fire Marshal
EWORF = Electronic Work Order Form
FMOD/Fac Mod = Facility Modification
SOW = Scope of Work
FS = Facilities Services
DDC = Division of Design & Construction (Facilities Services)

1. If site visit is required, FE's, Maint. Supervisor & UFM to attend.
2. Verbal = rough estimate, 'order of magnitude'
Written estimate requires user funds.

