



CAMPUS SNOW REMOVAL

DARRIN “BEAR” EDSON
AND CREW



Meet the team:

NIGHT EQUIPMENT CREW:

NATHAN - LEAD OPERATOR

CASEY - OPERATOR

JOSHUA - OPERATOR

DAY EQUIPMENT CREW:

IAN - LEAD OPERATOR

JAMIE - OPERATOR

TERRY - OPERATOR

AMBER - SMALL EQUIPMENT OPERATOR

ROCKY - LEAD LABORER & SMALL
EQUIPMENT OPERATOR

SAND TRUCK:

TED - LABORER

INDOOR PLANTS:

MARTINA - STUDENT ASSISTANT

LOWER CAMPUS TEAM:

JORDAN - GROUNDS

RAY - LABORER

MANNY - LABORER

DAVID - STUDENT ASSISTANT

JUSTIN - HIGH SCHOOL INTERN

EMERY - HIGH SCHOOL INTERN

MAHALA - STUDENT ASSISTANT

MATTHEW - STUDENT ASSISTANT

NORTH CAMPUS TEAM:

RAIF - LEAD FOR GROUNDS

CALEB - LABORER

DAVID - STUDENT ASSISTANT

COLEMAN - CASUAL TEMP

ISSAC - STUDENT ASSISTANT

SKI TRAILS:

JASON - GROOMER

CAMPUS EVENTS: PAUL - SEASONAL

CAMPUS ADA ACCESS: OPEN - SEASONAL

COAL ASH DRIVER: OPEN - SEASONAL

OFF CAMPUS PROPERTIES: DANIEL - SEASONAL



SNOW IS FALLING.....

How will UAF Grounds crew respond?





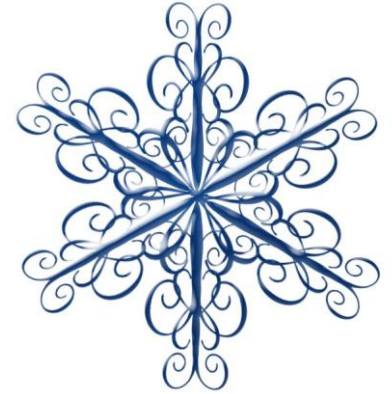
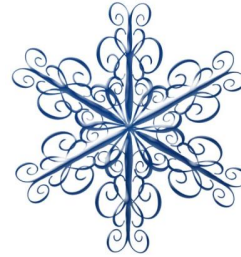
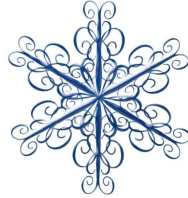
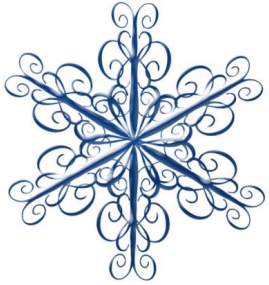
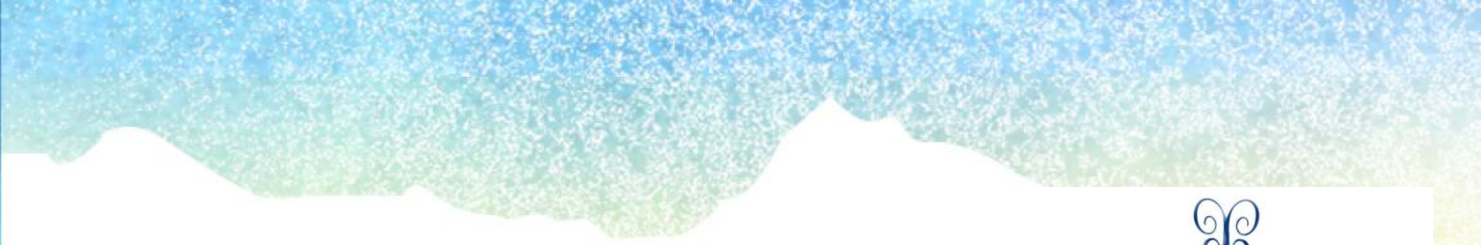
WHAT THE UAF GROUNDS CREW MAINTAINS:

QUICK FACTS:

Just 6 inches of snow on only our parking lots equals 71,114 cubic yards of snow.
That is 4,740 dump trucks full of snow!!

Every year we go through 400 tons of traction sand for roads, parking lots and walkways!

- 10.52 miles of Walkways
- 7.7 miles of Roads
- 87 Exterior trash cans serviced daily
- 1,920,094 sq. ft. of parking lots
- 2,937 individual steps on exterior stairs
- 29 building access ADA ramps
- 148 Walkway handicap access points
- 22 Emergency phone sites
- 78 Dumpsters serviced daily
- 55 Crosswalks
- 66 benches
- Over 20 miles of ski trails



**Our work day
actually begins
9 P.M. at night.....**





NIGHT CREW (CREW OF THREE)

9:00PM - 5:30AM

NATHAN

- CLEAR CAMPUS ENTRANCES
- CLEAR 1ST PRIORITY ENTRANCES
- CLEAR 1ST PRIORITY ROADS

CASEY

- CLEAR CAMPUS CORE PARKING LOTS (DAILY)
- CLEAR ASSIGNED LOTS (WEEKLY)

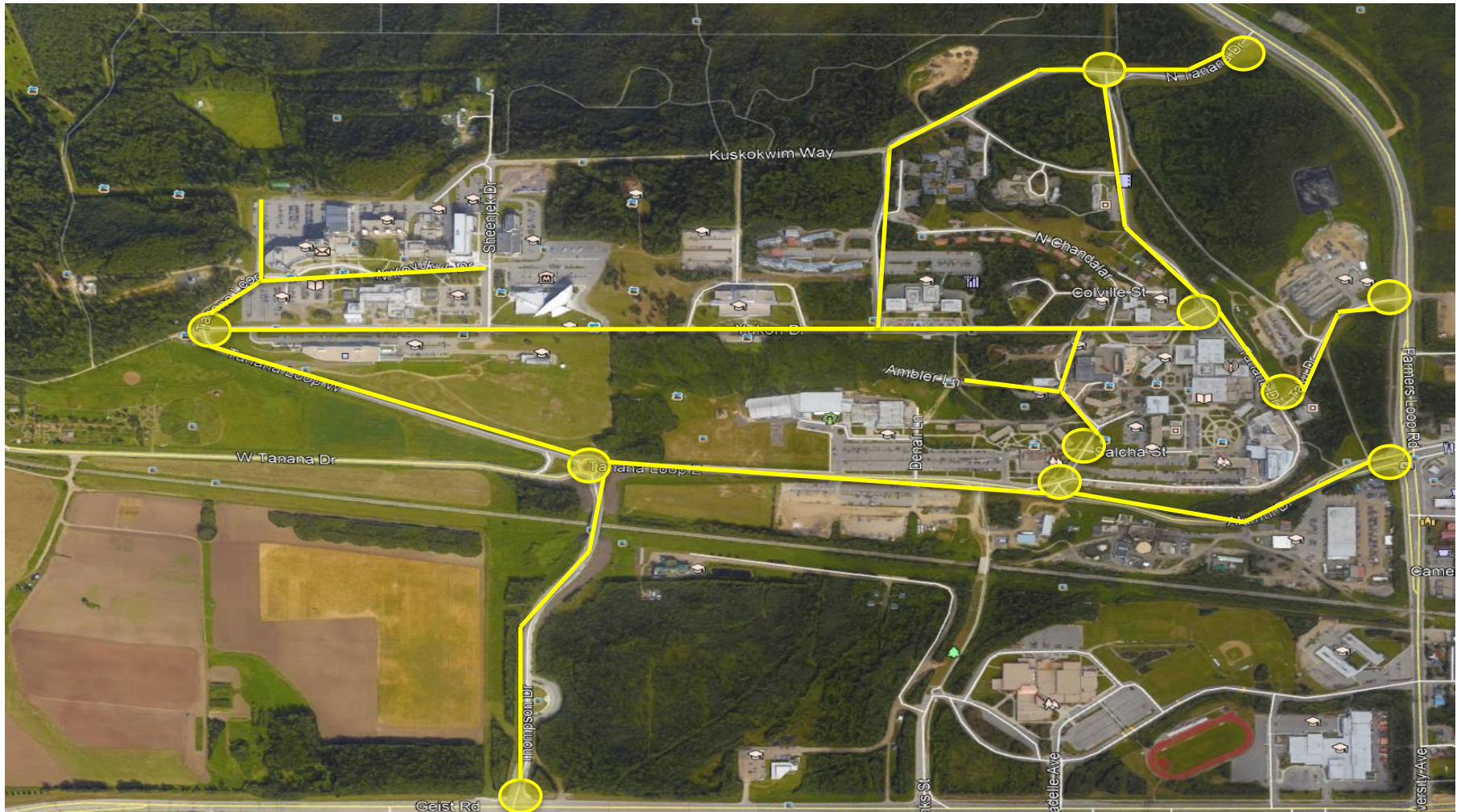


JOSHUA

- CLEAR **ADA** PARKING SPACES
- CLEAR CIRCLE OF FLAGS CORE WALKWAYS
- CLEAR LOLA TILLY → GEIST RD. WALKWAYS
- ASSIST WITH PARKING LOTS

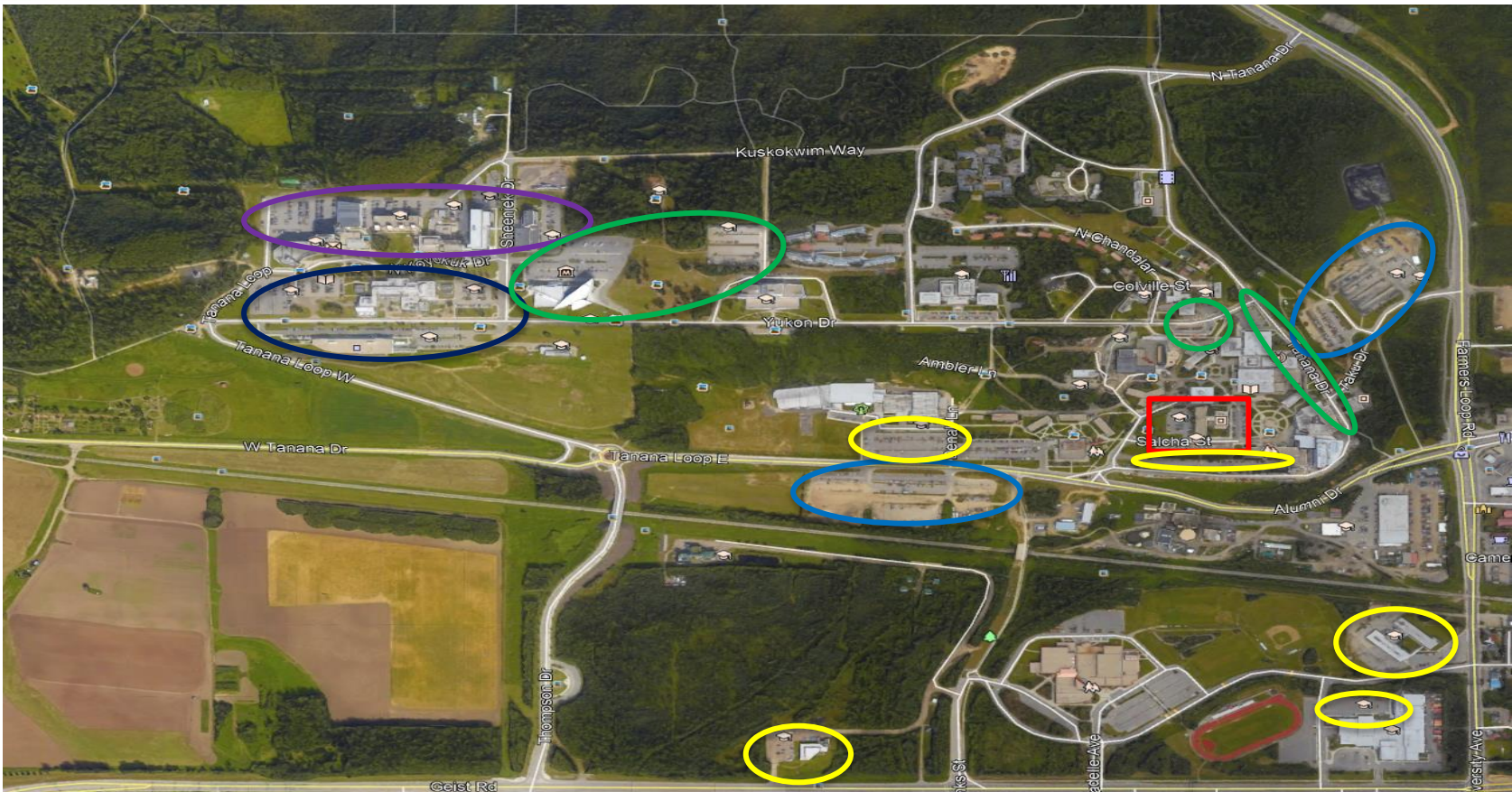


NIGHT CREW OPERATOR: NATHAN'S RESPONSIBILITIES





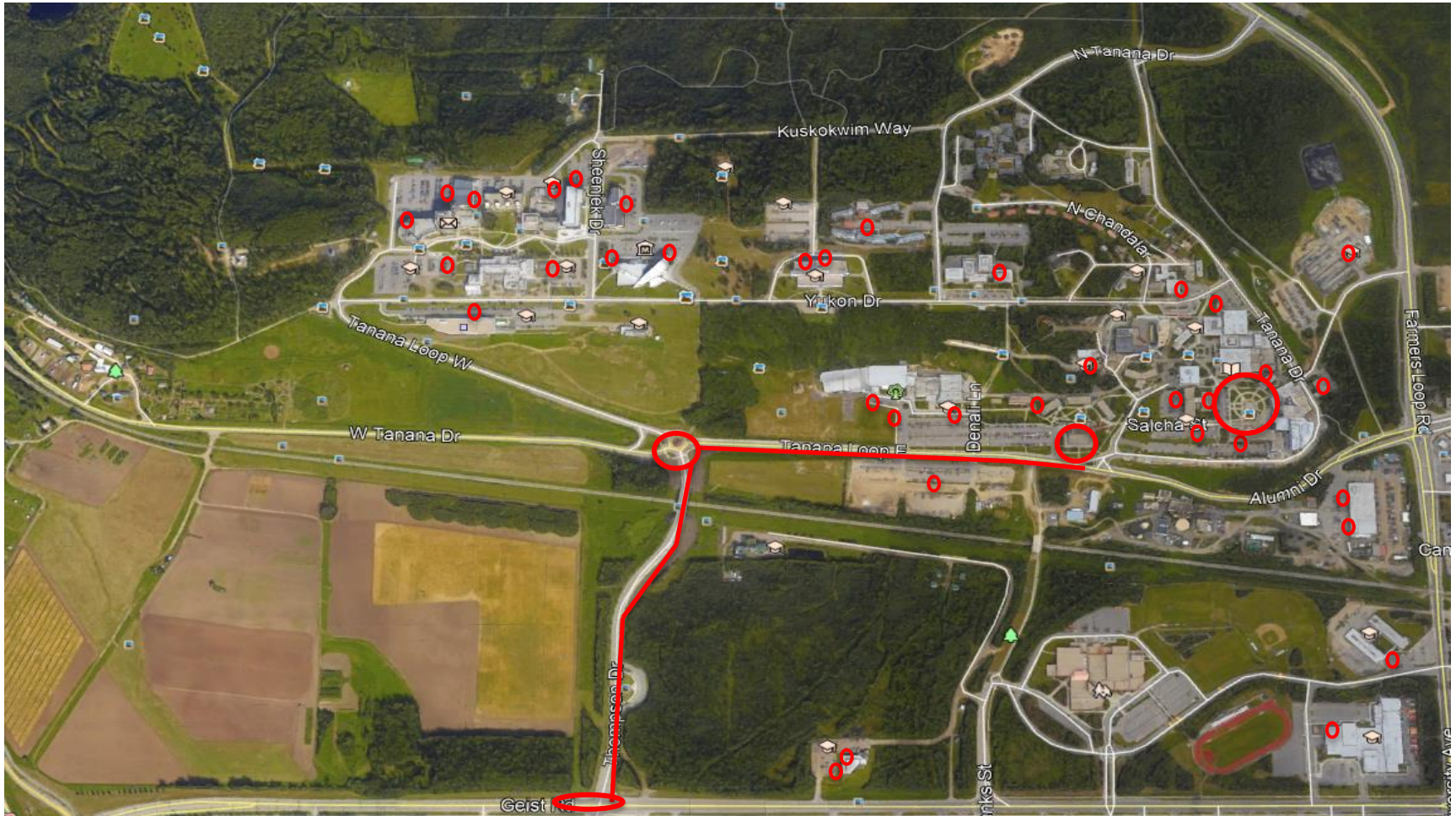
NIGHT CREW OPERATOR: CASEY'S RESPONSIBILITIES



RED- Daily **BLUE**- Sunday night **DARK BLUE**- Monday night **PURPLE**- Tuesday night
GREEN- Wednesday night **YELLOW**- Thursday night



NIGHT CREW OPERATOR: JOSHUA'S RESPONSIBILITIES



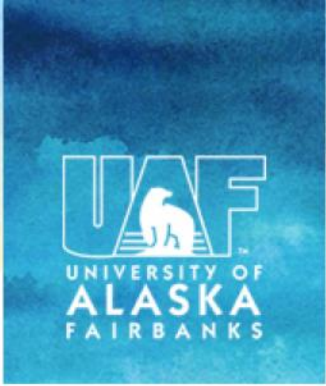


5:00 A.M. (CREW OF ONE)

Trail Groomer, Jason

Arrives to begin ski trail maintenance





DAY CREW

6:00AM - 3:30PM

Crew:

11 Full time

8 Students

4 Seasonal

TASKS INCLUDE CLEARING:

ADA ACCESS POINTS AND RAMPS

BUILDING ENTRANCES & EXITS

STAIRWAYS AND WALKWAYS

ALSO

EMPTYING EXTERIOR TRASH CANS

RESPONDING TO SLIPS, TRIPS, OR FALLS

CAMPUS REFUSE COLLECTION

COAL ASH DISPOSAL



6:00 A.M.

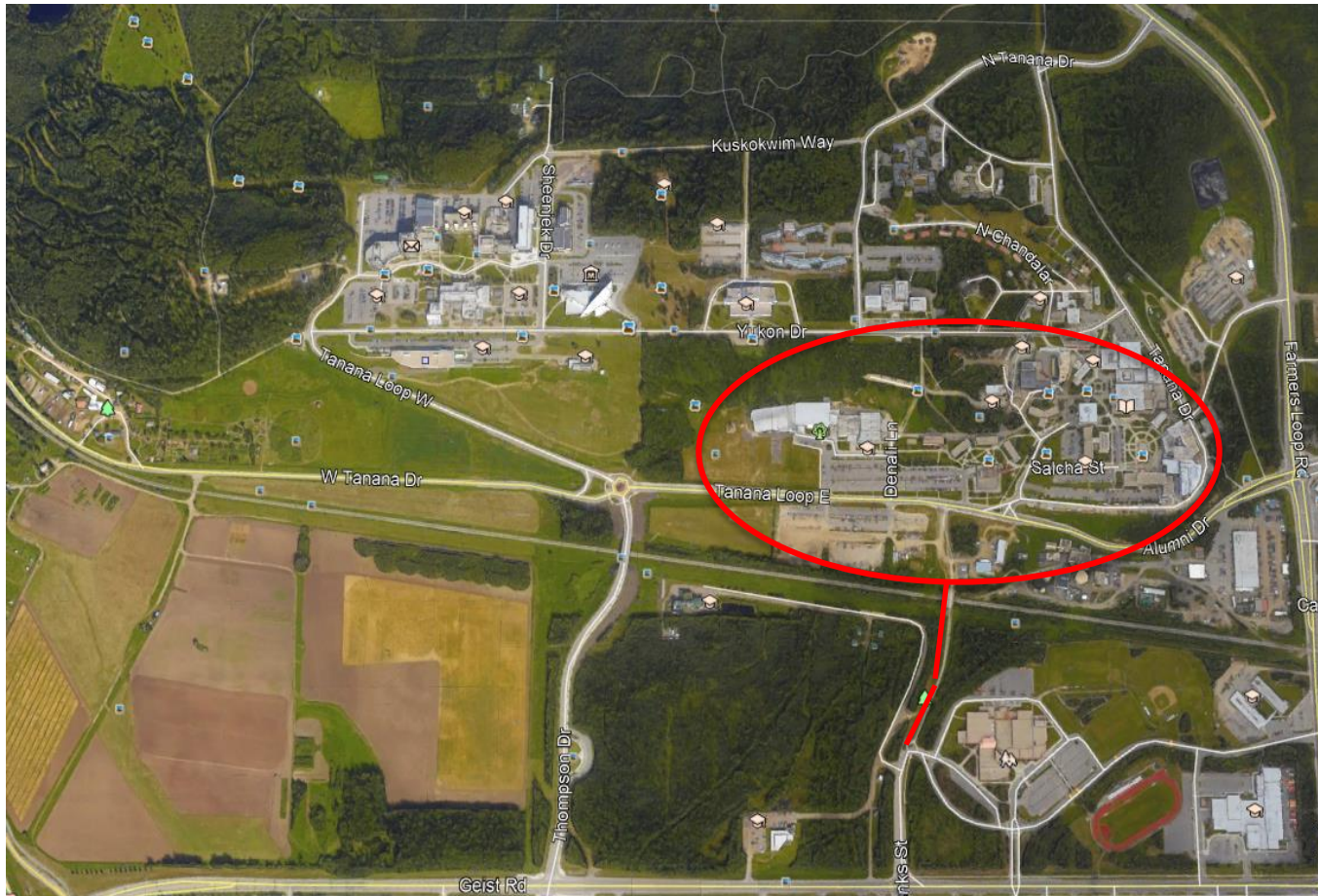
- Operator Jamie begins campus refuse collection
- Operator Terry begins hauling ash from the Power Plant





7:00 A.M.

Amber arrives to sweep **all**
walkways south of Yukon Drive





7:00 A.M.

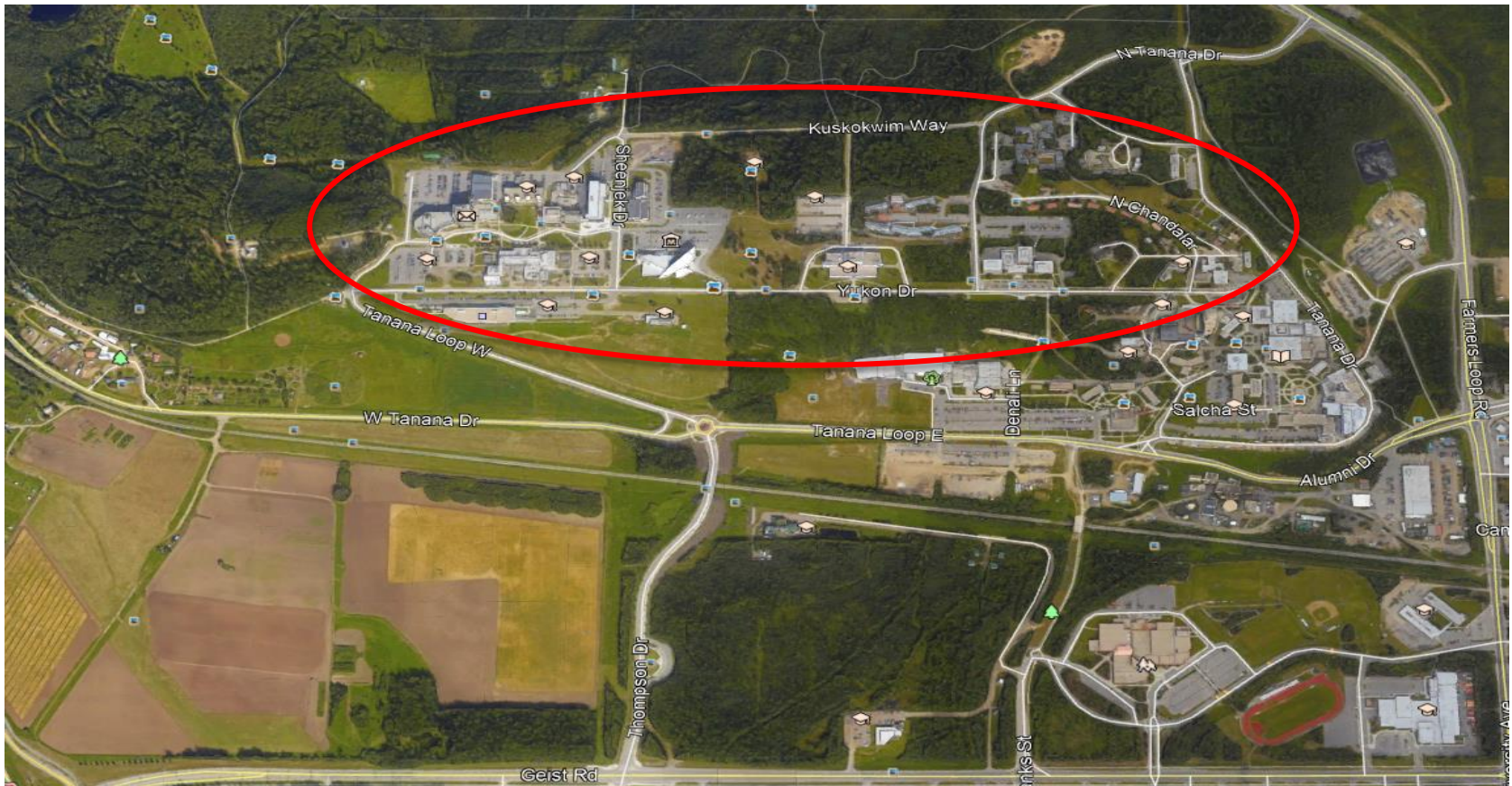
ROCKY ARRIVES TO SWEEP **ALL** **WALKWAYS** NORTH OF YUKON DRIVE (AND BUTROVICH)





7:00 A.M.

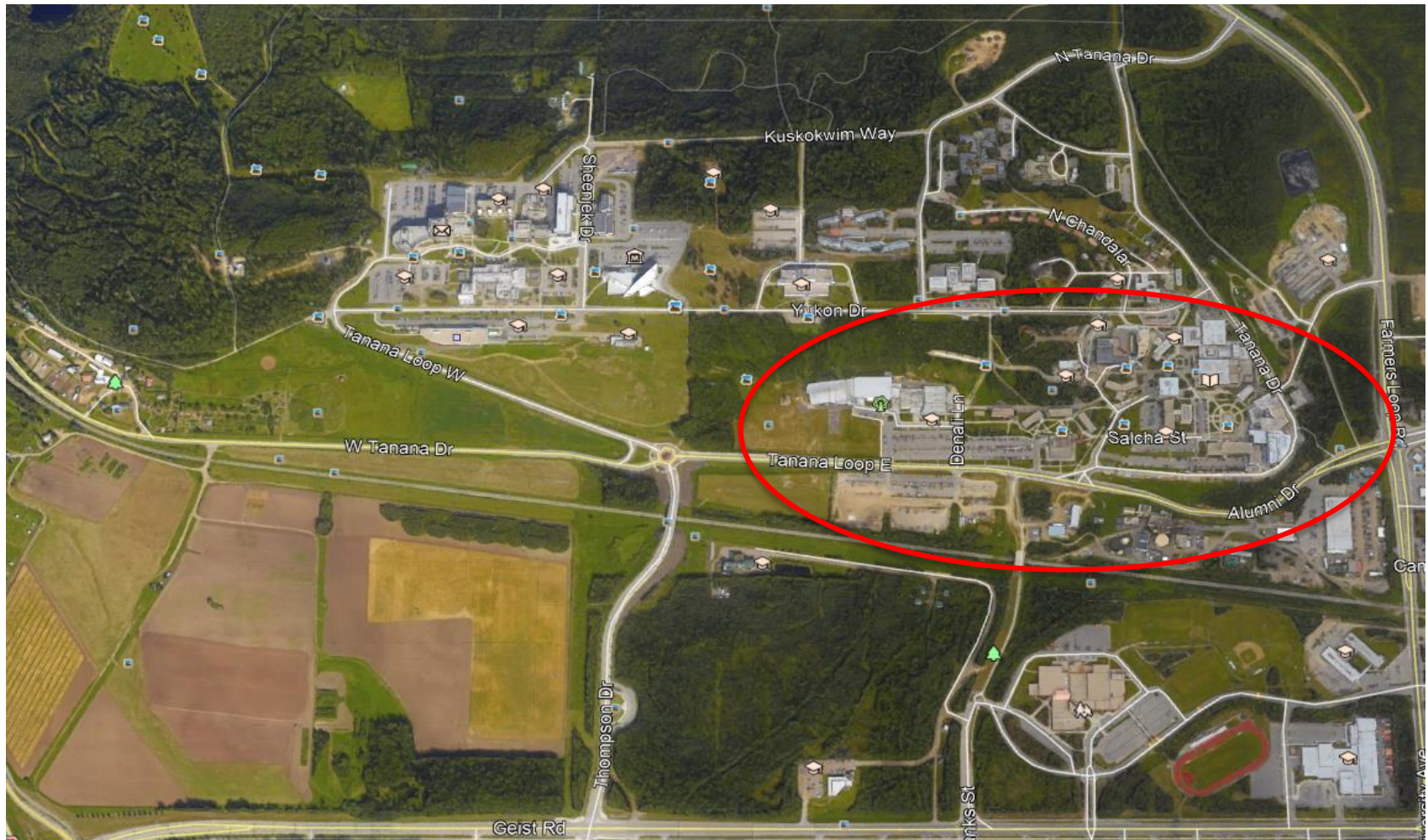
Raif and a crew of 3 part-time students begin clearing **building entrances, stairs, and ADA ramps** north of Yukon Drive





7:00 A.M.

Jordan and a crew of 5 part-time students begin clearing **building entrances, stairs, and ADA ramps** south of Yukon Drive





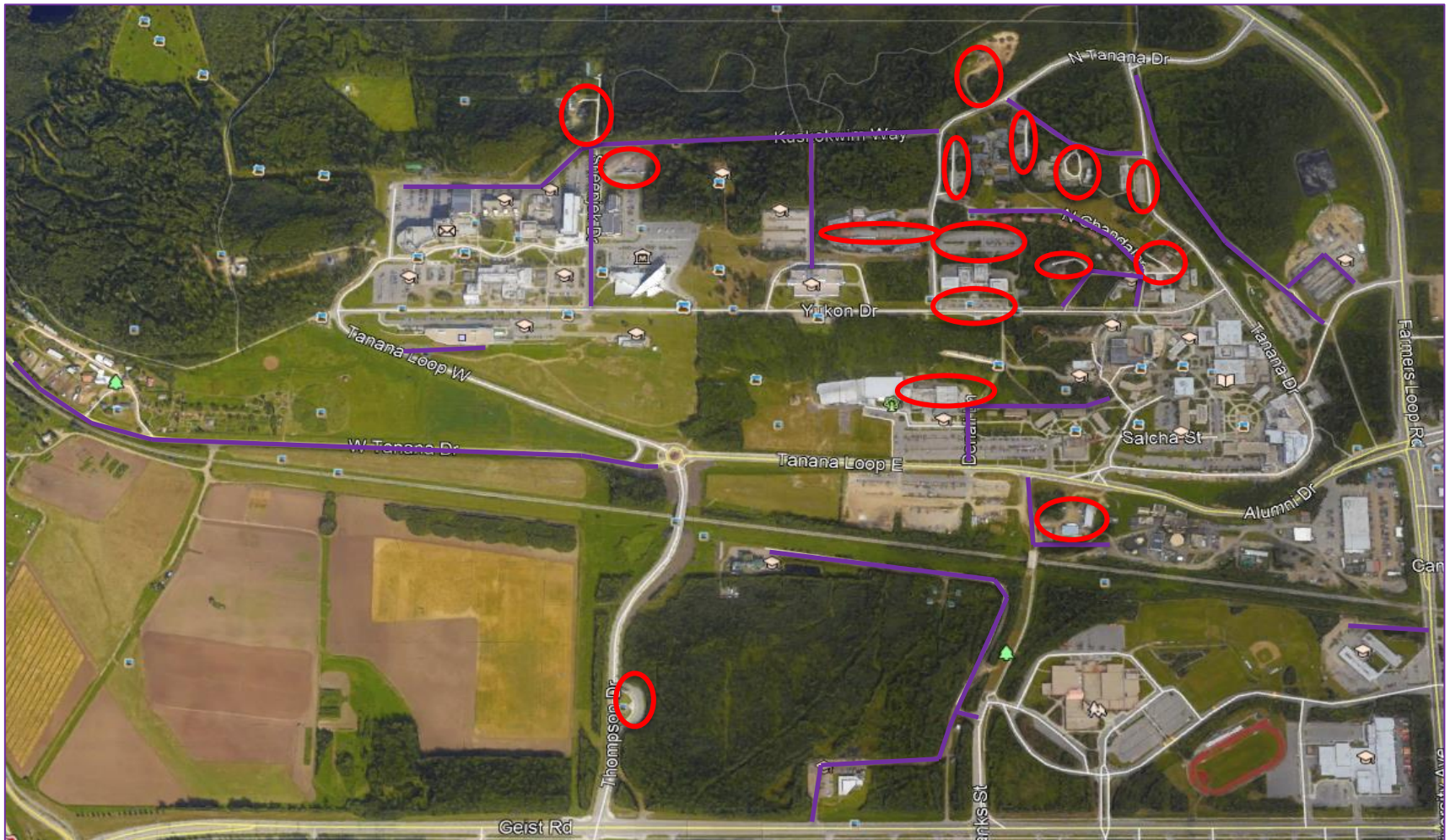
LABOR CREW ADDRESSES HIGH TRAFFIC AREAS BEFORE MOVING ON TO ASSIGNED LABOR TASKS





7:00 A.M.

Ian begins clearing secondary roads and assigned parking lots





7:00 A.M.

Daniel begins clearing off-campus locations

- Westwood Way
- U Park
- CTC Barnette
- Downtown Parking Garage
- Aurora Building
- Admin Services
- OEM
- CTC Aviation Hanger
- Ski Boot Hill/KUAC transmitter site





ADDITIONAL TASKS & HELP

Winter Seasonal Events Hire:

Campus events and weekend coverage . Ensures campus event locations are serviced and safe. Provides weekend sanding coverage as well as operating the plow truck.



Winter Hire: ADA access

This position has the responsibility of ensuring our ADA access routes are clear as well as ensuring headbolts, railings, and door openers can be reached easily.

Plow Truck Route:

Covers weekly service to:

- Off-campus properties
- Parking lots
- Miles of bike trails around campus





100% SNOW / HARDPACK REMOVAL

- 100% clearing of snow and hardpack from campus parking lots occurs over the winter holiday break & spring break.
- Lots will be posted with dates and times of cleaning, remaining vehicles are towed from the lots at the owner's expense if not removed by posted time.



Parking Services requires that Residential lots be posted at least (48) hours before clearing and (24) hours prior to clearing Academic lots.





HEAVY SNOW EVENTS (+8" OF SNOW)



24 hour, 7 day a week clearing begins until we have the campus safe, open for business, and the snow event is cleaned up.



WHO TO CALL?

474-7000



24 hours a day 365 days a year
to report slips, trips, or falls.

Also, call for any snow removal needs you
may have.





FAQ

What is a snow dump?

A snow dump is a location we deposit and store large amount of snow. This practice allows us to remove the snow from the parking lots. When choosing snow dump locations, we look for area that will allow for bio filtration to help with melt and run off.

Why do you tow vehicles?

The most efficient way to clean a parking lot is with no obstacles to work around. Having the parking lot empty allows us to do our job quickly and move on to the next. **Vehicles are only towed from posted lots, and not until the posted date and time.**

Why do you pile snow in parking spaces of lots?

During a snow event, our job is to clear as many square feet of parking surface as possible. From time to time we will pick a corner of a lot and use it as a temporary snow dump. Although this takes up a couple spaces, it allows us to clear hundreds of other spaces in the time it would take to haul the snow off. We will come back and haul the piles off, once we get caught up from the snow event.