



Financial Managers' Meeting

October 28, 2014

- **Safety Minute**

- Emergency Procedures
- Protection of Minors (two trainings) – Before Dec 31



- **ANNOUNCEMENTS**

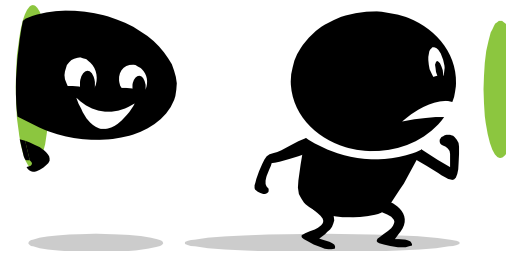
- TEM Updates
- OMB Activities
- 9210/9222 Balancing
- Management Reporting (October close 11/5, due 11/11)



- **September Management report**
 - UFB Projection for September 2013 was \$3.0M

Fund 1 Unreserved Fund Balance

CABINET	FY13 Actual	FY14 Actual	FY15 Sep Projection
Chancellor	17,043	86,025	137,372
eLearning	(202,107)	(16,147)	(0)
OIT	120,646	59,846	65,622
Provost	2,168,476	1,041,426	1,347,345
VC RCNE	1,286,730	1,037,700	356,194
VC Research	1,462,829	1,771,265	1,121,737
VC USA	390,910	84,376	(115,464)
VC AS	540,572	699,613	619,893
Central Support	2,734,543	1,759,564	1,288,461
Total	8,519,642	6,523,669	4,821,162



CABINET	FY15 Actual Net Student Tuition & Fees at Cycle 03	FY14 Actual Net Student Tuition & Fees at Cycle 03	FY15 Projected Student Tuition & Fees	FY14 Actual Year End Student Tuition & Fees	Cycle 03 Change FY14 to FY15	Year End Change FY14 to FY15
Chancellor	1,369,942	896,398	2,820,804	2,330,897	52.8%	21.0%
Provost	8,850,077	8,065,701	18,399,008	16,919,142	9.7%	8.7%
UAF Office Information Technology	263,266	172,108	630,000	369,402	53.0%	70.5%
VC Rural, Community & Native Educ	4,699,434	4,798,693	11,632,322	10,195,102	-2.1%	14.1%
VC University & Student Advancement	4,955,844	4,863,622	6,630,506	6,347,771	1.9%	4.5%
Vice Chancellor for Admin. Services	847,369	835,790	1,078,100	1,079,314	1.4%	-0.1%
Vice Chancellor for Research				14,606		
Grand Total	20,985,932	19,632,312	41,190,740	37,256,234	6.9%	10.6%



CABINET	FY15 Actual Indirect Cost Recovery Cycle 03	FY14 Actual Indirect Cost Recovery Cycle 03	FY15 Projected Indirect Cost Recovery	FY14 Actual Year End Indirect Cost Recovery	Cycle 03 Change FY14 to FY15	Year End Change FY14 to FY15
Provost	1,244,846	1,417,650	5,451,194	5,439,493	-12.2%	0.2%
UAF Central Managed Projects	(475,286)	(471,324)	3,294,814	3,237,408	0.8%	1.8%
UAF Office Information Technology	6,230	7,155	29,000	26,879	-12.9%	7.9%
VC Rural, Community & Native Educ	104,775	70,660	418,425	459,805	48.3%	-9.0%
VC University & Student Advancement	0	4,772	0	1,838	-100.0%	-100.0%
Vice Chancellor for Admin. Services	2,105,657	2,170,122	4,380,000	4,239,750	-3.0%	3.3%
Vice Chancellor for Research	2,157,725	2,378,136	9,597,210	9,243,306	-9.3%	3.8%
Grand Total	5,143,948	5,577,172	23,170,644	22,648,478	-7.8%	2.3%

- **DISCUSSIONS**

- Travel Targets
- OnBase
- Trainings
- Representational Expenses



- **FY15 Financial Managers' Meetings**

Dates are subject to change; locations announced prior to each meeting.

November 25

January 27

February 24

March 31

April 28

May 26

