



# Financial Managers' Meeting

November 26, 2013

## • Safety Minute

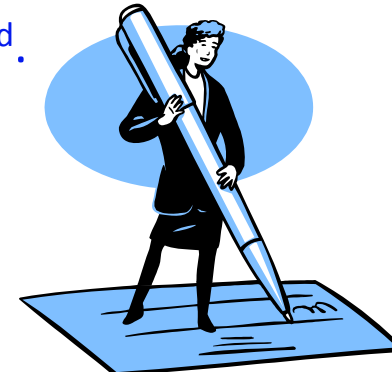
- In case of evacuation, we will take the east exit and meet in the museum.
- Have you completed your safety training? The deadline is 12/1/13!

<http://www.uaf.edu/safety/training/>



## Accounts Payable

- The final 2013 check run is Monday, December 23<sup>rd</sup>. Please ensure that you submit all payments in excess of \$100,000 no later than Wednesday, December 18<sup>th</sup>, in order to guarantee inclusion.
- The next available check run is Friday, January 3<sup>rd</sup>.
  - Kathy Jeffords - mkjeffords@alaska.edu



- **FY14 Strategic Reinvestments**

- Still forthcoming!



- **ProCard Reconciliation**

- New recon software, PaymentNet 4, goes live on 12/1/13.
- Nov transactions through 11/29 will post to banner on 12/3.
- All Pathway Net reconciliation must be completed 12/2.
- November statements (on Pathway) must be run on 12/2.
- After 12/3, Pathway Net is no longer accessible.
- Helen Connor will distribute PaymentNet 4 information on 12/2 along with access details.



- Office of Management & Budget

OR:  
HOW  
I LEARNED  
TO  
STOP  
WORRYING  
AND  
LOVE  
THE  
BOMB



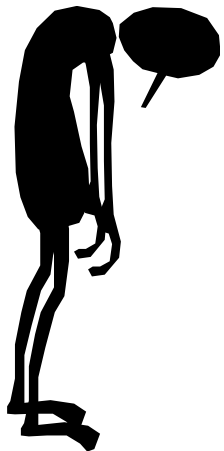
- **October Management Report**

<b>CABINET</b>	<b>Projected UFB (Deficit) at 6/30/14</b>
Chancellor	42,376
Provost	691,490
UAF Central Managed Projects	1,922,408
UAF Office Information Technology	53,639
VC Rural, Community & Native Educ	460,598
VC University & Student Advancement	(140,500)
Vice Chancellor for Admin. Services	565,332
Vice Chancellor for Research	835,644
<b>Grand Total</b>	<b>4,430,988</b>



CABINET	FY14 Actual	FY13 Actual	FY14	FY13 Actual	Year End Change FY13 to FY14
	Student Tuition & Fees at Cycle 04	Net Student Tuition & Fees at Cycle 04	Projected Student Tuition & Fees	Year End Student Tuition & Fees	
Chancellor	892,190	308,776	3,466,100	4,196,451	-17.4%
Provost	8,151,567	7,283,904	16,371,856	15,373,414	6.5%
UAF Office Information Technology	173,761	176,283	270,000	338,944	-20.3%
VC Rural, Community & Native Educ	4,919,377	6,200,353	10,397,808	10,345,344	0.5%
VC University & Student Advancement	4,907,024	4,922,232	6,332,729	6,450,662	-1.8%
Vice Chancellor for Admin. Services	822,715	849,860	1,044,253	1,042,079	0.2%
Vice Chancellor for Research	0	-	0	30,732	-100.0%
<b>Grand Total</b>	<b>19,866,634</b>	<b>19,741,408</b>	<b>37,882,746</b>	<b>37,777,625</b>	<b>0.3%</b>

CABINET	FY14 Actual	FY13 Actual	FY14	FY13 Actual	Year End Change FY13 to FY14
	Indirect Cost Recovery Cycle 04	Indirect Cost Recovery Cycle 04	Projected Indirect Cost Recovery	Year End Indirect Cost Recovery	
Provost	1,853,072	2,011,242	6,309,132	5,792,246	8.9%
UAF Central Managed Projects	(59,968)	(110,905)	2,226,032	3,125,371	-28.8%
UAF Office Information Technology	7,226	9,043	30,000	26,658	12.5%
VC Rural, Community & Native Educ	115,845	126,995	391,616	485,888	-19.4%
VC University & Student Advancement	6,096	3,891	14,896	17,266	-13.7%
Vice Chancellor for Admin. Services	2,405,358	2,486,059	4,538,300	4,464,000	1.7%
Vice Chancellor for Research	3,184,332	3,175,530	9,323,184	9,477,823	-1.6%
<b>Grand Total</b>	<b>7,511,961</b>	<b>7,701,855</b>	<b>22,833,159</b>	<b>23,389,250</b>	<b>-2.4%</b>



- **TOAD Sessions**

More to come! Please join us as we explore this fantastic tool!

Upcoming sessions and dates at 301 Rasmuson (20 per session):

- Toad I “Tips and Tricks” (data storage locations, linking data fields, building queries):  
Wednesday, December 4<sup>th</sup>, 3-5pm
- Toad II “Data Manipulation” (calculated fields and global condition clauses):  
Tuesday, December 10<sup>th</sup>, 3-5pm
- Toad III “Advanced Outputs” (sub-queries and complex field manipulation):  
Friday, December 13<sup>th</sup>, 3-5pm
- Toad IV “The Think Tank” (real-world problem solving!):  
Wednesday, December 18<sup>th</sup>, 9-11am

To Register, send an email to [jwthois@alaska.edu](mailto:jwthois@alaska.edu)



- **FY14 Financial Managers' Meetings**

- December – Happy Holidays!
- January 28<sup>th</sup>
- February 25<sup>th</sup>
- March 25<sup>th</sup>
- April 29<sup>th</sup>
- May 27<sup>th</sup>



*All dates subject to change or cancellation*