



Eva Dawn Burk

UAF SNRE

M.S. Student

Nenana Native Village

Toghotthele

Manley Hot Springs

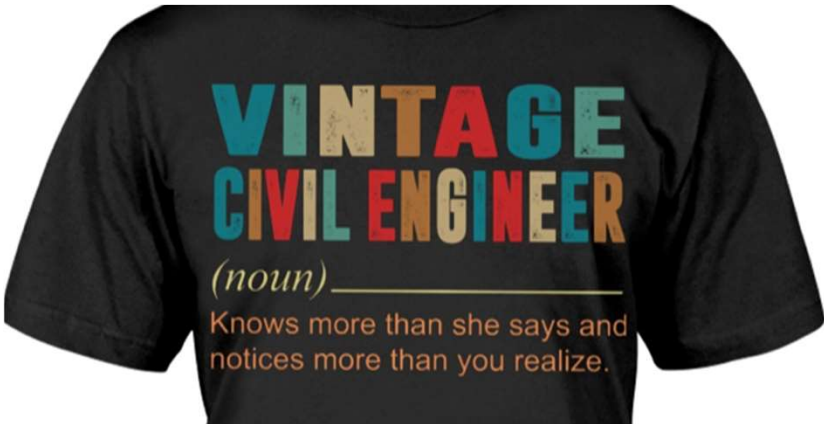
Bean Ridge

TCC

Doyon

Creating Sustainable Local Food Systems: Traditional Foods & Agricultural Adaptations

Who I Am



Relations:
Part Land
Part Water
Always
NATIVE!



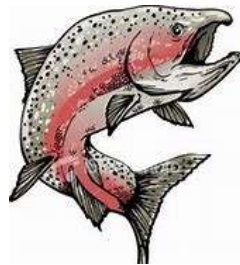
Archives, University of Alaska, Fairbanks



Kohtr'elneyh
Remembering Forward

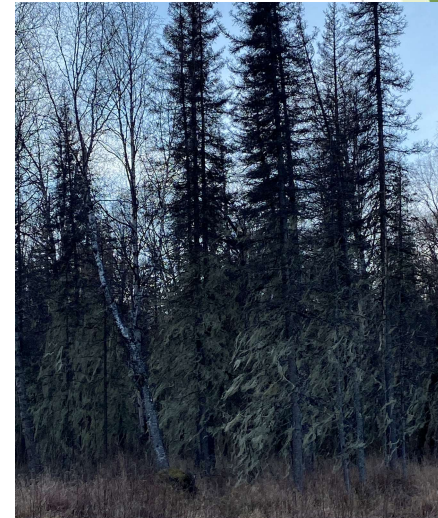
Indigenous Food Values

- ▶ Our culture is intrinsically linked to food security and sovereignty
- ▶ Our calendar and work schedule follows seasons versus workweeks
- ▶ Harvesting and preparing food must be part of everyday life
- ▶ We are relatives of plants, animals, land, air and water
- ▶ We honor those relationships with ceremony
- ▶ We only take what is needed to survive to ensure sustainability
- ▶ Zero waste - every part of animal or plant is used
- ▶ State and Federal policies are endangering our Indigenous foods

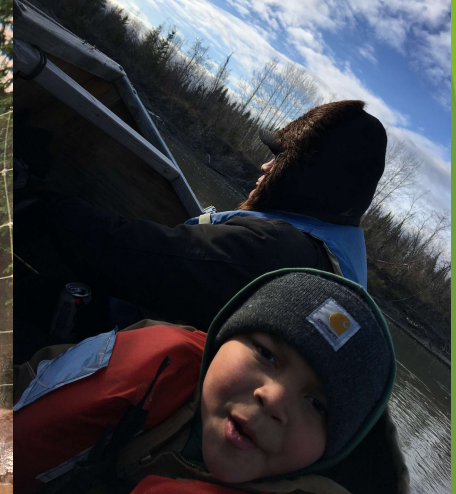


Food Gathering & Natural Medicines

- ▶ Knowing wild foods availability
- ▶ Understanding environment & animal behavior
- ▶ Knowing plants & medicines
- ▶ Picking berries and plants
- ▶ Digging root foods
- ▶ Picking grasses, bark or roots for weaving
- ▶ Preserving & storing



Remembering Forward - Learning together



Forming Collaborative Partnerships to Advance Solutions to Food Security and Wellbeing

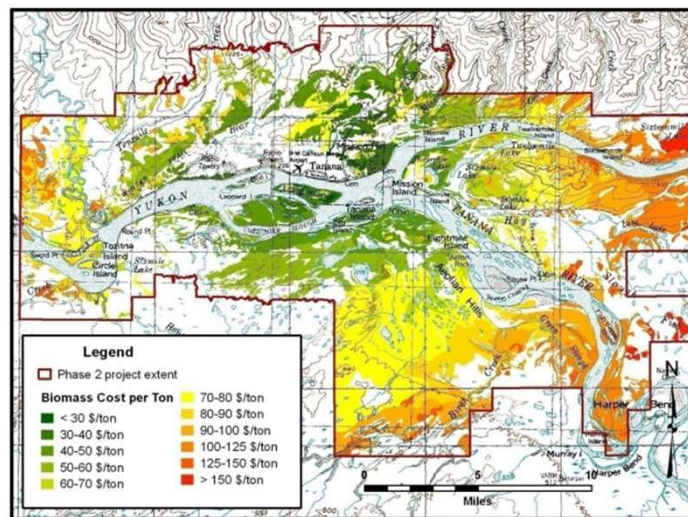


What factors contribute to the success of agricultural operations in rural Alaska?

Collaboration



Planning



Project Life Cycle - Feasibility, Design, Construction, Operations and Maintenance

Feasibility, Design & Construction



Scale project to community needs

Operations & Maintenance

Biomass Heated Greenhouse - Land Management & Labor



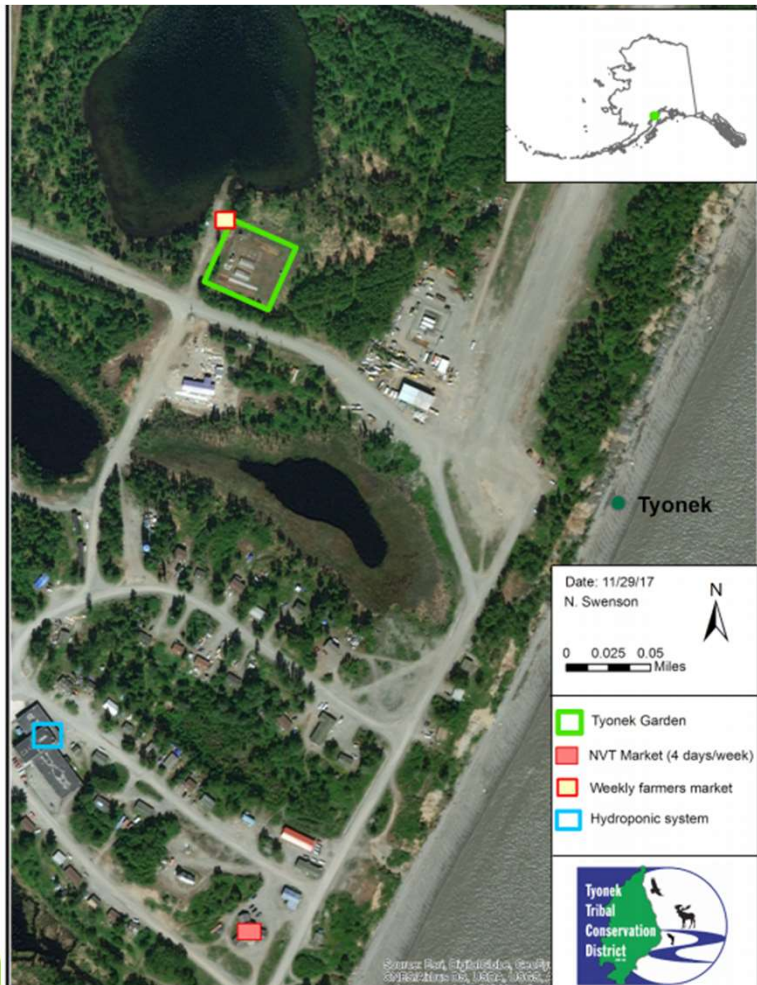
Equipment, Workforce, Access Roads, Lumber Yard and Storage

Operations & Maintenance

Education, Community Involvement & Marketing



Programs that Work



Tyonek Tribal Conservation District



Collaborative Partnerships

Meyer Farm - Bethel

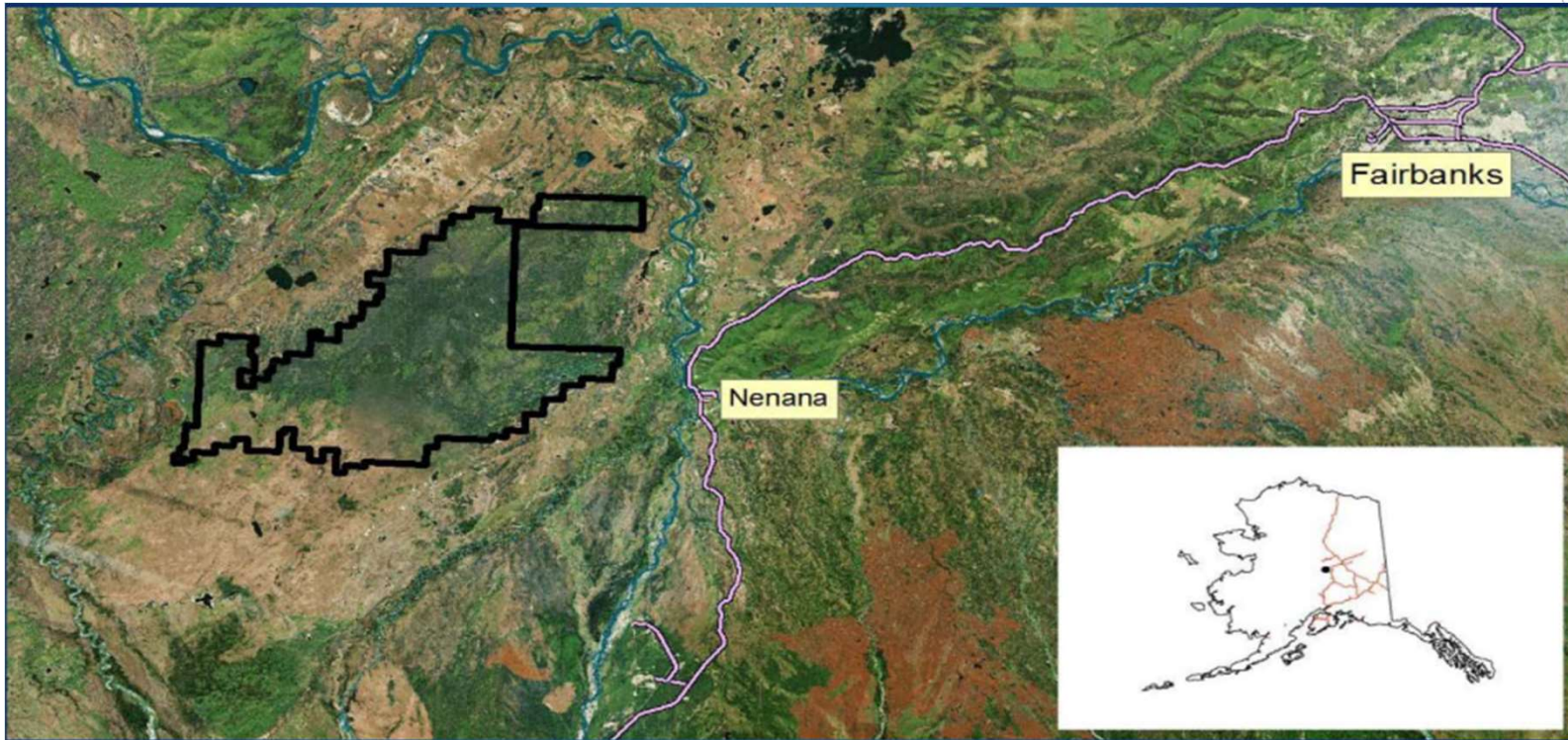


Collaborative Partnerships

Goosefoot Farm – St. Pierre Family



Local Application - Collaboration Potential Nenana Totchaket Agriculture Project

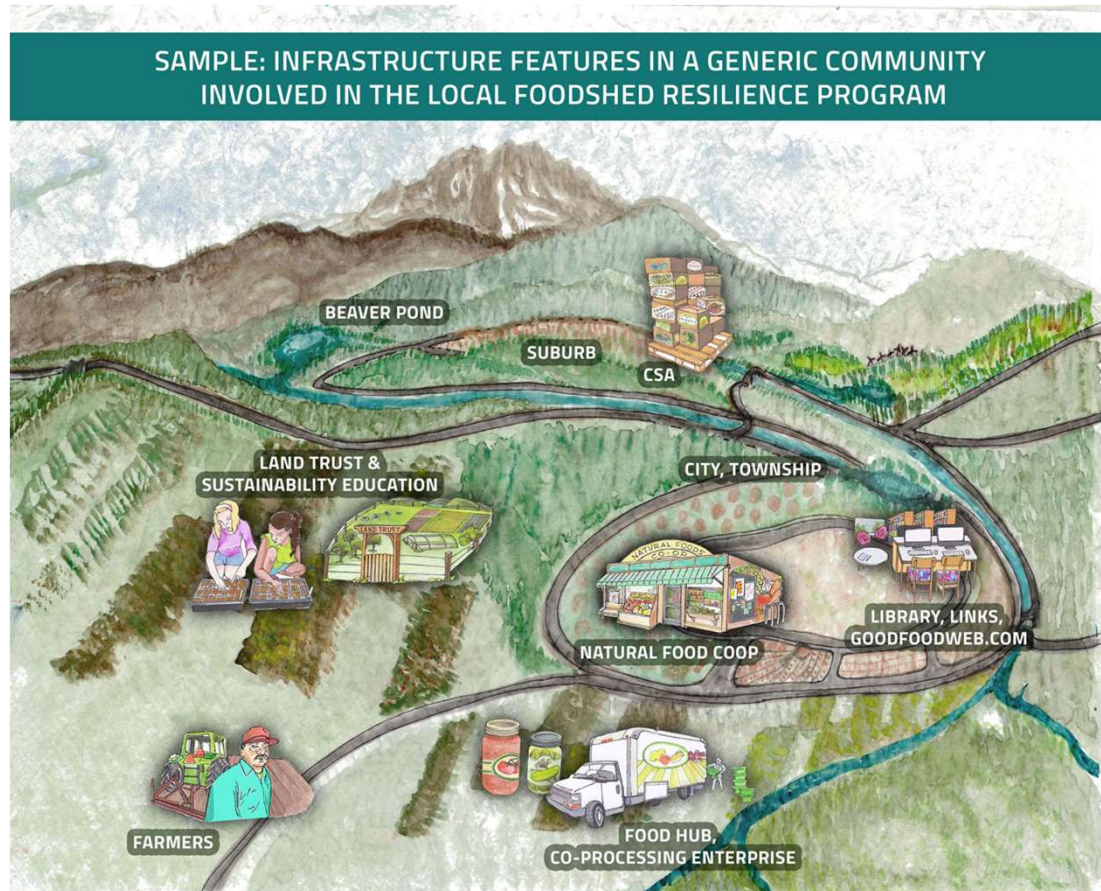


Native Values Applied to Sustainability

- ▶ Spirituality is embedded in all elements
- ▶ Humans are responsible for maintaining harmony with nature
- ▶ Resources are gifts - reciprocity between humans and nature
- ▶ Honor nature daily with ceremony and spirituality
- ▶ Wisdom and values come from direct interaction with nature
- ▶ Time is circular with naturally sustainable cycles



Vision - Partnerships for Sustainable Food Hubs



Concluding thoughts



Children participate in harvesting veggies in Igiugig

The background of the slide features abstract, overlapping green geometric shapes, primarily triangles and polygons, in various shades of green, creating a modern and dynamic visual effect.

Enaa Basee

Questions?

Eva Burk:

Phone: 907-322-7467

edburk@alaska.edu