

# Alaska Plant Materials Center

Palmer, AK



## Division of Agriculture

Alaska Department of Natural Resources



**ROBERT (ROB) CARTER**

[Robert.Carter@alaska.gov](mailto:Robert.Carter@alaska.gov)

(907) 745-8127

# Northern Latitude Plant Materials Center

Production & Environmental Services



## Mission:

To serve Alaska's needs in production of native plants and traditional crops.

# Northern Latitude Plant Materials Center



405 acre facility – *About* 150 acres in production





## Programs

- Foundation Seed Production & Sales
- Certified Seed Potatoes
- Revegetation & Native Plant Commercialization
- Industrial Hemp
- Erosion Control
- Certified Seed & Pathology Laboratory
- Plant Production & Horticulture
- Invasive Weeds
- Seed Cleaning & Conditioning





## Foundation Seed Production & Sales

Maintain Foundation level seed to make available for sale to Alaskan producers.

Produce the highest quality seed suited to Alaska's climate and soils.

Provide grass, grain and forb seed certification inspections for Alaskan seed producers.

Annual Seed sale April 1<sup>st</sup> through September 1<sup>st</sup>.







## Certified Seed Potato Production

Maintain Potato  
Germplasm (251  
varieties).

Produce Generation  
Zero (Go) seed for sale  
to Alaska seed potato  
industry.

Assist Potato producers  
with varietal selection,  
BMP's and disease  
control.

Variety trialing.





## Revegetation & Native Plant Commercialization

Develop and select accessions of native plants for future release.

Provide technical advice on revegetation.

Develop new methods of using native plants and seeds for restoration.

Produce revegetation publications for use by industry and agencies in Alaska.





# Industrial Hemp

Implementing Senate Bill 6, Industrial Hemp Pilot Program.

Provides a legal avenue on the Federal & State level for the production, processing and marketing of Industrial Hemp and Hemp parts.

Regulations currently completed with expectation of implementation late March 2020



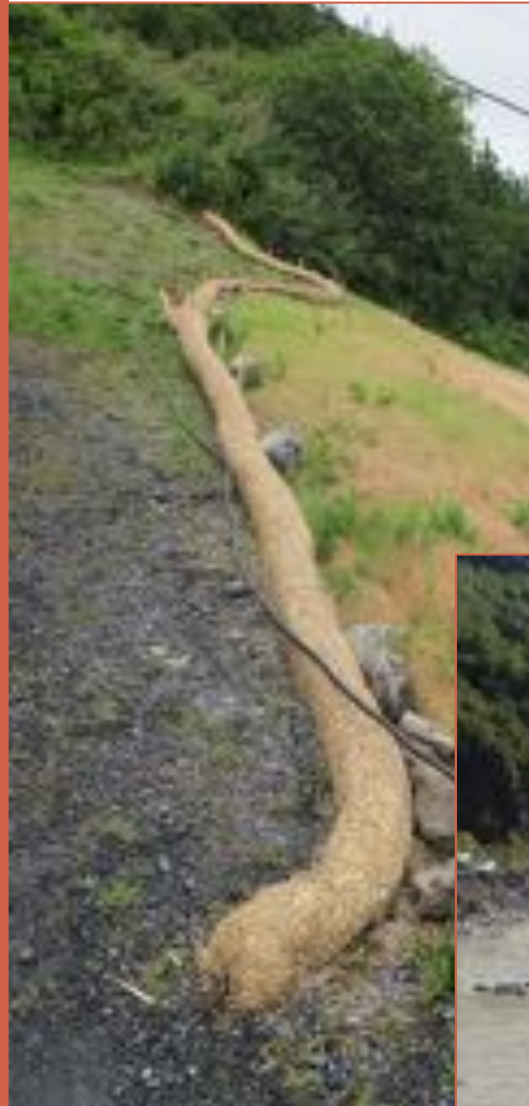


# Erosion Control

Assist and advise agencies, contractors, land users & public on fundamental soil erosion practices.

Support industry professionals with soil analysis and interpretation.

Produce erosion control publications for use by industry and agencies in Alaska.

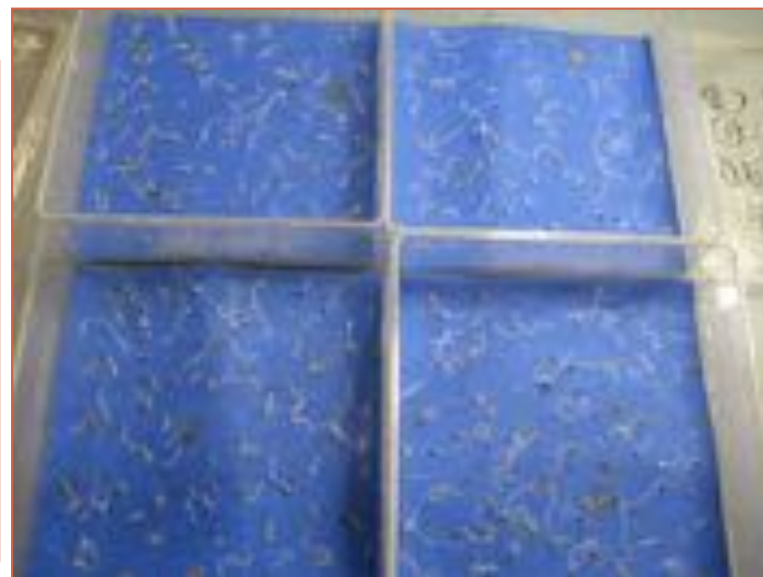




## Certified Seed & Pathology Laboratory

Conducts seed testing services for Alaskans, using AOSCA standards.

- Viability
- Germination or TZ
- Purity or % Live Seed
- Noxious weed
- Grain moisture
- Seed Identification
- Diagnosis, document and management of plant diseases in agronomic and horticultural crops in Alaska.







## Invasive Weeds

Program coordination with state and local agencies.

Effectively manage high priority invasive plants.

Educate state land users, the general public and other stakeholders on invasive plants.

Research and understand invasive plants role in Alaska agriculture.

Weed-free forage and gravel products.







# Plant Production & Horticulture

## Trials and Evaluation

- Specialty Crops
- Small Fruits/Berries
- Rootstocks

## Production

- Native Grass & Forbs  
Plantlets for seed  
production
- Native Trees
- Hemp Plantlets
- 



# Seed Clean & Conditioning

Provide fast and efficient cleaning and conditioning services to Alaskan agricultural industries.

Grasses

Grains

Forbs

Woody Plants

Berries



# Questions ?



**ROB CARTER**  
**ROBERT.CARTER@ALASKA.GOV**  
**907-745-8127**

