



# 4-H NEWSLETTER

[www.uaf.edu/tanana4h](http://www.uaf.edu/tanana4h)

## MARLA'S ROUNDUP



Well, this truly is my last column. We have hired Matthew Anderson who is an agriculture/horticulture/4-H professional in Tennessee. He starts work July 1. He will bring a whole different knowledge to the program and will need help as he gets situated.

I ask that you all reach out and support him. I have worked in this position for almost 21 years, and you have gotten accustomed to me. He will not be me and please do not expect him to be. Educate him and be open to the ideas he brings. It will be a breath of fresh air for our district and 4-H program. I am excited to have him on staff and a part of our team.

The leader's council will host a welcome barbecue potluck to welcome Matthew July 8 in lieu of it council meeting. Please plan on attending and welcoming Matthew to Alaska 4-H.

As for me, I won't be far away and will be here to mentor Matthew and answer any questions he may have. I ask, out of respect for him and me, that you will go to him with all your questions and if he needs to he can reach out to me. I will be around to help him with Cloverbud Camp and some of the fair.

Speaking of camp, get your camp counselor applications in to be a counselor. Then, as for fair and the rest of the year, Matthew will be staff, so he is only allotted 40 hours a week and no overtime. You have been used to having me for as much time as you have wanted, but he will have to pick and choose what he should and should not do.

With that said, I want to thank you all for a good run. It has truly been my honor to serve you over the years. I know I have not always done things the way you think they should be done, but I have tried to follow the policies and procedures and done my best to honor myself. There have been disagreements over the years and to those who we have been able to work them out, thank you, even if you didn't fully agree with the situation.

As I move into my next role, I will do my best to honor the volunteers. I can't make things go away, but hopefully I can make them easier with some logic. Thank you all for being a part of my life and for doing amazing things for our youth and the 4-H program. Keep on doing it.

*Marla Lowder*



Participants of the 4-H State Horse Contest are all smiles! You all worked hard and your amazing achievements are evidence of that! For results of the contest, see page 7. Marla Lowder photo



## INSIDE THIS ISSUE

2 Calendar – Don't Miss Out!

3 Highlights – Graduations!

3 Cloverbud Camp Time

4 Club News – Free Rangers

5 Scholarships – Travel

6 Livestock – Reminders

7 Horse Contest – Results

8 Presentation Day – Results

9 Fair Time – Contests

12 Parting Shot – Peace out!

13 Cloverbud Camp Forms

21 Fair Contest Forms

27 Horse Clinic Registration

28 Market Livestock Update



(See also Parting Shot – Can YOU name the HIPPIE on page 12?)

## CALENDAR



### June

- 2 Teen Club, 6 p.m.
- 3 Livestock Committee meeting, 6:30 p.m.
- 9 Horse Council meeting, 6:30 p.m.
- 10 Leaders Council meeting, 6:30 p.m.
- 12 Horse Clinic begins, running through June 14
- 16 Teen Club, 6 p.m.

### July

- 1 Livestock Committee meeting, 6:30 p.m.
- 3 Independence Day break; 4-H office to be closed July 3-4
- 7 Teen Club, 6 p.m.
- 8 Welcome barbecue for Matthew Anderson, new Tanana District 4-H coordinator, hosted by Leaders Council, 6:30 p.m.
- 14 Horse Council meeting, 6:30 p.m.
- 14 Cloverbud Camp begins, running through July 16
- 21 Teen Club, 6 p.m.
- 25 Tanana Valley State Fair begins, running through Aug. 3

### August

- 4 Teen Club meeting, 6 p.m.
- 5 Livestock Committee meeting, 6:30 p.m.
- 11 Horse Council meeting, 6:30 p.m.
- 12 Leaders Council meeting, 6:30 p.m.
- 15 Youth and Leader Educational Scholarship Applications Due
- 18 Teen Club, 6 p.m.

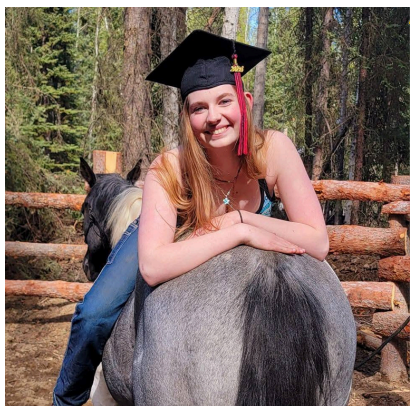


### CONTACT US

UAF Cooperative Extension Service Tanana District Office  
UAF University Park Building, 1000 University Ave., Rm. 109  
P.O. Box 758155, Fairbanks, AK 99775-8155  
907-474-1530, [www.uaf.edu/tanana4h](http://www.uaf.edu/tanana4h)

Editor: Marla Lowder, Tanana District 4-H Agent | [mklowder@alaska.edu](mailto:mklowder@alaska.edu) | 907-474-2427  
Layout: Ronda Boswell, Tanana District Admin. | [rlboswell@alaska.edu](mailto:rlboswell@alaska.edu) | 907-474-2450

## HIGHLIGHTS



Chelsea, Raven Homeschool



### Congrats to Our 2025 Grads!

We are so proud of you and will miss you, but know you will do  **GREAT**  things. Here's to the Class of 2025!

Not pictured are these great grads, too:

**Finn, West Valley High School**

**Winter, FOCUS Homeschool**

**Way to go, seniors!**

**Now ... go reach for the stars!**



Elle, FOCUS Homeschool

## CLOVERBUDS

### Come to Cloverbud Camp – July 14-16

Cloverbud Camp is always an exciting time. Things are in the works for planning it. I know it will be a fun and exciting camp as always.

So, if you have youngsters ages 5-7 who would enjoy this half day camp – with the security of home in the evenings – see pages 18-20 for more information and registration.



Lili Harlow, a camp counselor at Cloverbud Camp, helping campers with a craft project. Marla Lowder photo



### Seeking Enthusiastic Cloverbud Camp Counselors!

I hope many of you who were counselors last year at Cloverbud Camp will return again and maybe a few new ones. Any questions, please give Marla a call.

The deadline for applications is June 6. The application to be a camp counselor for Cloverbud Camp is can be found on pages 13-17.





### Free Rangers 4-H Club – Exciting Monthly Activities!

Check out the fun schedule below for Free Rangers meetings! The club typically meets the second Tuesday of each month from 4 to 6 p.m. at the UAF University Park Building, 1000 University Ave., Room 108. New members are welcome! (As the new 4-H year begins Oct. 1, 2025, it may be best for new members to wait until Oct. 1 to enroll so they can start fresh with everyone one else.)

Please note, the meeting schedule and activities planned are subject to change, so please contact a leader before attending a meeting: Jennifer Willeford, organizational leader, 907-347-5498, [jwilleford7@gmail.com](mailto:jwilleford7@gmail.com), or Lorrie Powalski, project leader, 907-322-5952, [alliesfarmalaska@gmail.com](mailto:alliesfarmalaska@gmail.com).

Come join the fun and learn something new by doing! (And be sure to check out the club invitation on page 26 for more information!



- **June** – Work on helping everyone register for the fair. Discuss the benefit of canning and possibly have the kids can jam, pickles or something else.



- **July** – Make lists of everything kids will need for the fair and how to submit projects. Education for parents and kids who are new to the fair and projects. Help kids make water containers for their fair pens and discuss how to upcycle household things to use for animal care or their garden.



- **August** – Follow up on the fair! Games, maybe a bonfire at a park.



- **September** – With back to school, make homemade cups of noodles. A healthy and inexpensive alternative to ramen. Education on dehydrating vegetables.



- **October** – Have the kids make sourdough starter. The lead up will be to possibly use some to make bread for the food bank for Thanksgiving.



- **November** – Discuss community service projects. Games, baking cookies.



- **December** – Make holiday cards to send to buyers, friends, family. Eat cookies. Let the kids lead.





## TRAVEL SCHOLARSHIPS



### Leaders Council Travel Scholarships

Youth and Leader Educational Scholarship Applications are **DUE AUG. 15** (for events Oct. 1-Dec. 30).

The Tanana District 4-H Leaders Council established the Youth and Leader Educational Scholarship Program to provide funds for youth and leaders to help them attend events that will further their leadership skills and project knowledge. It is not intended to replace other funding sources or to be a full scholarship for the event.

Visit [www.uaf.edu/tanana4h](http://www.uaf.edu/tanana4h) for all the details and forms.



## REMINDERS

# Reminder

### Have you completed enrollment?

If you haven't done your enrollment online yet, you need to get it done — leaders AND members. If not, and something happens to you, you are not covered by insurance or liability insurance.

You also should not be doing any fundraising using the 4-H name or logo until you are fully enrolled. Thanks!

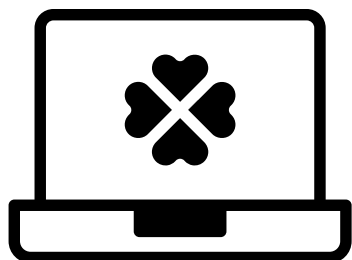
### Need a helping hand with leader trainings?

We are here for YOU!

If you are having trouble getting those trainings done, please let me know so I can help you with them. If there is something that you feel you or the district needs training on, let me know. I'll get things organized.

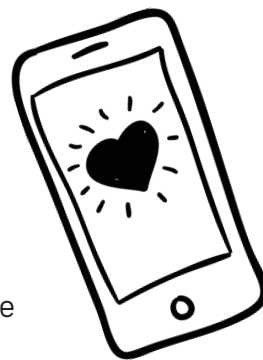
I want to help you all to be the best leaders and to be successful in leading our future leaders ... our youth.

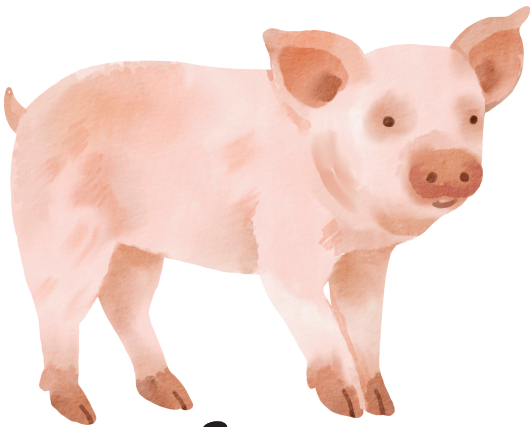
~ Marla



### Find us on Facebook, too!

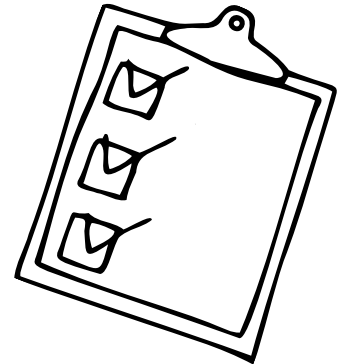
Don't forget to like Tanana District 4-H on Facebook. Also, like Alaska 4-H too. There is some great information that comes across these social media pages!





## Market Livestock Project Update

Be sure you check out the attachment at the end of this newsletter for important information about dates, vaccinations and other guidelines from our state veterinarian. See page 28.

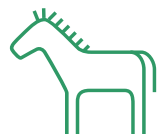
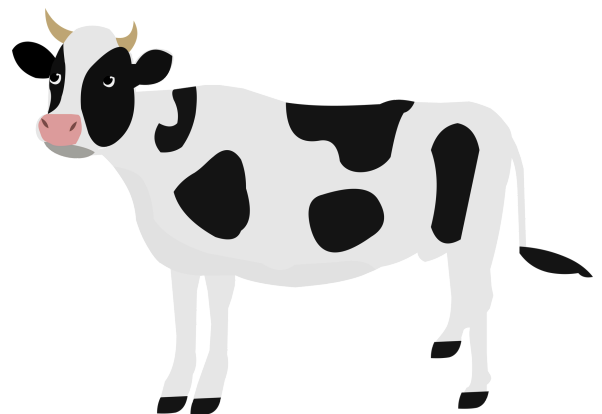


## Livestock Possession Dates

Don't forget the following dates if you checked on the agreement that you are raising one of these animals for market.

- **Feeder Steer** – born on or after Dec. 1 and in possession by April 15.
- **Lamb** – born on or after Jan. 1 and in possession by May 1.
- **Swine** – born on or after Jan. 1 and in possession by April 15.
- **Goat** – born on or after Jan. 1 and in possession by May 1.
- **Turkey** – hatched on or after March 15 and in possession by April 15.
- **Goose** – hatched on or after March 15 and in possession by April 15.
- **Ducks** – hatched on or after May 25 and in possession by June 8.
- **Chickens** – hatched on or after May 23 and in possession by June 6.
- **Rabbits** – born after May 8 and in possession by July 1.

Better get a  
**MOOOOOOOOVE** on!  
It's almost fair time!



# HORSES



## 4-H State Horse Contest Results

Thank you to Tanana District 4-H for hosting the State 4-H Horse Contest this year and it was an outstanding job. It was held May 1-3 at the UAF University Park Building and Seekins Family Quarter Horses. We had 21 youth from around the state come and participate. It was a good time and was great to see everyone excited to participate again. Special thanks goes out to Beth Austin and Andrea Reinheller and their team for making it happen for the youth who came. Thank you to the parents and coaches for helping them be successful. It was a great time and we had lots of fun. Following are the results of our local participants.

### Horse Judging

#### Teams:

3. Frosty Tails – Julie Weisensel, Anja Wandling, Chelsea Curwen, Winter Moon
4. Rockin' Ranchers – Emma Austin, Leah Austin, Rebecca Reinheller, Trista Reinheller

#### Individuals:

#### Juniors:

2. Madison Austin
4. Sarah Reinheller

#### Intermediates:

2. Anja Wandling
4. Leah Austin
5. Trista Reinheller

#### Seniors:

1. Julie Weisensel
3. Rebecca Reinheller

Horse Judging Quality Champion – Chelsea Curwen



### Demonstrations/Illustrated Talk:

#### Junior:

2. Leah Austin – How to Judge Hunt Seat Equitation
3. Trista Reinheller – Cushings

#### Senior:

3. Emma Austin – What Do You Know About AQHA?

### Horse Bowl:

#### Teams:

1. Midnight Sun Riders – Chelsea Curwen, Winter Moon, Anja Wandling, Dean Watson

#### High Points:

1. Julie Weisensel
3. Anja Wandling
4. Chelsea Curwen
5. Winter Moon



### Hippology

#### Teams Overall:

1. Frosty Tails – Julie Weisensel, Anja Wandling, Chelsea Curwen, Winter Moon

#### Individuals Overall:

#### Intermediates:

1. Anja Wandling

#### Seniors:

1. Julie Weisensel

#### Stations Individuals:

#### Intermediates:

1. Anja Wandling

#### Senior:

1. Julie Weisensel

#### Station Teams:

1. Frosty Tails – Chelsea Curwen, Winter Moon, Anja Wandling, Julie Weisensel

#### Exam:

#### Intermediate:

1. Anja Wandling

#### Seniors:

1. Julie Weisensel
3. Chelsea Curwen

#### Exam Teams:

1. Frosty Tails – Chelsea Curwen, Winter Moon, Anja Wandling, Julie Weisensel

#### Horse Judging Individuals:

#### Intermediate:

3. Anja Wandling

#### Horse Judging Teams:

3. Frosty Tails – Chelsea Curwen, Winter Moon, Anja Wandling, Julie Weisensel

#### Team Problems:

1. Rockin' Ranchers – Leah Austin, Emma Austin, Rebecca Reinheller, Trista Reinheller
3. Frosty Tails – Chelsea Curwen, Winter Moon, Anja Wandling, Julie Weisensel





# PRESENTATIONS

## 4-H Public Presentation/Demonstration Day Results

On April 5, we had a great day at the presentation contest and learned some pretty cool things, too. I would like to start off with a HUGE thank you to our judges for generously volunteering their time, Kaitlynn and Priscilla Rice! And .... thank you to all of the participants. Your presentations and demonstrations were all just wonderful and informative. We learned all sorts of things and enjoyed them.

Awards are based on:

**Blue = Excellent**

**Red = Good**

**White = Worthy**

Now for what you are waiting for, the results! May I have a drum roll please ...



### Cloverbuds – 5-7 years old

Illustrated Talks:

Jordan Morgan, Forget-Me-Not 4-H Club – Participation Ribbon, "Growing Chicks"

### Junior Class – 8-11 years old

Illustrated Talks:

Sarah Reinheller, Rockin' Ranchers – Grand Champion, "Horse Bits"

### Intermediate Class – 12-14 years old

Fiona Maybie, Rockin' Ranchers – Reserve Champion, "Horse Arthritis"

Illustrated Talks:

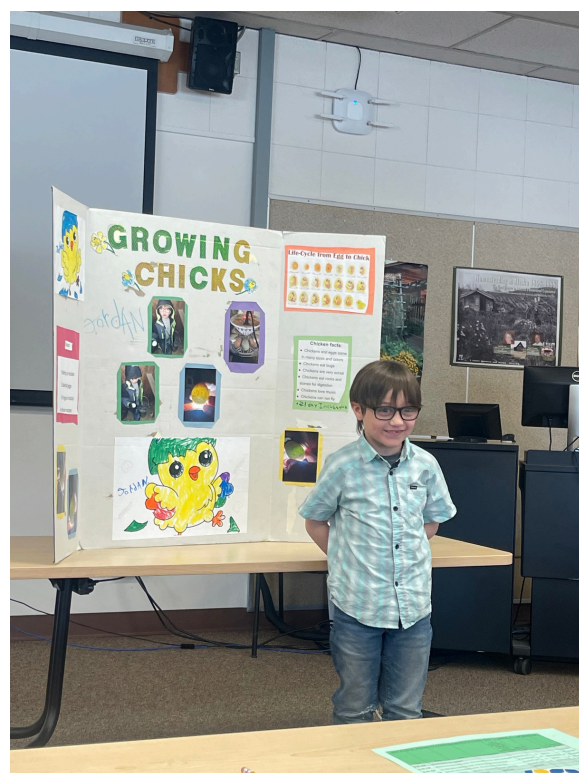
Anja Wandling, Midnight Sun Riders – Grand Champion, "How to Become an Equine Veterinarian"

Trista Reinheller, Rockin' Ranchers – Blue Ribbon, "Showmanship"

### Seniors – 15-18 years old

Illustrated Talks:

Rebecca Reinheller, Rockin' Ranchers – Reserve Champion, "Flying Lead Changes"



Jordan tells us how to grow chickens in his illustrated talk for Public Presentation Demonstration Day. Marla Lowder photo

**AWESOME  
WORK,  
4-H'rs!**



## FAIR TIME

**It is not too early to get a HOP ON planning your fair exhibits!**  
**Some "Fun Fair Facts" to help you plan!**

### Fair Dates:

- Fair is July 25 to Aug. 3, 2025

### Division 14-H Club Work – Dates to Remember:

- Non-Perishable Entry Date: Saturday, July 19, 1 to 6 p.m.
- Perishable Entry Date: Thursday, July 24, 1 to 6 p.m.
- Exhibit Pickup Date: Monday, Aug. 4, 1 to 6 p.m.

### Fair Theme Components:

- Theme: Take a Hop on the Wild Side (rabbit or bunny)
- Colors: **Burnt Orange**, **Raindrop Blue**, **Forest Green**
- Vegetable: Carrot
- Flower: Daisy

Earn a theme ribbon by using one or more of the above four (4) components in your exhibit. These ribbons incorporate at least one fair color, the theme and date specific to the fair year and are not generic like the premium ribbons.



**Tanana Valley State Fair**  
*July 25 - August 3, 2025*

## Increased 4-H Fair Premiums and Exhibit Incentives

### Sponsored by Tanana District 4-H Leaders Council

During the 2025 fair, premiums will be increased for the three 4-H Divisions, 1 (4-H Club Work), 4B (4-H and FFA Livestock) and 5A (4-H Horse Show) as follows:



- Blue – \$5 increased from \$3
- Red – \$3 increased from \$2
- White – \$2 increased from \$1
- Cloverbud – \$2 increased from \$1
- Class Champion – \$5 increased from \$3



The Danish Judging system will be continued to be used. This increase is being sponsored by the Tanana District 4-H Leaders Council.

In addition, the Tanana District will offer fair entry incentives as it did in 2024. This includes cash and gift cards drawing (each 4-H exhibit earns the 4-H member one ticket to the drawing) and \$100 cash to the 4-H member that has the most exhibits. Last year the winner entered 63 4-H exhibits. The challenge goes out to top this.

## MORE FAIR TIME

### Contests Division 1 4-H Club Work

There are several contests 4-H members can participate in during the Tanana Valley State Fair.

Registration forms, found on pages 21-25, need to be turned in during Non-Perishable Entry Day, July 19, between 1 and 6 p.m. Check out these great contests!



**Favorite Foods** – Held Monday, July 21, at noon in the Upper Totem. Guidelines are available for this contest.



**Home Garden Tour** – Held Tuesday, July 22, starting around 4 p.m. Judges visit the home gardens of members and interview member about their garden.



**Sewing Challenge** – Held Tuesday, July 22, in Room 154 at the UAF University Park Building, 1000 University Ave. Here, the 4-H member is given a project (2-3) hours to sew in front of the judge.



**Fashion Revue** – Held Sunday, July 27, at 12:30 p.m. on the fairgrounds. There are two parts to this. The Fashion Revue is where the member models an outfit they have made. They need to be enrolled in a Clothing and Textile Project for this. The other part is the My Favorite Outfit. This can be an outfit they made or it can be one that is store bought or someone else made for them. They do not have to be enrolled in a Clothing and Textile Project to enter this.



**Demonstrations and Performing Arts** – Held Sunday, July 27, at 12:30 p.m. on the fairgrounds. Members can either do demonstration, illustrated talk or perform (sing, dance, recite poetry, etc.)



**Bake Off** – Held Wednesday, July 30, at noon in the Borealis Pavilion in the Spenard Test Kitchen on the fairgrounds. We will work with 4-H members to schedule their time as to not conflict with other 4-H events.



### Seeking Building Attendants for Upper Totem Building

The fair will provide a day pass for anyone who needs one to volunteer in the Upper Totem Building. Duties include watching over all the exhibits in the building, answering questions from the public such as where are the large cabbages to the nearest restroom. There will be information available to help you answer these questions as well as questions about 4-H.

Volunteers must be 18 or older. Volunteers can be parents, grandparents, leaders, co-workers, aunts, uncles, friends, etc. Just have the desire to help 4-H and the fair out. It is asked that each 4-H member find an adult to fill at least one time slot. To volunteer contact Patsy at [patsyjperkins@hotmail.com](mailto:patsyjperkins@hotmail.com). It would be nice to get all shifts filled ASAP as the fair has to get the day passes issued. We are doing 3-hour shifts this year for the entire duration of the fair, Friday, July 25, through Sunday, Aug. 3. Shifts available are 1 to 4 p.m.; 4 to 7 p.m.; and 7 to 10 p.m.



## COMMITTEE & COUNCIL MEETINGS

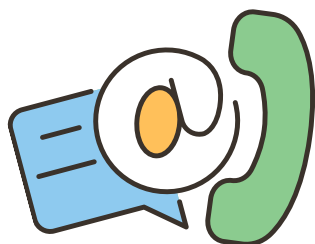
### Come hear what's new!

Leaders, don't forget you are invited to attend any of the following monthly meetings. Most meetings have gone face-to-face now, but the Zoom option is still available, if preferred. If you need the Zoom link, contact the Extension office or one of the council members. Also, it is a good idea to make sure a meeting is being held before attending it in person as some meetings may be canceled if there is no business to conduct.

- **Leaders Council meetings** – Second Tuesday of the month at 6:30 p.m.
- **Livestock Committee meetings** – First Tuesday of the month at 6:30 p.m., as needed. Watch the listserv for meeting announcements and updates.
- **Horse Council meetings** – Second Monday of the month at 6:30 p.m. September through May.
- **Zoom Reminder** – We still have a Zoom account set up that you can use for club meetings, if it is available. Please contact Ronda or Marla through email to sign up for it. We will share the link with you to share with your club members. We ask that you only use it for the date and time you sign up for as others may be using it before or after you. Thank you for your cooperation with this.



## LEADERS COUNCIL CONTACTS



**If you have any questions about 4-H, please contact your local 4-H Office at 907-474-2427 or one of your 2024-25 Leaders Council officers:**

- President – Priscilla Rice, plmrice.ak@gmail.com
- Vice President – Malena Dote, malenadote@gmail.com
- Secretary – Jan Hanscom, jan.hanscom@gmail.com
- Treasurer – Patsy Perkins, patsyjperkins@hotmail.com

## SUBMIT A PHOTO!

To submit a photo for consideration, please verify the following information BEFORE sharing it with us: Each youth featured in the photo must:

- be in active status in the ZSuite 4-H enrollment program.
- an approved Media and Information Release Statement in the ZSuite 4-H enrollment program.
- identified by both first and last name.

A few more helpful hints:

- Non-4-H members may not be in the photo, unless photo includes the written permission from a parent or guardian.
- If we choose to identify youth in a cutline or story, only first names are used.
- Be sure to include the photographer's first and last name, too, for credit!
- We like action shots – showing your club members doing things!
- Email your photo to both [rlboswell@alaska.edu](mailto:rlboswell@alaska.edu) and [mklowder@alaska.edu](mailto:mklowder@alaska.edu), along with the above information. We cannot guarantee publishing all photos, but we will do our best!



**Thank you for sharing all the cool things your club is doing!**

## PARTING SHOT



Soooo ... which groovy hippie is our own Marvelous Marla? Let us know if you know the answer! (Tanja Bryan photo)

## Rollin' right along ... Marla Lowder is "MOVIN' ON UP" (the hill!)

After a successful almost 21-year run serving as agent and driving force of the Tanana District 4-H program, Marla Lowder is taking her fun loving self to serve Alaska 4-H as state program lead.

But don't worry, be hippie! This is not good-bye ... this is good luck and see ya' around (since she literally will be just up the street and hill from the district office)!

A heartfelt thank you, Marla, from all your 4-H friends and families for all the fun, support and love of our youth!

## REGULATIONS AND POLICIES

This work is supported by the U.S. Department of Agriculture's National Institute of Food and Agriculture.

In accordance with Federal civil rights law and U.S. Department of Agriculture (USDA) civil rights regulations and policies, the USDA, its Agencies, offices, and employees, and institutions participating in or administering USDA programs are prohibited from discriminating based on race, color, national origin, religion, sex, disability, age, marital status, family/parental status, income derived from a public assistance program, political beliefs, or reprisal or retaliation for prior civil rights activity, in any program or activity conducted or funded by USDA (not all bases apply to all programs). Remedies and complaint filing deadlines vary by program or incident.

Persons with disabilities who require alternative means of communication for program information (e.g., Braille, large print, audiotape, American Sign Language, etc.) should contact the responsible Agency or USDA's TARGET Center at (202) 720-2600 (voice and TTY) or contact USDA through the Federal Relay Service at (800) 877-8339. Additionally, program information may be made available in languages other than English.

To file a program discrimination complaint, complete the USDA Program Discrimination Complaint Form, AD-3027, found online at [How to File a Program Discrimination Complaint](#) and at any USDA office or write a letter addressed to USDA and provide in the letter all of the information requested in the form. To request a copy of the complaint form, call (866) 632-9992. Submit your completed form or letter to USDA by: (1) mail: U.S. Department of Agriculture, Office of the Assistant Secretary for Civil Rights, 1400 Independence Avenue, SW, Washington, D.C. 20250-9410; (2) fax: (202) 690-7442; or (3) email: [program.intake@usda.gov](mailto:program.intake@usda.gov), USDA is an equal opportunity provider, employer, and lender.

Accommodation requests related to a disability should be made five business days in advance to Marla Lowder at [mklowder@alaska.edu](mailto:mklowder@alaska.edu) or 907-474-2427. Language access services, such as interpretation or translation of vital information, will be provided free of charge to individuals with limited English proficiency upon request to [amnorris2@alaska.edu](mailto:amnorris2@alaska.edu).

The University of Alaska (<http://www.alaska.edu/alaska>) is an equal opportunity/equal access employer and educational institution. The university is committed to a policy of nondiscrimination (<http://www.alaska.edu/nondiscrimination>) against individuals on the basis of any legally protected status.



COOPERATIVE EXTENSION SERVICE  
University of Alaska Fairbanks

## 4-H Camp Counselor JOB DESCRIPTION

### DUTIES:

1. Be responsible for health, welfare and safety of campers.
2. Supervise cabin group during nonscheduled time.
3. Supervise all duties of cabin group, such as KP, cleaning showers, bathrooms, cabin, etc.
4. Carry out duties as assigned by director or other adult staff.
5. Assist with and participate in the discovery group learning phase of the program.
6. Take part in planning evening recreation activities, campfires, etc.
7. Be in your cabin each night at "quiet time."

### RESPONSIBILITIES:

1. Be enthusiastically involved in camp.
2. Be familiar with the objectives of camp.
3. Establish and maintain a rapport with your cabin group.
4. Get to know each camper.
5. Encourage camper participation in activities and educational programs.
6. Promote respect for Twin Bears camp facility and natural surroundings.
7. Keep camper morale high.
8. Lead by being a good example.
9. Deal with discipline and report serious problems to director.
10. Show NO favoritism.
11. Contact the director or nurse at first signs of injury, illness or irregularities with campers or self.
12. Maintain good sense of humor; do not lose temper.
13. See that both you and your cabin group get enough sleep.
14. Maintain communications with staff.
15. Be responsible for keeping cabin clean and orderly.





## 4-H Camp Counselor APPLICATION

There is required counselor training: Dates and times will be identified prior to each camp session.

- Qualifications:
1. Must be willing to follow all rules and behavioral recommendations.
  2. Must have completed 8th grade and above for Junior Jamboree Camp.\*
  3. Must have completed 6th grade and above for Cloverbud Camp.\*
  4. Must enjoy working with younger kids
  5. It is preferred, but not mandatory, that counselors are enrolled 4-H members.
  6. Must be able to attend all training sessions and camp.\*\*

*\*Exceptions are determined on a case-by-case interview.*

*\*\*If you cannot attend the training sessions, you must schedule an appointment with Marla Lowder to cover the material.*

Name \_\_\_\_\_ Grade just completed \_\_\_\_\_

Address \_\_\_\_\_ City \_\_\_\_\_

State/ZIP \_\_\_\_\_ Phone \_\_\_\_\_

List any camps and the years you attended as a camper: \_\_\_\_\_

\_\_\_\_\_

List all prior experience(s) you have been a counselor, year(s) or experience, name of camp(s), special duties, etc.: \_\_\_\_\_

\_\_\_\_\_

### ***List Expiration Dates***

Do you have an up-to-date Red Cross First Aid Card? \_\_\_\_\_ CPR Card? \_\_\_\_\_

Have you passed Red Cross Lifesaving? \_\_\_\_\_ Jr. \_\_\_\_\_ Sr. \_\_\_\_\_ WSI \_\_\_\_\_

List your hobbies and interests: \_\_\_\_\_

\_\_\_\_\_

List two people as references:

1. \_\_\_\_\_ Phone \_\_\_\_\_

2. \_\_\_\_\_ Phone \_\_\_\_\_

***(Application continues on next page!)***

**4-H Camp Counselor  
(APPLICATION CONT'D)**

Check all areas you have experience in:

- |  |                                       |                                    |
|--|---------------------------------------|------------------------------------|
| <input type="checkbox"/> Group games     | <input type="checkbox"/> Hikes        | <input type="checkbox"/> Canoeing  |
| <input type="checkbox"/> Crafts          | <input type="checkbox"/> Skits        | <input type="checkbox"/> Drama     |
| <input type="checkbox"/> Singing         | <input type="checkbox"/> Sports       | <input type="checkbox"/> Archery   |
| <input type="checkbox"/> Outdoor cooking | <input type="checkbox"/> Nature study | <input type="checkbox"/> Campfires |

Explain briefly your experience (include place, time period, year, etc.) as a learner and teacher in areas checked and any other areas that might be helpful in a camp or learning setting:

---

---

---

---

---

---

---

---

Write a short essay on why you want to be a counselor (include leadership experience, cooperative learning experiences, teaching experiences, etc.):

---

---

---

---

---

---

---

---

**Return application to:**  
**UAF Cooperative Extension Service**  
**Tanana District 4-H Program**  
**P.O. Box 758155**  
**Fairbanks, AK 99775-8155**  
  
**Fax: 474-6885**  
**Phone: 474-2427**

## 4-H Camp Counselor SELF-EVALUATION (GOOD AT — OK — LOUSY)

***“What you DO speaks so loudly that I cannot hear what you say.”  
~ Ralph Waldo Emerson***

NAME: \_\_\_\_\_

## 1. GOOD HEALTH AND VITALITY

- A. Energy to last a whole day with 10-12 campers.
- B. Good eating habits.
- C. Will make sure campers/counselors get enough sleep.

## 2. ACCEPTABLE TO OTHERS

- A. Dress to look nice yet practical.
- B. Clean in body and mind.
- C. Courteous, mannerly and friendly.
- D. Sense of humor, justice and fun.
- E. Cooperation (with directors, campers, counselors).

### **3. ADAPTABLE TO CAMP LIFE**

- A. Love children — all types.
- B. Capacity to accept responsibility and to work as a member of the group.
- C. Ability to be at home in the out-of-doors.
- D. Ability to teach skills.
- E. Understand the needs of campers; places their needs ahead of personal desires during camp.

**(Self-Evaluation continues on next page!)**



## 4-H Camp Counselor (SELF-EVALUATION CONT'D)

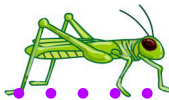
#### 4. EMOTIONAL MATURITY

- A. Good moral character and integrity.
- B. Accept suggestions and carry them out.
- C. Do not have emotional outbursts (anger, tears, etc.).
- D. Do not get homesick.
- E. Follow through and don't have to be reminded.
- F. Stand by convictions — not misguided by others.
- G. Ability to be "father/mother" for a week and "deal" with a cabin-full of campers.
- H. Know when I am "beyond my depth" and consult with adult staff.
- I. Have high standards in regard to coeducational activities and maintains them.

## 5. RESOURCES

- A. Conversation — use and encourage clean language and show high respect for all in words and deeds.
- B. Games — can teach several for camp age group.
- C. Crafts — interested in learning skills and helping campers achieve.
- D. Nature lore — knowledge of and interest in nature.
- E. Athletics — skill in at least one camp sport.
- F. Music — can lead group singing, sing while others are leading and encourage campers to sing.

[illegible]



# CLOVERBUD DAY CAMP

July 14 - 16, 2025

UAF Georgeson Botanical Garden



This day camp offers an out-of-doors adventure for children ages 5-8. It provides the fun of camp with the security of evenings at home. The program runs July 14-16, 9 a.m.-1 p.m., at the Georgeson Botanical Garden, located on UAF Campus.

Nature observations, crafts, games and educational adventures are designed to the interest and attention span of this age group. FUN is the key ingredient! Staff will include the 4-H agent, a certified leader, volunteer junior teens ages 12 and up, and resource people from the community. Hope to see you in the garden!

## DROP OFF/PICK UP:

- Day camp begins at 9 a.m.
- Pick up is at 1 p.m.

## WHAT TO BRING:

- Sack lunch (beverages and snacks provided)
- Jacket
- Rain boots
- Potluck family picnic on last day!



Play,  
Learn



and  
Grow...

Together!

## REGISTRATION FEES:

- 4-H member — \$40
- Non-4-H member — \$50
- Registration deadline — July 8
- Late fee — \$15
- Limit — 25 day campers

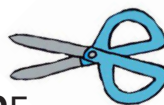


## INFORMATION:

- Tanana District Extension Office  
907-474-1530 or 907-474-2427



**REGISTER BY JULY 7! (\$15-late fee charged after July 7!)**



## REGISTRATION FORM — CLOVERBUD DAY CAMP 2025

Please complete, detach and return registration form by July 7. **Be sure to include the Emergency & Medical/Health Information Form and the Media and Information Release Form on next 2 pages!** Mail **all three forms** and payment to: 4-H Cloverbud Day Camp, UAF Cooperative Extension Service, P.O. Box 758155, Fairbanks, AK 99775-8155. For questions, call 907-474-1530 or 907-474-2427. Thank you!



Camper's Name: \_\_\_\_\_ Gender: \_\_\_\_\_ Age: \_\_\_\_\_

Mailing Address: \_\_\_\_\_ City: \_\_\_\_\_ ZIP: \_\_\_\_\_

Parent/Guardian Name: \_\_\_\_\_ Home Phone: \_\_\_\_\_ Work Phone: \_\_\_\_\_

Email: \_\_\_\_\_

Are you currently enrolled as a 4-H member? \_\_\_\_\_ Yes \_\_\_\_\_ No

Check fee enclosed: \_\_\_\_\_ \$40 4-H member  
 \_\_\_\_\_ \$50 Non-4-H member  
 \_\_\_\_\_ \$15-late fee (after July 7)

**TOTAL DUE: \$ \_\_\_\_\_ (Make checks payable to Tanana District 4-H Leaders Council.)**

**PLEASE  
PRINT  
CLEARLY!  
Thank you!**



Accommodation requests related to a disability should be made five business days in advance to Marla Lowder at 907-474-2427. Language access services, such as interpretation or translation of vital information, will be provided free of charge to individuals with limited English proficiency upon request to amnorris2@alaska.edu. The University of Alaska (<http://www.alaska.edu/alaska>) is an equal opportunity/equal access employer and educational institution. The university is committed to a policy of nondiscrimination (<http://www.alaska.edu/nondiscrimination>) against individuals on the basis of any legally protected status. This work is supported by the U.S. Department of Agriculture's National Institute of Food and Agriculture.



# REQUIRED FOR CLOVERBUD CAMP!

## Emergency & Medical / Health Information

Name \_\_\_\_\_ Birth date \_\_\_\_\_ Gender \_\_\_\_\_ Age \_\_\_\_\_  
 Parent or guardian \_\_\_\_\_ Email \_\_\_\_\_  
 Mailing address \_\_\_\_\_  
 Physical address \_\_\_\_\_  
 Home phone \_\_\_\_\_ Work phone \_\_\_\_\_ Cell phone \_\_\_\_\_

### Relatives or friends to act in my behalf, in case of emergency, if I cannot be reached:

|   |                       |   |                       |
|---|-----------------------|---|-----------------------|
| _____ Emergency contact name/relationship |                       | _____ Emergency contact name/relationship |                       |
| _____ Home phone                          | _____ Alternate phone | _____ Home phone                          | _____ Alternate phone |
| _____ Address                             |                       | _____ Address                             |                       |

Family physician \_\_\_\_\_ Phone \_\_\_\_\_

Under doctor's care now? \_\_\_\_\_ If yes, please explain on back.

Prescribed medicine \_\_\_\_\_

**(All meds must be turned in to chaperone or camp nurse.)**

**Note:** If bringing medications to the event or program, please make sure that your name is on them and that dosage directions are clearly indicated.

Allergies to medications/foods/insects/other? \_\_\_\_\_ List \_\_\_\_\_

### Health History: Is youth subject to: Indicate YES or NO

|                      |                                   |                                |                              |
|----------------------|-----------------------------------|--------------------------------|------------------------------|
| _____ Hernia         | _____ Hay fever                   | _____ Nervous disorders        | _____ Asthma                 |
| _____ Frequent colds | _____ Fainting spells             | _____ Sleepwalking             | _____ Ear/sinus              |
| _____ Allergies      | _____ Insect stings               | _____ Drug sensitivity         | _____ Enuresis (bed wetting) |
| _____ Epilepsy       | _____ Heart trouble               | _____ Diabetes (take insulin?) |                              |
| _____ Food allergies | _____ Bleeding/clotting disorders |                                |                              |

If **YES** on any of the above, please explain \_\_\_\_\_

### Has the youth had:

|                           |                      |                       |
|---------------------------|----------------------|-----------------------|
| _____ Poliomyelitis       | _____ Hay fever      | _____ Rheumatic fever |
| _____ Appendicitis attack | _____ Measles        | _____ Mumps           |
| _____ Chicken pox         | _____ Whooping cough | _____ Scarlet fever   |

Is the youth pregnant? \_\_\_\_\_ Date of last tetanus booster: \_\_\_\_\_

Identify any physical/emotional problems that would prevent full participation in the program. \_\_\_\_\_

**Emergency Authorization:** I hereby give my permission to the medical staff selected by the Cooperative Extension Service faculty/staff to order x-rays, routine tests and treatment for the above named youth. In the event I, or one of the above named designees cannot be reached in an emergency, I hereby give my consent to emergency medical treatment, hospitalization or other medical treatment as needed. I will assume all financial obligations incurred if not covered by insurance.

\_\_\_\_\_  
*Signature of parent/guardian* \_\_\_\_\_  
*Date*

Leaders should keep a copy of this form to have available when they are with club members.



## REQUIRED FOR CLOVERBUD CAMP!

### MEDIA AND INFORMATION RELEASE

I give National 4-H Council, University of Alaska Fairbanks (UAF), Cooperative Extension Service, USDA/CSREES, 4-H Clubs and Programs, its nominees, agents, and assigns, permission to photograph, videotape or record me and to use the photographs, videotapes, film or audio recording in print and electronic publications, video broadcasts, radio broadcasts or any similar electronic and mechanical means. I agree that the photographs, including negatives, slides and prints or any other presentation of the images, are the property of UAF. I waive any right I may have to inspect and/or approve the finished product in which the images may be used. By signing this form, I intend to release and discharge UAF from any and all claims that I may have and agree to hold harmless and defend UAF from liability arising from claims or litigation arising from its use of my image or voice.

---

Name of person photographed, recorded or interviewed (Please Print)

Age (if minor)

---

Street Address, City, State and Zip Code

---

Signature

Date

Consent of parent or legal guardian if above individual is a minor.

I consent and agree, individually and, as a parent or legal guardian of the minor named above, to the foregoing terms and provision. I hereby warrant that I am of full age and have every right to contract for the minor in the above regard. I state further that I have read the above media and information release and that I am fully familiar with the contents.

---

Signature

Relationship

The University of Alaska (<http://www.alaska.edu/alaska>) is an equal opportunity/equal access employer and educational institution. The university is committed to a policy of nondiscrimination (<http://www.alaska.edu/nondiscrimination>) against individuals on the basis of any legally protected status.

## 4-H FASHION REVUE/FAVORITE OUTFIT REGISTRATION FORM

Must register during non-perishable entry day.

Name(s) \_\_\_\_\_

Phone \_\_\_\_\_ Email \_\_\_\_\_

Please indicate age \_\_\_\_\_ division:

\_\_\_\_ Cloverbud (5-7 years) \_\_\_\_ Junior (8-11 years) \_\_\_\_ Intermediate (12-14 years) \_\_\_\_ Senior (15-18 years)

Please indicate class:

\_\_\_\_ Fashion Revue (self-made) \_\_\_\_ Favorite Outfit (self- or ready-made)

• If entering both classes, please fill out a separate form for each outfit. •

### • Basic Information:

Color(s) \_\_\_\_\_ (Example: cherry red)

Texture/Fabric \_\_\_\_\_ (Example: silk, wool, knit, etc.)

Style/Theme \_\_\_\_\_ (Example: sport, school, etc.)

### • Additional Information:

Description of Garment (Look in fashion magazines or back of pattern envelope for ideas.) \_\_\_\_\_

Accessories (Don't forget things you carry, shoes, special trim, jewelry, etc.) \_\_\_\_\_

### • Tell us about:

Why did you choose this outfit? \_\_\_\_\_

Changes, problems encountered or decisions you made while making or choosing the outfit: \_\_\_\_\_

What help did you receive from others? \_\_\_\_\_

Other 4-H projects? \_\_\_\_\_

School activities? \_\_\_\_\_

Outside interests, hobbies? \_\_\_\_\_

Plans for the future? \_\_\_\_\_

• Use the above information to write/type a complete commentary about yourself and your garment that can be used by the fashion narrator.



## 4-H BAKE-OFF & FAVORITE FOODS CONTEST REGISTRATION

**Must register during non-perishable entry day.**

Name \_\_\_\_\_

Phone \_\_\_\_\_ Email \_\_\_\_\_

**Please indicate age \_\_\_\_\_ and:**

\_\_\_ Cloverbud (5-7 years) \_\_\_ Junior (8-11 years) \_\_\_ Intermediate (12-14 years) \_\_\_ Senior (15-18 years)

**Check contest(s) entering:**

\_\_\_ Favorite Foods

\_\_\_ Bake-Off

- Cloverbud & Junior: cookie, muffins, cornbread or biscuits
- Intermediate: quick bread or cake
- Senior: pie or yeast bread
- **Please attach a copy of your recipe.**

**List any conflicts to be avoided in scheduling your time. Be specific on times that you are NOT available:**

---

---

---

## 4-H BAKE-OFF & FAVORITE FOODS CONTEST REGISTRATION

**Must register during non-perishable entry day.**

Name \_\_\_\_\_

Phone \_\_\_\_\_ Email \_\_\_\_\_

**Please indicate age \_\_\_\_\_ and:**

\_\_\_ Cloverbud (5-7 years) \_\_\_ Junior (8-11 years) \_\_\_ Intermediate (12-14 year) \_\_\_ Senior (15-18 years)

**Check contest(s) entering:**

\_\_\_ Favorite Foods

\_\_\_ Bake-Off

- Cloverbud & Junior: cookie, muffins, cornbread or biscuits
- Intermediate: quick bread or cake
- Senior: pie or yeast bread
- **Please attach a copy of your recipe.**

**List any conflicts to be avoided in scheduling your time. Be specific on times that you are NOT available:**

---

---

**4-H HOME GARDEN TOUR REGISTRATION**

**Must register during non-perishable entry day.**

**The Garden Tour will start at approximately 4 p.m.**

**You will be notified of your time.**

**Name(s)**\_\_\_\_\_ **Phone**\_\_\_\_\_

**Email**\_\_\_\_\_

**Please indicate age**\_\_\_\_\_ **and:**

\_\_\_\_Cloverbud (5-7 years) \_\_\_\_Junior (8-11 years) \_\_\_\_Intermediate (12-14 years) \_\_\_\_Senior (15-18 years)

---

**4-H HOME GARDEN TOUR REGISTRATION**

**Must register during non-perishable entry day.**

**The Garden Tour will start at approximately 4 p.m.**

**You will be notified of your time.**

**Name(s)**\_\_\_\_\_ **Phone**\_\_\_\_\_

**Email**\_\_\_\_\_

**Please indicate age**\_\_\_\_\_ **and:**

\_\_\_\_Cloverbud (5-7 years) \_\_\_\_Junior (8-11 years) \_\_\_\_Intermediate (12-14 years) \_\_\_\_Senior (15-18 years)

---

**4-H HOME GARDEN TOUR REGISTRATION**

**Must register during non-perishable entry day.**

**The Garden Tour will start at approximately 4 p.m.**

**You will be notified of your time.**

**Name(s)**\_\_\_\_\_ **Phone**\_\_\_\_\_

**Email**\_\_\_\_\_

**Please indicate age**\_\_\_\_\_ **and:**

\_\_\_\_Cloverbud (5-7 years) \_\_\_\_Junior (8-11 years) \_\_\_\_Intermediate (12-14 years) \_\_\_\_Senior (15-18 years)

#### 4-H PRESENTATION/PERFORMING ARTS REGISTRATION

Must register during non-perishable entry day.

Name(s) \_\_\_\_\_ Phone \_\_\_\_\_

Email \_\_\_\_\_

Please indicate age \_\_\_\_\_ and division:

\_\_\_\_ Cloverbud (5-7 years) \_\_\_\_ Junior (8-11 years) \_\_\_\_ Intermediate (12-14 years) \_\_\_\_ Senior (15-18 years)

**Name of Presentation or Performance:**

**Performance (song, dance, poem, etc.) or presentation (demonstration, illustrated talk, etc.):**

**Length of Performance/Presentation (number of minutes):**

---

#### 4-H PRESENTATION/PERFORMING ARTS REGISTRATION

Must register during non-perishable entry day.

Name(s) \_\_\_\_\_ Phone \_\_\_\_\_

Email \_\_\_\_\_

Please indicate age \_\_\_\_\_ and division:

\_\_\_\_ Cloverbud (5-7 years) \_\_\_\_ Junior (8-11 years) \_\_\_\_ Intermediate (12-14 years) \_\_\_\_ Senior (15-18 years)

**Name of Presentation or Performance:**

**Performance (song, dance, poem, etc.) or presentation (demonstration, illustrated talk, etc.):**

**Length of Performance/Presentation (number of minutes):**

### 4-H SEWING CHALLENGE

Contest will be in Room 154, UAF University Park Building.

Must register during non-perishable entry day.

Name: \_\_\_\_\_ Phone \_\_\_\_\_

Email: \_\_\_\_\_ Class and Lot # \_\_\_\_\_

Years in sewing project: \_\_\_\_\_

Please indicate age \_\_\_\_\_ and:

\_\_\_\_\_ Cloverbud (5-7 years) \_\_\_\_\_ Junior (8-11 years) \_\_\_\_\_ Intermediate (12-14 year) \_\_\_\_\_ Senior (15-18 years)

---

### 4-H SEWING CHALLENGE

Contest will be in Room 154, UAF University Park Building.

Must register during non-perishable entry day.

Name: \_\_\_\_\_ Phone \_\_\_\_\_

Email: \_\_\_\_\_ Class and Lot # \_\_\_\_\_

Years in sewing project: \_\_\_\_\_

Please indicate age \_\_\_\_\_ and:

\_\_\_\_\_ Cloverbud (5-7 years) \_\_\_\_\_ Junior (8-11 years) \_\_\_\_\_ Intermediate (12-14 year) \_\_\_\_\_ Senior (15-18 years)

---

### 4-H SEWING CHALLENGE

Contest will be in Room 154, UAF University Park Building.

Must register during non-perishable entry day.

Name: \_\_\_\_\_ Phone \_\_\_\_\_

Email: \_\_\_\_\_ Class and Lot # \_\_\_\_\_

Years in sewing project: \_\_\_\_\_

Please indicate age \_\_\_\_\_ and:

\_\_\_\_\_ Cloverbud (5-7 years) \_\_\_\_\_ Junior (8-11 years) \_\_\_\_\_ Intermediate (12-14 year) \_\_\_\_\_ Senior (15-18 years)





COOPERATIVE  
EXTENSION  
SERVICE



AGES  
5-18

4H

FREE  
RANGER  
CLUB



4-H EMPOWERS YOUTH TO REACH THEIR FULL POTENTIAL,  
WORKING AND LEARNING IN PARTNERSHIP WITH CARING ADULTS

MONTHLY MEETINGS  
2ND TUESDAY OF THE MONTH  
FROM 4:00 TO 5:30

COME TRY A MEETING

READY TO JOIN:

[HTTPS://WWW.UAF.EDU/CES/4-H/JOIN.PHP](https://www.uaf.edu/ces/4-h/join.php)

\$26  
A YEAR

UPARK UNIVERSITY BLDG  
ROOM 108



ACTIVITIES:

YOUTH LEADERSHIP  
COMMUNITY SERVICE  
LIVESTOCK  
COOKING  
PROJECTS  
SOCIALIZING

Accommodation requests related to a disability should be made five business days in advance to Marla Lowder at [mklowder@alaska.edu](mailto:mklowder@alaska.edu), 907-474-2427. Language access services, such as interpretation or translation of vital information, will be provided free of charge to individuals with limited English proficiency upon request to [amnorris2@alaska.edu](mailto:amnorris2@alaska.edu). The University of Alaska (<http://www.alaska.edu/alaska>) is an equal opportunity/equal access employer and educational institution. The university is committed to a policy of nondiscrimination (<http://www.alaska.edu/nondiscrimination>) against individuals on the basis of any legally protected status. This work is supported by the U.S. Department of Agriculture's National Institute of Food and Agriculture.

# 4-H HORSE CLINIC WITH ESTHER SUTHERLAND



Join Esther Sutherland for a riding clinic! Esther has extensive experience with both 4-H and Pony Club. She works with riders of all levels and can help improve training techniques, rider position, and understanding of riding theory. Please note that participants must have their own horse.

Register by  
5 p.m. on June 1

**June 12 Showmanship & English Flat**  
**June 13 Western & Trail**  
**June 14 Jumping & Pole Work**

Cost:  
Individual Day - \$70  
All 3 Days - \$180  
Private Lesson on June 15th - \$50



Sign-up here



**Questions? Contact Kaitlyn Osborn at 907-378-6058 or [kaitlynelizabethosborn@gmail.com](mailto:kaitlynelizabethosborn@gmail.com)**

Accommodation requests related to a disability should be made five business days in advance to Marla Lowder at 907-474-2427 or [mklowder@alaska.edu](mailto:mklowder@alaska.edu). Language access services, such as interpretation or translation of vital information, will be provided free of charge to individuals with limited English proficiency upon request to [amnorris2@alaska.edu](mailto:amnorris2@alaska.edu). The University of Alaska (<http://www.alaska.edu/alaska>) is an equal opportunity/ equal access employer and educational institution. The university is committed to a policy of nondiscrimination (<http://www.alaska.edu/nondiscrimination>) against individuals on the basis of any legally protected status. This work is supported by the U.S. Department of Agriculture's National Institute of Food and Agriculture.



# 2025 MARKET LIVESTOCK UPDATE

Guidelines according to the state veterinarian, Dr. Sarah Coburn

## IMPORTANT TO NOTE!

For each vaccine listed, be sure to note whether it is **SUGGESTED** or **REQUIRED** for your animal. If the vaccine is required, proof that it was administered must be submitted on entry day.

Proof consists of the following:

- Name of vaccine
- Manufacturer
- Lot number
- Expiration date: Vaccine shall not be expired when administered.
- Date vaccine administered
- Who administered vaccine

## Vaccinations — Suggested or Required?

### Cattle, Feeder Beef and Bison

IBR-Bovine rhinotracheitis — *required*

BVD-Bovine virus diarrhea — *required*

PI-3-Parainfluenza 3 — *required*

Wart vaccine — *suggested*

### Reindeer

Clostridial, 7-way — *required*

Respiratory, 3-way — *required*

IBR, BVD, PI3 — *required*

### Sheep and Goats

CDT-clostridium perfringens type D & tetanus — *suggested*

### Swine

Erysipelas — *required* (consistent with manufacturer's recommendations)

Things the veterinarian will look for on delivery day: warts, enlarged external lymph nodes (especially on sheep and goats), infectious or contagious diseases (including external parasites), clinical signs of dermatitis (ringworm) and evidence of castration, when applicable.

You should have the animal in the best physical shape prior to going to the fair. This includes providing good nutrition, vaccinations and parasite control. These precautions will enable the animal to have a strong immune system and avoid getting ill when they are exposed to the other animals and the stress of being away from home and at the fair.



## Important Dates to Remember!

**April 15: Mandatory Market Livestock Participant Meeting**, 7 p.m., at 4-H office. Parent or guardian must attend. Must attend this meeting if you did not attend the other meeting on Feb. 15.

**April 27-May 5: Weigh-in Week, Large Animals.** Beginning weights of all large animal market projects (finished beef, feeder steer, swine, sheep and goat) must be turned in to 4-H office along with full-body, close-up picture of animal, date picture taken and 4-H tag number.

**May 2: Organized Weigh-in, Large Animals**, 4-8 p.m., at Tanana Valley State Fairgrounds, for those who wish to weigh their animals. Tagging and photos also to be available.

**Date TBD: Committee-sponsored Livestock Showmanship Clinic.** Large livestock is Saturday and poultry, rabbits and cavy are Sunday.

**July 1: Check on any medicated feeds and all medications** for withdrawal dates for all market animals.

**July 6-14: Weigh-in Week, Small Animals.** Beginning weights of all small animal market projects (turkeys, geese, ducks, chickens, rabbits and cavy) must be turned in to 4-H office along with full-body, close-up picture of animal, date picture taken and 4-H band number (tattoo number for rabbits).

**July 11: Organized Weigh-in, Turkeys, Geese and Ducks**, 6-7 p.m., at Tanana Valley Fairgrounds, for those who wish to weigh their animals. Banding and photos also to be available.

**July 19: Entry Day**, 1-6 p.m. at Lergen Barn. Buyer contacts and record books due.

**July 21: Barn Set-up Day**; potluck when work done, 5 p.m.

**July 24: Delivery of Animals to Fair.** Small animals, 2-8 p.m., and large animals, 4-8 p.m. *Remember, there will be a vet check before animals can be brought into the barns.*

**July 25: Mandatory Barn Meeting**, 11 a.m.

**July 25: Official Fair Weigh-in**, noon-2 p.m.

**Aug. 1: Mandatory Barn Meeting**, 11 a.m.

**Aug. 3: Animal Pick-up Day and Barn Clean-up**, 7 a.m.

**Aug. 17: Small animals delivered to buyer** unless other arrangements with buyer are made.

**Sept. 10: Record books turned in to 4-H leader/FFA advisor** in order to be eligible for a market project next year.



**Questions? Contact Marla Lowder at 907-474-2450 or [mklowder@alaska.edu](mailto:mklowder@alaska.edu).**