

Equipment Looking for a New Home

All of the attached equipment is from the University of Alaska Fairbanks Sitka Forest Products Program. The equipment is currently located at the UAF Matanuska Experiment Farm & Extension Center in Palmer, Alaska.

Purchasing

- If an individual or a company wants to buy any of the attached equipment, we can sell it through the Gov. Deals online auction site (see <https://www.govdeals.com/>).
- If a nonprofit organization wants any of the attached equipment, we can simply transfer it to that organization.

About the Equipment

The running condition of all items is unknown. Attached you will find a picture of the equipment along with stock pictures from the internet showing exactly what the item is.

Contact Information

We hope this equipment finds a new home where someone can use it! For more information or to purchase an item, please contact:

Jim Ericksen
(907)745-4866
Jlericksen@alaska.edu

List of Equipment

- 40ft. Kiln
- CKM Finger Joint System
- Metriguard Tension Proof Tester - model 403
- Jeffer JC-312 Profile Grinder
- Metriguard Bending Proof Tester - model 312
- 4-Sided Planer
- Blower
- Dust Collector
- Bridgewood 16" Planer
- Woods Universal Cutter Head Grinder
- Bridgewood 16" Planer
- Yates American 24" Planer - model B244
- Clamps

Kiln

Description: The Kiln appears to be a repurposed 40ft Connex. The condition of the Heat plant and electrical components is unknown.







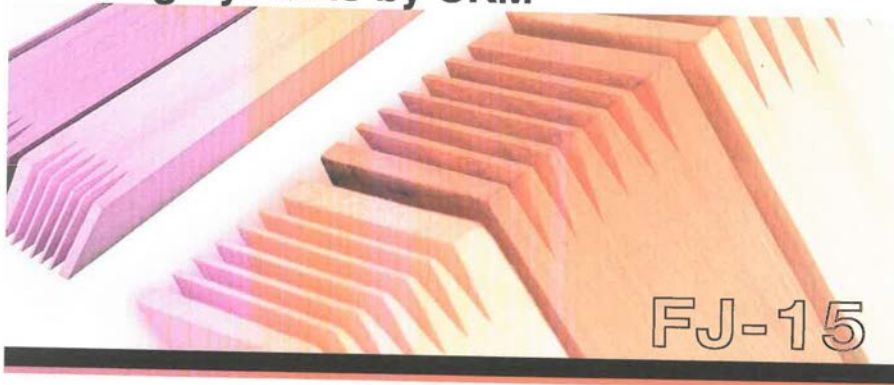
Finger Joining System by CKM

Description: The units are CKM A-06 (Assemble Press), CKM-F-C52 (Finger Shaper), and a gluing unit. Current working conditions are unknown.

CKM
Quality & Service

CHENG KUANG WOOD MACHINERY WORKS CO., LTD.
387, Shouei Yuan Rd., Feng Yuan, Taichung, Taiwan.
FAX: 886-4-527 5507 TEL: 886-4-524 1105-7

Reclaim Valuable Wasted Wood with Finger Jointing Systems by CKM

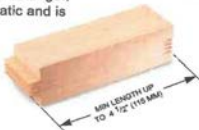


FJ-15 series: Advanced Manual Systems

- Simple in design, easy to operate and requires very little maintenance.
- Can do horizontal or vertical jointing up to 6 inches.
- High tolerance of the dimension of raw material, can join block as short as 4.5".
- Spirally stacked carbide tipped cutters are set up, cuts smoothly, and virtually eliminates rip-out, tear-out and vibration.

F-A07 ASSEMBLE PRESS

- ▶ This Assemble Press consists of an automatic feed unit, a cut-off saw, and a hydraulic press. It can assemble up to 2 pieces of 14.5 feet board per minute.
- ▶ The cycle of feeding, cutting off at length, pressing and ejection is automatic and is controlled by PLC.
- ▶ The powerful hydraulic press ensures tight and strong joint.



F-C51 (Left) & F-C52 (Right) FINGER SHAPER

- ▶ The Finger Shaper consists of a trim saw, a shaper, and a moving table which cuts the blocks in batches.
- ▶ The batch system has proven to be the most effective system. The batch system allows usage of short blocks as well as longer lengths. The system also allows the same machine to produce vertical and horizontal joints.



- ▶ Spirally stacked carbide tipped cutters are easy to set up cuts smoothly, and virtually eliminates rip-out, tear-out and vibration.

FINGER SHAPER

MODEL	F-C51 (Left) / F-C52 (Right)	
Max: available width working table	17 21/32"	(450 mm)
Range of material length	4 1/2" ~ 39 11/16"	(115~1000 mm)
Range of material width	1" ~ 6 9/32"	(25~160 mm)
POWER REQUIRED		
For trimming saw	5HP (3ph), 5HP (1ph)	
For finger cutter	10HP (3ph), 7 1/2HP (1ph)	
Dust outlet diameter	6" x 1, 4" x 2	
Machine dimensions (LxWxH)	70" x 33" x 55"	(1780 x 840 x 1400 mm)
Packing dimensions (LxWxL)	74" x 37" x 61"	(1880 x 940 x 1550 mm)
Net weight	740 Kgs	
Gross weight	820 Kgs	

GLUING UNIT

MODEL	F-G01	
Max: workpiece width	6"	(152 mm)
POWER REQUIRED		
	1/8 HP (3ph), 1/8 HP (1ph)	
Overall dimension (LxWxH)	24" x 16 1/2" x 33"	(610 x 420 x 840 mm)
Shipping dimension (LxWxH)	25 1/2" x 18 1/2" x 39 11/16"	(650 x 470 x 1000 mm)
Net weight	78.5 Kgs	
Gross weight	100 Kgs	

ASSEMBLE PRESS

MODEL	F-A07	
Available length of product	177"	4.5 M
Available thickness of product	2 13/32"	(60 mm)
Available width of product	6 9/32"	(160 mm)
Max: assembly pressure	0 ~ 100 kg/cm²	
Hydraulic power unit	5 HP (3ph), 3 HP (1ph)	
POWER REQUIRED		
For cut-off saw	5HP (3ph), 5 HP (1ph)	
Machine dimensions(LxWxH)	262" x 37 3/8" x 55"	(6650 x 950 x 1400 mm)
Packing dimensions (LxWxH)	291" x 42" x 61"	(7400 x 1065 x 1550 mm)
Net weight	1250 Kgs	
Gross weight	1350 Kgs	

Specifications, and design are subject to change without notice.

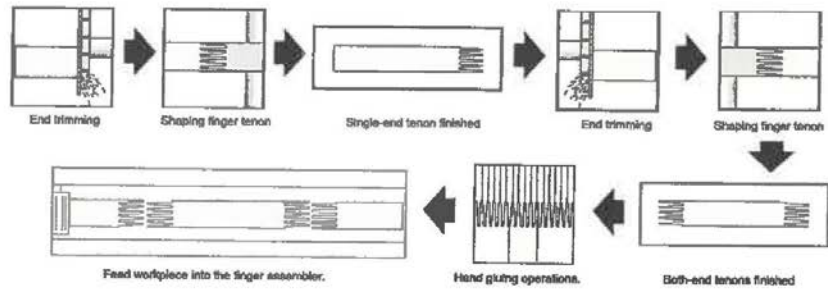
■ 5HP Air compressor is suggested.

■ Optional equipment: F-D05 roller table.

2/16/2021

FJ-15 Advance Manual Finger Jointing System

Production Flow Chart



DIMENSIONAL DRAWING







Metriguard Tension Proof Tester - Model 403

Description: Working condition unknown.

Model 403 Tension Proof Tester

Our most popular tension proof tester. The Model 403 tests lumber up to 2x12 in (38x286 mm) with tensile loads up to 100,000 lbs (440 kN). This machine can satisfy most of your tensile strength testing needs for structural lumber and composite materials.

- Largest tension proof tester with the patented wedge grip
- Flexible and easily changed gauge lengths
- Unlimited maximum specimen length
- Provides tensile quality control in MSR lumber production, qualifying the product for tensile strength rating marks in its grade stamp



Model 403 Tension Proof Tester

Description

- The Model 403 is our most popular tension proof tester for dimensional lumber.
- Tension tests lumber up to 2x12 in (38x286 mm) with up to 100,000 pounds (440 kN) of tensile force
- Patented wedge-grip clamps hold massive jaws which squeeze tight as the tensile force is increased
- Clamps have open ends so the length of the tested board is only limited by space in the room.
- Testing span from 1 ft (305 mm) to 12 ft (3660 mm) between the clamps.
- Custom testing spans may be specified at the time of order
- Set end clamp is easily moved by hand to increase or decrease gauge length
- Test material is inserted on-edge from either end of the machine
- Pneumatic closure system provides initial clamping force
- Two frame-mounted hydraulic cylinders provide tensile load
- Options are available for displaying the maximum load obtained while the specimen is loaded to failure.

The electronics unit for the Model 403 is clearly labeled and very easy to use. This unit requires a 115 Vac power source.

sales@metriguard.com

Metriguard

33

Model 403 Tension Proof Tester

403 Spare Kit English Units Version Shown (403-KIT-1004). Metric Unit Version Available (403-KIT-1005)

Item	Description	Part Number	Qty
1	Mounting plates with bolts	401-KIT-1001	1
2	Mounting plate with bolts	401-KIT-1002	1
3	Crimp pliers, handcranked (set of 4, not shown)	403-KIT-1001	0
4	Crimp pliers, self-green (set of 4, standard)	403-KIT-1002	1
5	Load cell connector, 8-pin socket	CON-PLU-1000	1
6	Panel meter, 3.5 digit LED 1/80IN	DIG-PAN-1004	1
7	Power Supply +15/-15	POW-DCC-1003	1
8	Switch, 15 position with wipers	PRN-15M	1
9	Print track board (10 pins)	PRN-15PT	1
10	Load cell amplifier board	PRN-15A	1
11	Load cell amplifier board, 100k English	PRN-15A	1
12	Potentiometer, 10K 10T 3/8 inch Bushing mount	RES-10T-1005	1
13	Load cell, 50k compression	SEN-575-1006	1



Top View of a Tension Calibration Link Assembly Installed.

Includes:

- Two wood-faced steel padlocks for insertion into the clamps, a tension load cell with steel pins for attachment to the padlocks, and a readout unit (SYS-ASM-1005).

sales@metriguard.com

Metriguard

35



Model 403 Tension Proof Tester

Specifications

General
The Model 403 Tension Proof Tester grips the test specimen at its ends, applies a test load by means of hydraulic cylinders, and measures the load applied. Each of the two clamps in the Model 403 contains a pair of polymer-surfaced steel grip plates, for a total of 4 grip plates. There are differences in the friction characteristics of the wood/grip interface for the different wood species and different polymer grip coatings. The hard orange polymer lasts longer than the soft green polymer, but the friction characteristics of the soft polymer are better. Polymer life has been found quite acceptable for the Model 403 even with the soft polymer, and new machines are provided with soft polymer grip plates unless specified otherwise at time of order. The grip plates are interchangeable and can be recoated with either hard or soft polymer.

Test Gauge Lengths..... 1 to 12 ft in 1 ft increments (305 to 3650 mm in 305 mm increments) between grips for 16 ft machine; 1 to 16 ft in 1 ft increments (305 to 4877 mm in 305 mm increments) between grips for 20 ft machine (Other gauge lengths available by special order.)

Maximum Tensile Force..... 100,000 lb (440 kN)

Tensile Force Actuation..... 10,000 psi (69 MPa) hydraulic cylinders

Maximum Tensile Stroke..... 4 in (102 mm)

Clamp Force Actuation..... From tensile force via split inclined plane

Initial Clamp Force..... Air cylinder: one on each clamp

Clamp Grip Length..... 24 in (610 mm)

Vertical Centering in Clamps..... Provided for material widths 1.5, 2.5, 3.5, 4.5, 5.5, 7.25, 9.25, and 11.25 in (38, 63.5, 89, 114, 140, 164, 235, and 286 mm)

Material Feed..... From either end of machine

Lumber Centerline Height..... 34 in (864 mm)

Test Material Size Range
Width..... Up to 11.75 in (290 mm)
Thickness..... Approx. 1.25 to 2.00 in (32 to 51 mm)
Length..... Greater than 5 ft (1524 mm) for full grip coverage (gauge length) + 2 x (grip length). Unlimited maximum length. Shorter lengths allowed with reduction in maximum force.

Power
Force Measurement System..... 115 Vac 50/60 Hz 2 amp (230 Vac available)
Pneumatic..... Clean shop air at 90 psi, 0.1 cubic ft/cycle
Hydraulic Power Unit..... 1/2-horsepower electric pump with gauge, pressure-compensated flow control valve, and a steel reservoir.


Pump Specifications
Maximum pressure..... 10,000 psi (69 MPa)
Oil flow at max pressure..... 17 in³/min (280 ml/min) retract, hold, metered advance and full advance.
Valve positions..... Pendant on/off switch
Electric control..... 1/2-hp, 50/60 Hz, single phase, 115 Vac standard, 230 Vac 50 Hz motor
Electric power..... Heating restrictions limit continuous testing to 30 boards followed by a 50% duty cycle.
Duty Cycle.....

Options

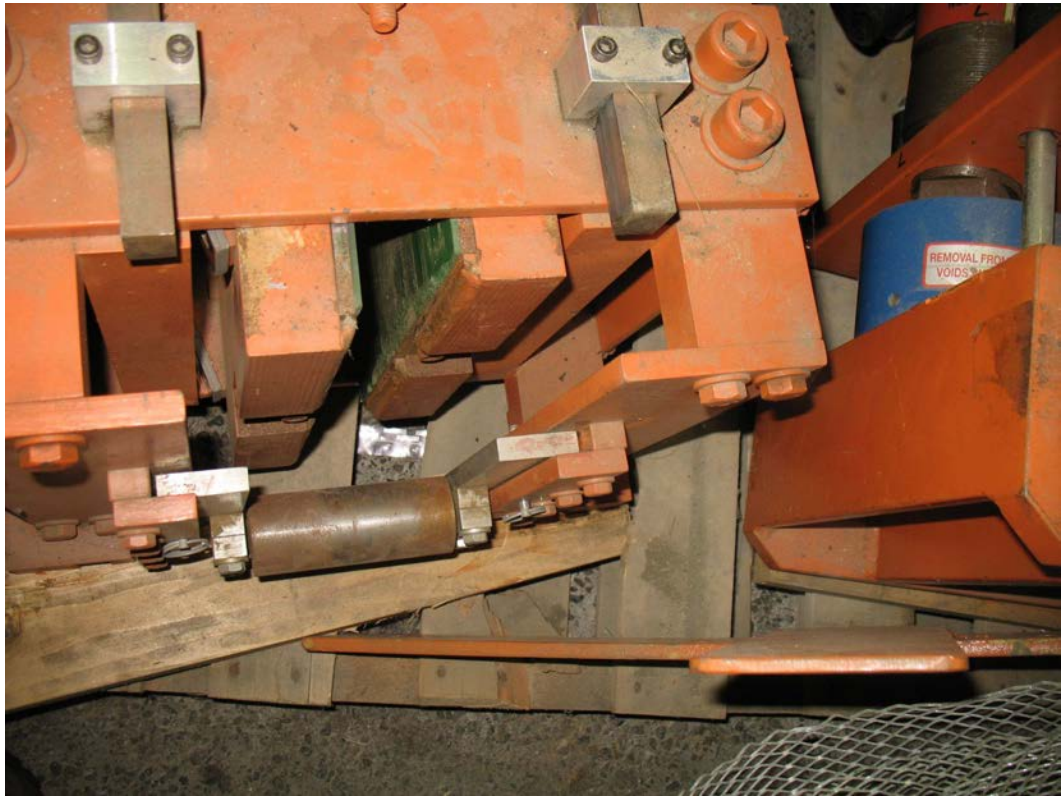
Standard Frame
Model 403 with 16-ft frame (4877 mm), 1/2-horsepower pump, and force measurement system. (403-BAS-1501)

Optional Frame
Model 403 with 20-ft frame (6096 mm), 1/2-horsepower pump, and force measurement system. (403-BAS-1502)

Tension Calibration Link
Includes two wood-faced steel paddles for insertion into the clamps; a tension load cell with steel pins for attachment to the paddles; and a readout unit. The tension calibration link, when inserted into the Model 403 Tension Proof Tester and brought up to load, gives a completely independent measurement of force for checking the force calibration up to 100,000 lbs (440 kN). (SVS-ASM-1005)

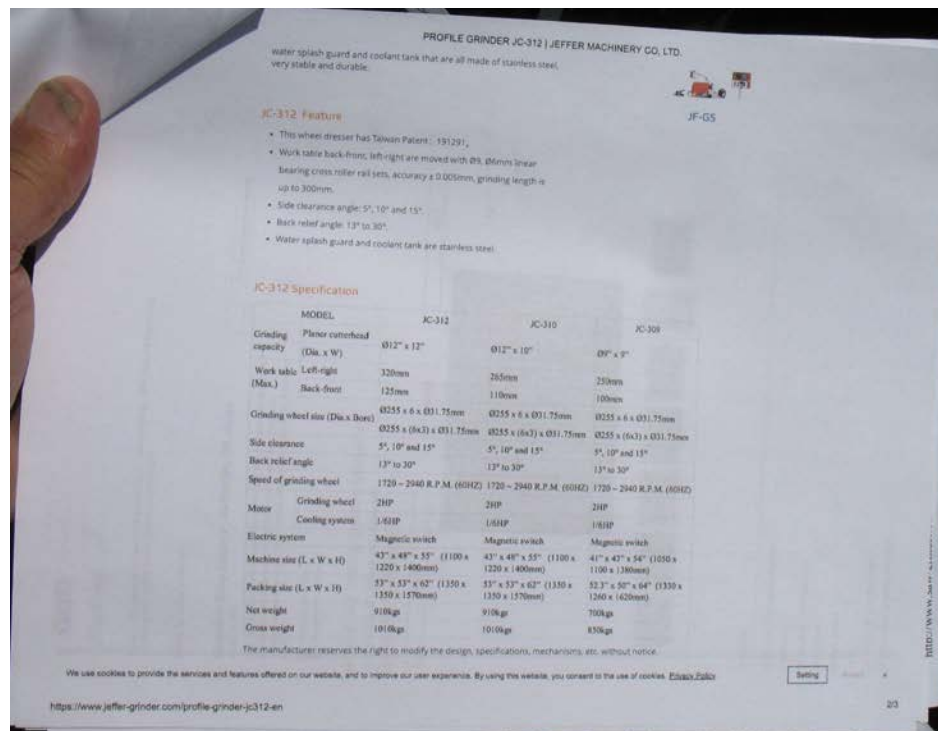

509-332-7526

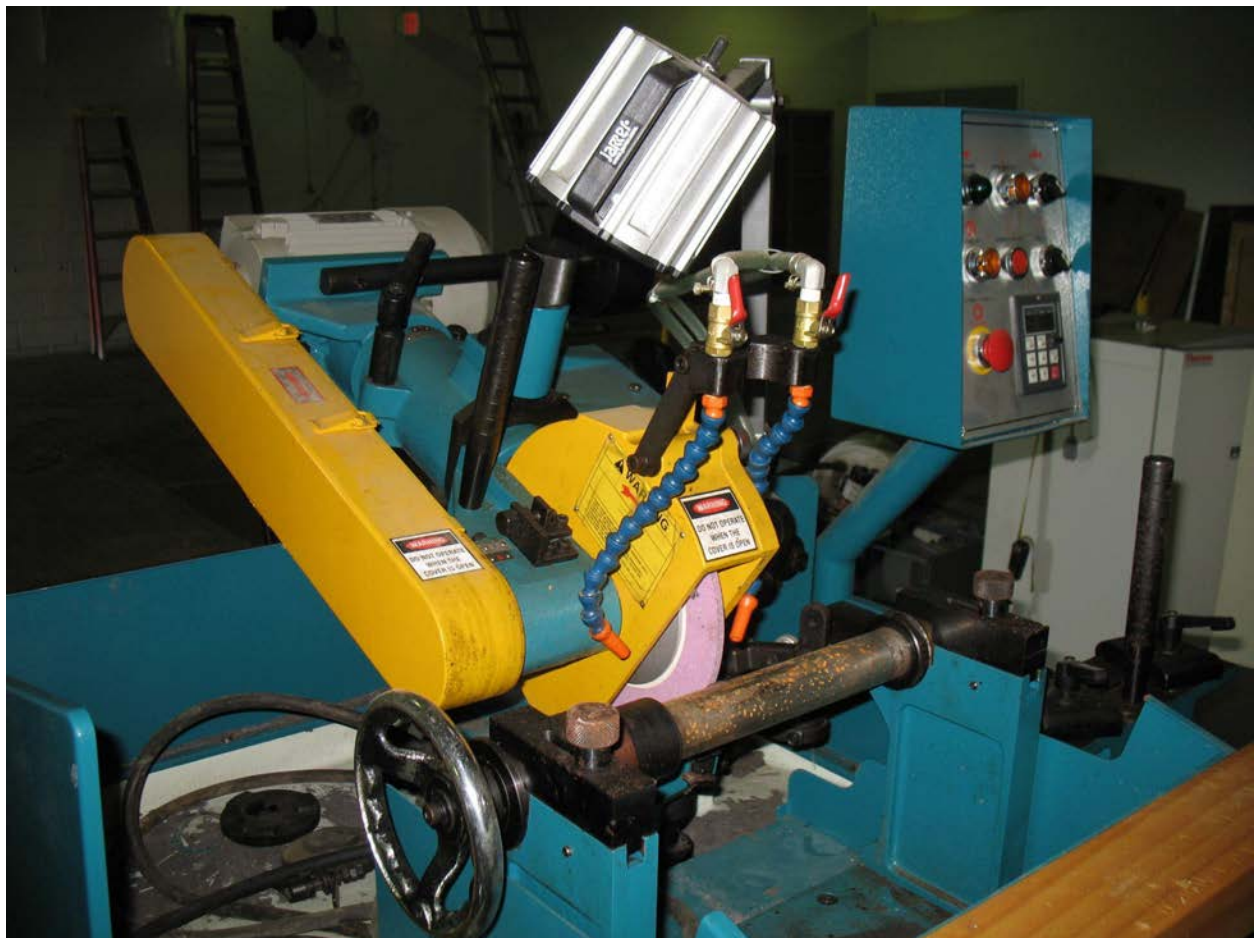




Jeffer JC-312 Profile Grinder

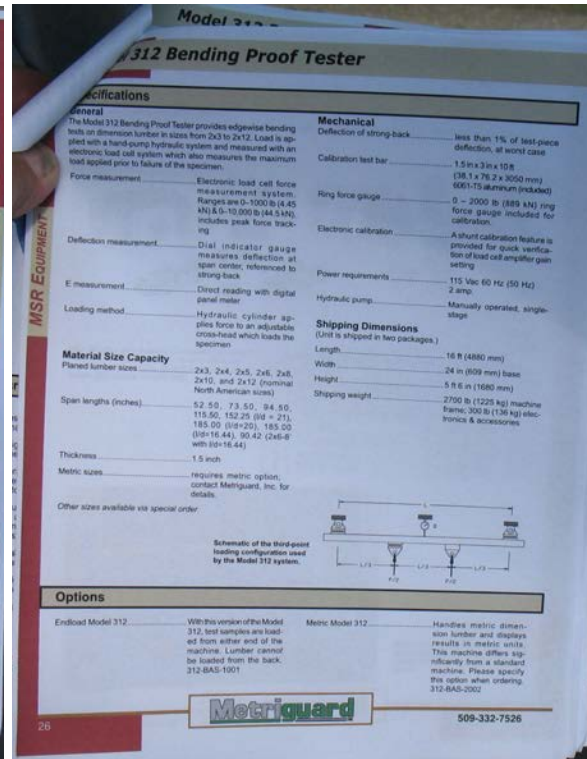
Description: Used for grinding and machining, molding blades, carving blades, etc. This has a 2 Hp motor.

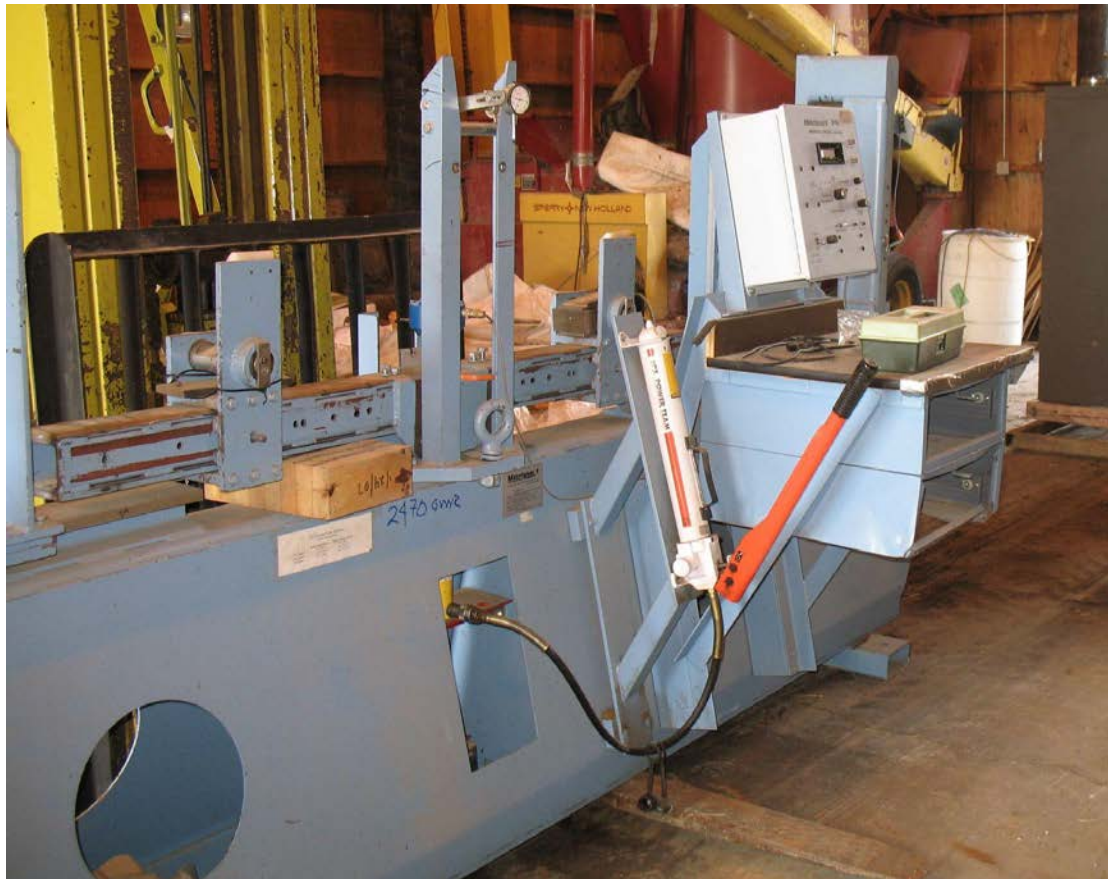




Metriguard Bending Proof Tester - Model 312

Description: Used for measuring modulus of elasticity and the ultimate bending strength of dimension lumber. Power requirements - 115 Vac





4-Sided Planer

Description: Manufacturer name unknown. This is a very heavy unit, and the working condition is unknown.







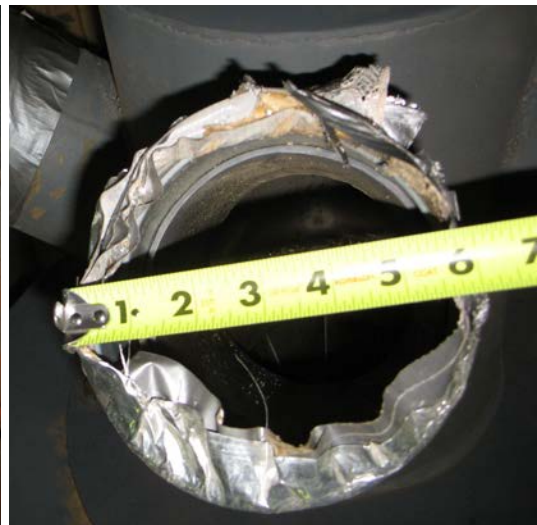
Blower

Description: This has a 5 h.p. Motor, 3 phase, 230/460 volts. Working conditions are unknown.



Dust Collector - Model PB-10052

Description: From the International Industrial Fan Inc. Operating RPM - 3550, Motor hp - 5, volts - 230/460, phase 3. Working condition unknown.



MODEL # 37-1000

SERIAL # 833-73-23

MAX RPM 3600

MAX TEMP 150°F

OPERATING RPM 3550

MOTOR HP 5

VOLTS 230/240

CYCLE

PH



WARNING: Improper use or maintenance of this unit may result in serious personal injury, or damage. Read and follow instructions **BEFORE** attempting periodic lubrication and service of fan. Explosive failure may result from exceeding maximum RPM or Maximum temperature. Do not operate without guards in place. Not for use in hazardous location.

INTERNATIONAL INDUSTRIAL FAN INC.

SOUTH BOSTON VIRGINIA 24592

For maintenance and operating instructions —
24 Hours/Day — Call 800-7-FANFAX

BEFORE START
FOR TIGHTEN
HAND TO MA
TRANSIT.

IF FAN IS DOWN
BEARINGS WITH
WHEEL PERIOD
FROM ACCUM

DO NOT OPER
INSTRUCTION

LUBRICATE BE

NOT FOR USE

DO NOT OPER

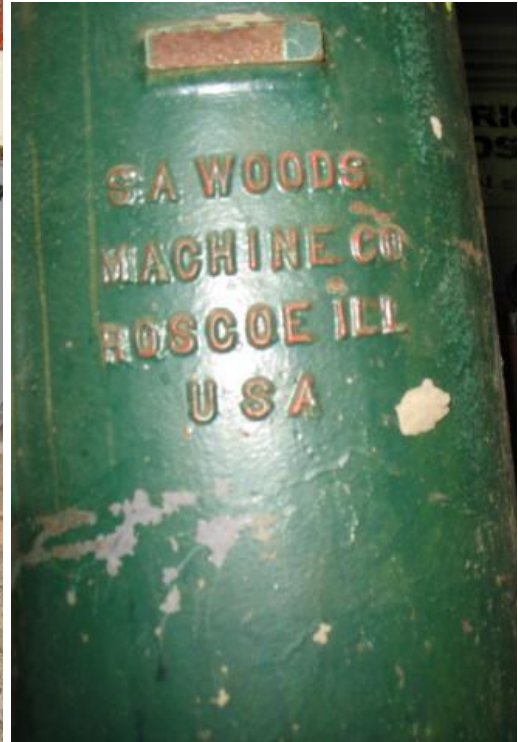
Bridgewood 16" Planer

Description: Model BW-16PV, phase 3, 3 h.p., 220 volts.



Woods Universal Cutter Head Grinder

Description: Used for accurately and uniformly grinding the knives of side-heads and profiler heads. Working condition unknown.



Bridgwood 16" Planer

Description: Model unknown. This has 2 side-cutting heads that each have a 5 hp, 220/440 volts, 3 phase motor.

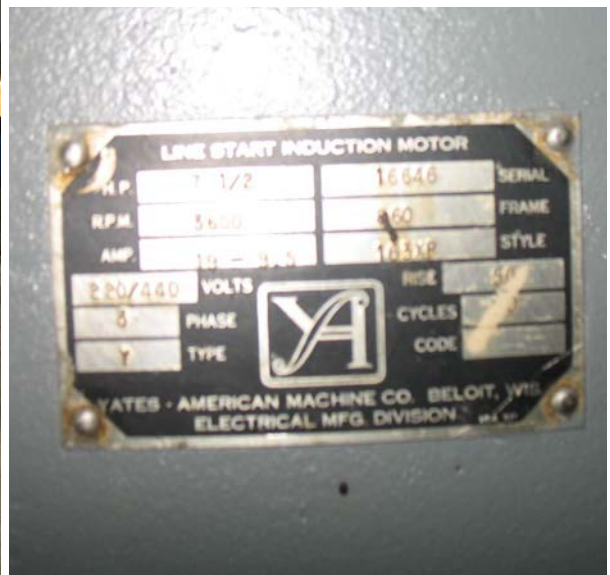




Yates American 24" Planer

Description: Model B244. This has a 7 ½ hp, 220/440 volt, 3 phase motor. Working condition is unknown.





Clamps

Description: These clamps have a 7" wide end plate and a 28" opening. The box on the pallet (see below picture) is full of them and there are more on other pallets.

