

Leggy!

ENTOMOLOGIST'S GUIDE

5.



Look for the walking sticks.
How many do you see? _____
Compare your observation with someone else.

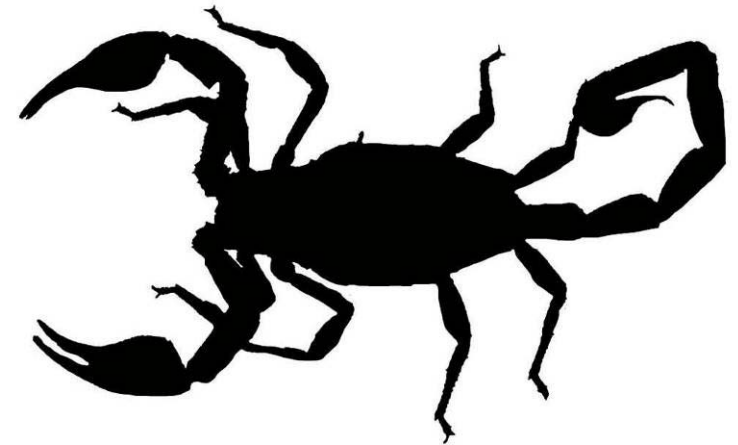
6.



What is the horseshoe crab most
closely related to?
a crab
a spider
a centipede

7. You saw a lot of Arthropods today!
Draw your favorite one.

Common Name: _____
Species : _____



You need: A pencil
A writing board
No fear

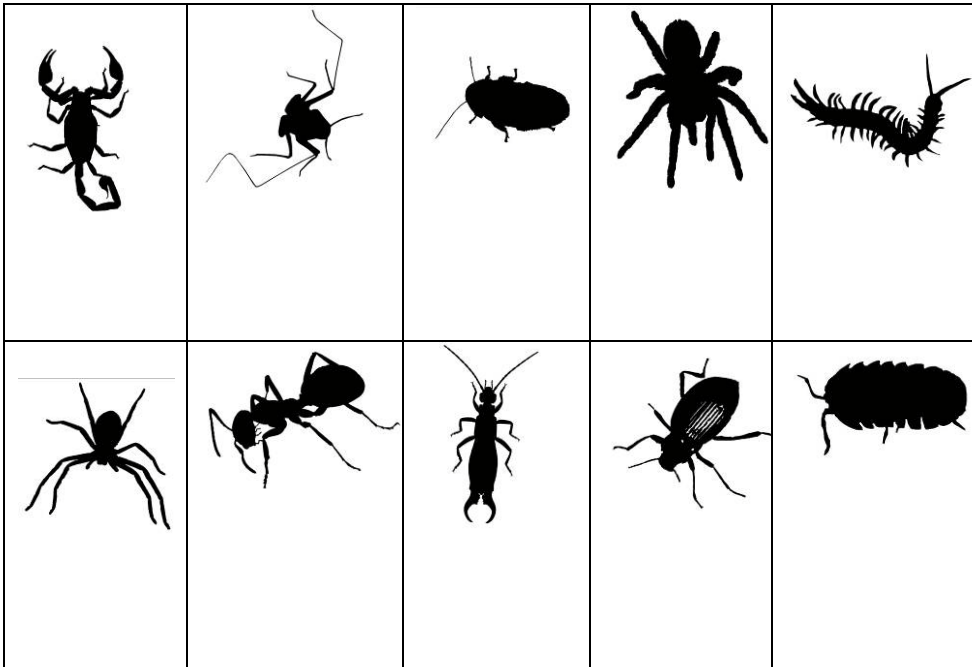
1. What are the 3 characteristics of an Arthropod?

- A. _____
- B. _____
- C. _____

2. What is an entomologist?

3. Who is this?

Circle the animals you see or write their name and the group they belong to (*Insecta*, *Arachnida*, *Crustacea* or *Myriapoda*) in the box.

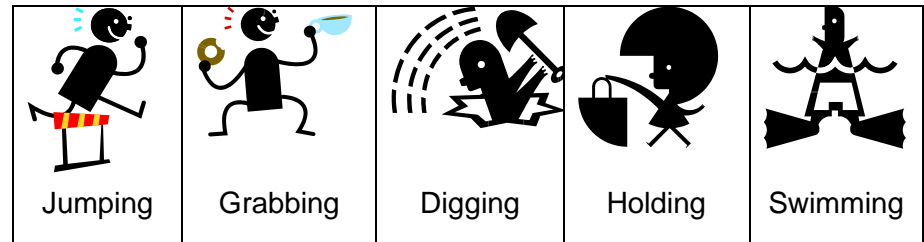
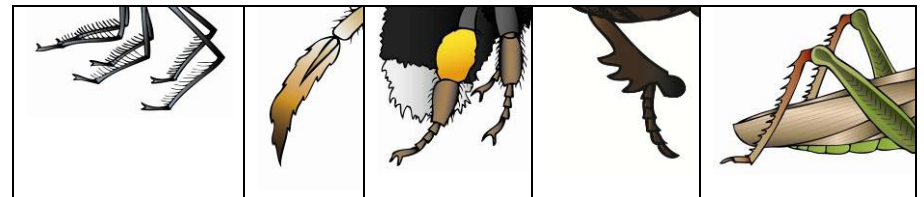


Did you see them all? Yes No

If not, why do you think you didn't?

4. Who has these legs and what do they use them for?

Look at the "Explore our Backyard" board and link the legs with the related action by drawing a line between the two.



Continue on the back!