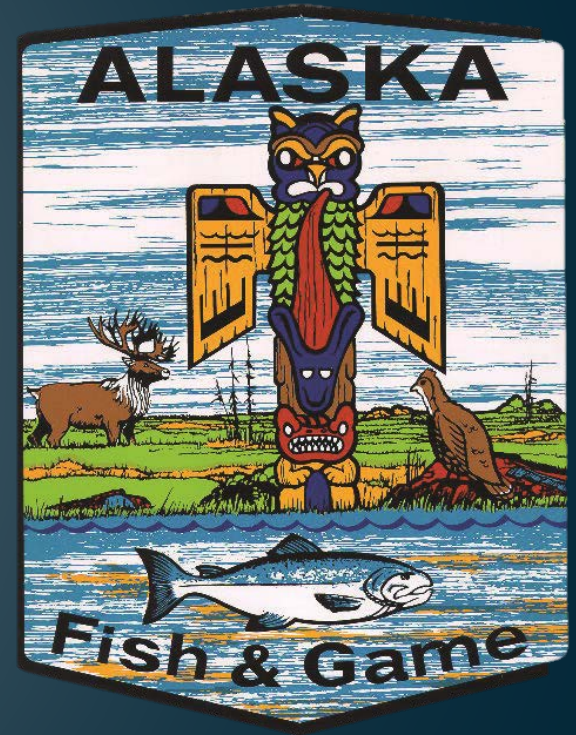


Alaska Department of Fish and Game Division of Commercial Fisheries

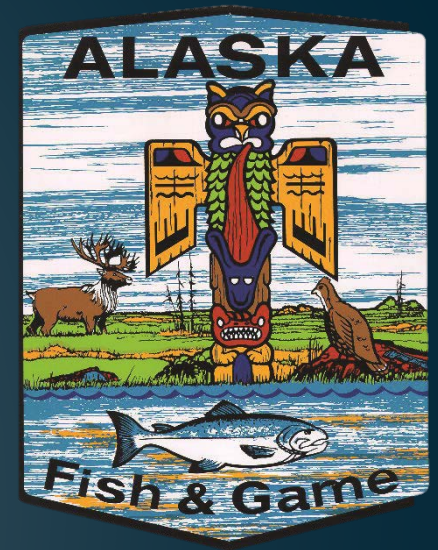
Overview of commercial salmon fisheries in the State of Alaska



Division of Commercial Fisheries

**Commercial Fisheries Worth
\$5 Billion Annually**

**Salmon Harvest Exvessel Value
\$600 Million (2010-15)**



Division of Commercial Fisheries

308 permanent staff

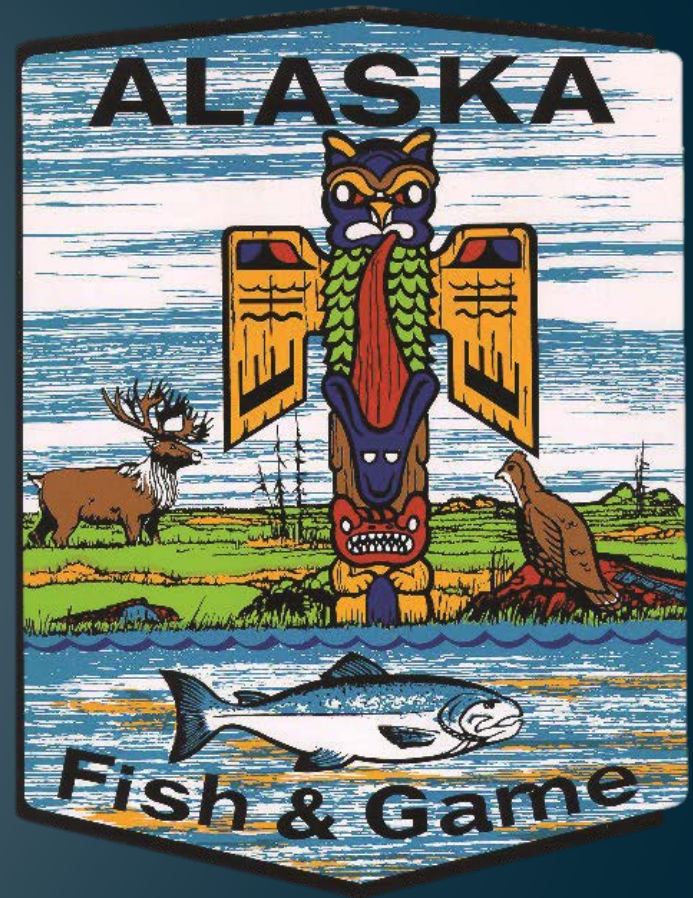
433 seasonal staff

20 permanent offices

84 seasonal offices/camps

6 research vessels

~\$39 Million



Division of Commercial Fisheries

Primary Responsibilities



- **Manage subsistence, commercial, and personal use fisheries**
- **Conduct applied research on Alaska's salmon resources**
- **Plan/Permit salmon hatchery operations**
- **Negotiate fishing agreements**
(Pacific Salmon Treaty and Alaska-Yukon Treaty)

Division of Commercial Fisheries

Core Services



- **Harvest Management (Regulations, Plans, Allocation)**
- **Stock Assessment (Biological Sampling)**
- **Hatchery Permitting (Regulatory, Technical, and Planning Services)**
- **Customer service and public involvement**



Harvest Management Basics



- Support Board of Fisheries to establish regulations and management plans
- Opening and closing fishing areas and setting fishing times based on abundance
- Collecting harvest and biological data





Harvest Management Components

Inseason Management

- Local fisheries managers open and close fisheries setting time and area

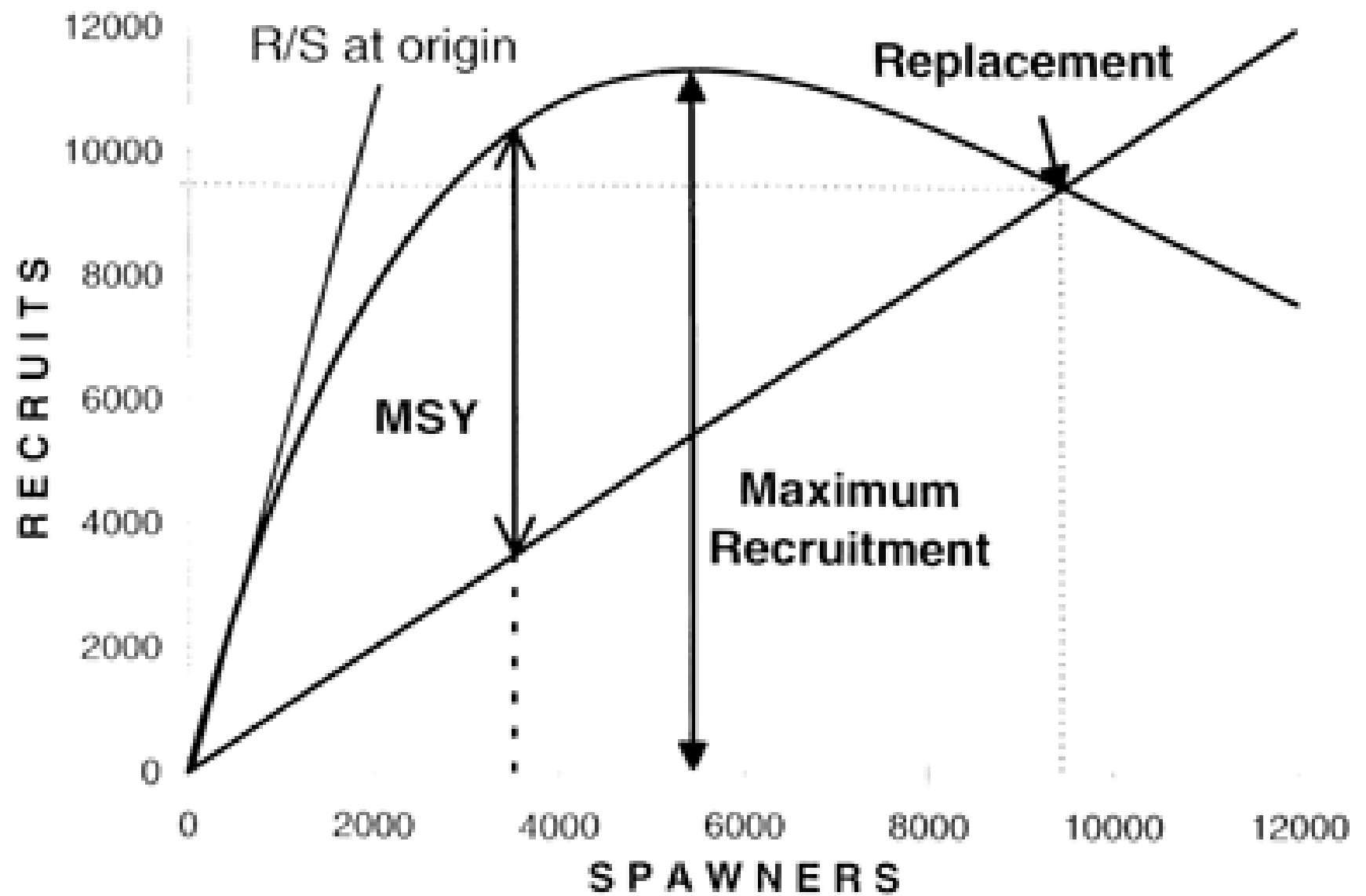
Stock Assessment

- To ensure that management of Alaska's fisheries is consistent with the sustained yield principle

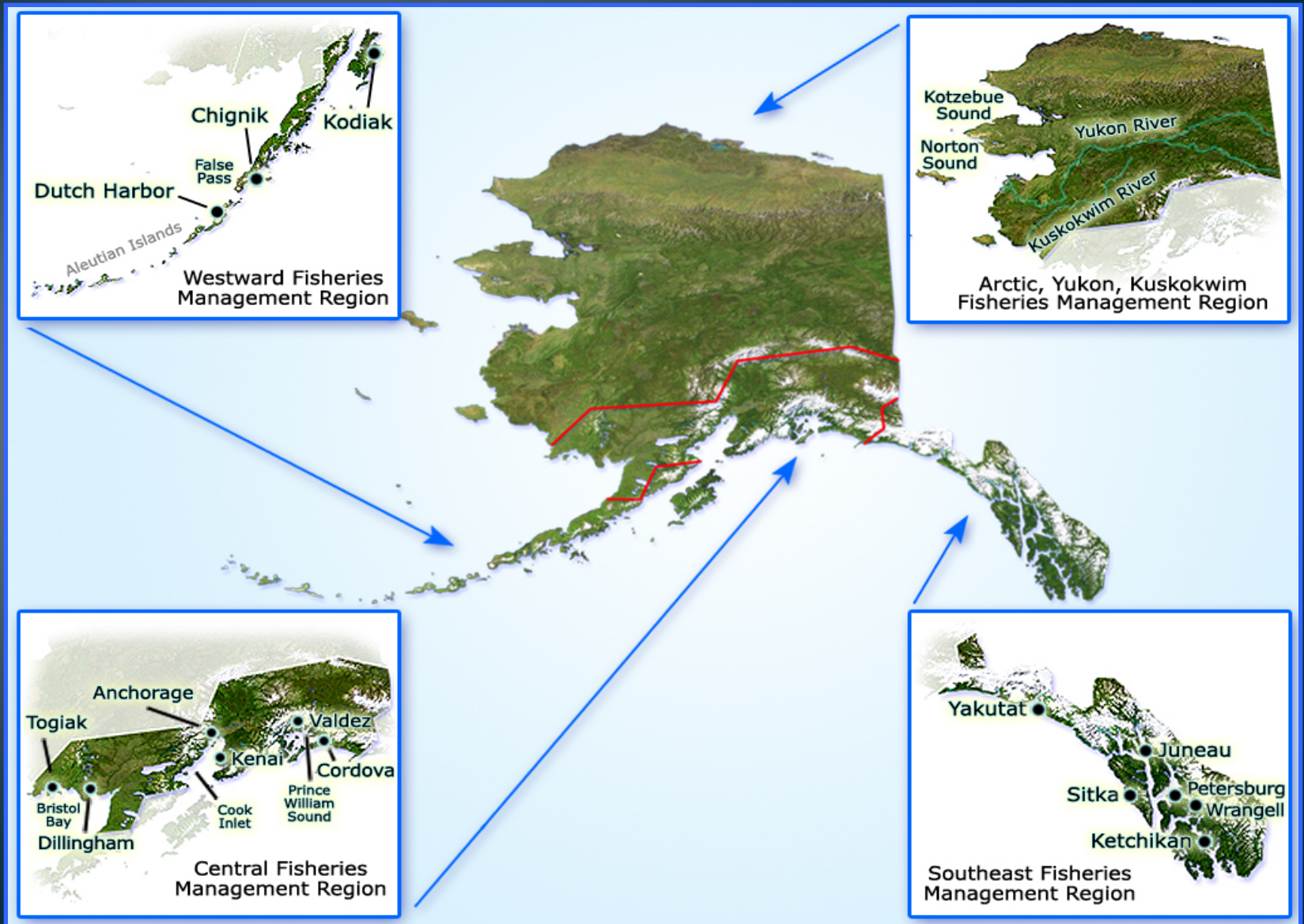
Stock Assessment and Management

- **Salmon Biology**
(Age, Size, Counts, Timing, etc.)
 - **Escapement Goals**
(Mathematical Models)
 - **Escapement Monitoring**
(Weirs, Towers, Sonar, Aerial Surveys)
- Inseason escapement goal based management**



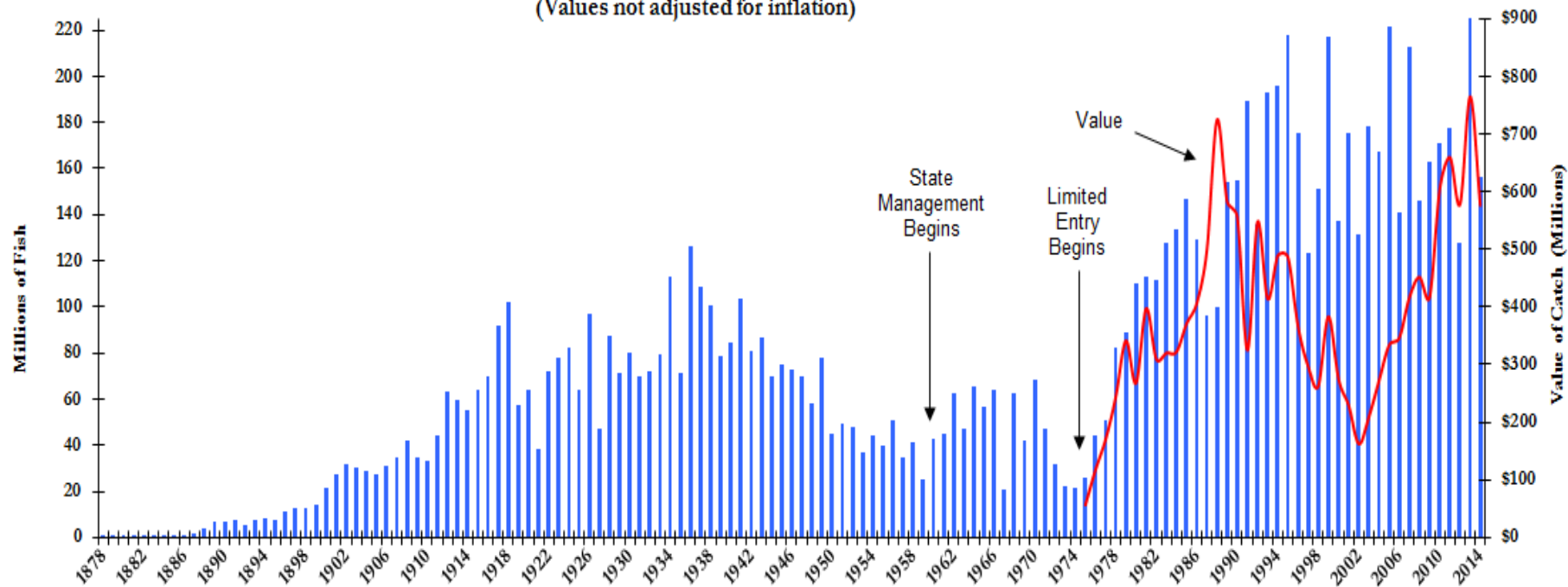


Fishery Management Regions



Alaska Commercial Salmon Catches & Value 1878-2014*

All Species combined
(Values not adjusted for inflation)



*2014 values preliminary

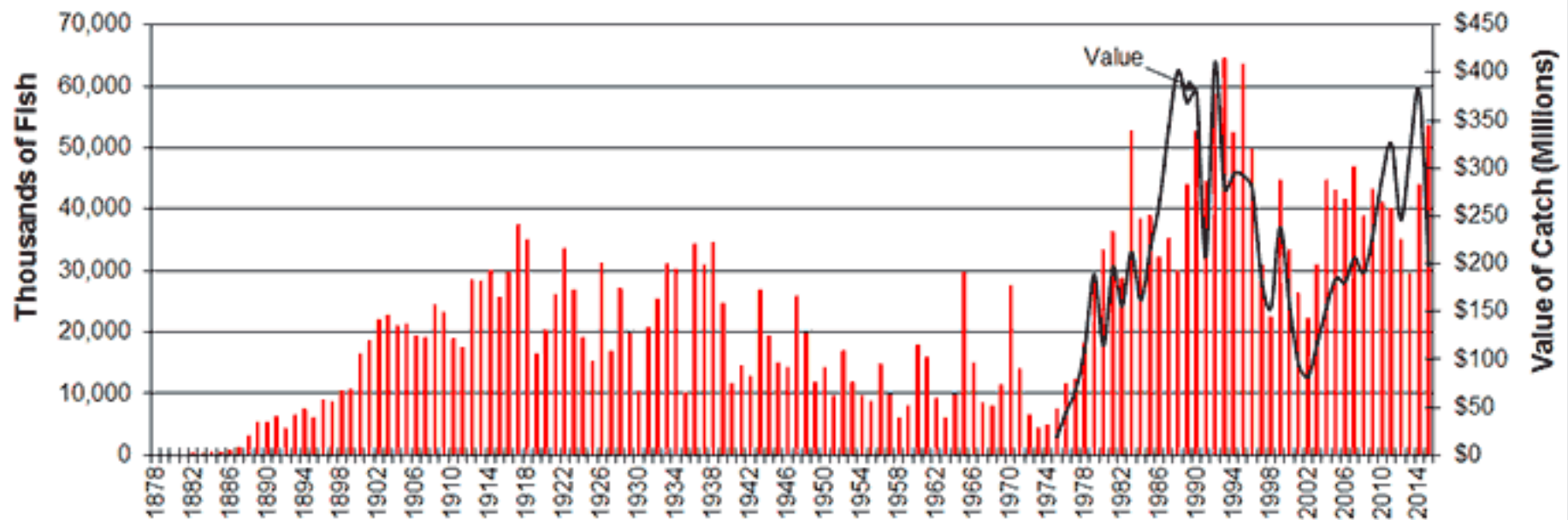
Challenges

- **Budget Cuts – challenge our ability to manage effectively**
- **Maintaining transparency and promoting public trust in stock assessment and fishery management decision making.**
- **Climate changes effects on run timing, fish size, and run strength – increased uncertainty and variability.**



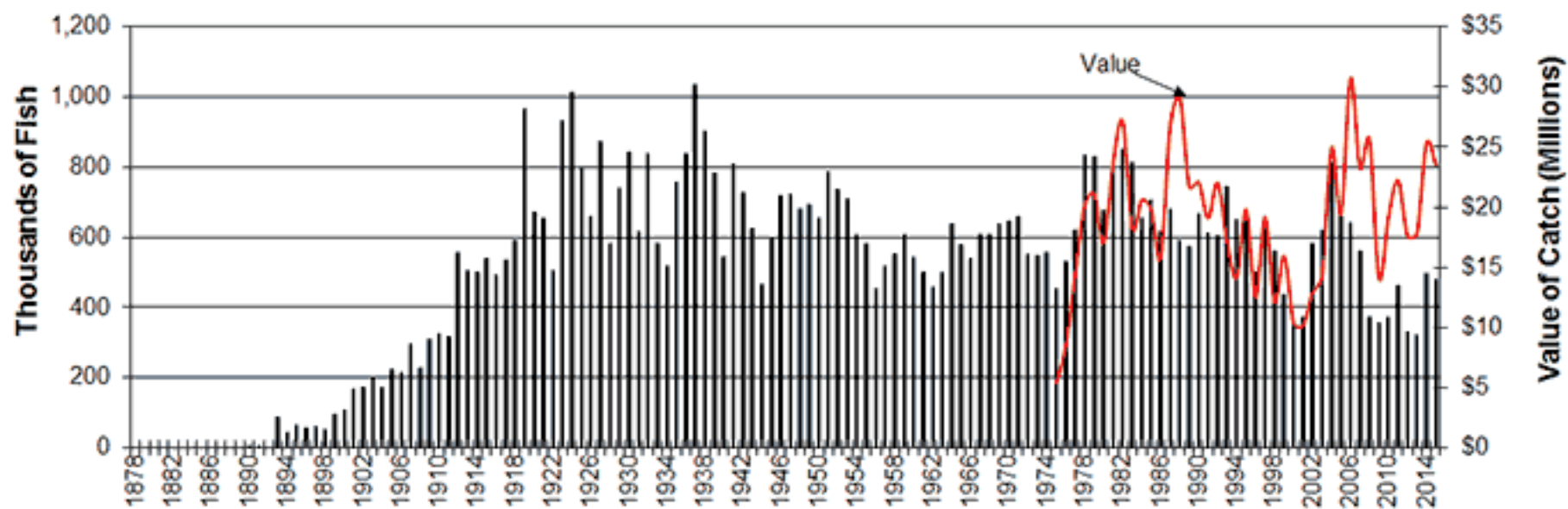
Alaska Commercial Sockeye Salmon Catches & Value 1878-2015

(Values not adjusted for inflation)



Alaska Commercial Chinook Salmon Catches & Value 1878-2015*

(Values not adjusted for inflation)



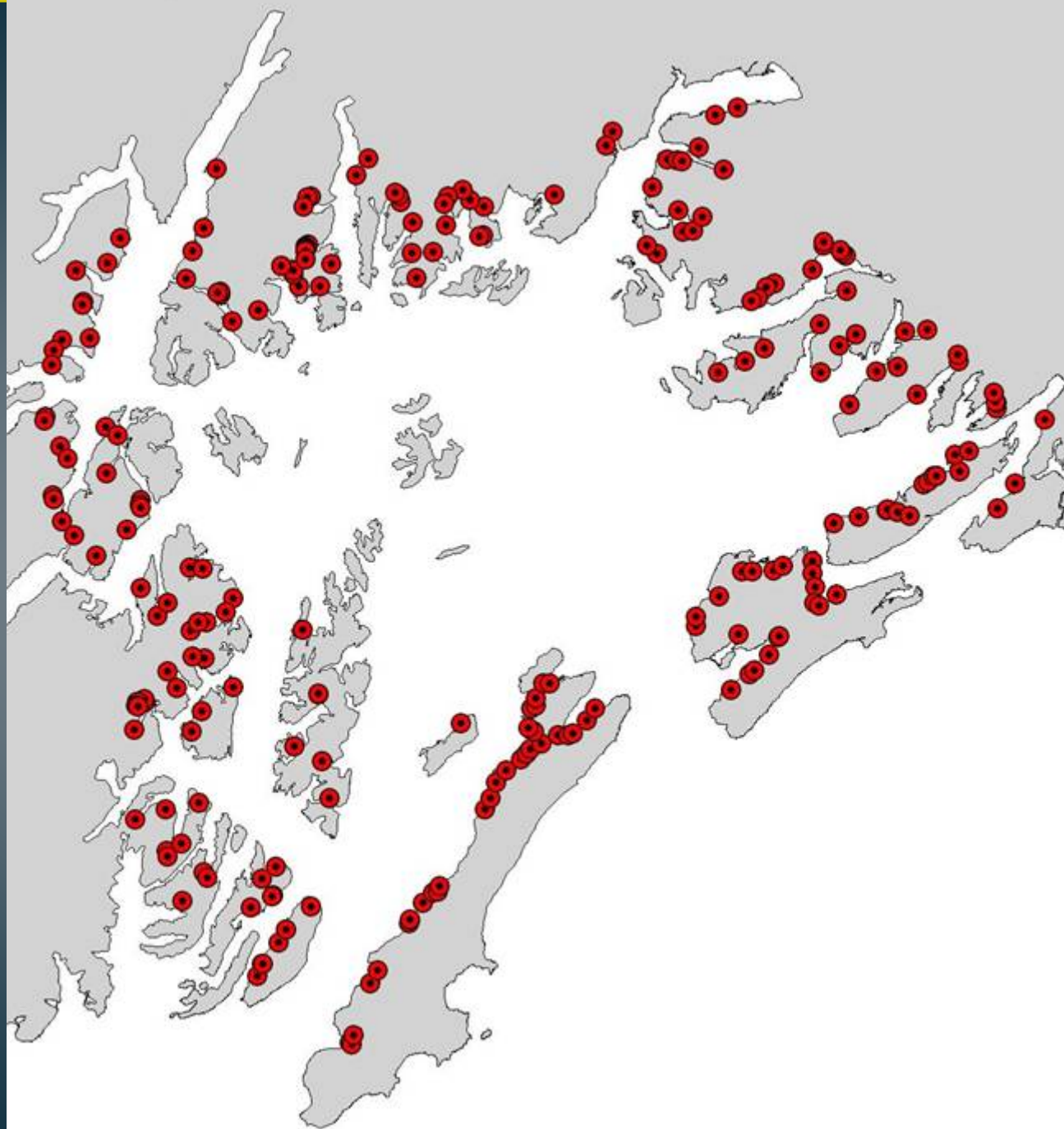
*2015 values are preliminary

Aerial Surveys









s
al)

| Location | Actual Daily | | | | Anticipated Daily | | | | % Difference | | |
|------------------|--------------|---------|---------|---------|-------------------|--------|---------|---------|--------------|-----|-----|
| | Bay | Mouth | Stream | Comb | Bay | Mouth | Stream | Comb | Bay | Mth | Str |
| Orca Inlet | 200 | 3,750 | 29,950 | 33,900 | 1,172 | 1,626 | 6,765 | 9,563 | -83 | 131 | 343 |
| Simpson Bay | 99,400 | 70,800 | 13,500 | 183,700 | 20,040 | 18,492 | 25,174 | 63,706 | 396 | 283 | -46 |
| Port Gravina | 14,750 | 135,400 | 81,100 | 231,250 | 29,265 | 20,979 | 26,573 | 76,817 | -50 | 545 | 205 |
| Port Fidalgo | 13,200 | 74,000 | 18,050 | 105,250 | 21,377 | 21,046 | 24,602 | 67,025 | -38 | 252 | -27 |
| Valdez Arm | 6,900 | 56,095 | 38,010 | 101,005 | 32,887 | 25,848 | 48,449 | 107,184 | -79 | 117 | -22 |
| Eastern District | 134,450 | 340,045 | 180,610 | 655,105 | 104,741 | 87,991 | 131,563 | 324,295 | 28 | 286 | 37 |

As actual counts exceed anticipated counts districts are opened to commercial fisheries

| Location | Actual Daily | | | | Anticipated Daily | | | | % Difference | | |
|------------------|--------------|---------|---------|---------|-------------------|--------|---------|---------|--------------|-----|-----|
| | Bay | Mouth | Stream | Comb | Bay | Mouth | Stream | Comb | Bay | Mth | Str |
| Orca Inlet | 200 | 3,750 | 29,950 | 33,900 | 1,172 | 1,626 | 6,765 | 9,563 | -83 | 131 | 343 |
| Simpson Bay | 99,400 | 70,800 | 13,500 | 183,700 | 20,040 | 18,492 | 25,174 | 63,706 | 396 | 283 | -46 |
| Port Gravina | 14,750 | 135,400 | 81,100 | 231,250 | 29,265 | 20,979 | 26,573 | 76,817 | -50 | 545 | 205 |
| Port Fidalgo | 13,200 | 74,000 | 18,050 | 105,250 | 21,377 | 21,046 | 24,602 | 67,025 | -38 | 252 | -27 |
| Valdez Arm | 6,900 | 56,095 | 38,010 | 101,005 | 32,887 | 25,848 | 48,449 | 107,184 | -79 | 117 | -22 |
| Eastern District | 134,450 | 340,045 | 180,610 | 655,105 | 104,741 | 87,991 | 131,563 | 324,295 | 28 | 286 | 37 |

As actual counts exceed anticipated counts districts are opened to commercial fisheries

Areas with counts behind anticipated Levels remain closed to fishing